



30 October 2020

Edition 22

AUSTRALIAN NOTICES TO MARINERS

Notices 897 - 937

Published fortnightly by the Australian Hydrographic Office



Australian Notices to Mariners are the authority for correcting charts and publications published by the Australian Hydrographic Office covering Australia, Papua New Guinea, Solomon Islands, Australian Antarctic Territory and Timor-Leste.

Commodore F.T. FREEMAN RAN
Hydrographer of Australia

SECTIONS.

- I. **Australian Notices to Mariners, including blocks and notes.**
- II. **Hydrographic Reports.**

SUPPLEMENTS.

- I. **Tracings**
- II. **Cumulative List of Australian Notices to Mariners.**
- III. **Cumulative List of Temporary and Preliminary Australian Notices to Mariners.**
- IV. **Temporary and Preliminary Notices in force.**

© Commonwealth of Australia 2020

This work is copyright. Apart from any use permitted under the Copyright Act 1968, no part may be reproduced by any process, adapted, communicated or commercially exploited without prior written permission from The Commonwealth represented by the Australian Hydrographic Office.

IMPORTANT NOTICE

This edition of Notices to Mariners includes all significant information affecting AHO products which the AHO has become aware of since the last edition. All reasonable efforts have been made to ensure the accuracy and completeness of the information, including third party information, on which these updates are based. The AHO regards third parties from which it receives information as reliable, however the AHO cannot verify all such information and errors may therefore exist. The AHO does not accept liability for errors in third party information.

GENERAL INSTRUCTIONS

The substance of these notices should be inserted on the charts affected.

Bearings are referred to the true compass and are reckoned clockwise from North; those relating to lights are given as seen by an observer from seaward.

Positions quoted in notices relate to WGS84 which is the horizontal datum for all charts produced by the Australian Hydrographic Office.

The range quoted for a light is its nominal range.

Depths are with reference to the chart datum of each chart. Heights are above mean high water springs or mean higher high water, as appropriate.

The capital letter (P) or (T) after the number of any notice denotes a preliminary or temporary notice respectively, which are contained separately at the end of the permanent notices.

REPORTING OF DANGERS

Mariners are particularly requested to notify the AUSTRALIAN HYDROGRAPHIC OFFICE, Locked Bag 8801 Wollongong, NSW 2500 (Fax 02-4223 6599, e-mail datacentre@hydro.gov.au or, alternatively by filling in and submitting the [Hydrographic Notes](#) forms located on the web site – www.hydro.gov.au), immediately on the discovery of new dangers or suspected dangers to navigation. For changes or defects in aids to navigation notify AusSAR (Fax 02-6230 6868 or email rccaus@amsa.gov.au).

AUTHORISED USE

Copies of Australian notices are available free of charge from the Australian Hydrographic Office (AHO) website (www.hydro.gov.au) and through the eNotices (email) service (www.hydro.gov.au/enotices/enotices.htm).

Individual Notices may be copied for the purpose of inserting Notice substance on official charts and publications. Paper copies may be printed by chart agents and distributed to customers on a cost recovery basis. Participating chart agents are listed on the AHO website as providing a 'Paper Notices to Mariners' service (www.hydro.gov.au/webapps/jsp/agents/agents-list.jsp). Copies of the notices may not be sold for profit without prior written agreement.

NUMERICAL INDEX OF NOTICES TO MARINERS

Edition No 22

Notices	Aus Chart, INT Chart, ENC Cell, AHP, BA Pubs
897	Aus 119, 502, 510, PNG 502, 510
898	Aus 53, 54, 280, 281, 392, 662
899	Amendment to Australian National Tide Tables 2021
900	Aus 242
901	Aus 367, 490, 4602, 4604, 4620, 4621, 4635, INT 602, 604, 620, 621, 635
902	Aus 814
903	PNG 519, 520
904	PNG 523
905	Aus 4621, INT 621, PNG 508, 509
906	Aus 299
907	Aus 299
908	Aus 309, 310
909	Aus 115
910	Aus 320, 323, 732
911	Aus 57, 327, 742
912	Aus 155
913	Aus 150
914	Aus 799
915(T)	Aus 489, 807, 4643, INT 643
916(T)	Aus 490, 816, 818, 4635, INT 635
917(T)	Aus 264
918(T)	Aus 245, 272
919(T)	Aus 814
920(P)	Aus 834, 836
921(T)	Aus 249, 823
922(T)	Aus 236
923(T)	Aus 236
924(T)	Aus 256, 827
925(T)	Aus 256, 827
926(T)	Aus 269
927(T)	Aus 24, 25, 26
928(T)	Aus 328, 4723, INT 723
929(T)	Aus 327, 4722, 4723, INT 722, 723
930(T)	Aus 320, 323, 732
931(T)	Aus 320, 323, 730, 732
932(T)	Aus 326
933(T)	Aus 754
934(T)	Aus 777
935(T)	Aus 485, 778
936(T)	Aus 137
937(T)	Aus 169

NUMERICAL INDEX OF CHARTS AFFECTED

Edition No 22

Aus Chart	Notices
Aus 24	927(T)
Aus 25	927(T)
Aus 26	927(T)
Aus 53	898
Aus 54	898
Aus 57	911
Aus 115	909
Aus 119	897
Aus 137	936(T)
Aus 150	913
Aus 155	912
Aus 169	937(T)
Aus 236	922(T), 923(T)
Aus 242	900
Aus 245	918(T)
Aus 249	921(T)
Aus 256	924(T), 925(T)
Aus 264	917(T)
Aus 269	926(T)
Aus 272	918(T)
Aus 280	898
Aus 281	898
Aus 299	906, 907
Aus 309	908
Aus 310	908
Aus 320	910, 930(T), 931(T)
Aus 323	910, 930(T), 931(T)
Aus 326	932(T)
Aus 327	911, 929(T)
Aus 328	928(T)
Aus 367	901
Aus 392	898
Aus 485	935(T)
Aus 489	915(T)
Aus 490	901, 916(T)
Aus 502	897
Aus 510	897
Aus 662	898
Aus 730	931(T)
Aus 732	910, 930(T), 931(T)
Aus 742	911
Aus 754	933(T)
Aus 777	934(T)
Aus 778	935(T)
Aus 799	914
Aus 807	915(T)
Aus 814	902, 919(T)
Aus 816	916(T)
Aus 818	916(T)
Aus 823	921(T)
Aus 827	924(T), 925(T)
Aus 834	920(P)
Aus 836	920(P)
Aus 4602	901

Aus Chart	Notices
Aus 4604	901
Aus 4620	901
Aus 4621	901, 905
Aus 4635	901, 916(T)
Aus 4643	915(T)
Aus 4722	929(T)
Aus 4723	928(T), 929(T)
PNG 502	897
PNG 508	905
PNG 509	905
PNG 510	897
PNG 519	903
PNG 520	903
PNG 523	904

INT Chart	Notices
INT 602	901
INT 604	901
INT 620	901
INT 621	901, 905
INT 635	901, 916(T)
INT 643	915(T)
INT 722	929(T)
INT 723	928(T), 929(T)

897 AUSTRALIA - Products - New Charts, New Editions, Withdrawn Charts

Australian Hydrographic Office

New Charts

<i>Chart</i>	<i>Title</i>	<i>Scale</i>	<i>Publication Date</i>	<i>Remarks</i>
PNG 502	Papua New Guinea - South Coast - Cape Blackwood to Kerema Bay 7° 28'·0 S – 8° 21'·2 S 144° 28'·0 E – 145° 52'·4 E Plan: Kerema Bay 7° 56'·5 S – 7° 59'·5 S 145° 41'·5 E – 145° 49'·0 E	1:150 000	30 October 2020	Adoption of Papua New Guinea chart numbering. Replaces Aus 502. General updating throughout.
PNG 510	Papua New Guinea - North East Coast - Long Reef to Sudest Island 10° 54'·30 S – 11° 47'·0 S 151° 49'·50 E – 153° 20'·85 E	1:150 000	30 October 2020	Adoption of Papua New Guinea chart numbering. Replaces Aus 510. General updating throughout.

New Editions and Withdrawn Charts

<i>Chart</i>	<i>Title</i>	<i>Scale</i>	<i>Publication Date</i>	<i>Remarks</i>
Aus 119 (Edition 3)	Australia - South Coast - Western Australia - Approaches to Esperance Plans: Approaches to Goose Island Bay Duke of Orleans Bay Esperance Bandy Creek Boat Harbour	1:75 000 1:50 000 1:50 000 1:10 000 1:7 500	30 October 2020	New edition with general updating throughout; including latest bathymetric data. Chart Aus 119 Edition 2 dated 16 April 2004 is now superseded and must be withdrawn from use.

New Electronic Navigation Chart (Aus ENC)

<i>Cell Name</i>	<i>Title</i>	<i>Publication Date</i>	<i>Remarks</i>
AU5PAT01	Australia - Victoria - Port Phillip - Patterson River	22 October 2020	AU5143P1 has been withdrawn.
AU5PHU01	Australia - Tasmania - Port Huon	22 October 2020	AU5174P4 has been withdrawn.
AU5REB01	Australia - Tasmania - Recherche Bay	22 October 2020	AU5174P5 has been withdrawn.
AU5SRN01	Australia – Tasmania - Strahan	22 October 2020	AU5177P1 has been withdrawn.
AU5DPO01	Australia – Tasmania - Devonport	22 October 2020	AU5164P1 has been withdrawn.
AU5BWT01	Australia – Tasmania - Burnie	29 October 2020	AU5163P1 has been withdrawn.
AU5FIW01	Australia – Tasmania - Flinders Island - Whitemark	29 October 2020	AU5179P1 has been withdrawn.
AU5HBA01	Australia – Tasmania - Hobart	29 October 2020	AU5172P0 has been withdrawn.
AU5LAB01	Australia – Tasmania - Flinders Island - Lady Barron and approaches	29 October 2020	AU5179P4 has been withdrawn.
AU5GRA01	Australia – Tasmania - King Island - Grassy Harbour	29 October 2020	AU5178P4 has been withdrawn.
AU5BEL01	Australia – Tasmania - Bell Bay and River Tamar	29 October 2020	AU5167X8 has been withdrawn.

897 AUSTRALIA - Products - New Charts, New Editions, Withdrawn Charts
New Electronic Navigation Chart (Aus ENC) (continued)

<i>Cell Name</i>	<i>Title</i>	<i>Publication Date</i>	<i>Remarks</i>
AU5NWB01	Australia – Tasmania - North West Bay	29 October 2020	AU5174P1 has been withdrawn.
AU5KIC01	Australia – Tasmania - King Island - Currie	29 October 2020	AU5178P7 has been withdrawn.
AU5RHY01	Australia – Victoria - Western Port - Rhyll	29 October 2020	AU5150P3 has been withdrawn.
AU5PCA01	Australia - Victoria - Port Campbell	29 October 2020	AU5141P3 has been withdrawn.
AU5FRY01	Australia - Victoria - Port Fairy	29 October 2020	AU5141P2 has been withdrawn.
AU5WMB01	Australia - Victoria - Warnambool	29 October 2020	AU5141P1 has been withdrawn.
PG5648P0	Papua New Guinea - South Coast - Caution Bay	22 October 2020	AU5648P0 has been withdrawn.
PG5651P1	Papua New Guinea - North Coast - Wewak Wharves	29 October 2020	AU5651P1 has been withdrawn.
PG5672P0	Papua New Guinea - New Britain - North Coast - Tavanatangir Harbour	29 October 2020	AU5672P0 has been withdrawn.
PG5677P1	Bismarck Sea - Bialla Harbour	29 October 2020	AU5677P1 has been withdrawn.
PG5680P1	Papua New Guinea - New Britain - Simpson (Rabaul) and Matupit Harbours	29 October 2020	AU5680P1 has been withdrawn.

Charts withdrawn

<i>Chart</i>	<i>Remarks</i>
Aus 502	On publication of new chart PNG 502
Aus 510	On publication of new chart PNG 510

AusTides 2021

<i>AHP No</i>	<i>Title</i>	<i>Recommended retail price (incl GST)</i>	<i>Remarks</i>
AHP 114	AusTides 2021	\$20.00	AusTides 2021 for Australia, Antarctica, Papua New Guinea, Solomon Islands and Timor-Leste. Provides tidal data for 2020 and 2021.

Chart permanently withdrawn

Charts listed above as withdrawn no longer meet chart carriage requirements and should be marked as "superseded" and replaced with the new chart/ new edition listed prior to passage through the area covered by the new chart.

When placing orders with a chart agent between notice of forthcoming edition and its publication, mariners should advise whether their order pertains to the current edition or the new edition.

For further details refer to the AHO website at www.hydro.gov.au for new edition and new chart stock arrival information.

898 AUSTRALIA - Products - New Charts and New Editions to be published shortly

Australian Hydrographic Office

New Charts to be published shortly

<i>Chart</i>	<i>Title</i>	<i>Scale</i>	<i>Remarks</i>
PNG 392	Papua New Guinea - New Ireland - New Hanover - North Cape to Nauna Island including Mussau Island	1:300 000	Adoption of Papua New Guinea chart numbering. Replaces Aus 392. General updating throughout.
PNG 662	Papua New Guinea - Admiralty Islands - Seeadler Harbour Plans:	1:25 000	Adoption of Papua New Guinea chart numbering. Replaces Aus 662. General updating throughout.
	Lorengau Bay	1:10 000	
	Lombrum Bay	1:10 000	

New Editions to be published shortly

<i>Chart</i>	<i>Title</i>	<i>Scale</i>	<i>Remarks</i>
Aus 53	Australia - North West Coast - Western Australia - Approaches to Port Hedland	1:50 000	New edition with general updating throughout; including latest bathymetric data.
Aus 54	Australia - North West Coast - Western Australia - Port Hedland	1:7 500	New edition with general updating throughout; including latest bathymetric data.

Charts to be withdrawn

<i>Chart</i>	<i>Remarks</i>
Aus 392	On publication of new chart PNG 392
Aus 662	On publication of new chart PNG 662

Charts to be withdrawn without replacement 27 November 2020

<i>Chart</i>	<i>Title</i>	<i>Scale</i>	<i>Publication Date</i>
Aus 280	Australia - East Coast - Queensland - Plans in Queensland		22 February 2019
Edition 5	(Sheet 3) Plans: Magpie Reef to Eden Reef Flinders Group	1:75 000 1:50 000	
Aus 281	Australia - East Coast - Queensland - First Three Mile Opening to Cape Direction	1:75 000	22 February 2019
Edition 3			

899 AUSTRALIA - Product - Amendment to Australian National Tide Tables 2021
 Australian Hydrographic Office

ANTT 2020

Pages 62, 63, 64

Replace pages 62 – 64 Twin Island with AHP11 - 2021 - CH3 - Pages 62-63-64 - Twin Island

Page 327

Amend PORT MACQUARIE To Chart Datum 0.0 to -0.2

Page 329

Amend HOGAN ISLAND To Chart Datum -0.5 to 0.0

Page 352

Amend ALOTAU Correction to Chart Datum ENC AU5624P1 to PG5624P1
 ANEWA BAY Correction to Chart Datum ENC AU5683P1 to PG5683P1
 BARROW ISLAND – WAPET LANDING Correction to Chart Datum AUS 742 NE 18 SEP 2020 0.0

Page 353

Delete BROOME Correction to Chart Datum AUS 51 NE 31 MAY 2019 0.0

Page 354

Amend DREGERHAFEN Correction to Chart Datum ENC AU5653P0 to PG5653P0
 EDEN Correction to Chart Datum ENC AU5192P0 to AU5QDN01
Delete DREGERHAFEN To Chart Datum AUS 386 NC 28 MAR 2008 0.0
Insert DREGERHAFEN To Chart Datum PNG 386 NC 21 AUG 2020 0.0

Page 355

Amend GERALDTON Correction to Chart Datum ENC AU5081P1 to AU5GET01

Page 356

Amend LAE Correction to Chart Datum ENC AU5642P0 to PG5642P0
 LAKES ENTRANCE OUTER Correction to Chart Datum ENC AU5642P2 to AU5LEN01
Delete LAKES ENTRANCE OUTER Correction to Chart Datum AUS 182 NE 19 APR 2019 SUBTRACT 0.1
Insert LAKES ENTRANCE OUTER Correction to Chart Datum AUS 357 NC 19 NOV 2010 SUBTRACT 0.3

899 AUSTRALIA - Product - Amendment to Australian National Tide Tables 2021**ANTT 2020** *(continued)*

Page 357

<i>Amend</i>	MADANG Correction to Chart Datum ENC AU5646P0 to PG5646P0 NEWCASTLE Correction to Chart Datum ENC AU5208P0 to AU5NTL01
<i>Delete</i>	NEWCASTLE Correction to Chart Datum AUS 208 NE 08 MAY 2012 0.0
<i>Insert</i>	NEWCASTLE Correction to Chart Datum AUS 207 NE 31 MAY 2019 0.0

Page 358

<i>Amend</i>	PORT KEMBLA Correction to Chart Datum ENC AU5194P0 to AU5PKL01
<i>Delete</i>	PORT KEMBLA Correction to Chart Datum AUS 194 NE 10 AUG 2018 0.0

Page 359

<i>Amend</i>	PORT MORESBY Correction to Chart Datum ENC AU5621P0 to PG5621P0 PORT PIRIE Correction to Chart Datum ENC AU5136P1 to AU5PPI01 PORT WALCOTT Correction to Chart Datum ENC AU5056P0 to AU5PWL01 PORT WELSHPOOL Correction to Chart Datum ENC AU5182P4 to AU5WHL01 PORTLAND Correction to Chart Datum ENC AU5140P0 to AU5PTJ01
<i>Delete</i>	PORT MORESBY To Chart Datum AUS 379 NC 18 JAN 2008 0.0 PORT WALCOTT Correction to Chart Datum AUS 56 NE 09 AUG 2013 0.0 PORT WELSHPOOL Correction to Chart Datum AUS 182 NE 19 APR 2019 0.0
<i>Insert</i>	PORT MORESBY To Chart Datum PNG 379 NC 07 AUG 2020 0.0

Page 360

<i>Amend</i>	TOWNSVILLE Correction to Chart Datum ENC AU5257P0 to AU5TSV01
--------------	---

Page 361

<i>Amend</i>	VICTOR HARBOR Correction to Chart Datum ENC AU5127P1 to AU5VHR01 WALLAROO Correction to Chart Datum ENC AU5133P1 to AU5WAL01 WHYALLA Correction to Chart Datum ENC AU5135P1 to AU5WHY01
<i>Delete</i>	WEWAK To Chart Datum AUS 651 NC 18 JAN 2008 0.0
<i>Insert</i>	WEWAK To Chart Datum PNG 651 NC 21 AUG 2020 0.0

Page 362

<i>Amend</i>	YAMBA Correction to Chart Datum ENC AU5222P0 to AU5YBA01
<i>Delete</i>	YAMBA Correction to Chart Datum AUS 220 NC 10 APR 2009 0.0

900 AUSTRALIA - QUEENSLAND - Bundaberg - Sea Reach - Light buoy

Maritime Safety Queensland Notice 375(T)/2020

Aus 242 (Port Bundaberg) [1135/2019]Insert special conical light buoy, *Fl. Y. 2·5s*, with topmark

24° 45'.327 S 152° 24'.424 E

901 AUSTRALIA - QUEENSLAND - Great Barrier Reef - Elusive Reef to Molar Reef - Depths
LADS Flight HI594, HI613

Aus 367 [102/2019]

Insert	depth, 7 ₈ m, and extend contour N to enclose	21° 05'.78 S	152° 39'.48 E
	depth, 15m, enclosed by contour	21° 06'.46 S	152° 40'.38 E
	depth, 9 ₉ m, enclosed by contour	21° 08'.86 S	152° 40'.56 E
	depth, 17 ₃ m, enclosed by contour	21° 13'.98 S	152° 40'.35 E
	depth, 13 ₆ m, enclosed by contour	21° 16'.77 S	152° 38'.99 E
	depth, 6 ₇ m, enclosed by contour	21° 27'.51 S	152° 34'.71 E
	depth, 9 ₆ m	21° 30'.89 S	152° 34'.05 E
	depth, 13 ₇ m, enclosed by contour	21° 35'.34 S	152° 38'.99 E
	depth, 5 ₆ m, semi enclosed by contour to E	21° 35'.78 S	152° 32'.51 E
	depth, 13 ₇ m, enclosed by contour	21° 39'.14 S	152° 39'.72 E
	depth, 10 ₂ m, enclosed by contour	21° 42'.34 S	152° 37'.97 E
Replace	depth, 16 ₄ m, with depth, 7 ₄ m	21° 04'.7 S	152° 46'.0 E
	depth, 24 ₇ m, with depth, 13 ₈ m	21° 05'.6 S	152° 45'.3 E
	contour value 30 with contour value 10	21° 05'.7 S	152° 38'.7 E
	depth, 19 ₃ m, with depth, 10 ₈ m	21° 21'.8 S	152° 35'.4 E
Delete	depth, 26 ₅ m	21° 06'.1 S	152° 39'.2 E
	depth, 17 ₂ m	21° 27'.1 S	152° 34'.8 E
	depth, 11 ₈ m	21° 31'.2 S	152° 33'.9 E
	depth, 52m	21° 35'.4 S	152° 32'.7 E

Aus 490 [847/2020]

Insert	danger line, between	19° 59'.76 S	150° 34'.00 E
		20° 01'.82 S	150° 39'.20 E
		20° 02'.80 S	150° 40'.67 E
		20° 12'.14 S	150° 49'.83 E
		20° 16'.09 S	150° 52'.38 E
		20° 17'.83 S	150° 55'.14 E
	depth, 9 ₉ m, enclosed by contour	21° 08'.86 S	152° 40'.56 E
	depth, 17 ₃ m, enclosed by contour	21° 13'.98 S	152° 40'.35 E
	depth, 13 ₆ m, enclosed by contour	21° 16'.77 S	152° 38'.99 E
	depth, 13 ₇ m, enclosed by contour	21° 35'.34 S	152° 38'.99 E
	depth, 13 ₇ m, enclosed by contour	21° 39'.14 S	152° 39'.72 E
	depth, 10 ₂ m, enclosed by contour	21° 42'.34 S	152° 37'.97 E
Replace	depth, 19 ₃ m, with depth, 10 ₈ m	21° 21'.8 S	152° 35'.4 E
Delete	danger line, between	20° 17'.8 S	150° 55'.1 E
		20° 01'.0 S	150° 34'.0 E

Aus 4602 (INT 602) [696/2020]

Insert	contour, between	20° 17'.8 S	150° 55'.1 E
		20° 02'.8 S	150° 40'.7 E
		19° 59'.8 S	150° 34'.0 E
	depth, 13 ₇ m, enclosed by contour	21° 35'.3 S	152° 39'.0 E
Replace	depth, 24m, with depth, 13 ₆ m	21° 15'.0 S	152° 40'.0 E
Delete	contour, between	20° 17'.8 S	150° 55'.1 E
		20° 01'.6 S	150° 35'.5 E

Aus 4604 (INT 604) [696/2020]

Insert	contour, between	20° 17'.8 S	150° 55'.1 E
		20° 02'.8 S	150° 40'.7 E
		19° 59'.8 S	150° 34'.0 E
Delete	contour, between	20° 17'.8 S	150° 55'.1 E
		20° 01'.6 S	150° 35'.5 E

901 AUSTRALIA - QUEENSLAND - Great Barrier Reef - Elusive Reef to Molar Reef - Depths**Aus 4620 (INT 620) [800/2020]**

Insert	danger line, between	20° 17'.8 S	150° 55'.1 E
		20° 16'.1 S	150° 52'.4 E
		20° 12'.1 S	150° 49'.8 E
		20° 02'.8 S	150° 40'.7 E
		20° 01'.8 S	150° 39'.2 E
		19° 59'.8 S	150° 34'.0 E
		20° 01'.4 S	150° 32'.5 E
Delete	danger line, between	20° 17'.8 S	150° 55'.1 E
		20° 01'.4 S	150° 32'.5 E

Aus 4621 (INT 621) [800/2020]

Insert	danger line, between	20° 17'.8 S	150° 55'.1 E
		20° 16'.1 S	150° 52'.4 E
		20° 12'.1 S	150° 49'.8 E
		20° 02'.8 S	150° 40'.7 E
		20° 01'.8 S	150° 39'.2 E
		19° 59'.8 S	150° 34'.0 E
		20° 01'.4 S	150° 32'.5 E
	depth, 9 ₉ m, enclosed by contour	21° 08'.9 S	152° 40'.6 E
	depth, 13 ₇ m, enclosed by contour	21° 39'.1 S	152° 39'.7 E
	depth, 10 ₂ m, enclosed by contour	21° 42'.3 S	152° 38'.0 E
Replace	depth, 24m, with depth, 13 ₆ m	21° 15'.0 S	152° 40'.0 E
	depth, 19 ₃ m, with depth, 10 ₈ m	21° 21'.8 S	152° 35'.4 E
	depth, 66m, with depth, 13 ₇ m, enclosed by contour	21° 36'.0 S	152° 39'.0 E
Delete	danger line, between	20° 17'.8 S	150° 55'.1 E
		20° 01'.4 S	150° 32'.5 E

Aus 4635 (INT 635) [227/2020]

Insert	danger line, between	20° 17'.8 S	150° 55'.1 E
		20° 16'.1 S	150° 52'.4 E
		20° 12'.1 S	150° 49'.8 E
		20° 02'.8 S	150° 40'.7 E
		20° 01'.8 S	150° 39'.2 E
		20° 00'.0 S	150° 34'.6 E
		20° 00'.0 S	150° 33'.5 E
	danger line, between	20° 01'.4 S	150° 32'.5 E
	depth, 9 ₉ m, enclosed by contour	21° 08'.9 S	152° 40'.6 E
	depth, 13 ₇ m, enclosed by contour	21° 39'.1 S	152° 39'.7 E
	depth, 10 ₂ m, enclosed by contour	21° 42'.3 S	152° 38'.0 E
Replace	depth, 24m, with depth, 13 ₆ m	21° 15'.0 S	152° 40'.0 E
	depth, 19 ₃ m, with depth, 10 ₈ m	21° 21'.8 S	152° 35'.4 E
	depth, 66m, with depth, 13 ₇ m, enclosed by contour	21° 36'.0 S	152° 39'.0 E
Delete	danger line, between	20° 17'.8 S	150° 55'.1 E
		20° 01'.4 S	150° 32'.5 E

902 AUSTRALIA - QUEENSLAND - Point Lookout - Fish aggregating device northeastwards

Maritime Safety Queensland Notice 373(T)/2020

Aus 814 [529/2020]

Move	light buoy	27° 23'.4 S	153° 41'.2 E
	to	27° 23'.45 S	153° 40'.62 E

903 PAPUA NEW GUINEA - Cape Nelson - Hardy Point - Depth eastwards

European Space Agency

PNG 519 [NC 24/1/2020]Replace depth, 13₆m, with depth, 7₆m,

9° 09'.5 S

149° 22'.5 E

PNG 520 [853/2020]Replace depth, 13₆m, with depth, 7₆m,

9° 09'.5 S

149° 22'.5 E

904 PAPUA NEW GUINEA - Nassau Bay to Finschhafen - Tidal panel

UKHO

PNG 523 [NC 18/9/2020]

Insert accompanying block

6° 32'.7 S

147° 30'.0 E

905 PAPUA NEW GUINEA - Sudest Island to Woodlark Island - Chart name

Australian Hydrographic Office

Aus 4621 (INT 621) [901/2020]

Amend legend to PNG 513

10° 15'.0 S

152° 20'.0 E

legend to PNG 510

11° 46'.0 S

151° 55'.0 E

legend to PNG 514

9° 39'.0 S

153° 38'.0 E

PNG 508 [192/2020]Amend legend to *Adjoining Chart* PNG 513 in E border

10° 12'.5 S

151° 07'.8 E

PNG 509 [234/2020]Amend legend to *Adjoining Chart* PNG 513 in N border

10° 06'.8 S

151° 27'.5 E

legend to *Adjoining Chart* PNG 510 in E border

11° 12'.5 S

151° 55'.8 E

906 AUSTRALIA - TORRES STRAIT - Ellis Channel - Hovell Bar - Light buoys

Maritime Safety Queensland

Aus 299 [699/2020]

Insert accompanying block

10° 34'.1 S

142° 15'.4 E

907 AUSTRALIA - TORRES STRAIT - Hammond Island - Bruce Point - Breakwater; nav aids*Former Notice* - 928(T)/2017 is cancelled

Maritime Safety Queensland

Note: A block correction for Aus 293 will be published in due course.**Aus 299** [906/2020]

Insert continuous line, between

10° 33'.562 S

142° 13'.241 E

10° 33'.557 S

142° 13'.253 E

light, *Fl.G.3s*

10° 33'.566 S

142° 13'.274 E

10° 33'.566 S

142° 13'.274 E

Delete light buoy

10° 33'.59 S

142° 13'.28 E

908 AUSTRALIA - NORTHERN TERRITORY - Parry Shoal - DepthsGeoscience Australia GA 0325, HMAS *Mermaid* and HMAS *Paluma* HI 615**Aus 309** [599/2020]

Insert accompanying block

11° 23'.0 S

129° 44'.0 E

Aus 310 [145/2020]

Insert accompanying block

11° 07'.0 S

129° 43'.5 E

909 AUSTRALIA - WESTERN AUSTRALIA - Bunbury - Depths

Southern Ports Authority

Aus 115 [801/2020]

Insert	contour, between	33° 18'.15 S	115° 39'.26 E
		33° 18'.18 S	115° 39'.22 E
		33° 18'.38 S	115° 39'.19 E

Delete	contour, between	33° 18'.1 S	115° 39'.3 E
		33° 18'.0 S	115° 39'.2 E
	depth, 8 ₂ m	33° 18'.1 S	115° 39'.2 E

Aus 115 (Bunbury) [801/2020]

Insert	accompanying block	33° 18'.2 S	115° 39'.0 E
--------	--------------------	-------------	--------------

910 AUSTRALIA - WESTERN AUSTRALIA - Mavis Reef - Rock

Exodus Hydrographic Surveys

Aus 320 [856/2020]

Insert	depth, 1m, enclosed by danger circle with legend, R	15° 32'.89 S	123° 37'.61 E
--------	---	--------------	---------------

Delete	depth, 1m	15° 32'.6 S	123° 37'.5 E
--------	-----------	-------------	--------------

Aus 323 [NE 24/8/2018]

Insert	depth, 1m, enclosed by danger circle with legend, R	15° 32'.89 S	123° 37'.61 E
--------	---	--------------	---------------

Delete	depth, 1m	15° 32'.6 S	123° 37'.5 E
--------	-----------	-------------	--------------

Aus 732 [1249/2019]

Insert	depth, 1m, enclosed by danger circle with legend, R	15° 32'.89 S	123° 37'.61 E
--------	---	--------------	---------------

Delete	depth, 10 ₅ m	15° 33'.0 S	123° 37'.9 E
--------	--------------------------	-------------	--------------

911 AUSTRALIA - WESTERN AUSTRALIA - Roly Rock - Light buoy withdrawn northwards

Department of Transport WA

Aus 57 [940/2019]

Delete	light buoy	20° 26'.8 S	116° 30'.9 E
--------	------------	-------------	--------------

Aus 327 [858/2020]

Delete	light buoy	20° 26'.8 S	116° 30'.9 E
--------	------------	-------------	--------------

Aus 742 [858/2020]

Delete	light buoy	20° 26'.8 S	116° 30'.9 E
--------	------------	-------------	--------------

912 AUSTRALIA - VICTORIA - Port Phillip - Altona - Light buoy

Parks Victoria Notice 293/2020

Aus 155 [702/2020]

Insert	south cardinal cylindrical light buoy, VQ(6)+LFl. 10s, with topmark	37° 52'.406 S	144° 50'.702 E
--------	---	---------------	----------------

913 AUSTRALIA - VICTORIA - Western Port - Rhyll - Light beacons

Parks Victoria Notice 345/2017

Aus 150 [547/2020]

Replace	beacon with starboard lateral light beacon, Fl.G.2s, with topmark	38° 27'.6 S	145° 18'.8 E
---------	---	-------------	--------------

Aus 150 (Rhyll) [547/2020]

Replace	beacon with port lateral light beacon, Fl.R.2s No4, with topmark	38° 27'.96 S	145° 18'.72 E
---------	--	--------------	---------------

914 AUSTRALIA - TASMANIA - Port Sorell - Light beacon

Marine and Safety Tasmania Notice M179/2020

Aus 799 [281/2020]Insert port lateral light beacon, *Fl.R.* 5s, with topmark

41° 08'.21 S

146° 33'.59 E

915(T)/2020 AUSTRALIA - NEW SOUTH WALES - Jervis Bay - Live firing completed

Former Notice - 863(T)/2020 is cancelled
Department of Defence 816 Squadron

Cancel this notice on receipt.

Chart formerly affected - Aus 489 - Aus 807 - Aus 4643 (INT 643)

916(T)/2020 AUSTRALIA - QUEENSLAND - Breaksea Spit - Light buoy damaged and unlit; virtual AIS

Australian Maritime Safety Authority Auscoast Warning 295/2020

The north cardinal light buoy, Q (24° 21'.22 S 153° 08'.97 E), is damaged and unlit and is in danger of coming adrift. A north cardinal virtual AIS exists in situ.

An exclusion zone marked by special virtual AIS exists in an area bounded by the following positions:

24° 21'.20 S 153° 08'.49 E
24° 21'.57 S 153° 08'.96 E
24° 21'.18 S 153° 09'.48 E
24° 20'.80 S 153° 09'.04 E.

Mariners are advised to keep well clear and to navigate with caution in the area.

Chart temporarily affected - Aus 490 - Aus 816 - Aus 818 - Aus 4635 (INT 635)

917(T)/2020 AUSTRALIA - QUEENSLAND - Cairns - Trinity Inlet - Wreck

Maritime Safety Queensland Notice 388(T)/2020

A stranded wreck marked by a light, F, exists in position 16° 57'.79 S 145° 47'.60 E.

Chart temporarily affected - Aus 264

918(T)/2020 AUSTRALIA - QUEENSLAND - Gladstone - Scientific instruments

Maritime Safety Queensland Notice 390(T)/2020

Special cylindrical light buoys, F.I.Y.6s, exist in the following positions:

23° 45'.53 S 151° 09'.49 E
23° 45'.92 S 151° 10'.87 E
23° 44'.71 S 151° 09'.62 E.

Chart temporarily affected - Aus 245 - Aus 272

919(T)/2020 AUSTRALIA - QUEENSLAND - Gold Coast - Crab Island - Dredging operations completed; scientific instruments recovered

Former Notice - 552(T)/2020 is cancelled
Maritime Safety Queensland

Cancel this notice on receipt.

Chart formerly affected - Aus 814

920(P)/2020 AUSTRALIA - QUEENSLAND - Great Barrier Reef - Quoin Island Entrance - Shoal

James Cook University

A shoal, least depth 40m, exists in position 12° 23'.50 S 143° 51'.50 E.

Mariners are advised to navigate with caution in the area.

Chart which will be affected - Aus 834 - Aus 836

921(T)/2020 AUSTRALIA - QUEENSLAND - Hay Point - Light beacon relit

Former Notice - 866(T)/2020 is cancelled
Maritime Safety Queensland

Cancel this notice on receipt.

Chart formerly affected - Aus 249 - Aus 823

922(T)/2020 AUSTRALIA - QUEENSLAND - Moreton Bay - Rous Channel - Light buoys repositioned; light buoys established

Former Notice - 821(T)/2020 is cancelled
Maritime Safety Queensland Notice 326(T)/2020, 381(T)/2020

The following light buoys have been temporarily repositioned:

<i>Characteristic</i>	<i>Charted Position</i>	<i>New Position</i>
<i>Fl.G.2-5s No1</i>	27° 22'.79 S 153° 26'.01 E	27° 22'.88 S 153° 26'.05 E
<i>Q No2</i>	27° 23'.32 S 153° 26'.05 E	27° 22'.99 S 153° 26'.07 E
<i>Fl.G.6s No5</i>	27° 23'.09 S 153° 24'.94 E	27° 23'.31 S 153° 25'.08 E
<i>Fl.G.2-5s No11</i>	27° 23'.96 S 153° 23'.42 E	27° 23'.79 S 153° 23'.35 E
<i>Fl.G.6s No13</i>	27° 24'.48 S 153° 22'.03 E	27° 24'.34 S 153° 22'.36 E

The following light buoys have been temporarily established:

<i>Position</i>	<i>Remarks</i>
27° 23'.87 S 153° 24'.03 E	port lateral cylindrical light buoy, <i>Fl.R.2-5s No20</i>
27° 23'.75 S 153° 24'.18 E	starboard lateral conical light buoy, <i>Fl.G.2-5s No21</i>
27° 23'.62 S 153° 24'.71 E	starboard lateral conical light buoy, <i>Fl.G.2-5s No19</i>
27° 23'.60 S 153° 25'.00 E	port lateral cylindrical light buoy, <i>Fl.R.2-5s No18</i>

Mariners are advised to navigate with caution in the area.

Chart temporarily affected - Aus 236

923(T)/2020 AUSTRALIA - QUEENSLAND - Moreton Bay - Ship to ship transfer completed

Former Notice - 514(T)/2020 is cancelled
Maritime Safety Queensland Notice 232(T)/2020

Cancel this notice on receipt.

Chart formerly affected - Aus 236

924(T)/2020 AUSTRALIA - QUEENSLAND - Rattlesnake Island - Live firing

Maritime Safety Queensland Notice 372(T)/2020

Live firing activities will be conducted within a 5M radius of position 19° 02'.27 S 146° 36'.43 E during the period 9 November to 10 November 2020.

Mariners are advised to navigate with caution and keep well clear of the area.

Chart temporarily affected - Aus 256 - Aus 827

925(T)/2020 AUSTRALIA - QUEENSLAND - Rattlesnake Island - Live firing completed

Former Notice - 822(T)/2020 is cancelled
Maritime Safety Queensland Notice 321(T)/2020

Cancel this notice on receipt.

Chart formerly affected - Aus 256 - Aus 827

926(T)/2020 AUSTRALIA - QUEENSLAND - Shute Harbour - Wreck
Maritime Safety Queensland Notice 393(T)/2020

A wreck marked by a special light buoy, *Fl.Y.3s*, exists in position 20° 17'.88 S 148° 46'.86 E.

Chart temporarily affected - Aus 269

927(T)/2020 AUSTRALIA - NORTHERN TERRITORY - Darwin Naval Base - Harbour works; exclusion zone
Department of Infrastructure, Planning and Logistics NT Notice 63/2020

Harbour works associated with wharf redevelopment are in progress in an area bounded by the coast and the following:

<i>Position</i>	<i>Remarks</i>
12° 27'.49 S 130° 49'.05 E	
12° 27'.52 S 130° 48'.98 E	special light buoy, <i>Fl.Y</i>
12° 27'.56 S 130° 48'.95 E	special light buoy, <i>Fl.Y</i>
12° 27'.61 S 130° 48'.92 E	special light buoy, <i>Fl.Y</i>
12° 27'.68 S 130° 48'.96 E	special light buoy, <i>Fl.Y</i>
12° 27'.85 S 130° 49'.25 E	special light buoy, <i>Fl.Y</i>
12° 27'.80 S 130° 49'.27 E	special light buoy, <i>Fl.Y</i>
12° 27'.76 S 130° 49'.30 E	special light buoy, <i>Fl.Y</i>
12° 27'.73 S 130° 49'.32 E	

An exclusion zone exists in the area and only authorised vessels are permitted to enter.

Mariners are advised to keep well clear and to navigate with caution in the area.

Chart temporarily affected - Aus 24 - Aus 25 - Aus 26

928(T)/2020 AUSTRALIA - WESTERN AUSTRALIA - Barrow Island - Drill rig northwestwards moved
Former Notice - 777(T)/2020 is cancelled
Australian Maritime Safety Authority

Cancel this notice on receipt.

Chart formerly affected - Aus 328 - Aus 4723 (INT 723)

929(T)/2020 AUSTRALIA - WESTERN AUSTRALIA - Dampier Archipelago - Drill rig northwards
Australian Maritime Safety Authority

Drill rig *Development Driller 1* is moored in position 20° 00'.0 S 116° 45'.0 E.

Chart temporarily affected - Aus 327 - Aus 4722 (INT 722) - Aus 4723 (INT 723)

930(T)/2020 AUSTRALIA - WESTERN AUSTRALIA - Mavis Reef - Scientific instruments eastwards
MMA Offshore , Exodus Hydrographic Surveys

Scientific instruments marked by spherical orange buoys, exist in the following positions:

15° 18'.43 S 123° 56'.37 E
15° 30'.37 S 123° 51'.78 E
15° 34'.72 S 123° 28'.53 E
15° 35'.35 S 123° 28'.80 E
15° 40'.73 S 123° 49'.22 E.

Mariners are advised to navigate with caution in the area. 1M clearance requested.

Chart temporarily affected - Aus 320 - Aus 323 - Aus 732

931(T)/2020 AUSTRALIA - WESTERN AUSTRALIA - Mavis Reef - Scientific instruments eastwards
Former Notice - 838(T)/2020 is cancelled
MMA Offshore , Exodus Hydrographic Surveys

Cancel this notice on receipt.

Chart formerly affected - Aus 320 - Aus 323 - Aus 730 - Aus 732

932(T)/2020 AUSTRALIA - WESTERN AUSTRALIA - Port Hedland - Cooke Point - Scientific instruments
Pilbara Ports Authority Notice 13(T)/2020

Scientific instruments exist in the following positions:

20° 19'.08 S 118° 40'.46 E
20° 18'.88 S 118° 40'.41 E
20° 18'.63 S 118° 40'.26 E
20° 18'.06 S 118° 40'.08 E
20° 17'.63 S 118° 40'.01 E
20° 18'.89 S 118° 40'.23 E
20° 18'.88 S 118° 40'.57 E
20° 18'.04 S 118° 39'.78 E
20° 16'.56 S 118° 45'.46 E
20° 16'.92 S 118° 45'.22 E
20° 17'.18 S 118° 45'.50 E
20° 16'.57 S 118° 45'.05 E
20° 15'.75 S 118° 45'.65 E
20° 15'.76 S 118° 44'.79 E
20° 18'.88 S 118° 40'.62 E.

Mariners are advised to navigate with caution in the area.

Chart temporarily affected - Aus 326

933(T)/2020 AUSTRALIA - WESTERN AUSTRALIA - Rottnest Island - Scientific instrument
Curtin University

A lit scientific instrument, marked by a buoy, surfaces three times daily to transmit data in the vicinity of position 31° 58'.54 S 115° 23'.27 E.

Chart temporarily affected - Aus 754

934(T)/2020 AUSTRALIA - SOUTH AUSTRALIA - Lucky Bay - Dredging operations
Department for Infrastructure and Transport SA Notice 28/2020

Dredging operations are in progress in an area bounded by the following positions:

33° 42'.55 S 137° 02'.26 E
33° 42'.82 S 137° 02'.70 E
33° 42'.58 S 137° 02'.91 E
33° 42'.40 S 137° 02'.60 E.

A floating pipeline exists in the area.

The dredge will display appropriate lights and shapes.

Mariners are advised to navigate with caution in the area.

Chart temporarily affected - Aus 777

935(T)/2020 AUSTRALIA - SOUTH AUSTRALIA - Mundoora Bay - Light beacon unlit
Department for Infrastructure and Transport SA Notice 27(T)/2020

The light beacon, *Fl.5s 5M* (33° 33'.64 S 137° 52'.72 E), is unlit.

Chart temporarily affected - Aus 485 - Aus 778

936(T)/2020 AUSTRALIA - SOUTH AUSTRALIA - Port Adelaide - Dredging operations

Department for Infrastructure and Transport SA Notice 29(T)/2020

Dredging operations are in progress at the following berths:

<i>Berth</i>	<i>Position</i>
1	34° 46'.75 S 138° 28'.85 E
2	34° 46'.66 S 138° 28'.91 E
3	34° 46'.59 S 138° 28'.96 E
7	34° 46'.10 S 138° 29'.43 E
27	34° 49'.66 S 138° 30'.57 E
29 and northern approaches	34° 49'.39 S 138° 30'.72 E
No3 Dock Turning Basin	34° 49'.84 S 138° 30'.56 E

A dredge, barge and support vessel are on site.

The dredge will display appropriate lights and shapes.

Submerged pipelines exist between berth 1 and Pelican Point (34° 45'.78 S 138° 30'.21 E) and northern approaches (34° 48'.47 S 138° 30'.98 E) to No3 Dock Turning Basin.

Mariners are advised to navigate with caution in the area.

Chart temporarily affected - Aus 137

937(T)/2020 AUSTRALIA - TASMANIA - Georges Bay - The Barway - Light buoy off station

Maritime and Safety Tasmania Notice 174/2020

The wreck buoy (41° 16'.24 S 148° 20'.07 E) is off station.

Chart temporarily affected - Aus 169

II

HYDROGRAPHIC REPORTS

NIL

AUSTRALIA, QUEENSLAND - TWIN ISLAND

LAT 10° 28' S LONG 142° 26' E

TIME ZONE -1000

TIMES AND HEIGHTS OF HIGH AND LOW WATERS

YEAR 2021

JANUARY					FEBRUARY					MARCH					APRIL								
	Time	m		Time	m		Time	m		Time	m		Time	m		Time	m		Time	m			
1 FR	0042 0456 1306 2058	1.7 0.7 3.1 1.2	16 SA	0200 1422 2204	1.7 3.1 1.0	1 MO	0203 0605 1421 2204	1.9 0.9 3.0 1.2	16 TU	0158 0600 1301 2204	1.8 1.1 2.5	1 MO	0111 0704 1325 2028	2.5 0.8 3.3 0.9	16 TU	0110 0536 1230 1825	2.4 1.1 2.7 1.1	1 TH	0218 0909 1407 1825	2.8 1.5 2.2 1.2	16 FR	0057 0609 1039 1728	2.6 1.8 2.2 0.9
2 SA	0120 0521 1344 2203	1.6 0.7 3.0 1.2	17 SU	0239 0553 1451 2310	1.5 1.0 2.8 1.2	2 TU	0251 0624 1458 2336	1.8 1.2 2.7 1.3	17 WE	0600 1207 1850 2320	1.3 2.4 1.4 1.7	2 TU	0151 0615 1358 2104	2.4 1.4 3.0 1.1	17 WE	0118 0553 1200 1810	2.3 1.3 2.5 1.1	2 FR	0315 1825	2.6 1.3	17 SA	0033 0610 1016 1725	2.6 1.9 2.2 0.8
3 SU	0207 0546 1435 2343	1.5 0.9 2.8 1.2	18 MO	1508	2.5	3 WE	0357 0621 1538	1.6 1.5 2.3	18 TH	0522 1109 1826 2303	1.5 2.4 1.3 1.8	3 WE	0234 0630 1427 2145	2.3 1.4 2.5 1.4	18 TH	0104 0602 1123 1803	2.2 1.5 2.4 1.1	3 SA	0525 1525 2222	2.5 1.0 2.0	18 SU	0021 0558 0844 1713	2.5 2.1 2.2 0.9
4 MO	0312 0601 1534	1.3 1.1 2.7	19 TU	0202 1242	1.2 2.2	4 TH	0131 1015 1447 1851	1.2 2.2 1.8 1.9	19 FR	0338 1044 1749 2301	1.5 2.5 1.2 1.9	4 TH	0331 0638 1417 1915	2.1 1.8 2.0 1.5	19 FR	0031 0555 1048 1752	2.2 1.7 2.4 1.0	4 SU	0116 0847 1550 2226	1.8 2.8 0.6 2.2	19 MO	0843 1621 2328	2.4 0.9 2.3
5 TU	0123 1643	1.0 2.5	20 WE	0251 1106	1.1 2.4	5 FR	0228 1004 1608 2105	1.1 2.6 1.4 1.9	20 SA	0339 1023 1727 2302	1.4 2.7 1.0 1.9	5 FR	0919 1608 2218	2.4 1.4 1.9	20 SA	1008 1731 2337	2.4 0.9 2.2	5 MO	0243 0909 1616 2227	1.6 3.1 0.4 2.3	20 TU	0315 0842 1611 2304	2.0 2.6 0.8 2.2
6 WE	0209 1040 1356 1853	0.9 2.1 1.9 2.3	21 TH	0317 1056 1719 2139	1.0 2.5 1.6 1.8	6 SA	0310 1009 1644 2148	0.9 2.9 1.0 2.0	21 SU	0342 1021 1729 2305	1.4 2.9 0.9 1.9	6 SA	0208 0934 1620 2227	1.5 2.8 0.9 2.0	21 SU	0347 0941 1659 2319	1.9 2.6 0.8 2.1	6 TU	0327 0932 1641 2230	1.4 3.2 0.3 2.4	21 WE	0306 0846 1617 2237	1.8 2.8 0.7 2.1
7 TH	0247 1008 1509 2014	0.7 2.4 1.6 2.3	22 FR	0333 1044 1727 2207	1.0 2.7 1.3 1.8	7 SU	0347 1027 1717 2223	0.8 3.2 0.7 2.1	22 MO	0345 1028 1741 2258	1.3 3.0 0.8 1.9	7 SU	0303 0950 1642 2230	1.3 3.1 0.6 2.1	22 MO	0340 0941 1654 2310	1.7 2.8 2.1 2.1	7 WE	0402 0957 1706 2242	1.1 3.3 0.3 2.5	22 TH	0321 0907 1630 2213	1.6 3.0 0.7 2.3
8 FR	0321 1007 1606 2109	0.6 2.7 1.3 2.2	23 SA	0341 1044 1745 2225	1.0 2.8 1.2 1.8	8 MO	0421 1051 1751 2256	0.7 3.4 0.5 2.1	23 TU	0356 1037 1753 2251	1.1 3.1 0.8 1.9	8 MO	0343 1008 1707 2238	1.1 3.3 0.4 2.2	23 TU	0338 0945 1702 2255	1.6 2.9 0.7 2.1	8 TH	0433 1023 1730 2301	1.0 3.3 0.4 2.6	23 FR	0352 0935 1651 2227	1.3 3.2 0.6 2.5
9 SA	0354 1028 1658 2157	0.5 3.0 1.1 2.2	24 SU	0348 1053 1805 2236	0.9 3.0 1.1 1.8	9 TU	0454 1120 1825 2328	0.6 3.6 0.4 2.2	24 WE	0418 1051 1805 2302	1.0 3.3 0.8 2.1	9 TU	0416 1031 1734 2256	0.9 3.4 0.3 2.3	24 WE	0347 0954 1713 2237	1.4 3.1 0.7 2.1	9 FR	0502 1049 1752 2323	0.9 3.3 0.6 2.6	24 SA	0429 1009 1717 2254	1.1 3.3 0.6 2.7
10 SU	0427 1056 1746 2242	0.5 3.3 0.8 2.2	25 MO	0400 1104 1821 2248	0.9 3.1 1.0 1.8	10 WE	0527 1150 1857 2359	0.5 3.6 0.4 2.2	25 TH	0447 1113 1824 2327	0.8 3.4 0.8 2.2	10 WE	0449 1057 1802 2319	0.9 3.5 0.3 2.4	25 TH	0411 1014 1728 2247	1.1 3.3 0.7 2.3	10 SA	0529 1113 1809 2347	0.9 3.2 0.7 2.7	25 SU	0510 1046 1747 2327	0.9 3.3 0.5 2.9
11 MO	0458 1127 1831 2324	0.4 3.5 0.7 2.1	26 TU	0418 1117 1836 2308	0.8 3.2 1.0 1.9	11 TH	0557 1220 1928	0.5 3.6 0.5	26 FR	0522 1143 1850 2358	0.6 3.5 0.7 2.4	11 TH	0518 1124 1828 2343	0.6 3.5 0.5 2.4	26 FR	0442 1042 1751 2311	0.9 3.4 0.6 2.5	11 SU	0554 1134 1824	1.0 3.1 0.8	26 MO	0552 1124 1817	0.9 3.3 0.5
12 TU	0530 1201 1913	0.4 3.6 0.6	27 WE	0443 1136 1852 2335	0.7 3.3 1.0 2.0	12 FR	0029 0624 1248 1957	2.2 0.5 3.4 0.7	27 SA	0558 1216 1921	0.6 3.5 0.7	12 FR	0546 1150 1852	0.6 3.4 0.6	27 SA	0519 1115 1819 2343	0.8 3.5 0.6 2.7	12 MO	0010 0613 1148 1831	2.7 1.1 2.9 0.8	27 TU	0003 0636 1203 1847	3.1 0.9 3.1 0.6
13 WE	0005 0601 1236 1954	2.0 0.5 3.6 0.6	28 TH	0511 1202 1916	0.6 3.3 0.9	13 SA	0059 0642 1313 2024	2.1 0.7 3.3 0.9	28 SU	0034 0633 1251 1954	2.4 0.6 3.5 0.8	13 SA	0009 0610 1213 1913	2.5 0.7 3.3 0.8	28 SU	0558 1151 1850	0.7 3.5 0.6	13 TU	0030 0614 1155 1800	2.8 1.3 2.7 0.9	28 WE	0040 0722 1242 1913	3.3 1.0 2.8 0.7
14 TH	0043 0631 1312 2034	2.0 0.6 3.5 0.7	29 FR	0008 0534 1234 1949	2.0 0.6 3.4 0.9	14 SU	0125 0538 1330 2050	2.0 0.9 3.1 1.1	15 MO	0146 0547 1330 2105	1.9 1.0 2.8 1.3	14 SU	0033 0627 1230 1929	2.5 0.8 3.2 0.9	29 MO	0019 0637 1226 1921	2.8 0.7 3.4 0.6	14 WE	0045 0541 1153 1732	2.8 1.4 2.5 0.9	29 TH	0121 0816 1322 1739	3.3 1.2 2.3 0.9
15 FR	0122 0648 1348 2116	1.8 0.7 3.3 0.9	30 SA	0044 0522 1309 2026	2.1 0.6 3.3 0.9	15 MO						15 MO	0054 0527 1237 1934	2.4 1.0 3.0 1.1	30 TU	0057 0718 1302 1950	2.9 0.9 3.2 0.8	15 TH	0056 0558 1113 1731	2.7 1.6 2.3 0.9	30 FR	0206 0933 1410 1755	3.2 1.4 1.9 1.1
			31 SU	0122 0541 1344 2109	2.0 0.7 3.2 1.0										31 WE	0135 0804 1336 2013	2.9 1.2 2.7 1.0						

* CORRECTION TO CHART DATUM INCLUDED IN TABLE I
SEE CHAPTER 5

58100

AUSTRALIA, QUEENSLAND - TWIN ISLAND

LAT 10° 28' S LONG 142° 26' E

TIME ZONE -1000

TIMES AND HEIGHTS OF HIGH AND LOW WATERS

YEAR 2021

MAY					JUNE					JULY					AUGUST								
	Time	m		Time	m		Time	m		Time	m		Time	m		Time	m		Time	m			
1 SA	0307 1239 1544 1802	3.0 1.3 1.4 1.2	16 SU	0045 1715	2.8 0.9	1 TU	0529 1413 2146	2.9 0.7 2.0	16 WE	0303 1358	2.6 1.2	1 TH	0532 1414 2218	2.5 0.9 2.1	16 FR	0340 1319	2.6 1.2	1 SU	0458 0927 1500 2220	1.6 1.8 1.2 2.6	16 MO	0336 0832 1427 2135	1.5 1.8 1.2 2.8
2 SU	0441 1428	2.8 0.9	17 MO	0046 1717	2.6 1.0	2 WE	0040 0648 1458 2157	1.8 2.8 0.7 2.2	17 TH	0432 1417 2351	2.5 1.1 2.0	2 FR	0203 0657 1455 2221	1.9 2.3 0.9 2.3	17 SA	0446 1408 2203	2.3 1.1 2.2	2 MO	0507 0959 1514 2221	1.3 1.8 1.2 2.8	17 TU	0416 0922 1508 2150	1.1 1.9 1.0 3.1
3 MO	0640 1509 2205	2.8 0.6 2.2	18 TU	0109 1531	2.5 1.0	3 TH	0222 0751 1531 2202	1.7 2.7 0.6 2.3	18 FR	0042 0602 1443 2209	2.0 2.5 0.9 2.0	3 SA	0326 0814 1524 2221	1.7 2.2 0.9 2.5	18 SU	0231 0723 1446 2140	1.8 2.1 0.9 2.5	3 TU	0527 1022 1522 2232	1.1 1.8 1.1 3.0	18 WE	0450 0955 1546 2215	0.8 2.0 0.9 3.4
4 TU	0154 0802 1540 2209	1.8 2.9 0.5 2.3	19 WE	0640 1519 2310	2.5 0.9 2.1	4 FR	0319 0837 1557 2213	1.6 2.6 0.7 2.5	19 SA	0223 0737 1513 2138	1.8 2.6 0.8 2.3	4 SU	0421 0907 1541 2232	1.6 2.1 0.9 2.7	19 MO	0336 0836 1521 2155	1.5 2.1 0.8 2.9	4 WE	0550 1036 1533 2247	1.0 1.8 1.0 3.1	19 TH	0524 1028 1623 2244	0.5 2.2 0.7 3.6
5 WE	0258 0843 1607 2211	1.5 3.0 0.4 2.4	20 TH	0205 0739 1528 2216	2.0 2.7 0.8 2.1	5 SA	0402 0914 1617 2233	1.5 2.5 0.7 2.7	20 SU	0321 0834 1544 2157	1.6 2.6 0.7 2.7	5 MO	0506 0945 1551 2249	1.4 2.0 0.9 2.9	20 TU	0431 0928 1554 2223	1.2 2.2 0.7 3.2	5 TH	0610 1044 1550 2300	1.0 1.8 1.0 3.1	20 FR	0558 1101 1701 2317	0.4 2.3 0.5 3.6
6 TH	0339 0916 1632 2223	1.4 3.0 0.5 2.5	21 FR	0247 0819 1549 2150	1.7 2.8 0.7 2.3	6 SU	0441 0946 1630 2256	1.4 2.4 0.8 2.8	21 MO	0412 0923 1616 2227	1.3 2.5 0.6 3.0	6 TU	0545 1013 1557 2308	1.3 1.9 0.9 3.0	21 WE	0520 1016 1630 2255	0.9 2.2 0.6 3.5	6 FR	0627 1057 1613 2316	1.0 1.9 0.8 3.2	21 SA	0631 1136 1738 2352	0.4 2.3 0.5 3.6
7 FR	0414 0946 1654 2243	1.3 3.0 0.6 2.6	22 SA	0331 0859 1616 2208	1.5 2.9 0.6 2.6	7 MO	0516 1013 1639 2319	1.4 2.3 0.8 2.9	22 TU	0503 1010 1649 2301	1.1 2.5 0.5 3.3	7 WE	0617 1036 1604 2324	1.3 1.9 0.8 3.1	22 TH	0605 1100 1707 2332	0.7 2.2 0.5 3.6	7 SA	0639 1118 1641 2339	1.0 2.0 0.7 3.2	22 SU	0703 1209 1813	0.4 2.3 0.5
8 SA	0446 1013 1712 2306	1.2 2.9 0.7 2.7	23 SU	0416 0940 1645 2237	1.3 3.0 0.5 2.9	8 TU	0548 1037 1641 2338	1.4 2.2 0.8 3.0	23 WE	0554 1056 1722 2338	0.9 2.2 0.5 3.5	8 TH	0643 1058 1615 2337	1.2 1.9 0.8 3.1	23 FR	0647 1143 1746	0.5 2.2 0.5	8 SU	0655 1148 1705	1.0 2.1 0.7	23 MO	0026 0734 1243 1844	3.6 0.6 2.3 0.6
9 SU	0516 1038 1725 2330	1.2 2.8 0.7 2.8	24 MO	0501 1022 1716 2312	1.1 2.9 0.5 3.1	9 WE	0617 1101 1630 2353	1.4 2.1 0.7 3.1	24 TH	0645 1143 1756	0.8 2.3 0.5	9 FR	0700 1125 1631 2355	1.2 1.9 0.7 3.2	24 SA	0010 0728 1225 1824	3.7 0.5 2.2 0.5	9 MO	0009 0721 1221 1713	3.3 1.0 2.1 0.7	24 TU	0057 0803 1316 1906	3.4 0.8 2.2 0.8
10 MO	0543 1058 1734 2352	1.3 2.7 0.8 2.9	25 TU	0548 1105 1747 2348	1.0 3.0 0.5 3.4	10 TH	0640 1128 1633	1.4 2.0 0.7	25 FR	0019 0735 1231 1831	3.6 0.7 2.1 0.6	10 SA	0716 1156 1644	1.2 1.9 0.7	25 SU	0050 0807 1306 1901	3.6 0.6 2.1 0.6	10 TU	0042 0754 1259 1731	3.3 1.0 2.1 0.7	25 WE	0123 0832 1347 1746	3.1 1.0 2.1 1.1
11 TU	0607 1116 1728	1.4 2.5 0.8	26 WE	0636 1148 1817	0.9 2.6 0.6	11 FR	0008 0706 1157 1642	3.1 1.4 1.9 0.8	26 SA	0102 0827 1318 1907	3.6 0.7 2.0 0.8	11 SU	0019 0742 1230 1659	3.1 1.2 1.9 0.7	26 MO	0130 0846 1346 1931	3.5 0.7 2.0 0.8	11 WE	0116 0830 1339 1756	3.2 1.1 2.1 0.9	26 TH	0138 0857 1415 1800	2.8 1.2 2.0 1.3
12 WE	0010 0628 1134 1656	3.0 1.4 2.4 0.7	27 TH	0027 0728 1232 1845	3.5 0.9 2.4 0.7	12 SA	0026 0739 1225 1652	3.1 1.5 1.8 0.8	27 SU	0149 0919 1410 1759	3.5 0.8 1.8 1.0	12 MO	0048 0818 1305 1722	3.1 1.2 1.8 0.8	27 TU	0208 0928 1427 1812	3.3 0.9 1.9 1.1	12 TH	0150 0910 1423 1822	3.1 1.2 2.0 1.1	27 FR	0123 0855 1443 1808	2.5 1.4 1.9 1.5
13 TH	0025 0650 1151 1659	3.0 1.5 2.1 0.8	28 FR	0109 0827 1321 1722	3.5 1.0 2.1 0.9	13 SU	0044 0823 1249 1708	3.0 1.5 1.6 0.8	28 MO	0239 1016 1506 1814	3.3 0.9 1.7 1.2	13 TU	0122 0903 1345 1749	3.0 1.3 1.8 0.9	28 WE	0242 1016 1510 1821	3.0 1.1 1.7 1.3	13 FR	0224 1005 1517 1840	2.8 1.3 1.9 1.5	28 SA	0014 0645 1239	2.3 1.4 2.3
14 FR	0039 0720 1045 1702	3.0 1.6 1.9 0.8	29 SA	0158 0938 1419 1743	3.4 1.0 1.7 1.0	14 MO	0104 0728	2.9 0.9	29 TU	0332 1123 1615 1828	3.1 1.0 1.5 1.4	14 WE	0202 1004 1434 1816	2.9 1.3 1.7 1.1	29 TH	0312 1120 1609 1821	2.6 1.2 1.6 1.5	14 SA	0300 1211 2204	2.4 1.4 2.0	29 SU	0616 1058 1442 2215	1.3 1.8 1.6 2.5
15 SA	0047 0801 1008 1707	2.9 1.8 1.9 0.8	30 SU	0258 1105 1537 1802	3.2 1.0 1.5 1.2	15 TU	0139 0747	2.7 1.1	30 WE	0428 1301	2.8 1.0	15 TH	0248 1145 1536 1833	2.8 1.3 1.6 1.3	30 FR	0328 1332 2246	2.3 1.3 2.2	15 SU	0137 0345 1338 2132	1.9 2.0 1.3 2.4	30 MO	0524 1051 1505 2153	1.2 1.8 1.6 2.6
31 MO			31 MO	0409 1255	3.0 0.9							31 SA			31 SA	1431 2235	1.2 2.4				31 TU	0501 1045 1514 2152	1.0 1.9 1.5 2.8

* CORRECTION TO CHART DATUM INCLUDED IN TABLE I
SEE CHAPTER 5

58100

AUSTRALIA, QUEENSLAND - TWIN ISLAND

LAT 10° 28' S LONG 142° 26' E

TIME ZONE -1000

TIMES AND HEIGHTS OF HIGH AND LOW WATERS

YEAR 2021

SEPTEMBER					OCTOBER					NOVEMBER					DECEMBER				
	Time	m		Time	m		Time	m		Time	m		Time	m		Time	m		
1 WE	0507 1047 1515 2201	0.8 1.9 1.4 3.0	16 TH	0438 1010 1542 2154	0.4 2.2 1.0 3.4	1 FR	0441 1037 1521 2129	0.6 2.1 1.4 3.1	16 SA	0439 1016 1606 2154	0.2 2.5 0.9 3.3	1 MO	0427 1011 1606 2144	0.5 2.4 1.2 3.1	16 TU	0454 1054 1707 2222	0.5 2.8 1.2 2.7		
2 TH	0521 1046 1526 2211	0.7 1.9 1.2 3.1	17 FR	0506 1028 1618 2223	0.3 2.3 0.8 3.5	2 SA	0451 1021 1543 2149	0.6 2.1 1.2 3.2	17 SU	0506 1038 1640 2223	0.3 2.6 0.9 3.3	2 TU	0452 1034 1647 2219	0.5 2.6 1.0 3.1	17 WE	0509 1120 1740 2244	0.6 2.9 1.3 2.5		
3 FR	0535 1039 1547 2226	0.8 2.0 1.1 3.2	18 SA	0535 1052 1653 2254	0.3 2.4 0.6 3.5	3 SU	0505 1026 1613 2216	0.7 2.3 1.0 3.3	18 MO	0529 1103 1712 2251	0.4 2.6 0.9 3.1	3 WE	0520 1105 1730 2257	0.5 2.9 1.0 3.0	18 TH	0517 1143 1811 2301	0.6 2.9 1.4 2.3		
4 SA	0548 1044 1616 2247	0.8 2.1 0.9 3.3	19 SU	0603 1120 1726 2323	0.4 2.5 0.6 3.5	4 MO	0525 1048 1650 2247	0.6 2.4 0.9 3.3	19 TU	0550 1130 1743 2314	0.5 2.7 1.0 3.0	4 TH	0550 1140 1815 2336	0.5 3.1 1.0 2.9	19 FR	0456 1202 1838 2317	0.6 3.0 1.5 2.1		
5 SU	0602 1104 1649 2315	0.8 2.2 0.8 3.3	20 MO	0629 1148 1757 2352	0.5 2.5 0.6 3.4	5 TU	0552 1118 1731 2321	0.6 2.6 0.8 3.3	20 WE	0607 1156 1809 2332	0.7 2.7 1.1 2.8	5 FR	0618 1217 1903	0.5 3.2 1.0	20 SA	0432 1214 1903 2335	0.6 3.0 1.5 1.9		
6 MO	0624 1133 1725 2348	0.8 2.3 0.7 3.4	21 TU	0652 1217 1824	0.6 2.5 0.8	6 WE	0621 1153 1812 2357	0.6 2.7 0.8 3.2	21 TH	0616 1219 1831 2340	0.8 2.8 1.3 2.6	6 SA	0017 0643 1257 1958	2.6 0.7 3.3 1.1	21 SU	0443 1226 1931 2215	0.6 3.0 1.6 1.7		
7 TU	0652 1208 1802	0.8 2.4 0.7	22 WE	0015 0713 1245 1839	3.2 0.8 2.5 1.1	7 TH	0651 1231 1855	0.6 2.9 0.9	22 FR	0510 1236 1730 2336	0.8 2.8 1.5 2.3	7 SU	0059 0512 1343 2114	2.2 0.8 3.2 1.2	22 MO	0448 1236 2017 2103	0.7 2.8 1.7 1.7		
8 WE	0021 0724 1245 1834	3.4 0.8 2.5 0.8	23 TH	0029 0727 1308 1724	2.9 1.0 2.4 1.2	8 FR	0033 0719 1311 1944	3.0 0.8 2.9 1.2	23 SA	0510 1247 1750 2251	0.8 2.7 1.7 2.1	8 MO	0150 0531 1445 2333	1.8 0.9 3.1 1.1	23 TU	0447 1231	0.7 2.7		
9 TH	0055 0756 1325 1757	3.3 0.9 2.5 1.0	24 FR	0025 0600 1239 1757	2.6 1.1 2.4 1.2	9 SA	0108 0551 1354 2046	2.7 1.0 2.8 1.4	24 SU	0513 1249 1806 2154	0.8 2.6 1.9 2.0	9 TU	1613	2.9	24 WE	0450 1218	0.8 2.6		
10 FR	0128 0826 1409 1819	3.0 1.0 2.4 1.4	25 SA	0554 1327 1756 2257	1.1 2.2 1.7 2.2	10 SU	0145 0601 1452	2.2 1.1 2.7	25 MO	0507 1220 1804 2121	0.8 2.5 2.0 2.1	10 WE	0135 1758	0.8 2.9	25 TH	0450 1224	0.8 2.5		
11 SA	0200 0852 1502 2141	2.6 1.3 2.3 1.8	26 SU	0548 1236 1748 2209	1.0 2.2 1.9 2.3	11 MO	0607 1636	1.2 2.6	26 TU	0458 1155 1727 2005	0.8 2.5 2.1 2.2	11 TH	0231 0934 1306 1922	0.5 2.1 1.7 3.0	26 FR	0328 1838	0.8 2.4		
12 SU	0224 0657 1648	2.0 1.4 2.2	27 MO	0529 1153 1555 2127	1.0 2.1 2.0 2.4	12 TU	0238 0950 1216 1951	1.0 1.9 1.8 2.8	27 WE	0439 1139 1523 2015	0.8 2.4 2.1 2.4	12 FR	0309 0945 1422 2013	0.3 2.3 1.4 3.0	27 SA	0313 1108 1415 1925	0.8 2.2 2.0 2.5		
13 MO	0340 0954 1306 2052	1.5 1.8 1.6 2.7	28 TU	0501 1122 1516 2109	0.9 2.1 1.9 2.6	13 WE	0313 0952 1352 2025	0.6 2.1 1.6 3.1	28 TH	0358 1108 1502 2019	0.7 2.3 2.0 2.6	13 SA	0340 0952 1512 2051	0.2 2.4 1.3 3.0	28 SU	0318 1039 1441 2002	0.7 2.1 1.8 2.6		
14 TU	0346 1000 1415 2109	1.0 1.9 1.4 3.0	29 WE	0432 1057 1516 2111	0.7 2.1 1.8 2.7	14 TH	0343 0957 1448 2055	0.3 2.3 1.3 3.2	29 FR	0352 1045 1453 2026	0.7 2.2 1.8 2.7	14 SU	0409 1007 1554 2125	0.3 2.6 1.2 2.9	29 MO	0333 1003 1518 2039	0.6 2.2 1.6 2.7		
15 WE	0411 1003 1502 2130	0.6 2.1 1.2 3.2	30 TH	0432 1047 1514 2117	0.7 2.1 1.6 2.9	15 FR	0411 1003 1530 2125	0.2 2.4 1.1 3.3	30 SA	0358 1028 1503 2046	0.6 2.2 1.6 2.9	15 MO	0434 1029 1631 2155	0.4 2.7 1.2 2.8	30 TU	0356 1004 1600 2119	0.5 2.5 1.4 2.7		
									31 SU	0409 1005 1530 2112	0.6 2.2 1.4 3.0					31 FR	0430 1052 1744 2242	0.5 3.3 0.9 2.2	

* CORRECTION TO CHART DATUM INCLUDED IN TABLE I
SEE CHAPTER 5

58100

To accompany Australian Notice to Mariners 904/2020

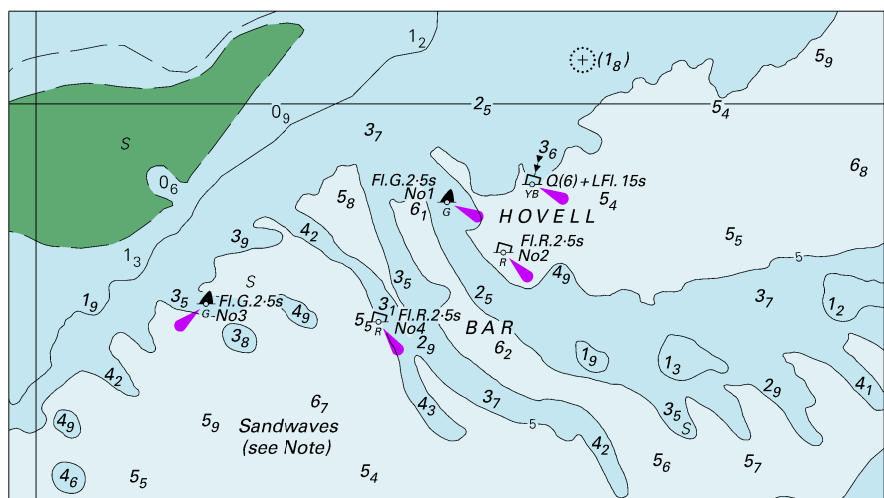
Tidal Levels referred to Datum of Soundings								
Place	Lat S	Long E	Heights in metres above datum					
			HAT	MHHW	MLHW	MSL	MHLW	MLLW
Dregerhafen	6° 39'	147° 53'	1.4	1.2	1.1	0.8	0.5	0.3
Finschhafen	6 33	147 51	1.0	0.9	0.7	0.5	0.2	0.1
Lae	6 45	147 00	1.3	1.2	1.1	0.7	0.4	0.3

Block for chart PNG 523

© Commonwealth of Australia 2020

(137.0 x 39.1mm)

To accompany Australian Notice to Mariners 906/2020

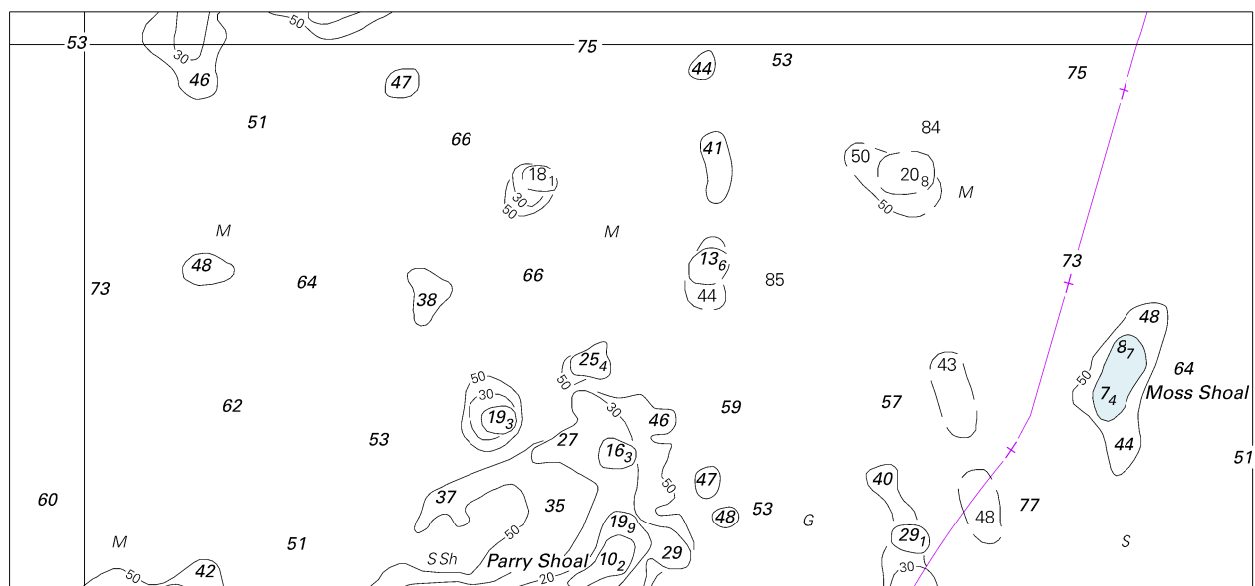


Block for chart Aus 299

© Commonwealth of Australia 2020

(115.7 x 64.7mm)

To accompany Australian Notice to Mariners 908/2020



(118.4 x 208.5mm)