



21 August 2020

Edition 17

# AUSTRALIAN NOTICES TO MARINERS

**Notices 642 - 684**

Published fortnightly by the Australian Hydrographic Office



Australian Notices to Mariners are the authority for correcting charts and publications published by the Australian Hydrographic Office covering Australia, Papua New Guinea, Solomon Islands, Australian Antarctic Territory and Timor-Leste.

Commodore F.T. FREEMAN RAN  
*Hydrographer of Australia*

---

## SECTIONS.

- I. **Australian Notices to Mariners, including blocks and notes.**
- II. **Hydrographic Reports.**

## SUPPLEMENTS.

- I. **Tracings**
- II. **Cumulative List of Australian Notices to Mariners.**
- III. **Cumulative List of Temporary and Preliminary Australian Notices to Mariners.**
- IV. **Temporary and Preliminary Notices in force.**

---

© Commonwealth of Australia 2020

This work is copyright. Apart from any use permitted under the Copyright Act 1968, no part may be reproduced by any process, adapted, communicated or commercially exploited without prior written permission from The Commonwealth represented by the Australian Hydrographic Office.

## IMPORTANT NOTICE

This edition of Notices to Mariners includes all significant information affecting AHO products which the AHO has become aware of since the last edition. All reasonable efforts have been made to ensure the accuracy and completeness of the information, including third party information, on which these updates are based. The AHO regards third parties from which it receives information as reliable, however the AHO cannot verify all such information and errors may therefore exist. The AHO does not accept liability for errors in third party information.

---

## GENERAL INSTRUCTIONS

The substance of these notices should be inserted on the charts affected.

Bearings are referred to the true compass and are reckoned clockwise from North; those relating to lights are given as seen by an observer from seaward.

Positions quoted in notices relate to WGS84 which is the horizontal datum for all charts produced by the Australian Hydrographic Office.

The range quoted for a light is its nominal range.

Depths are with reference to the chart datum of each chart. Heights are above mean high water springs or mean higher high water, as appropriate.

The capital letter (P) or (T) after the number of any notice denotes a preliminary or temporary notice respectively, which are contained separately at the end of the permanent notices.

---

## REPORTING OF DANGERS

Mariners are particularly requested to notify the AUSTRALIAN HYDROGRAPHIC OFFICE, Locked Bag 8801 Wollongong, NSW 2500 (Fax 02-4223 6599, e-mail [datacentre@hydro.gov.au](mailto:datacentre@hydro.gov.au) or, alternatively by filling in and submitting the [Hydrographic Notes](#) forms located on the web site – [www.hydro.gov.au](http://www.hydro.gov.au)), immediately on the discovery of new dangers or suspected dangers to navigation. For changes or defects in aids to navigation notify AusSAR (Fax 02-6230 6868 or email [rccaus@amsa.gov.au](mailto:rccaus@amsa.gov.au)).

---

## AUTHORISED USE

Copies of Australian notices are available free of charge from the Australian Hydrographic Office (AHO) website ([www.hydro.gov.au](http://www.hydro.gov.au)) and through the eNotices (email) service ([www.hydro.gov.au/enotices/enotices.htm](http://www.hydro.gov.au/enotices/enotices.htm)).

Individual Notices may be copied for the purpose of inserting Notice substance on official charts and publications. Paper copies may be printed by chart agents and distributed to customers on a cost recovery basis. Participating chart agents are listed on the AHO website as providing a 'Paper Notices to Mariners' service ([www.hydro.gov.au/webapps/jsp/agents/agents-list.jsp](http://www.hydro.gov.au/webapps/jsp/agents/agents-list.jsp)). Copies of the notices may not be sold for profit without prior written agreement.

## NUMERICAL INDEX OF NOTICES TO MARINERS

### Edition No 17

Notices	Aus Chart, INT Chart, ENC Cell, AHP, BA Pubs
<a href="#">642</a>	Aus 148, 196, 297, 332, 386, 548, 651, 755, 802, PNG 386, 548, 651
<a href="#">643</a>	Aus 51, 208, 280, 281, 388, 396
<a href="#">644</a>	Papua New Guinea chart coverage
<a href="#">645</a>	Aus 198
<a href="#">646</a>	Aus 807, 808
<a href="#">647</a>	Aus 198
<a href="#">648</a>	Aus 4, 301
<a href="#">649</a>	Aus 236
<a href="#">650</a>	Aus 396, 4620, 4621, 4622, INT 620, 621, 622
<a href="#">651</a>	Aus 841
<a href="#">652</a>	Aus 388, 389
<a href="#">653</a>	Aus 837, 839, 840
<a href="#">654</a>	Aus 4603, 4720, INT 603, 720
<a href="#">655</a>	Aus 328
<a href="#">656</a>	Aus 143, 155
<a href="#">657</a>	Aus 487
<a href="#">658(T)</a>	Aus 254
<a href="#">659(T)</a>	Aus 244, 245, 271
<a href="#">660(T)</a>	Aus 245, 246, 247, 271, 819
<a href="#">661(T)</a>	Aus 245, 246, 247, 271, 272, 819
<a href="#">662(T)</a>	Aus 268
<a href="#">663(T)</a>	Aus 258
<a href="#">664(T)</a>	Aus 252
<a href="#">665(T)</a>	Aus 236
<a href="#">666(T)</a>	Aus 236
<a href="#">667(T)</a>	Aus 819
<a href="#">668(T)</a>	Aus 841
<a href="#">669(T)</a>	Aus 521, 522, 523, 4620, 4621, 4622, INT 620, 621, 622, PNG 386
<a href="#">670(T)</a>	Aus 386, 521, 522, 523, 4620, 4621, 4622, INT 620, 621, 622
<a href="#">671(T)</a>	Aus 386
<a href="#">672(T)</a>	Aus 24, 25, 26, 27, 29, 309, 314, 315, 316, 319, 722, 4721, 4722, INT 721, 722
<a href="#">673(T)</a>	Aus 65
<a href="#">674(T)</a>	Aus 65
<a href="#">675(T)</a>	Aus 110, 118, 336, 337
<a href="#">676(T)</a>	Aus 328, 4723, INT 723
<a href="#">677(T)</a>	Aus 4723, INT 723
<a href="#">678(T)</a>	Aus 137
<a href="#">679(T)</a>	Aus 127
<a href="#">680(T)</a>	Aus 135
<a href="#">681(T)</a>	Aus 143, 154, 155
<a href="#">682(P)</a>	Aus 179, 798, 800
<a href="#">683(T)</a>	Aus 177
<a href="#">684(T)</a>	Aus 766

# NUMERICAL INDEX OF CHARTS AFFECTED

## Edition No 17

Aus Chart	Notices
Aus 4	648
Aus 24	672(T)
Aus 25	672(T)
Aus 26	672(T)
Aus 27	672(T)
Aus 29	672(T)
Aus 51	643
Aus 65	673(T), 674(T)
Aus 110	675(T)
Aus 118	675(T)
Aus 127	679(T)
Aus 135	680(T)
Aus 137	678(T)
Aus 143	656, 681(T)
Aus 148	642
Aus 154	681(T)
Aus 155	656, 681(T)
Aus 177	683(T)
Aus 179	682(P)
Aus 196	642
Aus 198	645, 647
Aus 208	643
Aus 236	649, 665(T), 666(T)
Aus 244	659(T)
Aus 245	659(T), 660(T), 661(T)
Aus 246	660(T), 661(T)
Aus 247	660(T), 661(T)
Aus 252	664(T)
Aus 254	658(T)
Aus 258	663(T)
Aus 268	662(T)
Aus 271	659(T), 660(T), 661(T)
Aus 272	661(T)
Aus 280	643
Aus 281	643
Aus 297	642
Aus 301	648
Aus 309	672(T)
Aus 314	672(T)
Aus 315	672(T)
Aus 316	672(T)
Aus 319	672(T)
Aus 328	655, 676(T)
Aus 332	642
Aus 336	675(T)
Aus 337	675(T)
Aus 386	642, 670(T), 671(T)
Aus 388	643, 652
Aus 389	652
Aus 396	643, 650
Aus 487	657
Aus 521	669(T), 670(T)
Aus 522	669(T), 670(T)
Aus 523	669(T), 670(T)

Aus Chart	Notices
Aus 548	642
Aus 651	642
Aus 722	672(T)
Aus 755	642
Aus 766	684(T)
Aus 798	682(P)
Aus 800	682(P)
Aus 802	642
Aus 807	646
Aus 808	646
Aus 819	660(T), 661(T), 667(T)
Aus 837	653
Aus 839	653
Aus 840	653
Aus 841	651, 668(T)
Aus 4603	654
Aus 4620	650, 669(T), 670(T)
Aus 4621	650, 669(T), 670(T)
Aus 4622	650, 669(T), 670(T)
Aus 4720	654
Aus 4721	672(T)
Aus 4722	672(T)
Aus 4723	676(T), 677(T)
PNG 386	642, 669(T)
PNG 548	642
PNG 651	642

INT Chart	Notices
INT 603	654
INT 620	650, 669(T), 670(T)
INT 621	650, 669(T), 670(T)
INT 622	650, 669(T), 670(T)
INT 720	654
INT 721	672(T)
INT 722	672(T)
INT 723	676(T), 677(T)

**642 AUSTRALIA - Products - New Charts, New Editions, Withdrawn Charts**

Australian Hydrographic Office , UKHO

**New Charts**

<i>Chart</i>	<i>Title</i>	<i>Scale</i>	<i>Publication Date</i>	<i>Remarks</i>
PNG 386	South Pacific Ocean - Papua New Guinea - New Britain - Cape Cretin to Vitu Islands 4° 18' 81 S – 7° 08' 00 S 147° 47' 55 E – 149° 34' 42 E	1:300 000	21 August 2020	Adoption of Papua New Guinea chart numbering. Replaces Aus 386. General updating throughout; including latest bathymetric data.
PNG 548	Papua New Guinea - New Britain - Eleonora Bay to Cape Gloucester 4° 45' 15 S – 5° 38' 70 S 148° 19' 50 E – 149° 43' 95 E	1:150 000	21 August 2020	Adoption of Papua New Guinea chart numbering. Replaces Aus 548. General updating throughout; including latest bathymetric data.
PNG 651	Papua New Guinea - North Coast - Approaches to Wewak 3° 13' 84 S – 3° 39' 40 S 143° 24' 31 E – 143° 50' 04 E Plans: Wewak Wharves 3° 33' 43 S – 3° 34' 60 S 143° 38' 36 E – 143° 39' 90 E Wewak Harbour 3° 30' 53 S – 3° 35' 00 S 143° 37' 30 E – 143° 42' 43 E	1:75 000  1:7 500  1:25 000	21 August 2020	Adoption of Papua New Guinea chart numbering. Replaces Aus 651. General updating throughout; including latest bathymetric data.

**New Electronic Navigation Chart (Aus ENC)**

<i>Cell Name</i>	<i>Title</i>	<i>Publication Date</i>	<i>Remarks</i>
AU5WHL01	Australia - Victoria - Port Welshpool	20 August 2020	AU5182P4 has been withdrawn.
AU5PAB01	Australia - Victoria - Port Albert	20 August 2020	AU5182P3 has been withdrawn.
AU5FOT01	Australia - New South Wales - Forster (Cape Hawke Harbour)	20 August 2020	AU5219P1 has been withdrawn.
AU5KMA01	Australia - New South Wales - Kiama	20 August 2020	AU5191P2 has been withdrawn.
AU5BMG01	Australia - New South Wales - Bermagui	20 August 2020	AU5191P4 has been withdrawn.
AU5JEB01	Australia - New South Wales - Jervis Bay	20 August 2020	AU5193P0 has been withdrawn.
AU5BAR01	Australia - Victoria - Barry Beach Marine Terminal	20 August 2020	AU5182P1 has been withdrawn.
AU5JML01	Australia - New South Wales - Laurieton (Camden Haven)	20 August 2020	AU5219P2 has been withdrawn.
PG5509P1	Papua New Guinea - Louisiade Archipelago - Conflict Group	20 August 2020	AU5509P1 has been withdrawn.
PG5539P1	Papua New Guinea - Lihir Island - Luise Harbour	20 August 2020	AU5539P1 has been withdrawn.
PG5624P1	Solomon Sea - Alotau	20 August 2020	AU5624P1 has been withdrawn.
PG5624P2	Solomon Sea - Samarai Island	20 August 2020	AU5624P2 has been withdrawn.
PG5662P2	Admiralty Islands - Lombrum Bay	20 August 2020	AU5662P2 has been withdrawn.

**642 AUSTRALIA - Products - New Charts, New Editions, Withdrawn Charts**
**New Editions and Withdrawn Charts**

<i>Chart</i>	<i>Title</i>	<i>Scale</i>	<i>Publication Date</i>	<i>Remarks</i>
Aus 332 (Edition 3)	Australia - West Coast - Western Australia - Pepper Point to Geraldton	1:300 000	21 August 2020	New edition with general updating throughout; including latest bathymetric data. <b>Chart Aus 332 Edition 2 dated 25 September 2009 is now superseded and must be withdrawn from use.</b>
Aus 755 (Edition 3)	Australia - West Coast - Western Australia - Cape Peron to Cape Naturaliste	1:150 000	21 August 2020	New edition with general updating throughout; including latest bathymetric data. <b>Chart Aus 755 Edition 2 dated 16 January 2009 is now superseded and must be withdrawn from use.</b>
Aus 802 (Edition 2)	Australia - South Coast - Victoria - Cape Liptrap to Kent Group Plan: Refuge Cove and Sealers Cove	1:150 000  1:25 000	21 August 2020	New edition with general updating throughout; including latest bathymetric data. <b>Chart Aus 802 Edition 1 dated 26 July 2013 is now superseded and must be withdrawn from use.</b>

**Charts withdrawn**

<i>Chart</i>	<i>Remarks</i>
Aus 148	On publication of new edition Aus 802
Aus 386	On publication of new chart PNG 386
Aus 548	On publication of new chart PNG 548
Aus 651	On publication of new chart PNG 651

**Charts withdrawn without replacement**

<i>Chart</i>	<i>Title</i>	<i>Scale</i>	<i>Publication Date</i>
Aus 196 Edition 1	Australia - East Coast - New South Wales - Port Botany	1:7 500	7 September 2012
Aus 297 Edition 1	Torres Strait - Great North East Channel - Basilisk Passage to Moon Passage	1:50 000	7 October 2011

**Admiralty publication**

<i>NP No</i>	<i>Title</i>	<i>Date</i>	<i>Remarks</i>
NP13 & e-NP13	ADMIRALTY Sailing Directions Australia Pilot Volume 1 (Sixth Edition) 2020.	27/8/2020	The Fifth Edition 2017 is cancelled.
NP204-21	ADMIRALTY Tide Tables, Volume 4 2021, South Pacific Ocean (including Tidal Stream Tables).	20/8/2020	New Edition 2021.

**Chart permanently withdrawn**

Charts listed above as withdrawn no longer meet chart carriage requirements and should be marked as "superseded" and replaced with the new chart/ new edition listed prior to passage through the area covered by the new chart.

When placing orders with a chart agent between notice of forthcoming edition and its publication, mariners should advise whether their order pertains to the current edition or the new edition.

For further details refer to the AHO website at [www.hydro.gov.au](http://www.hydro.gov.au) for new edition and new chart stock arrival information.

**643 AUSTRALIA - Products - New Charts and New Editions to be published shortly**  
Australian Hydrographic Office

**New Charts to be published shortly**

<i>Chart</i>	<i>Title</i>	<i>Scale</i>	<i>Remarks</i>
PNG 388	Papua New Guinea - North Coast - Karkar Island to Kairiru Island Plans: Bogia Harbour Entrance to Sepik River	1:300 000  1:37 500 1:50 000	Adoption of Papua New Guinea chart numbering. Replaces Aus 388. General updating throughout; including latest bathymetric data.
PNG 396	Papua New Guinea - New Britain - South Coast - Cape Anukur to Cape Kwoi	1:300 000	Adoption of Papua New Guinea chart numbering. Replaces Aus 396. General updating throughout; including latest bathymetric data.

**New Editions to be published shortly**

<i>Chart</i>	<i>Title</i>	<i>Scale</i>	<i>Remarks</i>
NIL			

**Charts to be withdrawn**

<i>Chart</i>	<i>Remarks</i>
Aus 388	On publication of new edition PNG 388
Aus 396	On publication of new edition PNG 396

**Charts to be withdrawn without replacement 4 September 2020**

<i>Chart</i>	<i>Title</i>	<i>Scale</i>	<i>Publication Date</i>
Aus 51 <b>Edition 4</b>	Australia - North West Coast - Western Australia - Broome	1:10 000	31 May 2019
Aus 208 <b>Edition 7</b>	Australia - East Coast - New South Wales - Newcastle Inset: Hunter River (South Arm)	1:7 500 1:10 000	18 May 2012

**Charts to be withdrawn without replacement 2 October 2020**

Aus 280 <b>Edition 5</b>	Australia - East Coast - Queensland - Plans in Queensland (Sheet 3) Plans: Magpie Reef to Eden Reef Flinders Group	1:75 000 1:50 000	22 February 2019
Aus 281 <b>Edition 3</b>	Australia - East Coast - Queensland - First Three Mile Opening to Cape Direction	1:75 000	22 February 2019

**644 PAPUA NEW GUINEA - Papua New Guinea chart coverage**  
Australian Hydrographic Service

Mariners are advised that ENC and paper nautical charts for Papua New Guinea (PNG) will be progressively revised as PNG paper charts and PG ENC. They will continue to be produced and updated by the Australian Hydrographic Office (AHO) on behalf of the PNG National Maritime Safety Authority.

Renaming of all affected paper charts and ENC cells are scheduled for completion by June 2021 with each product promulgated in the fortnightly AHO Notice to Mariners Edition.

**645 AUSTRALIA - NEW SOUTH WALES - Botany Bay - Bare Island - Light buoy**

Port Authority of New South Wales

**Aus 198 [466/2019]**Amend light buoy to *Fl(5)Y.20s* & *Fl.2s*

33° 59'.70 S

151° 13'.68 E

**646 AUSTRALIA - NEW SOUTH WALES - Jervis Bay - Darling Road - Harbour limit**

Australian Hydrographic Office

**Aus 807 [588/2020]**

Delete magenta dashed line, between

35° 07'.3 S

150° 42'.2 E

35° 06'.9 S

150° 45'.4 E

**Aus 808 [588/2020]**

Delete magenta dashed line, between

35° 07'.4 S

150° 42'.0 E

35° 06'.8 S

150° 46'.1 E

**647 AUSTRALIA - NEW SOUTH WALES - Port Botany - Chart withdrawn; ZOC diagram; chart limits; chart note; infrastructure; maintained depth**

Australian Hydrographic Office

*Note:* position of existing chart notes may vary on certain charts.**Aus 198 [645/2020]**

Insert accompanying block  
 chart note, ELECTRONIC NAVIGATIONAL CHART (ENC)  
 magenta legend, *ENC* (see *Note*), centred on  
 accompanying ZOC diagram

33° 58'.4 S

151° 12'.3 E

33° 59'.0 S

151° 06'.6 E

34° 00'.4 S

151° 14'.1 E

34° 02'.6 S

151° 02'.7 E

Delete chart note, OMISSIONS FROM CHART  
 magenta limits with legend, Aus 196, centred on

33° 58'.3 S

151° 05'.0 E

33° 59'.0 S

151° 12'.8 E

**648 AUSTRALIA - QUEENSLAND - Boyd Point - Fish aggregating devices westwards**

Department of Agriculture and Fisheries

**Aus 4 [595/2020]**Amend light buoy to *Fl. Y.3s FAD*

12° 49'.9 S

141° 32'.6 E

**Aus 301 [368/2020]**

Amend light buoy to *Fl. Y.3s FAD*  
 light buoy to *Fl. Y.3s FAD*  
 light buoy to *Fl. Y.3s FAD*  
 light buoy to *Fl. Y.3s FAD*

12° 48'.7 S

141° 23'.7 E

12° 49'.9 S

141° 32'.6 E

12° 54'.7 S

141° 22'.6 E

12° 59'.0 S

141° 17'.0 E

**649 AUSTRALIA - QUEENSLAND - Moreton Bay - Manly Boat Harbour - Light beacons**

Maritime Safety Queensland Notice 287(T)/2020

**Aus 236 [534/2020]**Insert light beacon, *Fl.R.3s*, with port lateral topmark

27° 26'.65 S

153° 12'.46 E

**Aus 236 (Manly Boat Harbour) [534/2020]**

Insert light beacon, *Fl.G.3s*, with starboard lateral topmark  
 light beacon, *Fl.R.3s*, with port lateral topmark

27° 26'.623 S

153° 12'.446 E

27° 26'.650 S

153° 12'.461 E



**650 PAPUA NEW GUINEA - Cape Cretin to Vitu Islands - Chart name**

Australian Hydrographic Office

**Aus 396 [232/2020]**

Amend	legend to PNG 548	5° 38'.5 S	149° 43'.0 E
	legend to PNG 548	5° 43'.8 S	150° 09'.5 E
	legend to <i>Adjoining Chart PNG 386</i> in W border	6° 40'.0 S	149° 12'.1 E

**Aus 4620 (INT 620) [596/2020]**

Amend	legend to PNG 386	7° 07'.0 S	149° 28'.0 E
-------	-------------------	------------	--------------

**Aus 4621 (INT 621) [234/2020]**

Amend	legend to PNG 386	7° 07'.0 S	149° 28'.0 E
-------	-------------------	------------	--------------

**Aus 4622 (INT 622) [370/2020]**

Amend	legend to PNG 386	4° 21'.0 S	149° 28'.0 E
	legend to PNG 548	4° 48'.0 S	148° 26'.0 E

**651 PAPUA NEW GUINEA - Saibai Island - Obstruction**HMAS *Shepparton***Aus 841 [597/2020]**

Insert	danger circle with legend <i>Obstn</i>	9° 22'.26 S	142° 35'.64 E
--------	--	-------------	---------------

**652 PAPUA NEW GUINEA - Wewak - Chart name**

Australian Hydrographic Office

**Aus 388 [370/2020]**

Amend	legend to PNG 651	3° 14'.3 S	143° 49'.0 E
	legend to PNG 651	4° 31'.8 S	144° 44'.7 E

**Aus 389 [413/2020]**

Amend	legend to PNG 651	3° 14'.3 S	143° 49'.0 E
	legend to PNG 651	3° 34'.0 S	141° 51'.3 E

**653 AUSTRALIA - TORRES STRAIT - Basilisk Passage to Moon Passage - Chart withdrawn; ZOC diagram; chart limits; chart note**

Australian Hydrographic Office

**Aus 837 [338/2020]**

Delete	magenta limits with legend, Aus 297, centred on	10° 07'.0 S	144° 02'.8 E
	magenta limits with legend, Aus 297, centred on	9° 52'.0 S	143° 11'.0 E

**Aus 839 [336/2020]**

Insert	accompanying note, ELECTRONIC NAVIGATIONAL CHART (ENC)	10° 52'.3 S	142° 28'.0 E
	accompanying ZOC diagram	11° 11'.0 S	142° 22'.5 E
	magenta legend, <i>ENC (see Note)</i> , centred on	9° 50'.8 S	143° 00'.6 E

Delete	magenta limits with legend, Aus 297, centred on	9° 52'.0 S	143° 04'.0 E
--------	---	------------	--------------

**Aus 840 [598/2020]**

Insert	accompanying note, ELECTRONIC NAVIGATIONAL CHART (ENC)	9° 02'.2 S	143° 07'.0 E
	magenta legend, <i>ENC (see Note)</i> , centred on	9° 34'.2 S	143° 10'.9 E
	magenta legend, <i>ENC (see Note)</i> , centred on	9° 50'.8 S	143° 00'.6 E

Delete	magenta limits with legend, Aus 297, centred on	9° 42'.0 S	143° 04'.0 E
--------	---	------------	--------------

**654 INDONESIA - Irian Jaya - Wreck**

UKHO BA Notice 35/4140/2020

**Aus 4603 (INT 603) [480/2020]**

Delete wreck 5° 18'.0 S 136° 37'.0 E

**Aus 4720 (INT 720) [822/2019]**

Delete wreck with legend, PA 5° 18'.0 S 136° 37'.0 E

**655 AUSTRALIA - WESTERN AUSTRALIA - Montebello Islands - Well northwestwards**

Woodside Energy Ltd

**Aus 328 [542/2020]**Insert depth, 860m, enclosed by danger circle with legend *Well*, centred on 19° 52'.58 S 115° 09'.01 E**656 AUSTRALIA - VICTORIA - Port Phillip - Mordialloc - Beacons**

Parks Victoria Notice 208/2020, 216/2020

**Aus 143 [483/2020]**

Insert special beacon with topmark 38° 01'.32 S 145° 05'.63 E

Move beacon to 38° 00'.87 S 145° 05'.22 E  
38° 00'.93 S 145° 05'.29 E**Aus 155 [417/2020]**Insert special beacon with topmark 38° 00'.804 S 145° 05'.173 E  
special beacon with topmark 38° 00'.985 S 145° 05'.352 E  
special beacon with topmark 38° 01'.323 S 145° 05'.631 EMove beacon to 38° 00'.87 S 145° 05'.22 E  
38° 00'.925 S 145° 05'.294 EDelete depth, 0<sub>3</sub>m 38° 00'.79 S 145° 05'.18 E**657 AUSTRALIA - BASS STRAIT - Kent Group - Chart withdrawn; chart limits**

Australian Hydrographic Office

**Aus 487 [416/2020]**Delete magenta limits with legend, Aus 148, centred on 38° 24'.2 S 146° 06'.4 E  
magenta limits with legend, Aus 148, centred on 39° 28'.0 S 147° 20'.0 E

**658(T)/2020 AUSTRALIA - QUEENSLAND - Black Island - Light beacon relit**

Former Notice - 511(T)/2020 is cancelled  
Maritime Safety Queensland

Cancel this notice on receipt.

**Chart formerly affected - Aus 254**

**659(T)/2020 AUSTRALIA - QUEENSLAND - Gladstone - Clinton Channel - Beacon installation works**

Maritime Safety Queensland Notice 255/2020, 256/2020

Barges *PMG181*, *PMG Black Panther* and support vessel *Titan* are conducting works to install new beacons.

The new beacons will be installed in positions 23° 49'.01 S 151° 14'.70 E and 23° 49'.74 S 151° 15'.30 E.

The new beacon structures will be temporarily marked by yellow flashing lights.

The port lateral light buoy, *Fl.R.4s A8* (23° 49'.77 S 151° 15'.30 E), will be withdrawn.

The vessels will display appropriate lights and shapes and will monitor VHF Ch 13, Ch 15 and Ch 16.

Mariners are advised to navigate with caution in the area.

**Chart temporarily affected - Aus 244 - Aus 245 - Aus 271**

**660(T)/2020 AUSTRALIA - QUEENSLAND - Gladstone - Boyne Island to Worthington Island - Scientific instruments**

Maritime Safety Queensland Notice 291(T)/2020

Special light buoys, *Fl.Y.6s*, exist in the following positions:

23° 42'.87 S 151° 08'.57 E

23° 47'.03 S 151° 18'.39 E

23° 47'.73 S 151° 14'.31 E

23° 48'.29 S 151° 12'.47 E

23° 54'.99 S 151° 21'.57 E.

**Chart temporarily affected - Aus 245 - Aus 246 - Aus 247 - Aus 271 - Aus 819**

**661(T)/2020 AUSTRALIA - QUEENSLAND - Gladstone - Rodds Harbour to Worthington Island - Scientific instruments**

Former Notice - 1098(T)/2019 is cancelled  
Maritime Safety Queensland Notice 283(T)/2020

Cancel this notice on receipt.

**Chart formerly affected - Aus 245 - Aus 246 - Aus 247 - Aus 271 - Aus 272 - Aus 819**

**662(T)/2020 AUSTRALIA - QUEENSLAND - Gloucester Passage - Light buoy off station**

Maritime Safety Queensland Notice 250(T)/2020

The east cardinal light buoy, *VQ(3)5s* (20° 03'.52 S 148° 27'.04 E), is off station.

**Chart temporarily affected - Aus 268**

**663(T)/2020 AUSTRALIA - QUEENSLAND - Hinchinbrook Channel - Oyster Point - Light beacon unlit**

Maritime Safety Queensland Notice 243(T)/2020

The light beacon, *Fl.R.5s* (18° 16'.45 S 146° 03'.25 E), is unlit.

**Chart temporarily affected - Aus 258**

**664(T)/2020 AUSTRALIA - QUEENSLAND - Hook Island - Light beacon relit**

*Former Notice* - 718(T)/2019 is cancelled  
Maritime Safety Queensland

Cancel this notice on receipt.

**Chart formerly affected - Aus 252**

**665(T)/2020 AUSTRALIA - QUEENSLAND - Moreton Bay - Coochiemudlo Island - Light beacon unlit**

Maritime Safety Queensland Notice 238(T)/2020

The special light beacon, *Fl.Y.2-5s* (27° 33'.38 S 153° 19'.54 E), is unlit.

**Chart temporarily affected - Aus 236**

**666(T)/2020 AUSTRALIA - QUEENSLAND - Moreton Bay - Bramble Bay - Pine River - Light beacon unlit**

Maritime Safety Queensland Notice 280(T)/2020

The light beacon, *Fl.G.3s* (27° 16'.58 S 153° 04'.31 E), is unlit.

**Chart temporarily affected - Aus 236**

**667(T)/2020 AUSTRALIA - QUEENSLAND - One Tree Island - Scientific instrument recovered**

*Former Notice* - 874(T)/2017 is cancelled  
Australian Institute of Marine Science

Cancel this notice on receipt.

**Chart formerly affected - Aus 819**

**668(T)/2020 PAPUA NEW GUINEA - Dauan Island - Light altered**

HMAS *Mermaid*

The light, *Fl.R.6s* (9° 25'.38 S 142° 32'.07 E), has been temporarily altered to *F.R.*

**Chart temporarily affected - Aus 841**

**669(T)/2020 PAPUA NEW GUINEA - Huon Gulf - Fish aggregating devices**

National Maritime Safety Authority PNG Coastal Navigation Warning 8/2018

23 fish aggregating devices exist in an area bounded by the following positions:

7° 00'.0 S 147° 40'.0 E

7° 55'.0 S 147° 40'.0 E

7° 55'.0 S 148° 50'.0 E

7° 00'.0 S 148° 50'.0 E.

Mariners are advised to navigate with caution.

**Chart temporarily affected - Aus 521 - Aus 522 - Aus 523 - Aus 4620 (INT 620) - Aus 4621 (INT 621) - Aus 4622 (INT 622) - PNG 386**

**670(T)/2020 PAPUA NEW GUINEA - Huon Gulf - Fish aggregating devices**

*Former Notice* - 790(T)/2018 is cancelled  
National Maritime Safety Authority PNG Coastal Navigation Warning 8/2018

Cancel this notice on receipt.

**Chart formerly affected - Aus 386 - Aus 521 - Aus 522 - Aus 523 - Aus 4620 (INT 620) - Aus 4621 (INT 621) - Aus 4622 (INT 622)**

**671(T)/2020 PAPUA NEW GUINEA - Ningau Island - Shoaling charted**

*Former Notice* - 570(P)/2020 is cancelled  
Australian Hydrographic Office

Cancel this notice on receipt.

**Chart formerly affected - Aus 386**

**672(T)/2020 AUSTRALIA - NORTHERN TERRITORY - Darwin to Sahul Banks - Survey operations**

Guardian Geomatics

MV *Offshore Guardian* with a towed array up to 300m is conducting survey operations between the following positions:

12° 35'.0 S 130° 56'.0 E  
12° 36'.0 S 130° 54'.0 E  
12° 34'.5 S 130° 51'.5 E  
12° 26'.5 S 130° 47'.0 E  
12° 23'.5 S 130° 44'.0 E  
12° 20'.0 S 130° 39'.0 E  
12° 15'.0 S 130° 22'.5 E  
12° 09'.5 S 129° 58'.0 E  
12° 04'.0 S 129° 25'.0 E  
12° 01'.5 S 128° 27'.5 E  
12° 03'.0 S 127° 23'.5 E  
12° 07'.0 S 126° 56'.0 E  
12° 13'.5 S 126° 36'.5 E  
12° 01'.0 S 124° 32'.0 E.

Mariners are advised to navigate with caution in the area.

**Chart temporarily affected - Aus 24 - Aus 25 - Aus 26 - Aus 27 - Aus 29 - Aus 309 - Aus 314 - Aus 315 - Aus 316 - Aus 319 - Aus 722 - Aus 4721 (INT 721) - Aus 4722 (INT 722)**

**673(T)/2020 AUSTRALIA - WESTERN AUSTRALIA - Barrow Island - Town Point - Light buoy unlit**

Chevron Australia Notice 5/2020

The port lateral light buoy, *Fl.R.3s* (20° 47'.86 S 115° 29'.38 E), is unlit.

**Chart temporarily affected - Aus 65**

**674(T)/2020 AUSTRALIA - WESTERN AUSTRALIA - Barrow Island - Light buoy off station**

*Former Notice* - 168(T)/2020 is cancelled  
Chevron Australia Notice 2/2020

The special light buoy, *Fl(5)Y.20s* (20° 49'.47 S 115° 30'.85 E), is off station.

**Chart temporarily affected - Aus 65**

**675(T)/2020 AUSTRALIA - WESTERN AUSTRALIA - Breaksea Island - Light unreliable**

*Former Notice* - 110(T)/2020 is cancelled  
Australian Maritime Safety Authority Auscoast Warning 261/2020, 263/2020

The light, *Fl(2)6s 119m 13M & Oc.R.1.5s 119m 15M* (35° 03'.87 S 118° 03'.46 E), is unreliable.

**Chart temporarily affected - Aus 110 - Aus 118 - Aus 336 - Aus 337**

**676(T)/2020 AUSTRALIA - WESTERN AUSTRALIA - Montebello Islands - Drill rig northwestwards**

Australian Maritime Safety Authority

Drill rig *Valaris DPS-1* is conducting drilling operations in position 19° 52'.58 S 115° 09'.01 E.

**Chart temporarily affected - Aus 328 - Aus 4723 (INT 723)**

**677(T)/2020 AUSTRALIA - WESTERN AUSTRALIA - Montebello Islands - Scientific instrument recovered northwards**

Former Notice - 1041(T)/2018 is cancelled  
CSIRO

Cancel this notice on receipt.

**Chart formerly affected - Aus 4723 (INT 723)**

**678(T)/2020 AUSTRALIA - SOUTH AUSTRALIA - Port Adelaide - Ocean Steamers Wharf - Harbour works**  
Department for Infrastructure and Transport SA Notice 21(T)/2020

Works are in progress at berths 18 and 19 (34° 50'.07 S 138° 30'.50 E).

A silt curtains marked by white anchor lights exist 15m to 20m out from the wharf edge.

Mariners are advised to navigate with caution in the area.

**Chart temporarily affected - Aus 137**

**679(T)/2020 AUSTRALIA - SOUTH AUSTRALIA - Rivoli Bay - Scientific instruments recovered**

Former Notice - 734(T)/2019 is cancelled  
Department of Planning, Transport and Infrastructure SA

Cancel this notice on receipt.

**Chart formerly affected - Aus 127**

**680(T)/2020 AUSTRALIA - SOUTH AUSTRALIA - Whyalla - Lights unlit; leading line altered**

OceanXpress Shipping & Logistics

The front leading light, *F.R.25m (F Day)* (33° 00'.75 S 137° 35'.33 E), has been temporarily altered to *F.R.25m*.

The rear leading light, *F.R.56m (vert) (2F Day)* (33° 00'.62 S 137° 35'.11 E), has been temporarily altered to *F.R.56m (vert)*.

The port lateral light beacon, *F.R No14* (33° 01'.08 S 137° 35'.58 E), has been repositioned and therefore the charted leading line of 216.5° is no longer accurate and should not be used for navigation.

Mariners are advised to navigate with caution in the area.

**Chart temporarily affected - Aus 135**

**681(T)/2020 AUSTRALIA - VICTORIA - Port Phillip - Hobsons Bay - Dredging operations**

Parks Victoria Notice 221(T)/2020

Dredging operations are in progress in vicinity of position 37° 51'.45 S 144° 56'.87 E.

A pipeline extends from the dredge to the beach and will be marked every 100m by unlit orange buoys.

All hazards to navigation will be marked by flashing yellow lights and the dredge will monitor VHF Ch 14.

Mariners are advised to navigate with caution in the area.

**Chart temporarily affected - Aus 143 - Aus 154 - Aus 155**

**682(P)/2020 AUSTRALIA - TASMANIA - Franklin Sound - Shoaling**  
EOMAP

Latest survey shows shoaler depths than those charted may exist in an area bounded by the following positions:

40° 20'.41 S 148° 23'.65 E  
40° 13'.57 S 148° 27'.46 E  
40° 10'.81 S 148° 23'.17 E  
40° 11'.66 S 148° 16'.60 E  
40° 14'.42 S 148° 01'.81 E  
40° 23'.48 S 147° 59'.63 E.

Mariners are advised to navigate with caution in the area.

Charts will be updated in due course.

**Chart which will be affected - Aus 179 - Aus 798 - Aus 800**

**683(T)/2020 AUSTRALIA - TASMANIA - Macquarie Harbour - Scientific instrument recovered**

*Former Notice* - 997(T)/2018 is cancelled

Marine and Safety Tasmania Notice M151/2018

Cancel this notice on receipt.

**Chart formerly affected - Aus 177**

**684(T)/2020 AUSTRALIA - TASMANIA - Waubs Bay - Scientific instrument recovered**

*Former Notice* - 1347(T)/2019 is cancelled

Marine and Safety Tasmania

Cancel this notice on receipt.

**Chart formerly affected - Aus 766**

II

**HYDROGRAPHIC REPORTS**

NIL



*To accompany Australian Notice to Mariners 647/2020*

ELECTRONIC NAVIGATIONAL CHART (ENC)

Larger scale ENC content exists in this area. When using electronic navigation systems, certain vessels (e.g. restricted by depth or size) may benefit from the additional level of detail shown in the largest scale ENC product available.

*Note for chart Aus 198*

*To accompany Australian Notice to Mariners 653/2020*

ELECTRONIC NAVIGATIONAL CHART (ENC)

Larger scale ENC content exists in this area. When using electronic navigation systems, certain vessels (e.g. restricted by depth or size) may benefit from the additional level of detail shown in the largest scale ENC product available.

*Note for chart Aus 839*

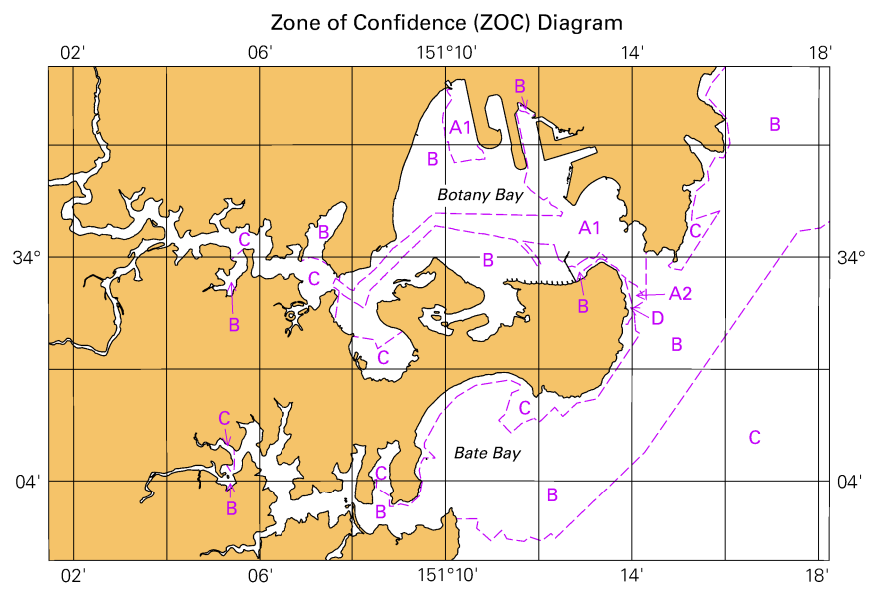
*To accompany Australian Notice to Mariners 653/2020*

ELECTRONIC NAVIGATIONAL CHART (ENC)

Larger scale ENC content exists in this area. When using electronic navigation systems, certain vessels (e.g. restricted by depth or size) may benefit from the additional level of detail shown in the largest scale ENC product available.

*Note for chart Aus 840*

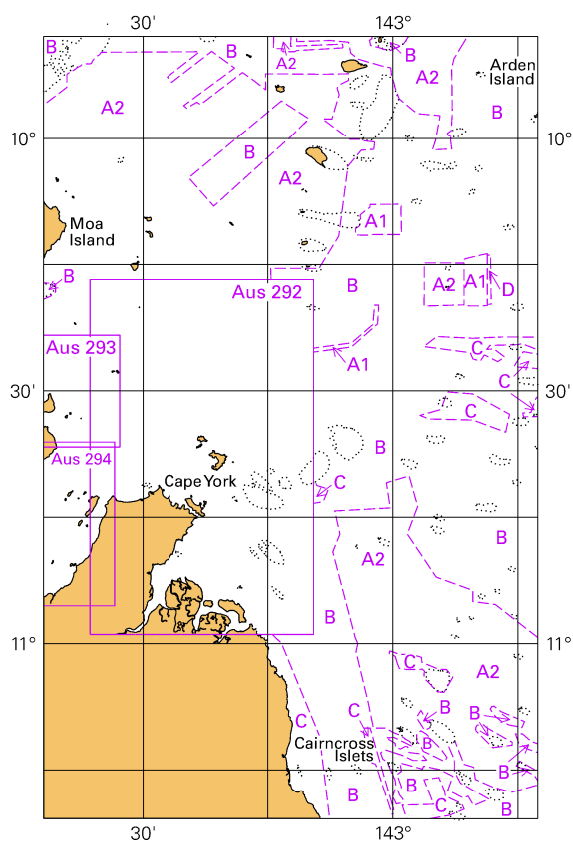
To accompany Australian Notice to Mariners 647/2020



© Commonwealth of Australia 2020

(108.4 x 123.1mm)

To accompany Australian Notice to Mariners 653/2020



© Commonwealth of Australia 2020

Block for chart Aus 839

(65.4 x 103.4mm)