

To accompany Australian Notice to Mariners 950/2020

PILOT BOARDING PLACES

The Northern Pilot Boarding Place is compulsory for all vessels with draft greater than 7.5 metres. The Western pilot boarding ground is for any vessel with draft less than 7.5m. The Inner Pilot Boarding Place will be employed as agreed between individual ship masters and the Kimberley Ports Authority for vessels less than 80m LOA and draft less than 7.5m.

Note for chart Aus 50

To accompany Australian Notice to Mariners 950/2020

PILOT BOARDING PLACES

The Northern Pilot Boarding Place is compulsory for all vessels with draft greater than 7.5 metres. The Western pilot boarding ground is for any vessel with draft less than 7.5m. The Inner Pilot Boarding Place will be employed as agreed between individual ship masters and the Kimberley Ports Authority for vessels less than 80m LOA and draft less than 7.5m.

Note for chart Aus 324

7.11 GREAT BARRIER REEF AND TORRES STRAIT SHIP REPORTING SYSTEM

1. The Torres Strait and GBR are subject to the compulsory REEFVTS Ship Reporting System (see Section 9.3).

7.12 TORRES STRAIT TIDE GAUGES AND CURRENT METERS

1. AMSA has a network of five tide gauges and one tidal stream gauge in Torres Strait. The gauges provide real-time, accurate tidal data to the mariner via VHF Marine Channel 68 (156.425MHz).
2. Mariners are strongly advised to make use of this service as actual tides and streams may differ considerably from those predicted due to meteorological effects and Mean Sea Level (MSL) fluctuations (see Section 4.11.3).
3. All broadcasts are made from the Hammond Island radio transmitter and radar tower on Hammond Hill (152m, located 0.5 miles SSE of Turtle Head Lighthouse). The nominal range is 24 miles. Where line of sight to Hammond Hill is obscured reception may be lost.
4. The five transmitting tide gauges and one transmitting current meter are at the following locations:

Name	Station Identifier	Position (World Geodetics System (WGS 84))	Hours of Operation
Booby Island (tidal height)	Booby Island tide	10° 36' 09" S 141° 54' 36" E	H 24
Goods Island (tidal height)	Goods Island tide	10° 33' 53" S 142° 08' 44" E	H 24
Turtle Head (tidal height) (Hammond Island)	Turtle Head tide	10° 31' 14" S 142° 12' 47" E	H 24
Nardana Patches (tidal height) Nardana Patches (tidal stream)	Nardana tide Nardana stream	10° 30' 17" S 142° 14' 38" E	H 24
Ince Point (Wednesday Island)	Ince Point tide	10° 30' 51" S 142° 18' 17" E	H 24

5. The tidal data is broadcast in the sequence listed in the table above.
6. For each tide station, the broadcast includes:
 - the station identifier, and
 - the height of tide to two decimal place.
7. For the Nardana tidal stream station, the broadcast includes:
 - the station identifier, and
 - the direction and velocity of the tidal stream to one decimal place.
8. Following the Ince Point tidal data transmission, there is a three-second interval of no radio transmission.
9. The broadcast is repeated on a loop, recommencing with Booby Island, then all others in the same sequence. Tidal data is updated every two minutes.
10. If no data is available from a tidal station, the message 'no data available' will be broadcast after the respective station identifier.
11. For more information refer to the Australian National Tide Tables (ANTT) (AHP11).

With reference to Australian Maritime Safety Authority (AMSA) Marine notice 03/2020 and in accordance with Australian Hydrographic Office (AHO) NtM 941/2020 Section 7.5 - Australian Maritime Safety Authority's Differential Global Positioning System Service has been deleted. The service was shutdown on 1 July 2020.

Section 7.5

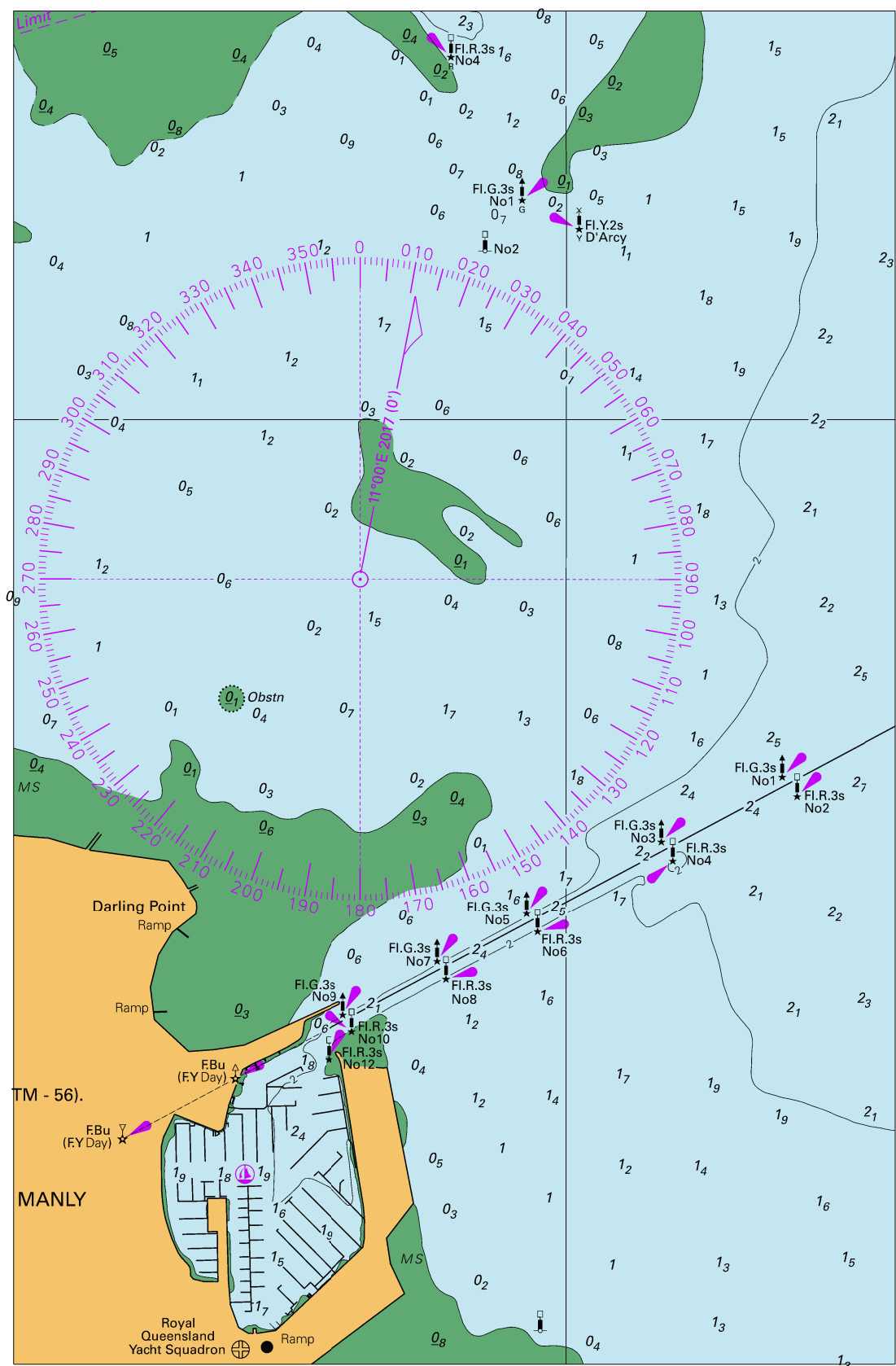
Broome, WA (18° 00'S, 122° 13'E)	
UN/LOCODE: AU BME	
Paper charts:	Aus 50, 324
AusENC cells:	AU5050P0, AU418122, AU419122
Security Regulated Port:	Yes MSIC & Port Access Card required
Port Authority:	Kimberley Port Authority
Website:	www.kimberleyports.wa.gov.au
Email:	info@kimberleyports.wa.gov.au
Telephone:	+61 8 9194 3100
Pilot / Operations	
Telephone:	+61 8 9194 3100 +61 417 173 679
Email:	operations@kimberleyports.wa.gov.au
Pilotage:	Compulsory ≥ 35m LOA
Pilot Boarding Grounds:	Northern 17° 51.4'S, 122° 10.0'E > 7.5m Draft Western 17° 58.04'S, 122° 05.04'E < 7.5m Draft Inner 17° 59.25'S, 122° 09.9'E
Communication:	"Port of Broome"
Call up, emergencies:	VHF Channel 16 & 14
Port / Pilots / Tugs:	VHF Channel 14 / 12 & 06
Notice of ETA:	7 days
For more information:	www.kimberleyports.wa.gov.au

238

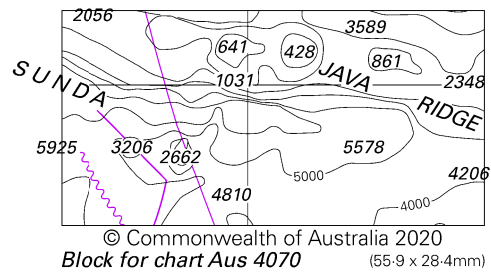
Bayu Undan (Liberdade)	
Timor Sea (11° 02' 58S, 126 °37 6'E)	
Paper chart:	Aus 312
AusENC cells:	AU311126, AU312126, AU220120
Security Regulated Offshore Facility:	Yes
Operator:	Santos Limited
Website:	www.santos.com.au
Telephone:	+61 8 6363 2115
FPSO:	Liberdade
Call:	VKD935
Telephone:	+61 8 6363 1001
Email:	bufsooim@santos.com
Pilot Boarding Ground:	Pilot will embark 2 miles NW of the FPSO
Pilotage:	Compulsory
Communication	
Call up, emergencies:	VHF Channel 16
Pilots / Operator:	VHF Channel 15
Notice of ETA:	72 hours with confirmation at 48, 24 and 12 hours before arrival

248

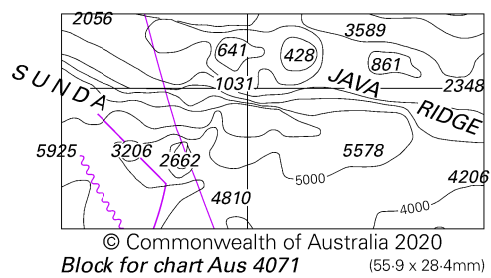
Carriage Requirements - NSCV Part C, Section 7C						
Operational Area and vessel length (Note 1)	All areas vessels 35 metres and over	Area A vessels 24 metres and over	Area A vessels under 24 metres	Area B vessels under 35 metres	Area C vessels under 35 metres	Areas D and E vessels under 35 metres
Electronic Chart Display and Information System (ECDIS) or Electronic Chart System (ECS) (using official ENC) or Paper Nautical Chart (PNC) (Note 2, 3)	Comply with AMSA Marine Orders Part 27	Comply with AMSA Marine Orders Part 27	ECDIS or ECS or PNC required in accordance with (iaw) NSCV	ECDIS or ECS or PNC required iaw NSCV	ECDIS or ECS or PNC required iaw NSCV	ECDIS or ECS or PNC required for vessels 12 metres and over (Note 3)
Nautical Publications (NP)	Comply with AMSA Marine Orders Part 27	Comply with AMSA Marine Orders Part 27	NPs required iaw NSCV	NPs required iaw NSCV	NPs required iaw NSCV	NPs required iaw NSCV



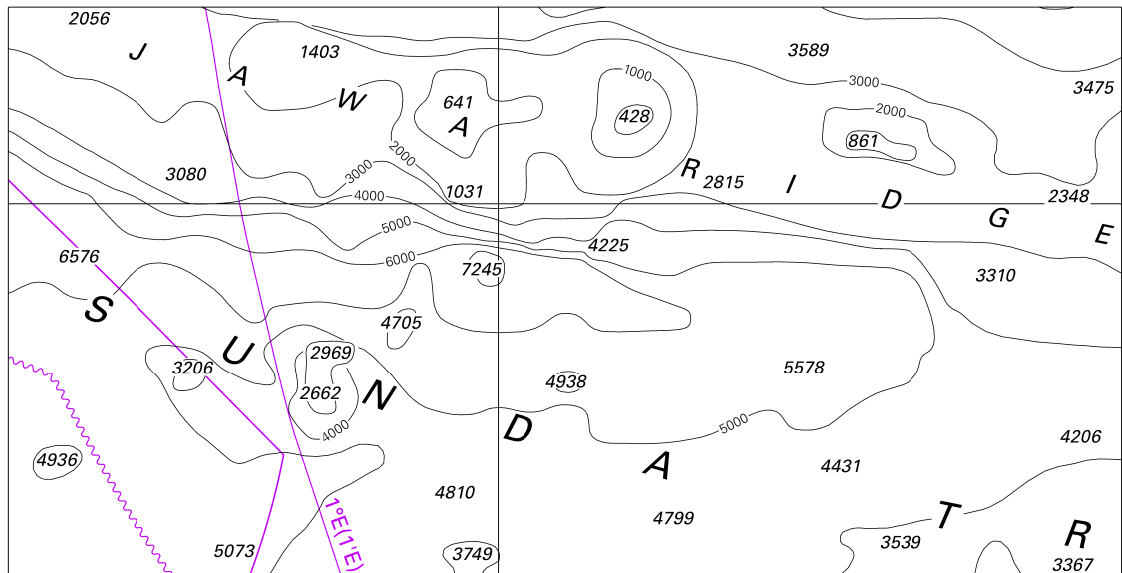
To accompany Australian Notice to Mariners 949/2020



To accompany Australian Notice to Mariners 949/2020



To accompany Australian Notice to Mariners 949/2020

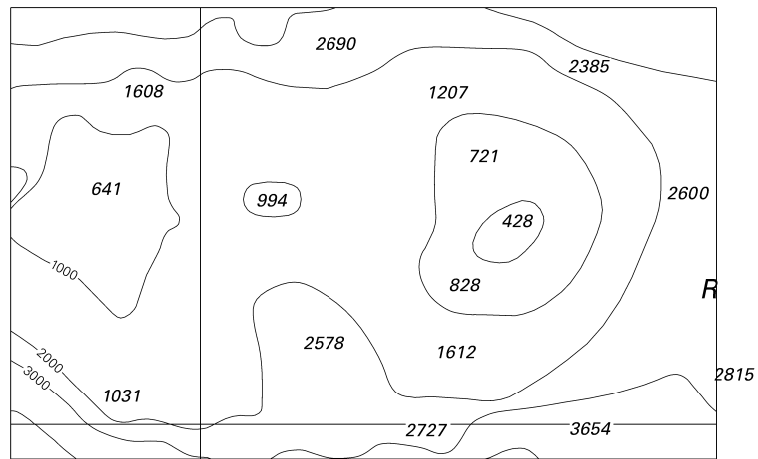


Block for chart Aus 4708

© Commonwealth of Australia 2020

(147.3 x 74.9mm)

To accompany Australian Notice to Mariners 949/2020

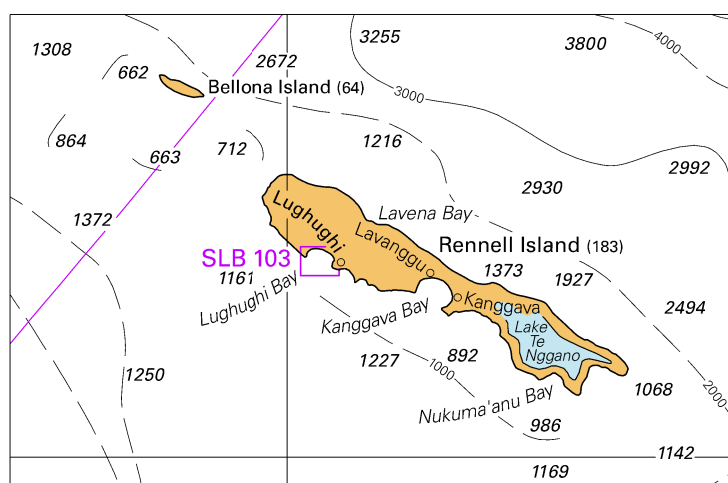


© Commonwealth of Australia 2020

Block for chart Aus 4723

(93.4 x 59.7mm)

To accompany Australian Notice to Mariners 956/2020



© Commonwealth of Australia 2020

Block for chart Aus 4634

(96.1 x 62.2mm)