

AUSTRALIA, QUEENSLAND - TWIN ISLAND

LAT 10° 28' S LONG 142° 26' E

TIME ZONE -1000

TIMES AND HEIGHTS OF HIGH AND LOW WATERS

YEAR 2021

JANUARY					FEBRUARY					MARCH					APRIL								
	Time	m		Time	m		Time	m		Time	m		Time	m		Time	m		Time	m			
1 FR	0042 0456 1306 2058	1.7 0.7 3.1 1.2	16 SA	0200 0539 1422 2204	1.7 0.9 3.1 1.0	1 MO	0203 0605 1421 2204	1.9 0.9 3.0 1.2	16 TU	0158 0600 1301 2204	1.8 1.1 2.5	1 MO	0111 0704 1325 2028	2.5 0.8 3.3 0.9	16 TU	0110 0536 1230 1825	2.4 1.1 2.7 1.1	1 TH	0218 0909 1407 1825	2.8 1.5 2.2 1.2	16 FR	0057 0609 1039 1728	2.6 1.8 2.2 0.9
2 SA	0120 0521 1344 2203	1.6 0.7 3.0 1.2	17 SU	0239 0553 1451 2310	1.5 1.0 2.8 1.2	2 TU	0251 0624 1458 2336	1.8 1.2 2.7 1.3	17 WE	0600 1207 1850 2320	1.3 2.4 1.4 1.7	2 TU	0151 0615 1358 2104	2.4 1.0 3.0 1.1	17 WE	0118 0553 1200 1810	2.3 1.3 2.5 1.1	2 FR	0315 1825	2.6 1.3	17 SA	0033 0610 1016 1725	2.6 1.9 2.2 0.8
3 SU	0207 0546 1435 2343	1.5 0.9 2.8 1.2	18 MO	1508	2.5	3 WE	0357 0621 1538	1.6 1.5 2.3	18 TH	0522 1109 1826 2303	1.5 2.4 1.3 1.8	3 WE	0234 0630 1427 2145	2.3 1.4 2.5 1.4	18 TH	0104 0602 1123 1803	2.2 1.5 2.4 1.1	3 SA	0525 1525 2222	2.5 1.0 2.0	18 SU	0021 0558 0844 1713	2.5 2.1 2.2 0.9
4 MO	0312 0601 1534	1.3 1.1 2.7	19 TU	0202 1242	1.2 2.2	4 TH	0131 1015 1447 1851	1.2 2.2 1.8 1.9	19 FR	0338 1044 1749 2301	1.5 2.5 1.2 1.9	4 TH	0331 0638 1417 1915	2.1 1.8 2.0 1.5	19 FR	0031 0555 1048 1752	2.2 1.7 2.4 1.0	4 SU	0116 0847 1550 2226	1.8 2.8 0.6 2.2	19 MO	0843 1621 2328	2.4 0.9 2.3
5 TU	0123 1643	1.0 2.5	20 WE	0251 1106	1.1 2.4	5 FR	0228 1004 1608 2105	1.1 2.6 1.4 1.9	20 SA	0339 1023 1727 2302	1.4 2.7 1.0 1.9	5 FR	0919 1608 2218	2.4 1.4 1.9	20 SA	1008 1731 2337	2.4 0.9 2.2	5 MO	0243 0909 1616 2227	1.6 3.1 0.4 2.3	20 TU	0315 0842 1611 2304	2.0 2.6 0.8 2.2
6 WE	0209 1040 1356 1853	0.9 2.1 1.9 2.3	21 TH	0317 1056 1719 2139	1.0 2.5 1.6 1.8	6 SA	0310 1009 1644 2148	0.9 2.9 1.0 2.0	21 SU	0342 1021 1729 2305	1.4 2.9 0.9 1.9	6 SA	0208 0934 1620 2227	1.5 2.8 0.9 2.0	21 SU	0347 0941 1659 2319	1.9 2.6 0.8 2.1	6 TU	0327 0932 1641 2230	1.4 3.2 0.3 2.4	21 WE	0306 0846 1617 2237	1.8 2.8 0.7 2.1
7 TH	0247 1008 1509 2014	0.7 2.4 1.6 2.3	22 FR	0333 1044 1727 2207	1.0 2.7 1.3 1.8	7 SU	0347 1027 1717 2223	0.8 3.2 0.7 2.1	22 MO	0345 1028 1741 2258	1.3 3.0 0.8 1.9	7 SU	0303 0950 1642 2230	1.3 3.1 0.6 2.1	22 MO	0340 0941 1654 2310	1.7 2.8 0.7 2.1	7 WE	0402 0957 1706 2242	1.1 3.3 0.3 2.5	22 TH	0321 0907 1630 2213	1.6 3.0 0.7 2.3
8 FR	0321 1007 1606 2109	0.6 2.7 1.3 2.2	23 SA	0341 1044 1745 2225	1.0 2.8 1.2 1.8	8 MO	0421 1051 1751 2256	0.7 3.4 0.5 2.1	23 TU	0356 1037 1753 2251	1.1 3.1 0.8 1.9	8 MO	0343 1008 1707 2238	1.1 3.3 0.4 2.2	23 TU	0338 0945 1702 2255	1.6 2.9 0.7 2.1	8 TH	0433 1023 1730 2301	1.0 3.3 0.4 2.6	23 FR	0352 0935 1651 2227	1.3 3.2 0.6 2.5
9 SA	0354 1028 1658 2157	0.5 3.0 1.1 2.2	24 SU	0348 1053 1805 2236	0.9 3.0 1.1 1.8	9 TU	0454 1120 1825 2328	0.6 3.6 0.4 2.2	24 WE	0418 1051 1805 2302	1.0 3.3 0.8 2.1	9 TU	0416 1031 1734 2256	0.9 3.4 0.3 2.3	24 WE	0347 0954 1713 2237	1.4 3.1 0.7 2.1	9 FR	0502 1049 1752 2323	0.9 3.3 0.6 2.6	24 SA	0429 1009 1717 2254	1.1 3.3 0.6 2.7
10 SU	0427 1056 1746 2242	0.5 3.3 0.8 2.2	25 MO	0400 1104 1821 2248	0.9 3.1 1.0 1.8	10 WE	0527 1150 1857 2359	0.5 3.6 0.4 2.2	25 TH	0447 1113 1824 2327	0.8 3.4 0.8 2.2	10 WE	0449 1057 1802 2319	0.8 3.5 0.3 2.4	25 TH	0411 1014 1728 2247	1.1 3.3 0.7 2.3	10 SA	0529 1113 1809 2347	0.9 3.2 0.7 2.7	25 SU	0510 1046 1747 2327	0.9 3.3 0.5 2.9
11 MO	0458 1127 1831 2324	0.4 3.5 0.7 2.1	26 TU	0418 1117 1836 2308	0.8 3.2 1.0 1.9	11 TH	0557 1220 1928	0.5 3.6 0.5	26 FR	0522 1143 1850 2358	0.6 3.5 0.7 2.4	11 TH	0518 1124 1828 2343	0.6 3.5 0.5 2.4	26 FR	0442 1042 1751 2311	0.9 3.4 0.6 2.5	11 SU	0554 1134 1824	1.0 3.1 0.8	26 MO	0552 1124 1817	0.9 3.3 0.5
12 TU	0530 1201 1913	0.4 3.6 0.6	27 WE	0443 1136 1852 2335	0.7 3.3 1.0 2.0	12 FR	0029 0624 1248 1957	2.2 0.5 3.4 0.7	27 SA	0558 1216 1921	0.6 3.5 0.7	12 FR	0546 1150 1852	0.6 3.4 0.6	27 SA	0519 1115 1819 2343	0.8 3.5 0.6 2.7	12 MO	0010 0613 1148 1831	2.7 1.1 2.9 0.8	27 TU	0003 0636 1203 1847	3.1 0.9 3.1 0.6
13 WE	0005 0601 1236 1954	2.0 0.5 3.6 0.6	28 TH	0511 1202 1916	0.6 3.3 0.9	13 SA	0059 0642 1313 2024	2.1 0.7 3.3 0.9	28 SU	0034 0633 1251 1954	2.4 0.6 3.5 0.8	13 SA	0009 0610 1213 1913	2.5 0.7 3.3 0.8	28 SU	0558 1151 1850	0.7 3.5 0.6	13 TU	0030 0614 1155 1800	2.8 1.3 2.7 0.9	28 WE	0040 0722 1242 1913	3.3 1.0 2.8 0.7
14 TH	0043 0631 1312 2034	2.0 0.6 3.5 0.7	29 FR	0008 0534 1234 1949	2.0 0.6 3.4 0.9	14 SU	0125 0538 1330 2050	2.0 0.9 3.1 1.1	15 MO	0146 0547 1330 2105	1.9 1.0 2.8 1.3	14 SU	0033 0627 1230 1929	2.5 0.8 3.2 0.9	29 MO	0019 0637 1226 1921	2.8 0.7 3.4 0.6	14 WE	0045 0541 1153 1732	2.8 1.4 2.5 0.9	29 TH	0121 0816 1322 1739	3.3 1.2 2.3 0.9
15 FR	0122 0648 1348 2116	1.8 0.7 3.3 0.9	30 SA	0044 0522 1309 2026	2.1 0.6 3.3 0.9	15 MO			15 MO			15 MO	0054 0527 1237 1934	2.4 1.0 3.0 1.1	30 TU	0057 0718 1302 1950	2.9 0.9 3.2 0.8	15 TH	0056 0558 1113 1731	2.7 1.6 2.3 0.9	30 FR	0206 0933 1410 1755	3.2 1.4 1.9 1.1
			31 SU	0122 0541 1344 2109	2.0 0.7 3.2 1.0										31 WE	0135 0804 1336 2013	2.9 1.2 2.7 1.0						

* CORRECTION TO CHART DATUM INCLUDED IN TABLE I
SEE CHAPTER 5

58100

AUSTRALIA, QUEENSLAND - TWIN ISLAND

LAT 10° 28' S LONG 142° 26' E

TIME ZONE -1000

TIMES AND HEIGHTS OF HIGH AND LOW WATERS

YEAR 2021

MAY					JUNE					JULY					AUGUST								
	Time	m		Time	m		Time	m		Time	m		Time	m		Time	m		Time	m			
1 SA	0307 1239 1544 1802	3.0 1.3 1.4 1.2	16 SU	0045 1715	2.8 0.9	1 TU	0529 1413 2146	2.9 0.7 2.0	16 WE	0303 1358	2.6 1.2	1 TH	0532 1414 2218	2.5 0.9 2.1	16 FR	0340 1319	2.6 1.2	1 SU	0458 0927 1500 2220	1.6 1.8 1.2 2.6	16 MO	0336 0832 1427 2135	1.5 1.8 1.2 2.8
2 SU	0441 1428	2.8 0.9	17 MO	0046 1717	2.6 1.0	2 WE	0040 0648 1458 2157	1.8 2.8 0.7 2.2	17 TH	0432 1417 2351	2.5 1.1 2.0	2 FR	0203 0657 1455 2221	1.9 2.3 0.9 2.3	17 SA	0446 1408 2203	2.3 1.1 2.2	2 MO	0507 0959 1514 2221	1.3 1.8 1.2 2.8	17 TU	0416 0922 1508 2150	1.1 1.9 1.0 3.1
3 MO	0640 1509 2205	2.8 0.6 2.2	18 TU	0109 1531	2.5 1.0	3 TH	0222 0751 1531 2202	1.7 2.7 0.6 2.3	18 FR	0042 0602 1443 2209	2.0 2.5 0.9 2.0	3 SA	0326 0814 1524 2221	1.7 2.2 0.9 2.5	18 SU	0231 0723 1446 2140	1.8 2.1 0.9 2.5	3 TU	0527 1022 1522 2232	1.1 1.8 1.1 3.0	18 WE	0450 0955 1546 2215	0.8 2.0 0.9 3.4
4 TU	0154 0802 1540 2209	1.8 2.9 0.5 2.3	19 WE	0640 1519 2310	2.5 0.9 2.1	4 FR	0319 0837 1557 2213	1.6 2.6 0.7 2.5	19 SA	0223 0737 1513 2138	1.8 2.6 0.8 2.3	4 SU	0421 0907 1541 2232	1.6 2.1 0.9 2.7	19 MO	0336 0836 1521 2155	1.5 2.1 0.8 2.9	4 WE	0550 1036 1533 2247	1.0 1.8 1.0 3.1	19 TH	0524 1028 1623 2244	0.5 2.2 0.7 3.6
5 WE	0258 0843 1607 2211	1.5 3.0 0.4 2.4	20 TH	0205 0739 1528 2216	2.0 2.7 0.8 2.1	5 SA	0402 0914 1617 2233	1.5 2.5 0.7 2.7	20 SU	0321 0834 1544 2157	1.6 2.6 0.7 2.7	5 MO	0506 0945 1551 2249	1.4 2.0 0.9 2.9	20 TU	0431 0928 1554 2223	1.2 2.2 0.7 3.2	5 TH	0610 1044 1550 2300	1.0 1.8 1.0 3.1	20 FR	0558 1101 1701 2317	0.4 2.3 0.5 3.6
6 TH	0339 0916 1632 2223	1.4 3.0 0.5 2.5	21 FR	0247 0819 1549 2150	1.7 2.8 0.7 2.3	6 SU	0441 0946 1630 2256	1.4 2.4 0.8 2.8	21 MO	0412 0923 1616 2227	1.3 2.5 0.6 3.0	6 TU	0545 1013 1557 2308	1.3 1.9 0.9 3.0	21 WE	0520 1016 1630 2255	0.9 2.2 0.6 3.5	6 FR	0627 1057 1613 2316	1.0 1.9 0.8 3.2	21 SA	0631 1136 1738 2352	0.4 2.3 0.5 3.6
7 FR	0414 0946 1654 2243	1.3 3.0 0.6 2.6	22 SA	0331 0859 1616 2208	1.5 2.9 0.6 2.6	7 MO	0516 1013 1639 2319	1.4 2.3 0.8 2.9	22 TU	0503 1010 1649 2301	1.1 2.5 0.5 3.3	7 WE	0617 1036 1604 2324	1.3 1.9 0.8 3.1	22 TH	0605 1100 1707 2332	0.7 2.2 0.5 3.6	7 SA	0639 1118 1641 2339	1.0 2.0 0.7 3.2	22 SU	0703 1209 1813	0.4 2.3 0.5
8 SA	0446 1013 1712 2306	1.2 2.9 0.7 2.7	23 SU	0416 0940 1645 2237	1.3 3.0 0.5 2.9	8 TU	0548 1037 1641 2338	1.4 2.2 0.8 3.0	23 WE	0554 1056 1722 2338	0.9 2.4 0.5 3.5	8 TH	0643 1058 1615 2337	1.2 1.9 0.8 3.1	23 FR	0647 1143 1746	0.5 2.2 0.5	8 SU	0655 1148 1705	1.0 2.1 0.7	23 MO	0026 0734 1243 1844	3.6 0.6 2.3 0.6
9 SU	0516 1038 1725 2330	1.2 2.8 0.7 2.8	24 MO	0501 1022 1716 2312	1.1 2.9 0.5 3.1	9 WE	0617 1101 1630 2353	1.4 2.1 0.7 3.1	24 TH	0645 1143 1756	0.8 2.3 0.5	9 FR	0700 1125 1631 2355	1.2 1.9 0.7 3.2	24 SA	0010 0728 1225 1824	3.7 0.5 2.2 0.5	9 MO	0009 0721 1221 1713	3.3 1.0 2.1 0.7	24 TU	0057 0803 1316 1906	3.4 0.8 2.2 0.8
10 MO	0543 1058 1734 2352	1.3 2.7 0.8 2.9	25 TU	0548 1105 1747 2348	1.0 3.0 0.5 3.4	10 TH	0640 1128 1633	1.4 2.0 0.7	25 FR	0019 0735 1231 1831	3.6 0.7 2.1 0.6	10 SA	0716 1156 1644	1.2 1.9 0.7	25 SU	0050 0807 1306 1901	3.6 0.6 2.1 0.6	10 TU	0042 0754 1259 1731	3.3 1.0 2.1 0.7	25 WE	0123 0832 1347 1746	3.1 1.0 2.1 1.1
11 TU	0607 1116 1728	1.4 2.5 0.8	26 WE	0636 1148 1817	0.9 2.6 0.6	11 FR	0008 0706 1157 1642	3.1 1.4 1.9 0.8	26 SA	0102 0827 1318 1907	3.6 0.7 2.0 0.8	11 SU	0019 0742 1230 1659	3.1 1.2 1.9 0.7	26 MO	0130 0846 1346 1931	3.5 0.7 2.0 0.8	11 WE	0116 0830 1339 1756	3.2 1.1 2.1 0.9	26 TH	0138 0857 1415 1800	2.8 1.2 2.0 1.3
12 WE	0010 0628 1134 1656	3.0 1.4 2.4 0.7	27 TH	0027 0728 1232 1845	3.5 0.9 2.4 0.7	12 SA	0026 0739 1225 1652	3.1 1.5 1.8 0.8	27 SU	0149 0919 1410 1759	3.5 0.8 1.8 1.0	12 MO	0048 0818 1305 1722	3.1 1.2 1.8 0.8	27 TU	0208 0928 1427 1812	3.3 0.9 1.9 1.1	12 TH	0150 0910 1423 1822	3.1 1.2 2.0 1.1	27 FR	0123 0855 1443 1808	2.5 1.4 1.9 1.5
13 TH	0025 0650 1151 1659	3.0 1.5 2.1 0.8	28 FR	0109 0827 1321 1722	3.5 1.0 2.1 0.9	13 SU	0044 0823 1249 1708	3.0 1.5 1.6 0.8	28 MO	0239 1016 1506 1814	3.3 0.9 1.7 1.2	13 TU	0122 0903 1345 1749	3.0 1.3 1.8 0.9	28 WE	0242 1016 1510 1821	3.0 1.1 1.7 1.3	13 FR	0224 1005 1517 1840	2.8 1.3 1.9 1.5	28 SA	0014 0645 1239	2.3 1.4 2.3
14 FR	0039 0720 1045 1702	3.0 1.6 1.9 0.8	29 SA	0158 0938 1419 1743	3.4 1.0 1.7 1.0	14 MO	0104 0728	2.9 0.9	29 TU	0332 1123 1615 1828	3.1 1.0 1.5 1.4	14 WE	0202 1004 1434 1816	2.9 1.3 1.7 1.1	29 TH	0312 1120 1609 1821	2.6 1.2 1.6 1.5	14 SA	0300 1211 2204	2.4 1.4 2.0	29 SU	0616 1058 1442 2215	1.3 1.8 1.6 2.5
15 SA	0047 0801 1008 1707	2.9 1.8 1.9 0.8	30 SU	0258 1105 1537 1802	3.2 1.0 1.5 1.2	15 TU	0139 0747	2.7 1.1	30 WE	0428 1301	2.8 1.0	15 TH	0248 1145 1536 1833	2.8 1.3 1.6 1.3	30 FR	0328 1332 2246	2.3 1.3 2.2	15 SU	0137 0345 1338 2132	1.9 2.0 1.3 2.4	30 MO	0524 1051 1505 2153	1.2 1.8 1.6 2.6
			31 MO	0409 1255	3.0 0.9										31 SA	1431 2235	1.2 2.4				31 TU	0501 1045 1514 2152	1.0 1.9 1.5 2.8

* CORRECTION TO CHART DATUM INCLUDED IN TABLE I
SEE CHAPTER 5

58100

AUSTRALIA, QUEENSLAND - TWIN ISLAND

LAT 10° 28' S LONG 142° 26' E

TIME ZONE -1000

TIMES AND HEIGHTS OF HIGH AND LOW WATERS

YEAR 2021

SEPTEMBER					OCTOBER					NOVEMBER					DECEMBER				
	Time	m		Time	m		Time	m		Time	m		Time	m		Time	m		
1 WE	0507 1047 1515 2201	0.8 1.9 1.4 3.0	16 TH	0438 1010 1542 2154	0.4 2.2 1.0 3.4	1 FR	0441 1037 1521 2129	0.6 2.1 1.4 3.1	16 SA	0439 1016 1606 2154	0.2 2.5 0.9 3.3	1 MO	0427 1011 1606 2144	0.5 2.4 1.2 3.1	16 TU	0454 1054 1707 2222	0.5 2.8 1.2 2.7		
2 TH	0521 1046 1526 2211	0.7 1.9 1.2 3.1	17 FR	0506 1028 1618 2223	0.3 2.3 0.8 3.5	2 SA	0451 1021 1543 2149	0.6 2.1 1.2 3.2	17 SU	0506 1038 1640 2223	0.3 2.6 0.9 3.3	2 TU	0452 1034 1647 2219	0.5 2.6 1.0 3.1	17 WE	0509 1120 1740 2244	0.6 2.9 1.3 2.5		
3 FR	0535 1039 1547 2226	0.8 2.0 1.1 3.2	18 SA	0535 1052 1653 2254	0.3 2.4 0.6 3.5	3 SU	0505 1026 1613 2216	0.7 2.3 1.0 3.3	18 MO	0529 1103 1712 2251	0.4 2.6 0.9 3.1	3 WE	0520 1105 1730 2257	0.5 2.9 1.0 3.0	18 TH	0517 1143 1811 2301	0.6 2.9 1.4 2.3		
4 SA	0548 1044 1616 2247	0.8 2.1 0.9 3.3	19 SU	0603 1120 1726 2323	0.4 2.5 0.6 3.5	4 MO	0525 1048 1650 2247	0.6 2.4 0.9 3.3	19 TU	0550 1130 1743 2314	0.5 2.7 1.0 3.0	4 TH	0550 1140 1815 2336	0.5 3.1 1.0 2.9	19 FR	0456 1202 1838 2317	0.6 3.0 1.5 2.1		
5 SU	0602 1104 1649 2315	0.8 2.2 0.8 3.3	20 MO	0629 1148 1757 2352	0.5 2.5 0.6 3.4	5 TU	0552 1118 1731 2321	0.6 2.6 0.8 3.3	20 WE	0607 1156 1809 2332	0.7 2.7 1.1 2.8	5 FR	0618 1217 1903	0.5 3.2 1.0	20 SA	0432 1214 1903 2335	0.6 3.0 1.5 1.9		
6 MO	0624 1133 1725 2348	0.8 2.3 0.7 3.4	21 TU	0652 1217 1824	0.6 2.5 0.8	6 WE	0621 1153 1812 2357	0.6 2.7 0.8 3.2	21 TH	0616 1219 1831 2340	0.8 2.8 1.3 2.6	6 SA	0017 0643 1257 1958	2.6 0.7 3.3 1.1	21 SU	0443 1226 1931 2215	0.6 3.0 1.6 1.7		
7 TU	0652 1208 1802	0.8 2.4 0.7	22 WE	0015 0713 1245 1839	3.2 0.8 2.5 1.1	7 TH	0651 1231 1855	0.6 2.9 0.9	22 FR	0510 1236 1730 2336	0.8 2.8 1.5 2.3	7 SU	0059 0512 1343 2114	2.2 0.8 3.2 1.2	22 MO	0448 1236 2017 2103	0.7 2.8 1.7 1.7		
8 WE	0021 0724 1245 1834	3.4 0.8 2.5 0.8	23 TH	0029 0727 1308 1724	2.9 1.0 2.4 1.2	8 FR	0033 0719 1311 1944	3.0 0.8 2.9 1.2	23 SA	0510 1247 1750 2251	0.8 2.7 1.7 2.1	8 MO	0150 0531 1445 2333	1.8 0.9 3.1 1.1	23 TU	0447 1231	0.7 2.7		
9 TH	0055 0756 1325 1757	3.3 0.9 2.5 1.0	24 FR	0025 0600 1239 1757	2.6 1.1 2.4 1.2	9 SA	0108 0551 1354 2046	2.7 1.0 2.8 1.4	24 SU	0513 1249 1806 2154	0.8 2.6 1.9 2.0	9 TU	1613	2.9	24 WE	0450 1218	0.8 2.6		
10 FR	0128 0826 1409 1819	3.0 1.0 2.4 1.4	25 SA	0554 1327 1756 2257	1.1 2.2 1.7 2.2	10 SU	0145 0601 1452	2.2 1.1 2.7	25 MO	0507 1220 1804 2121	0.8 2.5 2.0 2.1	10 WE	0135 1758	0.8 2.9	25 TH	0450 1224	0.8 2.5		
11 SA	0200 0852 1502 2141	2.6 1.3 2.3 1.8	26 SU	0548 1236 1748 2209	1.0 2.2 1.9 2.3	11 MO	0607 1636	1.2 2.6	26 TU	0458 1155 1727 2005	0.8 2.5 2.1 2.2	11 TH	0231 0934 1306 1922	0.5 2.1 1.7 3.0	26 FR	0328 1838	0.8 2.4		
12 SU	0224 0657 1648	2.0 1.4 2.2	27 MO	0529 1153 1555 2127	1.0 2.1 2.0 2.4	12 TU	0238 0950 1216 1951	1.0 1.9 1.8 2.8	27 WE	0439 1139 1523 2015	0.8 2.4 2.1 2.4	12 FR	0309 0945 1422 2013	0.3 2.3 1.4 3.0	27 SA	0313 1108 1415 1925	0.8 2.2 2.0 2.5		
13 MO	0340 0954 1306 2052	1.5 1.8 1.6 2.7	28 TU	0501 1122 1516 2109	0.9 2.1 1.9 2.6	13 WE	0313 0952 1352 2025	0.6 2.1 1.6 3.1	28 TH	0358 1108 1502 2019	0.7 2.3 2.0 2.6	13 SA	0340 0952 1512 2051	0.2 2.4 1.3 3.0	28 SU	0318 1039 1441 2002	0.7 2.1 1.8 2.6		
14 TU	0346 1000 1415 2109	1.0 1.9 1.4 3.0	29 WE	0432 1057 1516 2111	0.7 2.1 1.8 2.7	14 TH	0343 0957 1448 2055	0.3 2.3 1.3 3.2	29 FR	0352 1045 1453 2026	0.7 2.2 1.8 2.7	14 SU	0409 1007 1554 2125	0.3 2.6 1.2 2.9	29 MO	0333 1003 1518 2039	0.6 2.2 1.6 2.7		
15 WE	0411 1003 1502 2130	0.6 2.1 1.2 3.2	30 TH	0432 1047 1514 2117	0.7 2.1 1.6 2.9	15 FR	0411 1003 1530 2125	0.2 2.4 1.1 3.3	30 SA	0358 1028 1503 2046	0.6 2.2 1.6 2.9	15 MO	0434 1029 1631 2155	0.4 2.7 1.2 2.8	30 TU	0356 1004 1600 2119	0.5 2.5 1.4 2.7		
									31 SU	0409 1005 1530 2112	0.6 2.2 1.4 3.0					31 FR	0430 1052 1744 2242	0.5 3.3 0.9 2.2	

* CORRECTION TO CHART DATUM INCLUDED IN TABLE I
SEE CHAPTER 5

58100

To accompany Australian Notice to Mariners 904/2020

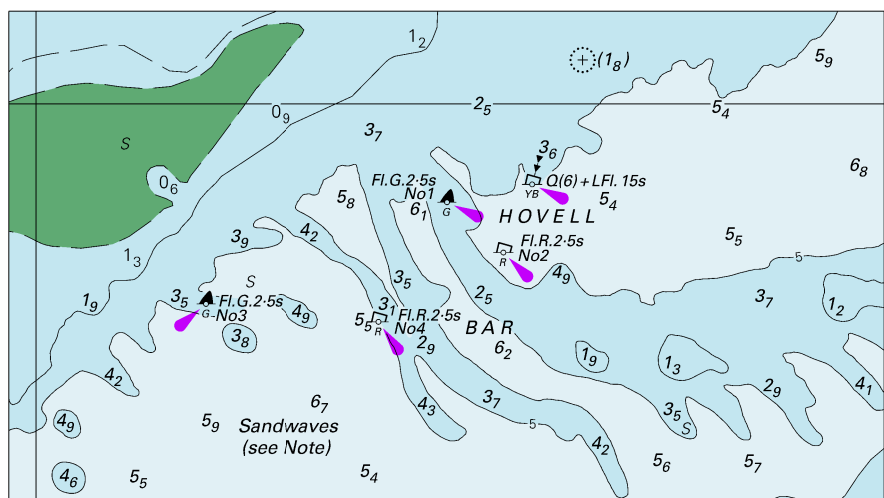
Tidal Levels referred to Datum of Soundings								
Place	Lat S	Long E	Heights in metres above datum					
			HAT	MHHW	MLHW	MSL	MHLW	MLLW
Dregerhafen	6° 39'	147° 53'	1·4	1·2	1·1	0·8	0·5	0·3
Finschhafen	6 33	147 51	1·0	0·9	0·7	0·5	0·2	0·1
Lae	6 45	147 00	1·3	1·2	1·1	0·7	0·4	0·3

Block for chart PNG 523

© Commonwealth of Australia 2020

(137·0 x 39·1mm)

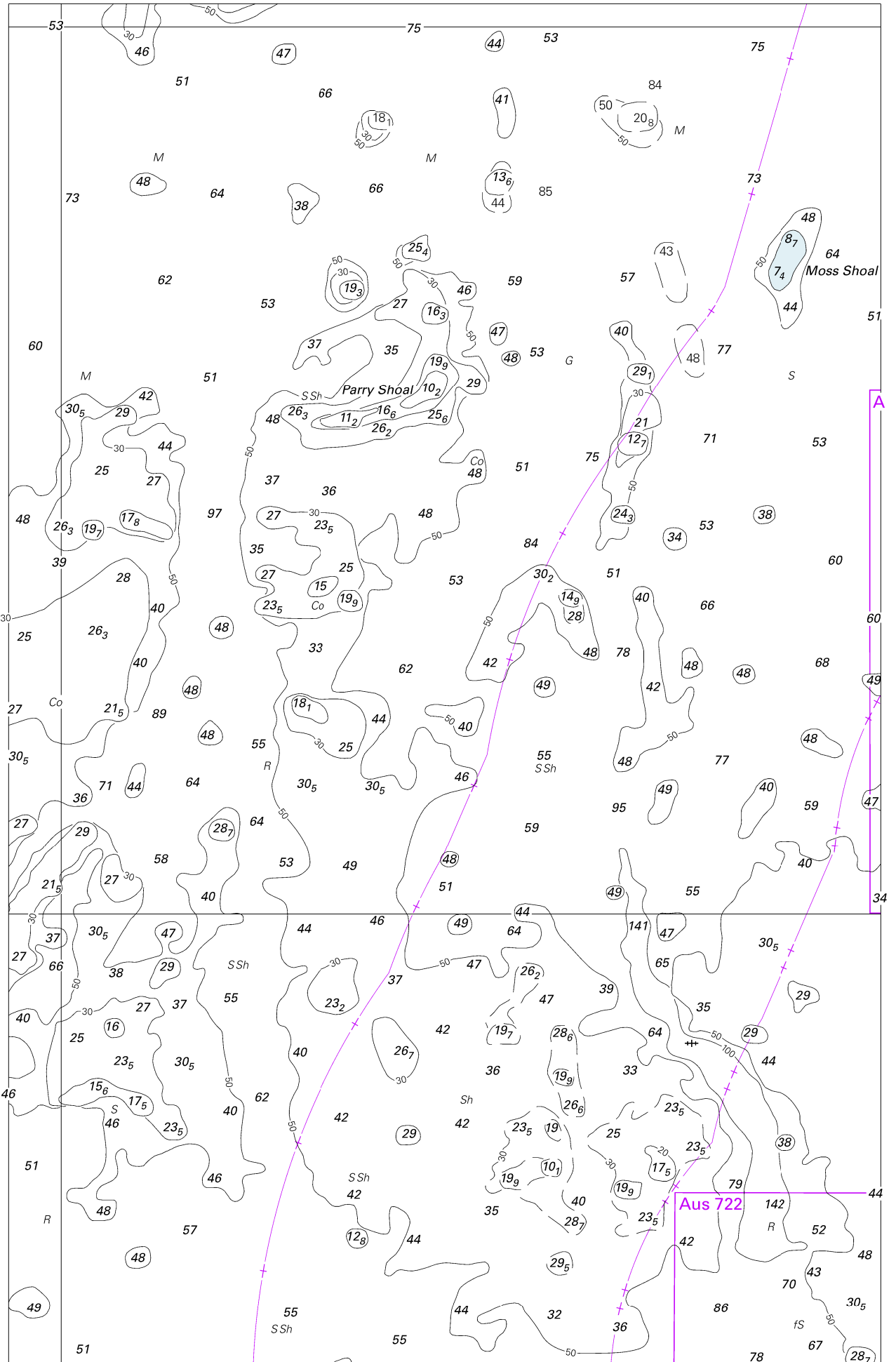
To accompany Australian Notice to Mariners 906/2020



Block for chart Aus 299

© Commonwealth of Australia 2020

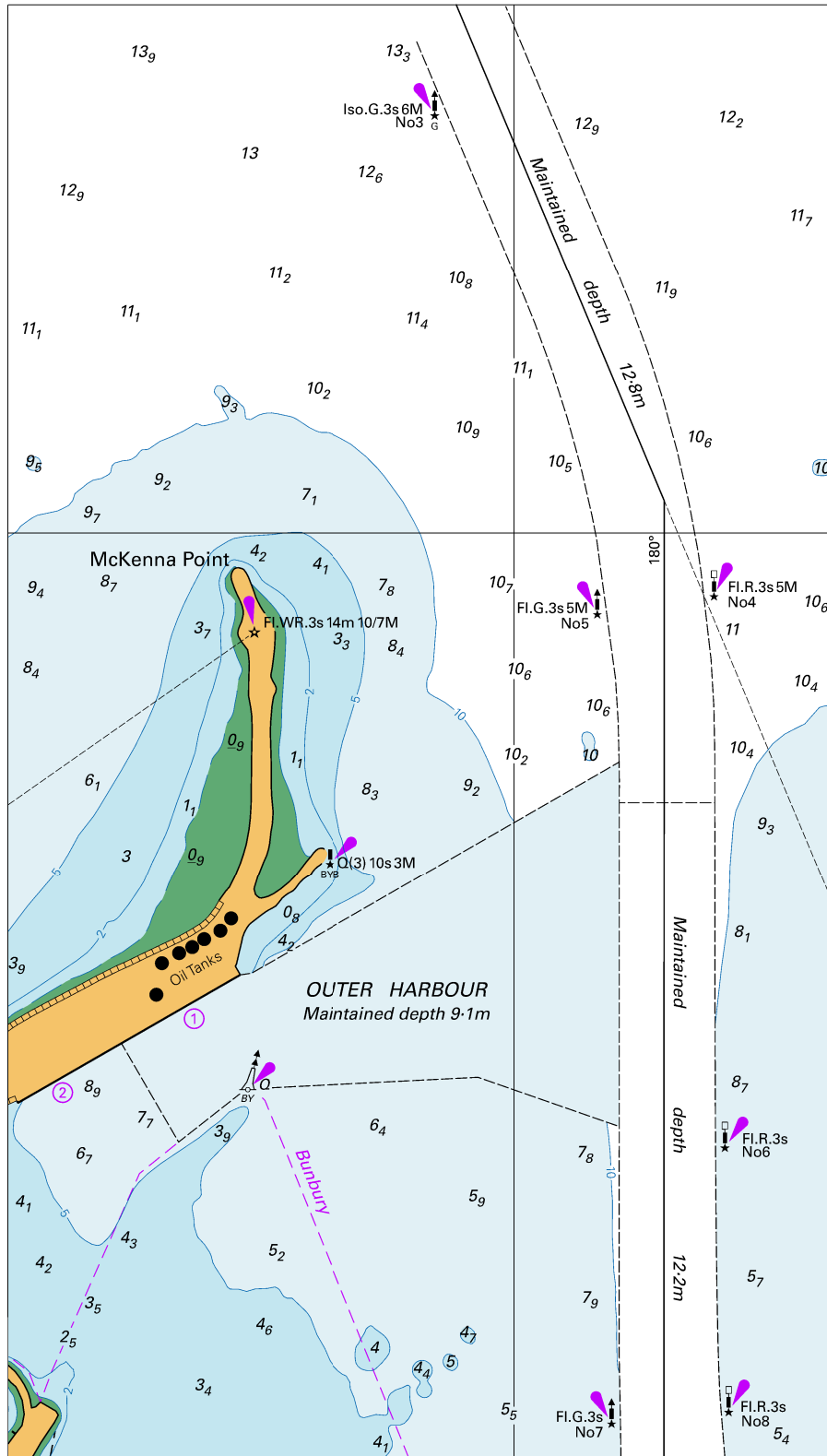
(115.7 x 64.7mm)



The map displays the study area with depth contours in meters (50, 30, 20, 10, 5, 0). Bathymetric features include Moss Shoal, Parry Shoal, and SSh. Station locations are marked with numbers and letters (e.g., 46, 47, 48, 49, 50, 51, 52, 53, 54, 55, 56, 57, 58, 59, 60, 61, 62, 63, 64, 65, 66, 67, 68, 69, 70, 71, 72, 73, 74, 75, 76, 77, 78, 79, 80, 81, 82, 83, 84, 85, 86, 87, 88, 89, 90, 91, 92, 93, 94, 95, 96, 97, 98, 99, 100, 101, 102, 103, 104, 105, 106, 107, 108, 109, 110, 111, 112, 113, 114, 115, 116, 117, 118, 119, 120, 121, 122, 123, 124, 125, 126, 127, 128, 129, 130, 131, 132, 133, 134, 135, 136, 137, 138, 139, 140, 141, 142, 143, 144, 145, 146, 147, 148, 149, 150, 151, 152, 153, 154, 155, 156, 157, 158, 159, 160, 161, 162, 163, 164, 165, 166, 167, 168, 169, 170, 171, 172, 173, 174, 175, 176, 177, 178, 179, 180, 181, 182, 183, 184, 185, 186, 187, 188, 189, 190, 191, 192, 193, 194, 195, 196, 197, 198, 199, 200, 201, 202, 203, 204, 205, 206, 207, 208, 209, 210, 211, 212, 213, 214, 215, 216, 217, 218, 219, 220, 221, 222, 223, 224, 225, 226, 227, 228, 229, 230, 231, 232, 233, 234, 235, 236, 237, 238, 239, 240, 241, 242, 243, 244, 245, 246, 247, 248, 249, 250, 251, 252, 253, 254, 255, 256, 257, 258, 259, 260, 261, 262, 263, 264, 265, 266, 267, 268, 269, 270, 271, 272, 273, 274, 275, 276, 277, 278, 279, 280, 281, 282, 283, 284, 285, 286, 287, 288, 289, 290, 291, 292, 293, 294, 295, 296, 297, 298, 299, 300, 301, 302, 303, 304, 305, 306, 307, 308, 309, 310, 311, 312, 313, 314, 315, 316, 317, 318, 319, 320, 321, 322, 323, 324, 325, 326, 327, 328, 329, 330, 331, 332, 333, 334, 335, 336, 337, 338, 339, 340, 341, 342, 343, 344, 345, 346, 347, 348, 349, 350, 351, 352, 353, 354, 355, 356, 357, 358, 359, 360, 361, 362, 363, 364, 365, 366, 367, 368, 369, 370, 371, 372, 373, 374, 375, 376, 377, 378, 379, 380, 381, 382, 383, 384, 385, 386, 387, 388, 389, 390, 391, 392, 393, 394, 395, 396, 397, 398, 399, 400, 401, 402, 403, 404, 405, 406, 407, 408, 409, 410, 411, 412, 413, 414, 415, 416, 417, 418, 419, 420, 421, 422, 423, 424, 425, 426, 427, 428, 429, 430, 431, 432, 433, 434, 435, 436, 437, 438, 439, 440, 441, 442, 443, 444, 445, 446, 447, 448, 449, 450, 451, 452, 453, 454, 455, 456, 457, 458, 459, 460, 461, 462, 463, 464, 465, 466, 467, 468, 469, 470, 471, 472, 473, 474, 475, 476, 477, 478, 479, 480, 481, 482, 483, 484, 485, 486, 487, 488, 489, 490, 491, 492, 493, 494, 495, 496, 497, 498, 499, 500, 501, 502, 503, 504, 505, 506, 507, 508, 509, 510, 511, 512, 513, 514, 515, 516, 517, 518, 519, 520, 521, 522, 523, 524, 525, 526, 527, 528, 529, 530, 531, 532, 533, 534, 535, 536, 537, 538, 539, 540, 541, 542, 543, 544, 545, 546, 547, 548, 549, 550, 551, 552, 553, 554, 555, 556, 557, 558, 559, 560, 561, 562, 563, 564, 565, 566, 567, 568, 569, 570, 571, 572, 573, 574, 575, 576, 577, 578, 579, 580, 581, 582, 583, 584, 585, 586, 587, 588, 589, 590, 591, 592, 593, 594, 595, 596, 597, 598, 599, 600, 601, 602, 603, 604, 605, 606, 607, 608, 609, 610, 611, 612, 613, 614, 615, 616, 617, 618, 619, 620, 621, 622, 623, 624, 625, 626, 627, 628, 629, 630, 631, 632, 633, 634, 635, 636, 637, 638, 639, 640, 641, 642, 643, 644, 645, 646, 647, 648, 649, 650, 651, 652, 653, 654, 655, 656, 657, 658, 659, 660, 661, 662, 663, 664, 665, 666, 667, 668, 669, 670, 671, 672, 673, 674, 675, 676, 677, 678, 679, 680, 681, 682, 683, 684, 685, 686, 687, 688, 689, 690, 691, 692, 693, 694, 695, 696, 697, 698, 699, 700, 701, 702, 703, 704, 705, 706, 707, 708, 709, 710, 711, 712, 713, 714, 715, 716, 717, 718, 719, 720, 721, 722, 723, 724, 725, 726, 727, 728, 729, 730, 731, 732, 733, 734, 735, 736, 737, 738, 739, 740, 741, 742, 743, 744, 745, 746, 747, 748, 749, 750, 751, 752, 753, 754, 755, 756, 757, 758, 759, 760, 761, 762, 763, 764, 765, 766, 767, 768, 769, 770, 771, 772, 773, 774, 775, 776, 777, 778, 779, 780, 781, 782, 783, 784, 785, 786, 787, 788, 789, 790, 791, 792, 793, 794, 795, 796, 797, 798, 799, 800, 801, 802, 803, 804, 805, 806, 807, 808, 809, 810, 811, 812, 813, 814, 815, 816, 817, 818, 819, 820, 821, 822, 823, 824, 825, 826, 827, 828, 829, 830, 831, 832, 833, 834, 835, 836, 837, 838, 839, 840, 841, 842, 843, 844, 845, 846, 847, 848, 849, 850, 851, 852, 853, 854, 855, 856, 857, 85

(164.4 x 76.7mm)

To accompany Australian Notice to Mariners 909/2020



Block for chart Aus 115

© Commonwealth of Australia 2020

(118.4 x 208.5mm)