

To accompany Australian Notice to Mariners 852/2020

ELECTRONIC NAVIGATIONAL CHART (ENC)
Larger scale ENC content exists in this area.
When using electronic navigation systems,
certain vessels (e.g. restricted by depth or
size) may benefit from the additional level of
detail shown in the largest scale ENC
product available.

Note for chart Aus 377

To accompany Australian Notice to Mariners 859/2020

ELECTRONIC NAVIGATIONAL CHART (ENC)
Larger scale ENC content exists in this area.
When using electronic navigation systems,
certain vessels (e.g. restricted by depth or
size) may benefit from the additional level of
detail shown in the largest scale ENC
product available.

Note for chart Aus 780

To accompany Australian Notice to Mariners 861/2020

ELECTRONIC NAVIGATIONAL CHART (ENC)
Larger scale ENC content exists in this area.
When using electronic navigation systems,
certain vessels (e.g. restricted by depth or
size) may benefit from the additional level of
detail shown in the largest scale ENC
product available.

Note for chart Aus 181

To accompany Australian Notice to Mariners 859/2020

ELECTRONIC NAVIGATIONAL CHART (ENC)
Larger scale ENC content exists in this area.
When using electronic navigation systems,
certain vessels (e.g. restricted by depth or
size) may benefit from the additional level of
detail shown in the largest scale ENC
product available.

Note for chart Aus 126

To accompany Australian Notice to Mariners 859/2020

ELECTRONIC NAVIGATIONAL CHART (ENC)
Larger scale ENC content exists in this area.
When using electronic navigation systems,
certain vessels (e.g. restricted by depth or
size) may benefit from the additional level of
detail shown in the largest scale ENC
product available.

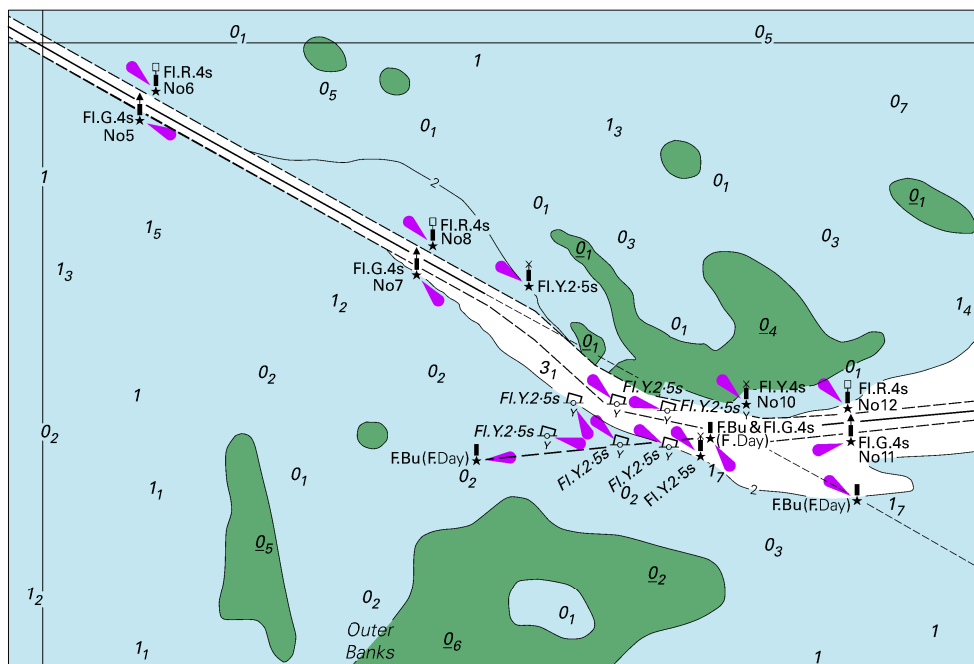
Note for chart Aus 781

To accompany Australian Notice to Mariners 861/2020

ELECTRONIC NAVIGATIONAL CHART (ENC)
Larger scale ENC content exists in this area.
When using electronic navigation systems,
certain vessels (e.g. restricted by depth or
size) may benefit from the additional level of
detail shown in the largest scale ENC
product available.

Note for chart Aus 357

To accompany Australian Notice to Mariners 850/2020

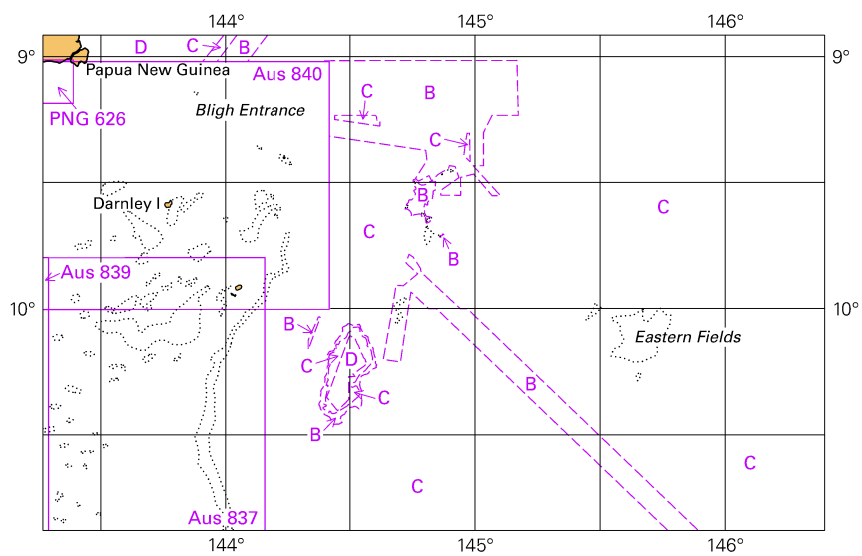


Block for chart Aus 6

© Commonwealth of Australia 2020

(129.0 x 87.0mm)

To accompany Australian Notice to Mariners 852/2020

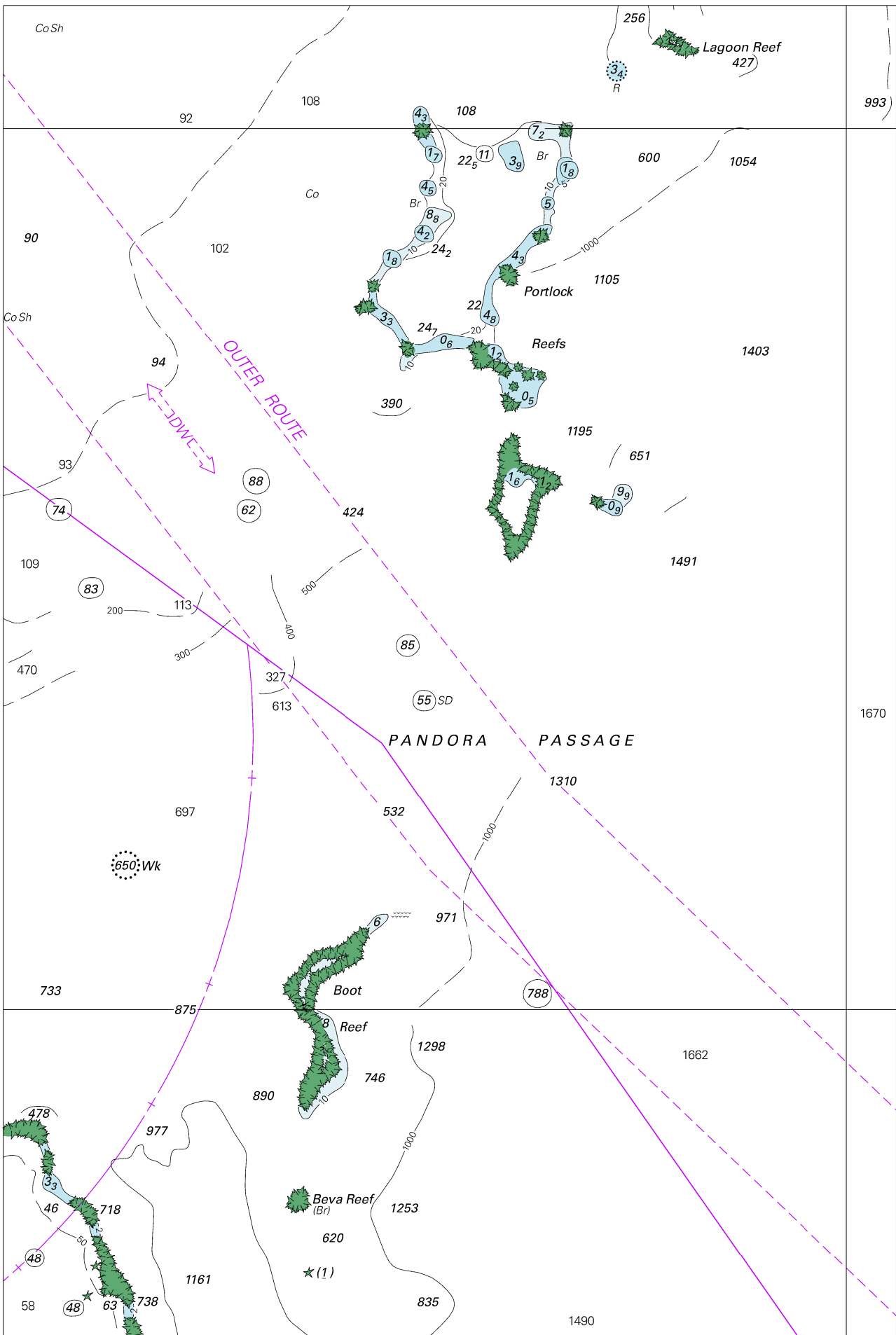


© Commonwealth of Australia 2020

Block for chart Aus 377

(103.3 x 65.3mm)

To accompany Australian Notice to Mariners 852/2020

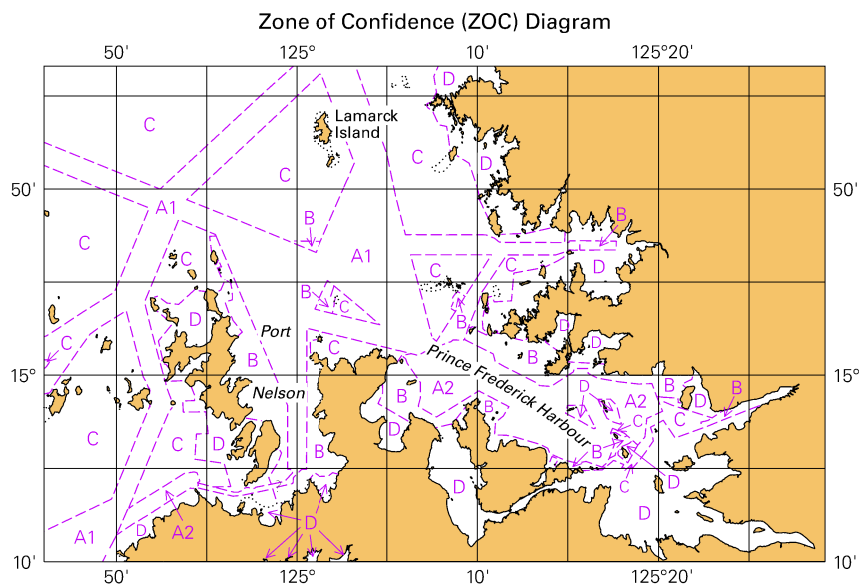


Block for chart Aus 377

© Commonwealth of Australia 2020

(168.6 x 251.3mm)

To accompany Australian Notice to Mariners 856/2020

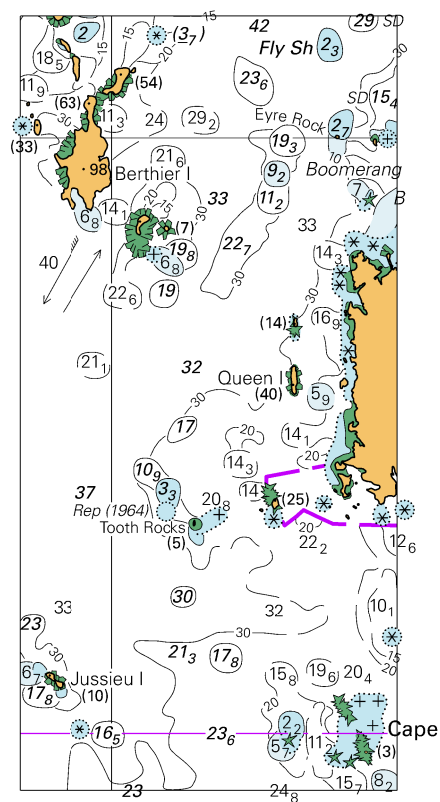


© Commonwealth of Australia 2020

Block for chart Aus 37 ZOC

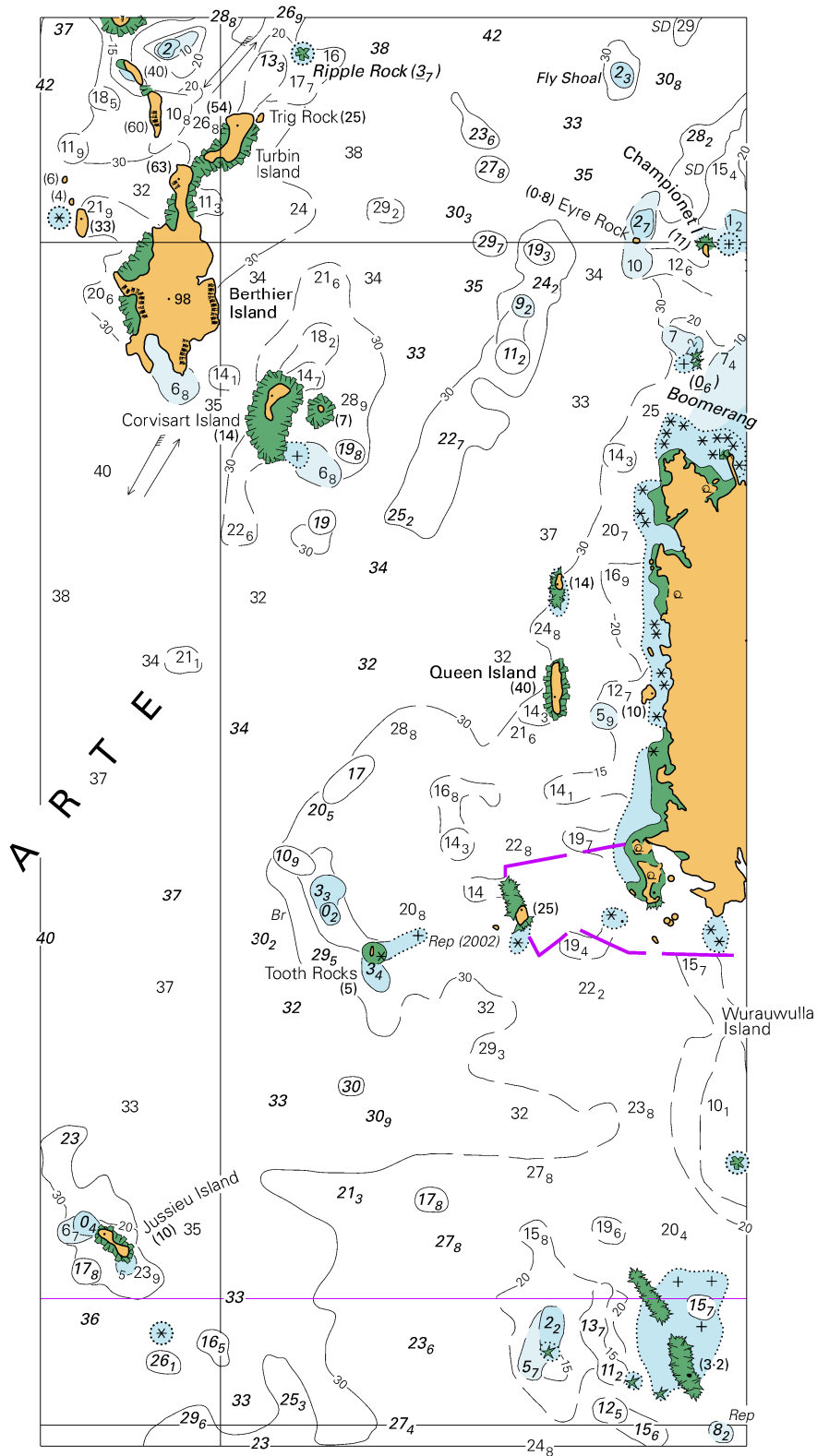
(103.2 x 65.4mm)

To accompany Australian Notice to Mariners 856/2020



© Commonwealth of Australia 2020
 Block for chart Aus 320 (49.9 x 102.4mm)

To accompany Australian Notice to Mariners 856/2020

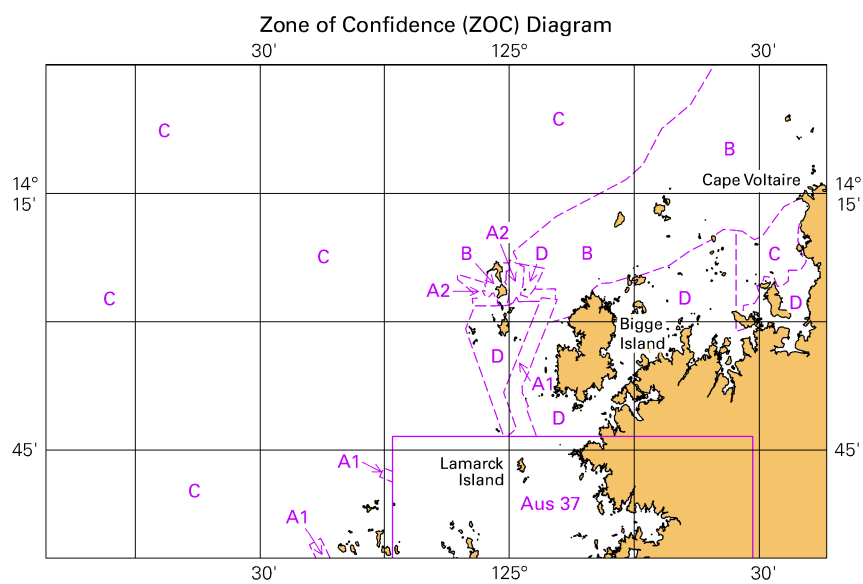


© Commonwealth of Australia 2020

Block for chart Aus 729

(101.1 x 204.7mm)

To accompany Australian Notice to Mariners 856/2020

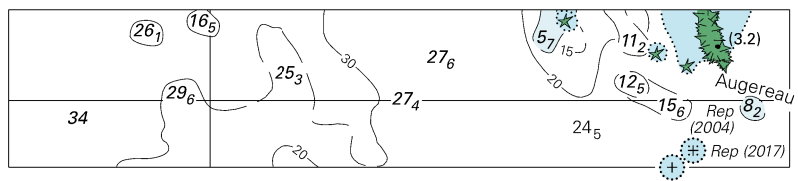


© Commonwealth of Australia 2020

Block for chart Aus 729 ZOC

(103.2 x 65.3mm)

To accompany Australian Notice to Mariners 856/2020

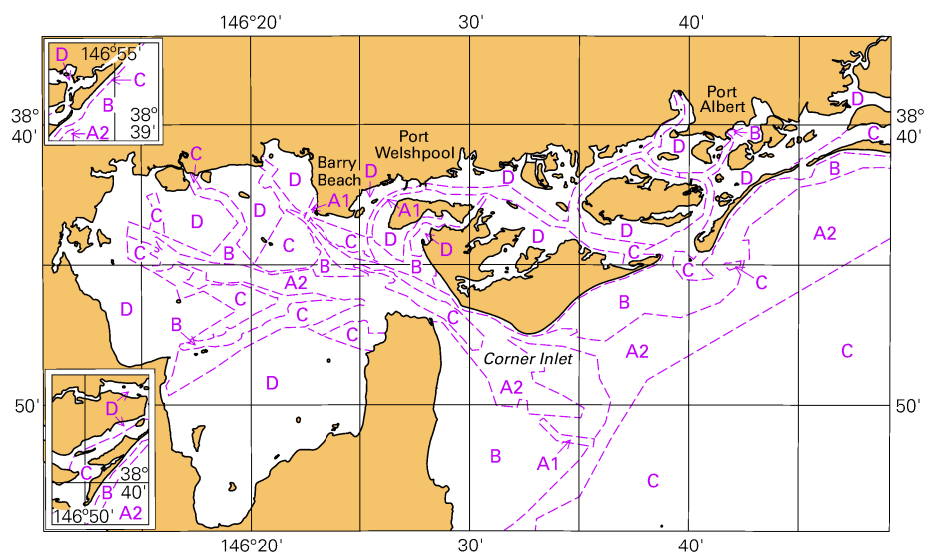


© Commonwealth of Australia 2020

Block for chart Aus 730

(103.3 x 20.8mm)

To accompany Australian Notice to Mariners 861/2020



© Commonwealth of Australia 2020

Block for chart Aus 181

(112.2 x 65.3mm)