

To accompany Australian Notice to Mariners 748/2020

ELECTRONIC NAVIGATIONAL CHART (ENC)

Larger scale ENC content exists in this area. When using electronic navigation systems, certain vessels (e.g. restricted by depth or size) may benefit from the additional level of detail shown in the largest scale ENC product available.

Note for chart Aus 120

To accompany Australian Notice to Mariners 748/2020

ELECTRONIC NAVIGATIONAL CHART (ENC)

Larger scale ENC content exists in this area. When using electronic navigation systems, certain vessels (e.g. restricted by depth or size) may benefit from the additional level of detail shown in the largest scale ENC product available.

Note for chart Aus 341

To accompany Australian Notice to Mariners 748/2020

ELECTRONIC NAVIGATIONAL CHART (ENC)

Larger scale ENC content exists in this area. When using electronic navigation systems, certain vessels (e.g. restricted by depth or size) may benefit from the additional level of detail shown in the largest scale ENC product available.

Note for chart Aus 342

To accompany Australian Notice to Mariners 748/2020

MARINE FARMS

Marine farms, which may be floating or fixed structures and their associated moorings should be avoided. The farms are generally marked by buoys or beacons, which may be lit. Their charted positions are approximate.

Note for chart Aus 341

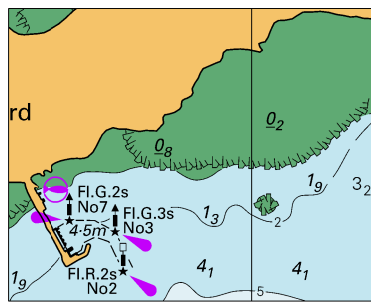
To accompany Australian Notice to Mariners 748/2020

ENVIRONMENTALLY SENSITIVE SEA AREA (ESSA)

Areas of this chart are Environmentally Sensitive Sea Areas (ESSA). Areas within this marine protected area have restrictions on access and activities. For details see Mariners Handbook for Australian Waters AHP 20.

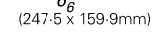
Note for chart Aus 342

To accompany Australian Notice to Mariners 748/2020

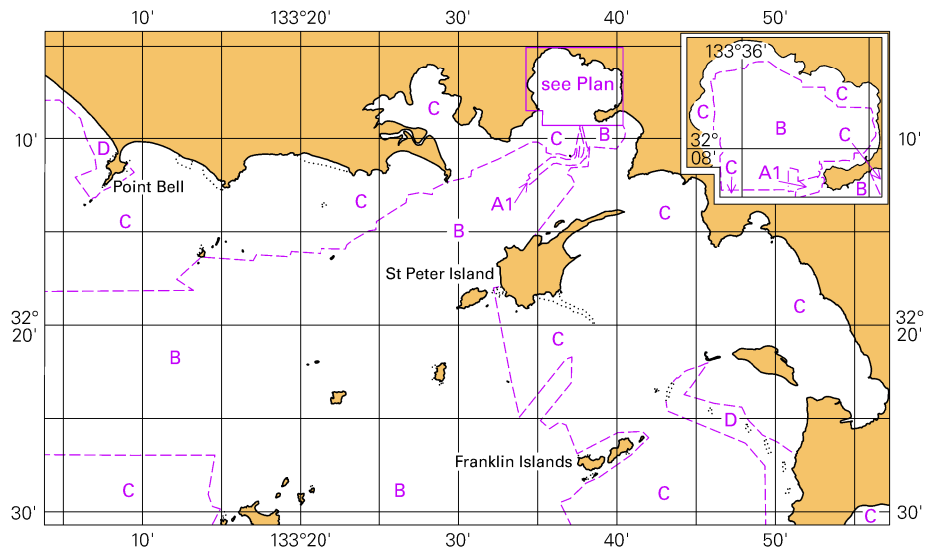


© Commonwealth of Australia 2020
Block B for chart Aus 120 (49.0 x 38.6mm)

★ Aero Fl.10s 37m 26M (occas)



To accompany Australian Notice to Mariners 748/2020

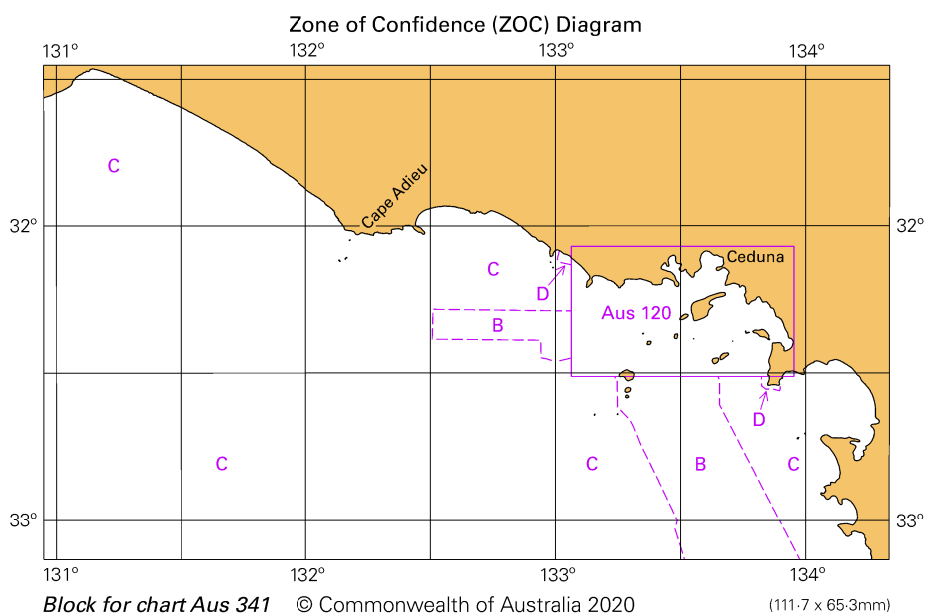


© Commonwealth of Australia 2020

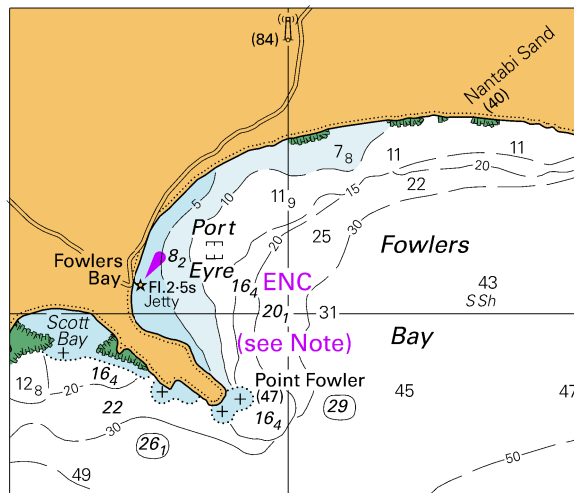
Block for chart Aus 120

(111.7 x 65.3mm)

To accompany Australian Notice to Mariners 748/2020



To accompany Australian Notice to Mariners 748/2020

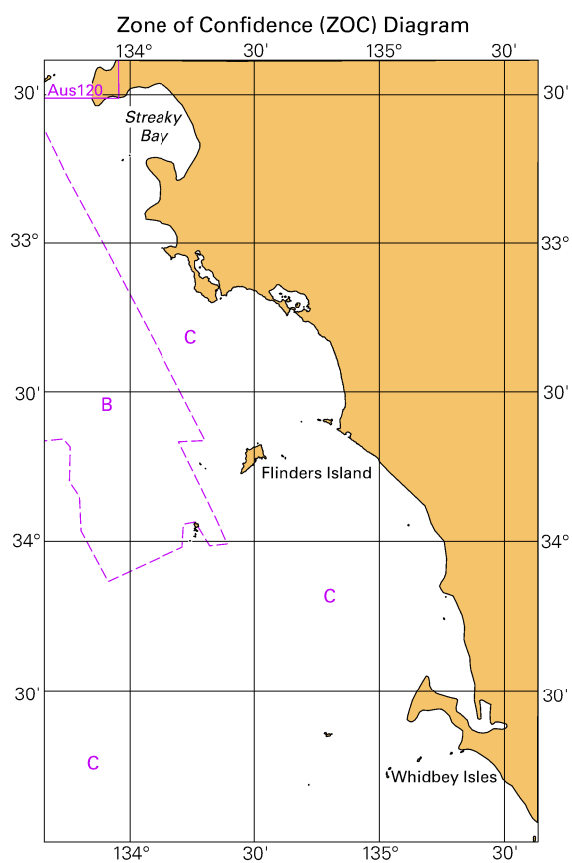


© Commonwealth of Australia 2020

Block for chart Aus 341

(75.9 x 64.2mm)

To accompany Australian Notice to Mariners 748/2020



© Commonwealth of Australia 2020

Block for chart Aus 342

(65.3 x 103.3mm)

