

*To accompany Australian Notice to Mariners 688/2020*

ELECTRONIC NAVIGATIONAL CHART (ENC)

Larger scale ENC content exists in this area. When using electronic navigation systems, certain vessels (e.g. restricted by depth or size) may benefit from the additional level of detail shown in the largest scale ENC product available.

*Note for chart Aus 207*

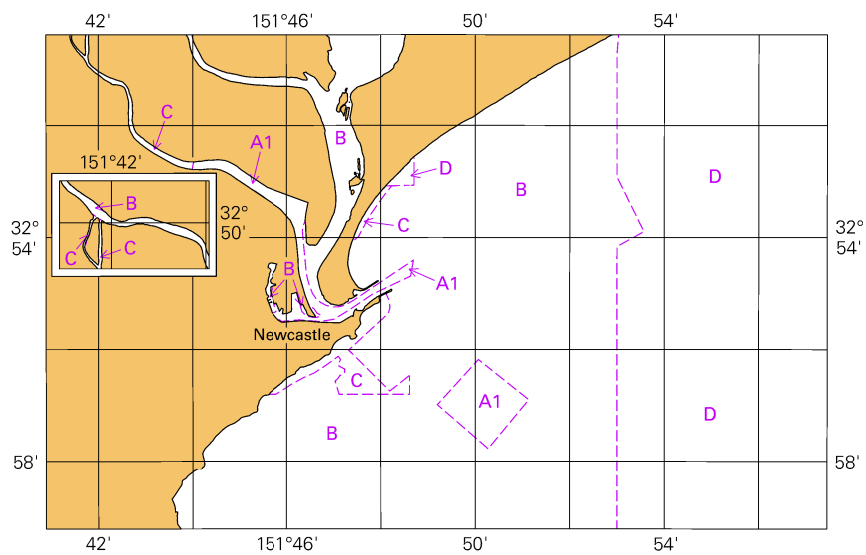
*To accompany Australian Notice to Mariners 700/2020*

ELECTRONIC NAVIGATIONAL CHART (ENC)

Larger scale ENC content exists in this area. When using electronic navigation systems, certain vessels (e.g. restricted by depth or size) may benefit from the additional level of detail shown in the largest scale ENC product available.

*Note for chart Aus 50*

To accompany Australian Notice to Mariners 688/2020

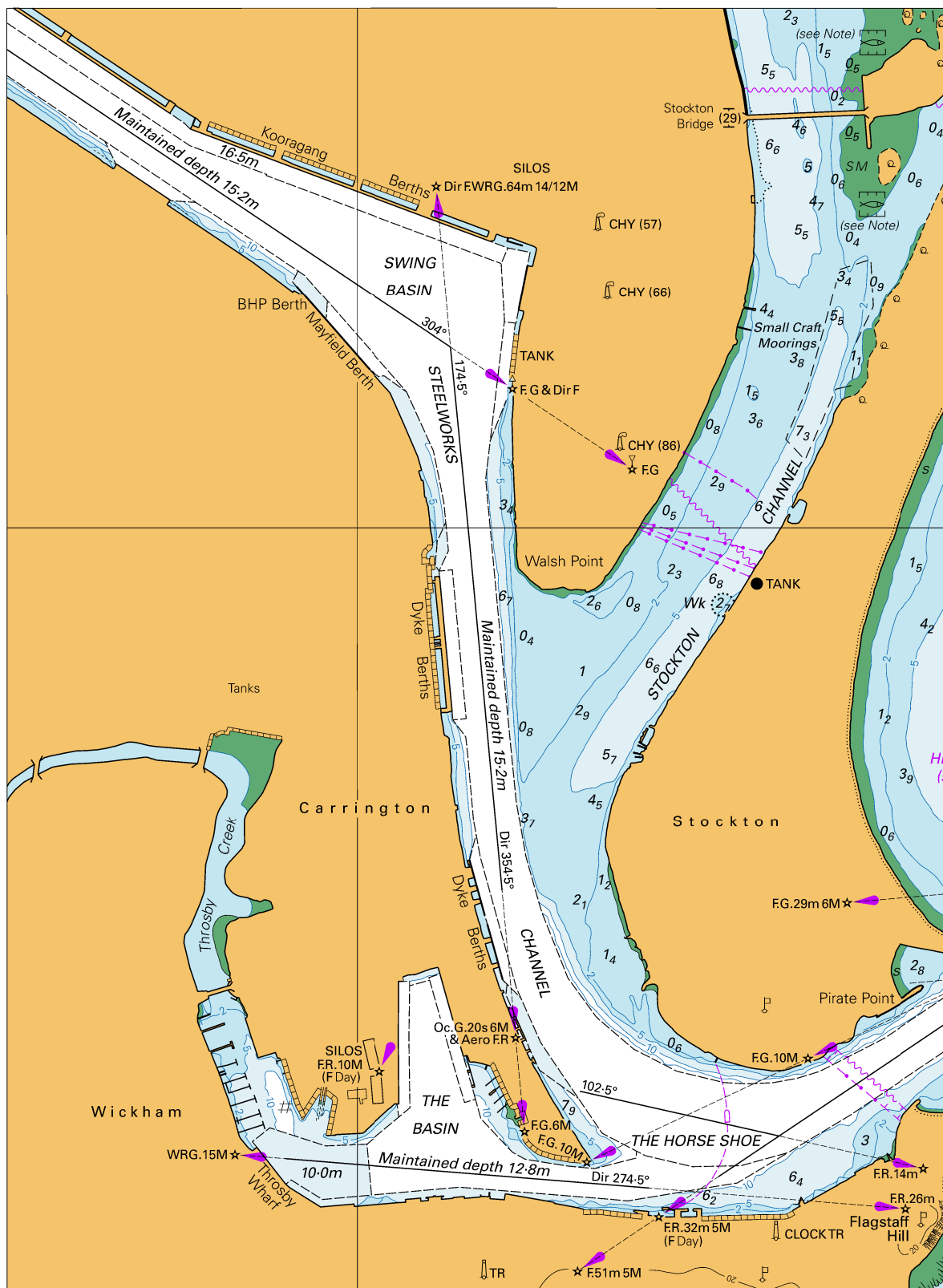


© Commonwealth of Australia 2020

Block for chart Aus 207

(103.3 x 65.3mm)

To accompany Australian Notice to Mariners 688/2020

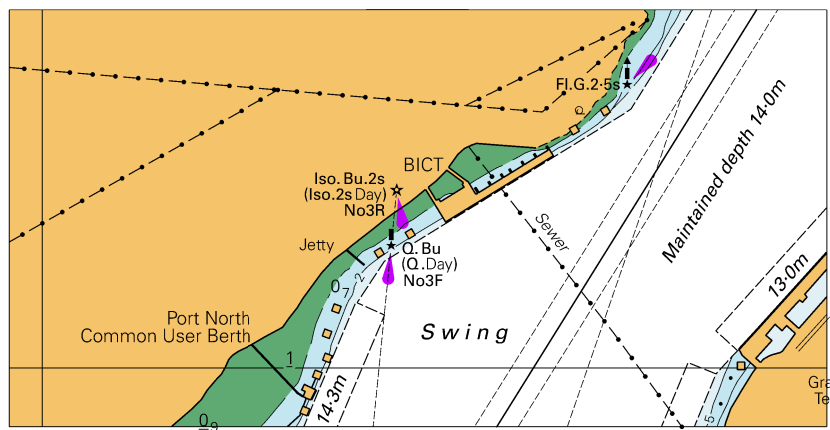


Block for chart Aus 207

© Commonwealth of Australia 2020

(154.7 x 211.5mm)

To accompany Australian Notice to Mariners 690/2020

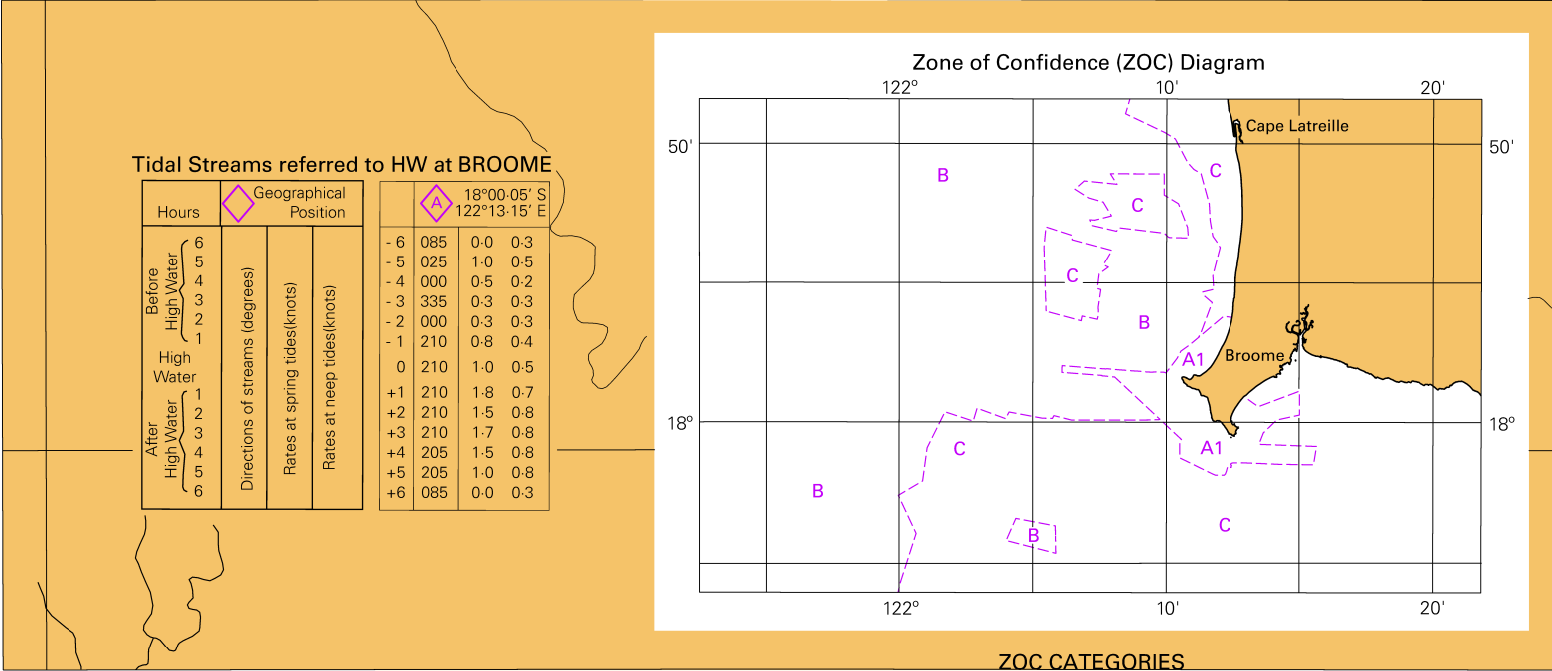


© Commonwealth of Australia 2020

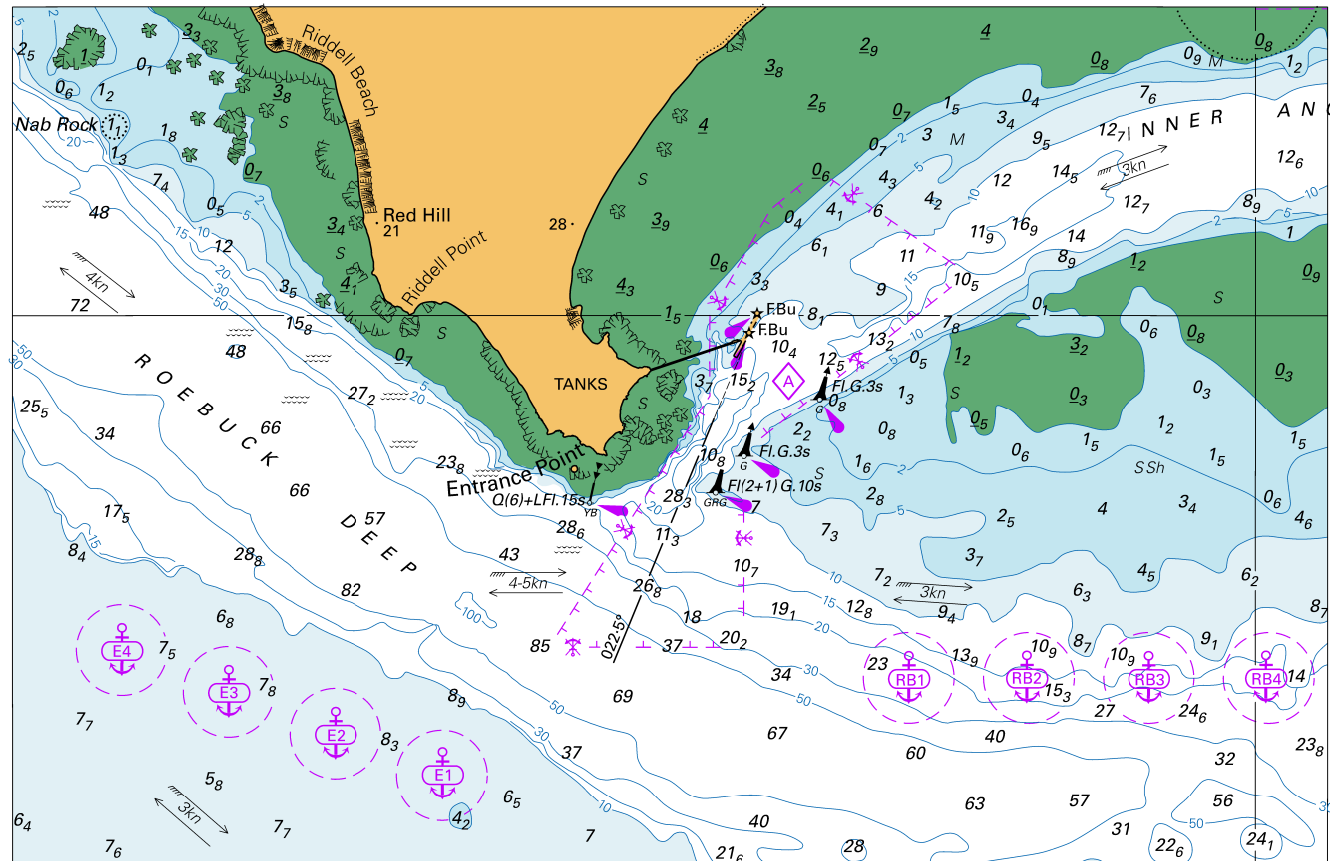
Block for chart Aus 237

(108.1 x 55.0mm)

To accompany Australian Notice to Mariners 700/2020



To accompany Australian Notice to Mariners 700/2020

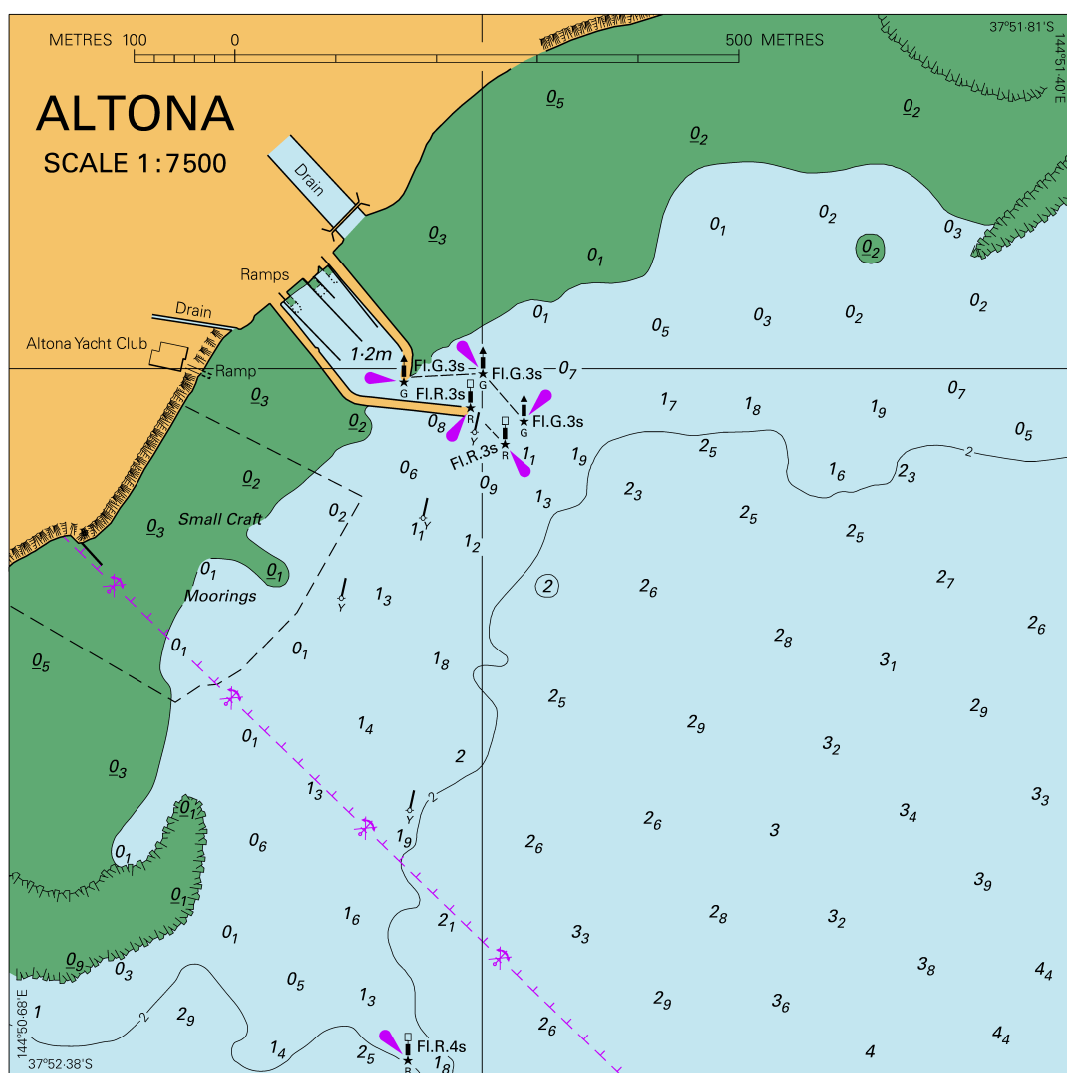


Block A for chart Aus 50

© Commonwealth of Australia 2020

(174.0 x 113.6mm)

To accompany Australian Notice to Mariners 702/2020



Block for chart Aus 155

© Commonwealth of Australia 2020

(140.8 x 140.6mm)