

*To accompany Australian Notice to Mariners 647/2020*

ELECTRONIC NAVIGATIONAL CHART (ENC)  
Larger scale ENC content exists in this area.  
When using electronic navigation systems,  
certain vessels (e.g. restricted by depth or  
size) may benefit from the additional level of  
detail shown in the largest scale ENC  
product available.

*Note for chart Aus 198*

*To accompany Australian Notice to Mariners 653/2020*

ELECTRONIC NAVIGATIONAL CHART (ENC)  
Larger scale ENC content exists in this area.  
When using electronic navigation systems,  
certain vessels (e.g. restricted by depth or  
size) may benefit from the additional level of  
detail shown in the largest scale ENC  
product available.

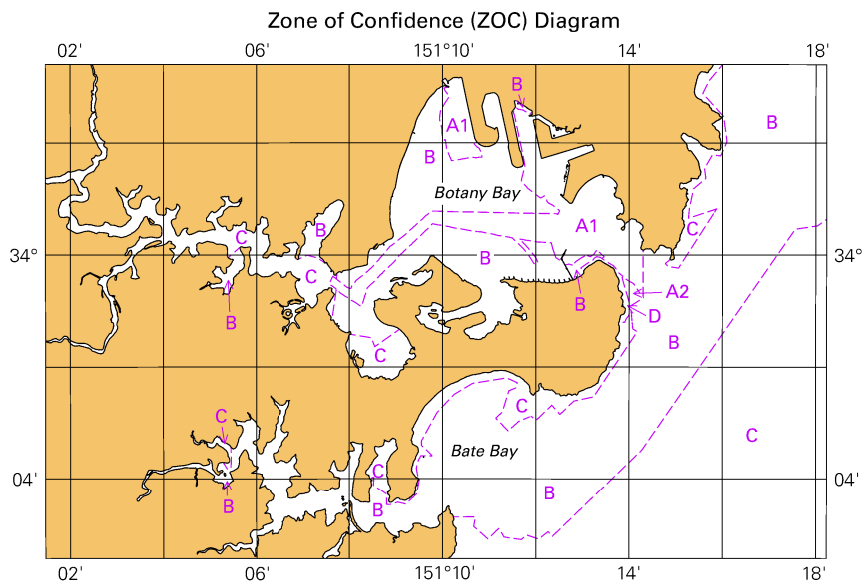
*Note for chart Aus 840*

*To accompany Australian Notice to Mariners 653/2020*

ELECTRONIC NAVIGATIONAL CHART (ENC)  
Larger scale ENC content exists in this area.  
When using electronic navigation systems,  
certain vessels (e.g. restricted by depth or  
size) may benefit from the additional level of  
detail shown in the largest scale ENC  
product available.

*Note for chart Aus 839*

To accompany Australian Notice to Mariners 647/2020

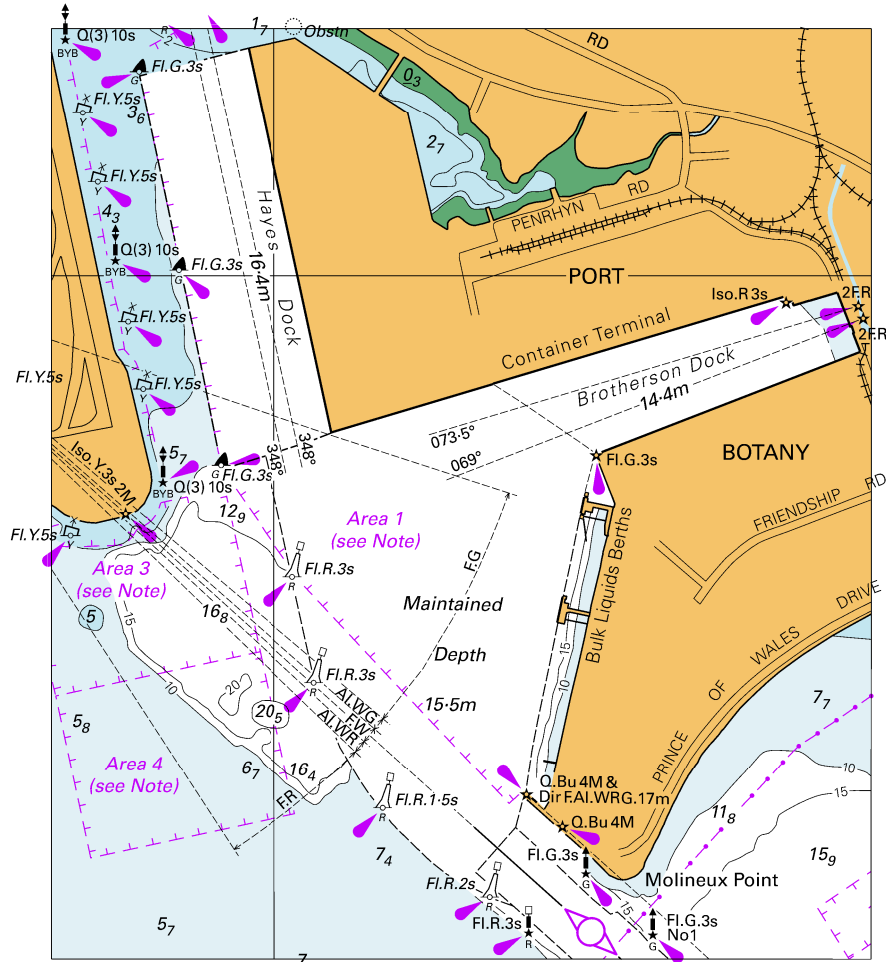


Block for chart Aus198

© Commonwealth of Australia 2020

(102.5 x 65.3mm)

To accompany Australian Notice to Mariners 647/2020

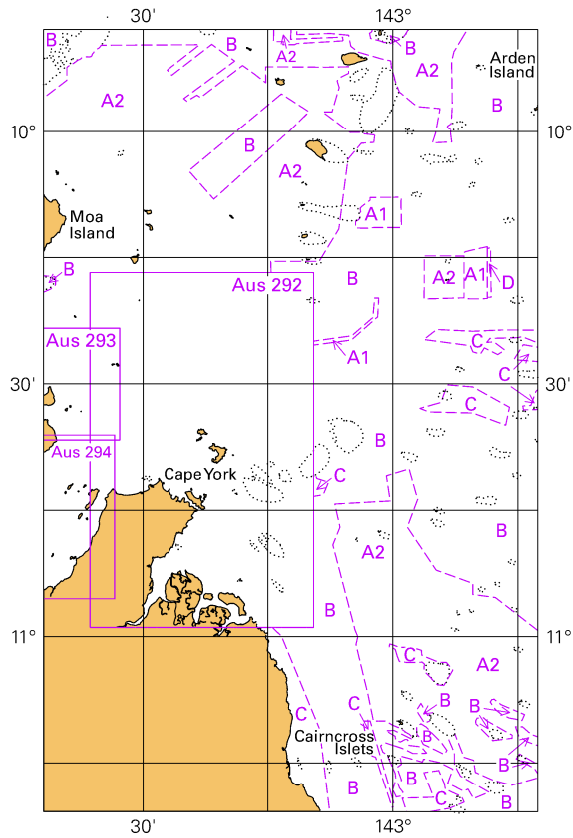


Block for chart Aus 198

© Commonwealth of Australia 2020

(108.4 x 123.1mm)

To accompany Australian Notice to Mariners 653/2020



© Commonwealth of Australia 2020

Block for chart Aus 839

(65.4 x 103.4mm)