

To accompany Australian Notice to Mariners 529/2020

ELECTRONIC NAVIGATIONAL CHART (ENC)

Larger scale ENC content exists in this area. When using electronic navigation systems, certain vessels (e.g. restricted by depth or size) may benefit from the additional level of detail shown in the largest scale ENC product available.

Note for chart Aus 810

To accompany Australian Notice to Mariners 529/2020

ELECTRONIC NAVIGATIONAL CHART (ENC)

Larger scale ENC content exists in this area. When using electronic navigation systems, certain vessels (e.g. restricted by depth or size) may benefit from the additional level of detail shown in the largest scale ENC product available.

Note for chart Aus 812

To accompany Australian Notice to Mariners 529/2020

ESTUARY AND RIVER ENTRANCES

The crossing of coastal bars and entry to rivers and estuaries is potentially dangerous. Bars and entrances are dynamic in nature, hence the depth and preferred approach may vary. Leading beacons and other navigational aids may not always indicate the best approach. If mariners are unsure of the condition at a particular bar or entrance, local information should be sought prior to crossing.

Note for chart Aus 813

To accompany Australian Notice to Mariners 534/2020

RESTRICTED AREA - AIRCRAFT FLIGHT ZONE

Vessels with an overall height greater than 9 metres are prohibited from entering an area 0.55M from the shoreline. All vessels are requested to avoid the flight path zone and are advised not to stop if transiting. Contact Vessel Traffic Service Brisbane on VHF channel 12 for further information.

Note for chart Aus 236

To accompany Australian Notice to Mariners 529/2020

ELECTRONIC NAVIGATIONAL CHART (ENC)

Larger scale ENC content exists in this area. When using electronic navigation systems, certain vessels (e.g. restricted by depth or size) may benefit from the additional level of detail shown in the largest scale ENC product available.

Note for chart Aus 811

To accompany Australian Notice to Mariners 529/2020

ELECTRONIC NAVIGATIONAL CHART (ENC)

Larger scale ENC content exists in this area. When using electronic navigation systems, certain vessels (e.g. restricted by depth or size) may benefit from the additional level of detail shown in the largest scale ENC product available.

Note for chart Aus 813

To accompany Australian Notice to Mariners 529/2020

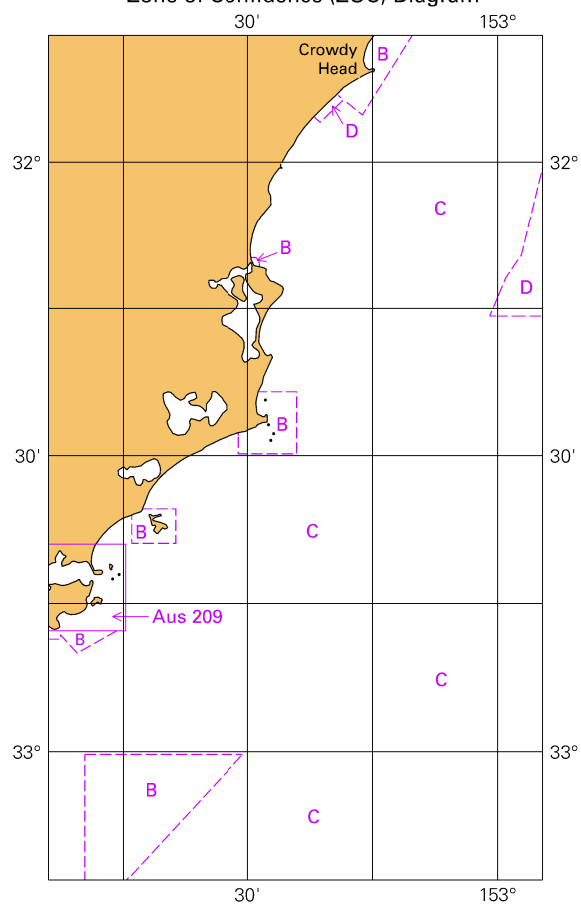
ELECTRONIC NAVIGATIONAL CHART (ENC)

Larger scale ENC content exists in this area. When using electronic navigation systems, certain vessels (e.g. restricted by depth or size) may benefit from the additional level of detail shown in the largest scale ENC product available.

Note for chart Aus 814

To accompany Australian Notice to Mariners 529/2020

Zone of Confidence (ZOC) Diagram

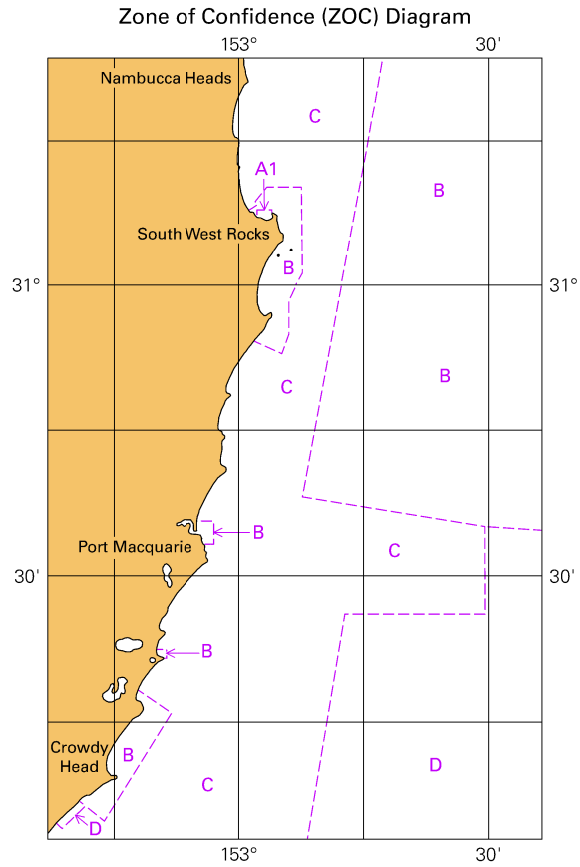


Block for chart Aus 810

(65.4 x 111.7 mm)

© Commonwealth of Australia 2020

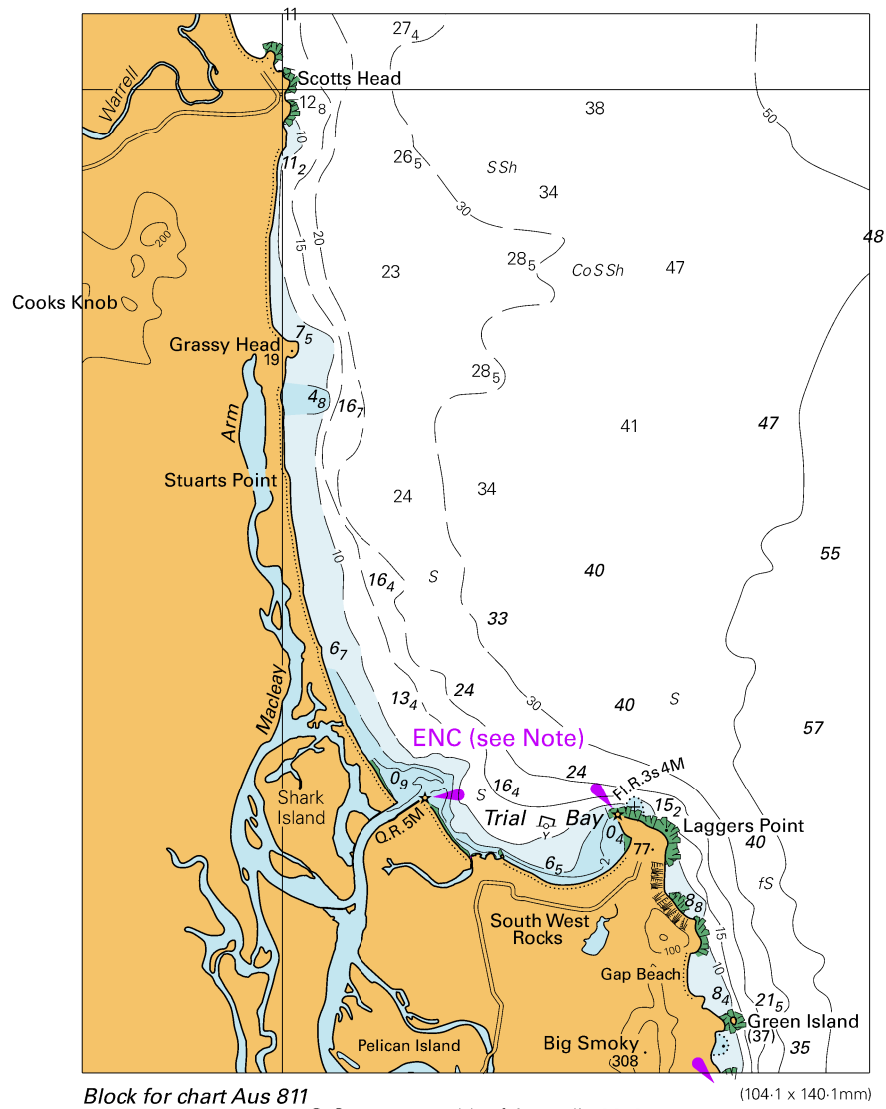
To accompany Australian Notice to Mariners 529/2020

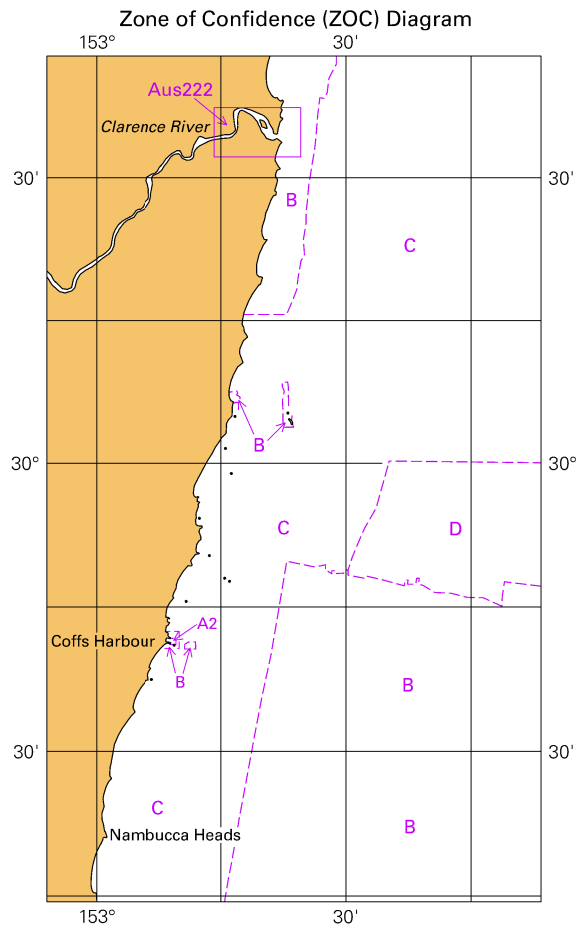


Block for chart Aus 811

(65.4 x 103.3 mm)

© Commonwealth of Australia 2020



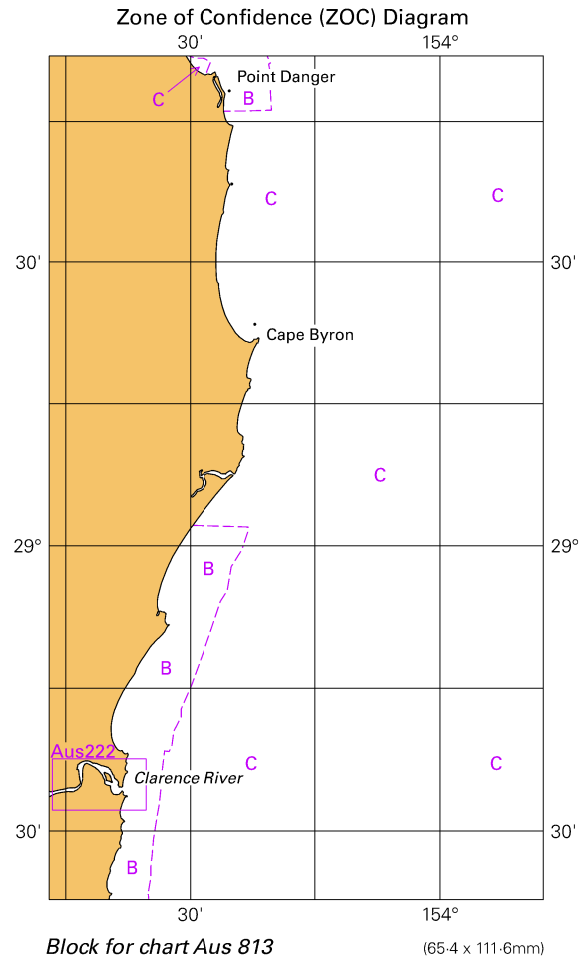


Block for chart Aus 812

(65.4 x 111.8mm)

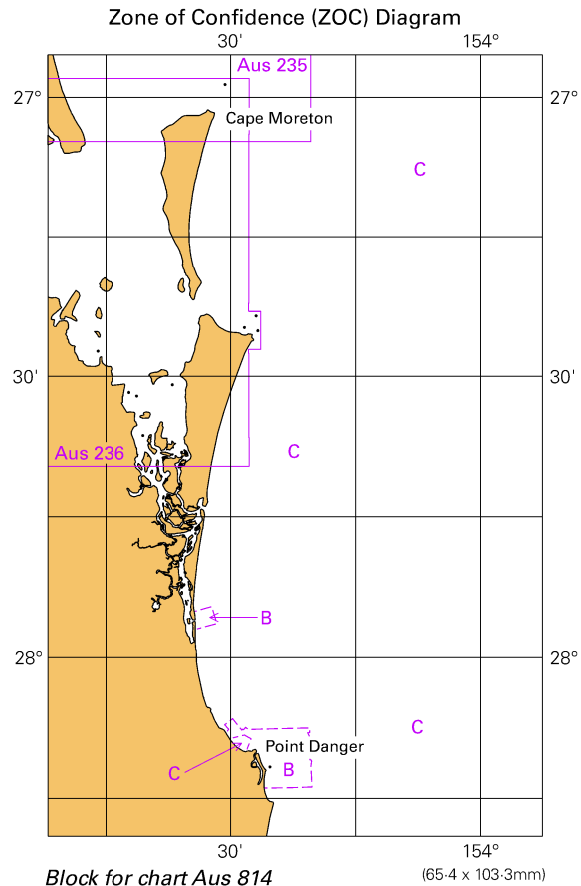
© Commonwealth of Australia 2020

To accompany Australian Notice to Mariners 529/2020



© Commonwealth of Australia 2020

To accompany Australian Notice to Mariners 529/2020



© Commonwealth of Australia 2020