

To accompany Australian Notice to Mariners 588/2020

ELECTRONIC NAVIGATIONAL CHART (ENC)

Larger scale ENC content exists in this area. When using electronic navigation systems, certain vessels (e.g. restricted by depth or size) may benefit from the additional level of detail shown in the largest scale ENC product available.

Note for chart Aus 807

To accompany Australian Notice to Mariners 588/2020

UNEXPLODED ORDNANCE (UXO)

The area is safe for surface navigation only; it is not safe for anchoring, trawling or seabed activities. For details see Mariners Handbook for Australian Waters AHP 20.

Note for chart Aus 807

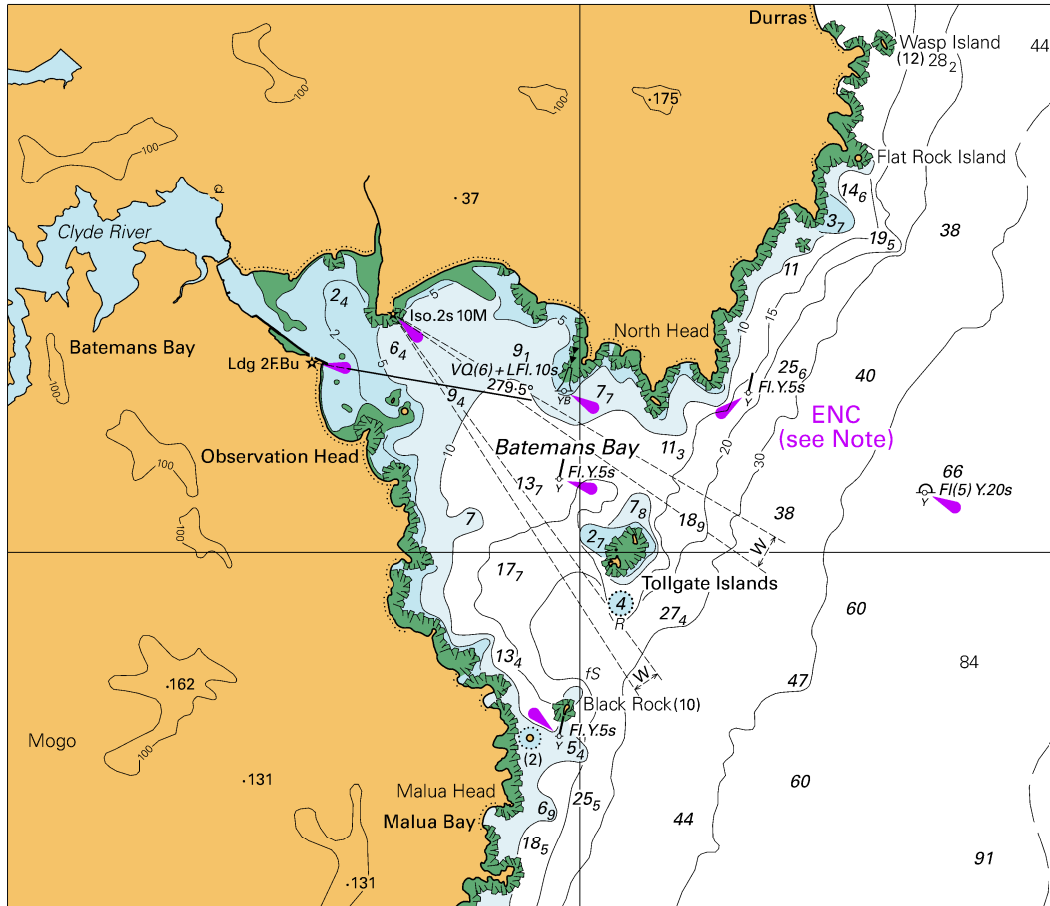
To accompany Australian Notice to Mariners 588/2020

ESTUARY AND RIVER ENTRANCES

The crossing of coastal bars and entry to rivers and estuaries is potentially dangerous. Bars and entrances are dynamic in nature, hence the depth and preferred approach may vary. Leading beacons and other navigational aids may not always indicate the best approach. If mariners are unsure of the condition at a particular bar or entrance, local information should be sought prior to crossing.

Note for chart Aus 807

To accompany Australian Notice to Mariners 588/2020



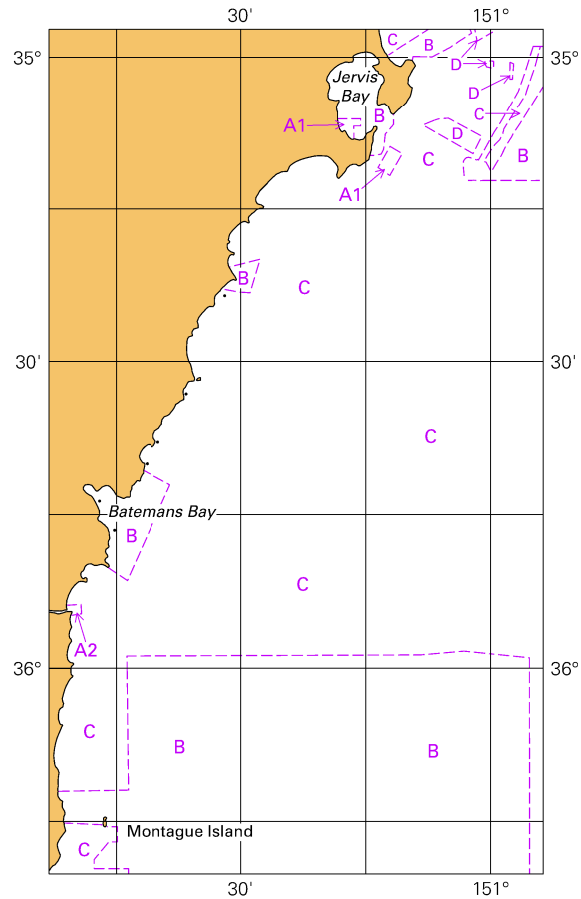
Block for chart Aus 807

© Commonwealth of Australia 2020

(138.0 x 119.4mm)

To accompany Australian Notice to Mariners 588/2020

Zone of Confidence (ZOC) Diagram



© Commonwealth of Australia 2020

Block for chart Aus 807

(65.4 x 111.8mm)