

To accompany Australian Notice to Mariners 748/2020

ENVIRONMENTALLY SENSITIVE SEA AREA
(ESSA)

Areas of this chart are Environmentally Sensitive Sea Areas (ESSA). Areas within this marine protected area have restrictions on access and activities. For details see Mariners Handbook for Australian Waters AHP 20.

Note for chart Aus 342

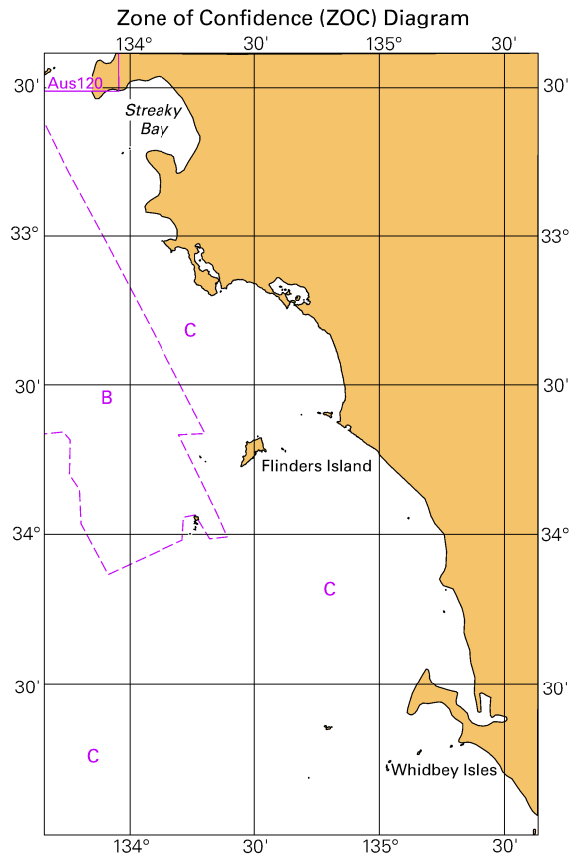
To accompany Australian Notice to Mariners 748/2020

ELECTRONIC NAVIGATIONAL CHART (ENC)

Larger scale ENC content exists in this area. When using electronic navigation systems, certain vessels (e.g. restricted by depth or size) may benefit from the additional level of detail shown in the largest scale ENC product available.

Note for chart Aus 342

To accompany Australian Notice to Mariners 748/2020



© Commonwealth of Australia 2020

Block for chart Aus 342

(65.3 x 103.3mm)

