

**PRINTED COPIES ARE UNCONTROLLED**

AUSTRALIAN HYDROGRAPHIC SERVICE MANAGEMENT SYSTEM DOCUMENT

© Commonwealth of Australia 2015.

**SPECIFICATION -  
AUSTRALIAN  
PAPER CHART TEXT FEATURES  
&  
ENC 'OBJNAM' CONVENTIONS**

Prepared by  
Australian Hydrographic Office  
8 Station Street Wollongong NSW 2500, Australia  
Phone: (02) 4223 6500 Fax: (02) 4223 6599  
© Commonwealth of Australia

**Document Review Date: October 2016**

Document Owner:

DDCSS  
(J. WOOTTON)

Authorised by:

DCS  
(M.E. PRINCE)

**This document is authorised via the electronic signature capability in the DRMS  
Approval delegations and authorisation history can be viewed in the DRMS**

**THIS DOCUMENT IS UNCONTROLLED ONCE PRINTED**  
(Conditions of use are specified in SP\_01\_00\_AA6998)

### Document History

The version status of this document is the same for all pages			
Version	DESCRIPTION OF CHANGE	Date	Authorised
<b>6</b>	<b>All changes from previous versions incorporated</b>	<b>04 Apr 13</b>	<b>DCS</b>
	Add new table entries for "Former Mined Area" and "Unexploded Ordnance" – reference to chart Note (request from P. Naumoski for ENC encoding guidance for unexploded ordnance – fAA118414).	22 Jul 13	DDCSS
	Add new table entry for "Tidal Heights" (upright text style) to avoid confusion with specification for "Tidal Streams and Currents", which is in italic style (enquiry from P. Rustomji).	01 Apr 15	DDCSS
	Clarification added to "Current" and new table entry added for "Tidal Streams and Currents" to avoid confusion with charted note reference for "currents" only, noting that reference to any charted Note that does not have any other associated text/symbology should always be 8 pt medium text (enquiry from P. Rustomji).	19 Aug 13	DDCSS
	Annex D – specification for cautionary/explanatory note format relocated to AHS Charting Specifications clause B-242, and this reference added to replace (enquiry from P. Rustomji AA800625).	30 Mar 15	DDCSS
	Replace diagram at Annex F with updated example of ZOC Categories Table.	30 Mar 15	DDCSS
	Replace diagram at Annex G with updated example of Chart block and Chart note marginalia.	30 Mar 15	DDCSS
<b>7</b>	<b>New version to incorporate above amendments.</b>	<b>09 Apr 15</b>	<b>DCS</b>

© Commonwealth of Australia 2015.

This work is copyright. Apart from any use permitted under the *Copyright Act 1968*, no part may be reproduced by any process, adapted or commercially exploited without prior written permission from the Commonwealth represented by the Australian Hydrographic Service.

**CONTENTS**

**1. PURPOSE ..... 4**

**2. SCOPE ..... 4**

**3. REFERENCES ..... 4**

**4. DEFINITIONS ..... 4**

**5. RESPONSIBILITIES ..... 4**

**6. EXPLANATORY NOTES ..... 5**

**ANNEX A – PAPER CHART TEXT FEATURE AND S-57 / ENC OBJECT NAME ..... 7**

**ANNEX B – BORDER AND MARGINAL DETAILS ..... 46**

**ANNEX C - COPYRIGHT / RELATED PUBLICATION DETAILS..... 48**

**ANNEX D - TITLE, CONSTRUCTION AND CHART NOTES..... 49**

**ANNEX E - TIDAL STREAM AND TIDAL LEVEL PANELS ..... 50**

**ANNEX F - ZOC DIAGRAMS..... 51**

**ANNEX G – NOTICES TO MARINERS BLOCK MARGINALIA ..... 52**

## 1. PURPOSE

a) The purpose of this document is to provide specifications and guidance on the text conventions to be used in the composition of paper nautical charts produced by the Australian Hydrographic Service (AHS), and the comparable population of the Object Name ("OBJNAM") attribute for Feature Objects in Electronic Navigation Charts (ENCs).

## 2. SCOPE

a) This document is applicable to all compilers, reviewers and quality assurance staff involved in the production of Australian paper nautical charts (and their Raster / Geotiff derivatives), as well as all official ENCs produced by or on behalf of the AHS.

b) This specification is not applicable to Military Geospatial Intelligence products. However, in producing military charts consisting of additional data overlaid on an otherwise standard paper navigation chart, every effort should be made to leave the existing text unaltered, and follow the intent of this document for additional text, except where this conflicts with the specific requirements of the military chart.

## 3. REFERENCES

a) This document is to be read in conjunction with the following documents as applicable:

- i) SPEC\_05\_55\_AA223480 AHS Charting Specifications
- ii) SPEC\_05\_55\_AA34159 Australian Use of the Object Catalogue (AUOC).

## 4. DEFINITIONS

a) Nil.

## 5. RESPONSIBILITIES

a) The Deputy Director Charting Standards and Specifications (DDCSS) is responsible for the ongoing maintenance of this Specification. Deputy Director Chart Production and Maintenance (DDCPM) is responsible for the adherence of all relevant charts to this Specification, and shall provide input to DDCSS on updates to this Specification (in consultation with the Charting Technical Working Group (CTWG)). DCS shall approve updates to this Specification.

**6. EXPLANATORY NOTES**

- a) The specifications in this document are based on the use of the true type UNIVERS text font with 1 point = 0.25mm. The document is in alphabetical order in terms of paper chart text types.
- b) The "S-57 Object Class" column indicates the Object Class for which the attribute OBJNAM is to be populated only where the object is named. It is not designed to indicate the population of OBJNAM for paper chart descriptive terms, which are translated to attribute values.
- c) All text is to be in upright text unless stipulated as Italics in the Type column. Text shown within quotation marks in the Text column is to be represented on the chart as indicated.
- d) NA in the "S-57 Object Class" column indicates paper chart specific text having no object name translated to ENC, but translates to an attribute value. NA in the "Type" column indicates an object which is named, and may be populated for ENC, but which is not shown as a named object on paper charts, e.g.:

Text		Type	S-57 ENC Object Class	INT Ref
Arc of Visibility Colours		6 pt Medium U/L Black	NA	P 20-46

indicates text shown on paper charts which is descriptive or annotative text applying to paper chart symbology only, but are not the names of S-57 objects and are therefore not applicable to ENC, whereas:

Text		Type	S-57 ENC Object Class	INT Ref
Anchorage (recommended)		NA	<b>ACHARE</b>	N 10

indicates that the attribute OBJNAM (if a name exists for the object) may be populated for the object class **ACHARE**, but the name is not applicable to paper charts and would not be shown.

- e) Point sizes and line weights shown in this table are the minimum to be used for the particular text, if an option is given.
- f) The following table is to be used for product compilation only. Issues regarding the population of the attribute OBJNAM for objects in DHDB Validated Data are to be addressed in DHDB Work Instructions.
- g) Definitions of Important, Less Important and Unimportant, listed in the Text column, are given for guidance only. Other factors to be considered when determining appropriate text sizes and line weights include scale and intended usage of the chart, existence of larger scale charts in the geographical area of concern, and density of information depicted in the geographic area.

h) Where the charted name of a feature is incorporated in the title of the chart, the minimum point size and line weight to be used for the charted name must be 9pt Medium.

i) \* Master object is the structure (e.g. **BOY???**, **BCN???**, **LNDMRK**, **BUISGL**). If the structure object is unknown then the **LIGHTS** object becomes the master (refer to S-57 Appendix B.1 - Annex A, Use of the Object Catalogue for ENC, Clauses 12.1.1, 12.1.2).

j) Abbreviations used are:

i) pt Point - 1 point = 0.25mm e.g. 6 pt = 1.5mm

ii) U/L Upper/Lower Case

**Annex:**

- A. Alphabetical Listing of Text Features
- B. Border And Marginal Details
- C. Copyright / Related Publication Details
- D. Title, Construction And Chart Notes
- E. Tide And Tidal Stream Panels
- F. ZOC Diagrams
- G. Notices to Mariners Block Marginalia

**ANNEX A – PAPER CHART TEXT FEATURE AND S-57 / ENC OBJECT NAME**

<b>A</b>				
Text		Type	S-57 ENC Object Class	INT Ref
Abbyssal Plain		See <a href="#">Oceanographic Features</a>	<b>SEAARE</b>	
Adjoining Chart - Reference to		See <a href="#">Chart Reference</a> - Adjoining Chart and <a href="#">Annex B</a> .	NA	A
Administration Area			<b>ADMARE</b>	
	Description (e.g. Aboriginal Reserve)	8 pt Medium U/L Black. A larger point size, capitals and/or spacing may be used in large areas. 7 pt may be used in congested areas.	NA	
	Named	Refer to related feature (e.g. <a href="#">Town</a> , <a href="#">Important</a> )	<b>ADMARE</b>	
Aero Light		See <a href="#">Light</a> - Aero	<b>LIGHTS</b>	P 60
Aero Radiobeacon (Aero RC)		No longer depicted on Australian nautical charts	NA	S 16
AHO Address		8 pt Light U/L Black. See Annex B.	NA	
Airfield		6 pt Light U/L Black. A larger point size and/or capitals may be used for major airports or airfields covering a large portion of the chart.	<b>AIRARE</b>	D 17
Air Obstruction Light		See <a href="#">Light</a> - Air Obstruction	NA	P 61
Air Radiobeacon		No longer depicted on Australian nautical charts	NA	S 16
AIS Aids to Navigation	Description – “Real” and “Synthetic” (AIS)	6 pt Medium Capitals Magenta. Italics must be used when associated with a floating aid to navigation.	NA	S 17
	Description – “Virtual” (V-AIS)	6 pt Medium Capitals Magenta.	<b>NEWOBJ</b>	
Anchor Berth Identifier		6 pt Medium Capitals Magenta	<b>ACHBRT</b>	N 11
Anchorage Area Name, Number or Type		6 pt Medium U/L Italics Magenta	<b>ACHARE</b>	
Anchoring Prohibited		NA	<b>RESARE</b> (see also Object Classes carrying attribute RESTRN)	N 20
Anchorage (recommended)		NA	<b>ACHARE</b>	N 10
Arc of Visibility Colours		6 pt Medium U/L Black	NA	P 40-46
Archipelago		8 pt Medium U/L Black. The use of a larger point size, capitals and/or spacing will depend on size of Island group and coverage	<b>LNDRGN, C_AGGR</b>	
Area to be Avoided		See relevant nature of restriction	NA	M 29.2
Associated Publications Note		Refer <a href="#">Annex C</a>		A 20
Atoll		7 pt Medium U/L Italics Black. The use of a larger point size, capitals and/or spacing will depend on area of feature.	<b>SBDARE, SEAARE, C_AGGR</b>	
Avenue		See <a href="#">Road - Named</a>	<b>ROADWY</b>	

Aus Chart Number		24 pt Medium Black. See <a href="#">Annex B.</a>	NA	A 1
Awash		6 pt Light U/L Italics Black	NA	



<b>B</b>				
Text		Type	S-57 ENC Object Class	INT Ref
Bank Name		7 pt Medium U/L Italics Black. The use of a larger point size, capitals and/or spacing will depend on area of feature.	<b>SEAARE, C_AGGR</b>	
Barge		6 pt Light U/L Italics Black	NA	Q 53
Baseline		See <a href="#">Territorial Sea</a> - Baseline	NA	
Basin		See <a href="#">Dock</a> . See <a href="#">Oceanographic Features</a> for sea basins. See <a href="#">Lock Basin</a>	NA	
Baths		6 pt Light U/L Black	NA	
Bathymetric Features (canyons, plateaus, trenches etc.)		7 pt Medium U/L Italics Black. The use of a larger point size, capitals and/or spacing will depend on area of feature.	<b>SEAARE</b>	O
Bay, Important (Major section of Sailing Directions). Refer Para 6(g)		7 pt Medium Capitals Italics Black. The use of a larger point size and/or spacing will depend on area of feature.	<b>SEAARE</b>	
Bay, Less important (Bold text in sailing directions). Refer Para 6(g).		7 pt Medium U/L Italics Black. The use of a larger point size, capitals and/or spacing will depend on area of feature.	<b>SEAARE</b>	
Bay, Unimportant (All other cases). Refer Para 6(g).		7 pt Light U/L Italics Black	<b>SEAARE</b>	
Beach (Named)		7 pt Light U/L Black. Spacing may be used for long beaches	<b>COALNE, LNDGRN</b>	
Beacons			Master Object*	Q
	Clearing line	6 pt Medium U/L Black (degrees)	NA	M 2
	Colour text	4 pt Medium Capitals Black	NA	Q 81-83, 102,110
	Consol (description)	6 pt Medium U/L Magenta	NA	S 13
	Consol (name)	6 pt Medium U/L Black	<b>RDOSTA</b>	
	Description text	6 pt Medium U/L Black	NA	P 3-5 Q 80,101
	In line	6 pt Medium U/L Black	NA	M 1-3
	Leading	6 pt Medium U/L Black	NA	M 1
	Light description	6 pt Medium U/L Black	NA	Q 7-8
	Named or numbered	6 pt Medium U/L Black	Master Object*	Q 10
	Recommended track	6 pt Medium U/L Black (degrees)	<b>RECTRC</b>	M 3
	Refuge	6 pt Medium U/L Black	NA	Q 124
	Transit	6 pt Medium U/L Black (degrees)	NA	M 2
Bearings on Recommended Track		6 pt Medium U/L Black	NA	M 3-4
Benchmark		6 pt Medium U/L Black (Fleet charts only).	<b>CTRPNT</b>	B 23
Berth			<b>BERTHS</b>	
	Numbers	6 pt Medium Magenta (inside circle)	<b>BERTHS</b>	F 19, Q 42
Berth	Letters	6 pt Medium Capitals Magenta (inside circle or rectangle)	<b>BERTHS</b>	
	Name	7 pt Light U/L Black. Spacing may be used for long berths.	<b>BERTHS, SLCONS</b>	

Block - Notices to Mariners	Border text	Refer Annex G	NA	
Boarding Place - Pilot		See <a href="#">Pilot</a> - Boarding Place	<b>PILBOP</b>	T 1
Boat Harbour			<b>HRBFAC</b>	
	Description	6 pt Light U/L Italics Black (only if symbol U 1.1 cannot be used)	NA	
	Named	NA	<b>HRBFAC</b>	
Boat/Ship Lift		See <a href="#">Small Craft</a> - Facility	<b>SMCFAC</b>	G 131
Bollard		NA	<b>MORFAC</b> (Nav 6 only)	G 181
Bombora		7 pt Medium U/L Italics Black	See Water Turbulence	
Border Information		Refer <a href="#">Annex B</a>		A
Bottom Quality		6 pt Light U/L Italics Black (half space between natures of surface).	NA	J 1-12, 20,30-39
Boulders			<b>LNDMRK, UWTROC</b>	
	Description	6 pt Light U/L Italics Black (for intertidal boulders only).	NA	G 28
	Named	6 pt Medium U/L Black. Intertidal boulder names are to be in Italics	<b>LNDMRK, UWTROC</b>	
Boxed Publications Note		Refer <a href="#">Annex C</a>	NA	A 20
Breaker, Description note (Br)		6 pt Light U/L Italics Black	NA	K 17
Breaks, Description note		6 pt Light U/L Italics Black. 7 pt and/or spacing may be used for large areas.	NA	
Breakwater (Named)		7 pt Light U/L Black. A larger point size and/or medium and/or spacing may be used for important features.	<b>SLCONS</b>	
Bridge			<b>BRIDGE</b>	D 20-24
	Clearance height	See <a href="#">Height above High Water</a> - Vertical Clearance	NA	D 22
	Horizontal Clearance	See <a href="#">Clearance</a> - Horizontal	NA	D 21
	Named	6 pt Light U/L Black. A larger point size and/or Capitals may be used for larger bridges or bridges on large scale charts.	<b>BRIDGE</b>	
	Type of	6 pt Light U/L Black	NA	D 23-24
Building			<b>BUISGL</b>	D 5,6 G 60-98
	Description	6 pt Light U/L Black. 7 pt and/or spacing may be used on large scale charts.	NA	D 6
	Named	6 pt Light U/L Black. 7 pt and/or spacing may be used on large scale charts.	<b>BUISGL</b> . Refer also to associated feature (Yacht Club etc.) for which OBJNAM is populated for the relevant Object Class only.	
Built Up Area		See <a href="#">Town, Important</a>	<b>BUAARE, ADMARE</b>	
Buoys			Master Object*	Q 7,8,11-41,50-71, 130
	Colour text	4 pt Medium Capitals Italics Black	NA	Q 2-5
	Light description	6 pt Medium U/L Italics Black	NA	Q 7-8
	Mooring - light	6 pt Medium U/L Italics Black	NA	Q 41
	Mooring - single point	6 pt Medium Capitals Black	NA	L 12

	Mooring trot - number/letter	6 pt Medium Magenta (inside circle)	<b>BERTHS</b>	Q 42
	Name or number	6 pt Medium U/L Italics Black	Master Object*	Q 11
Buoys	ODAS (description)	6 pt Medium Capitals Italics Black	NA	Q 58
	Private (description)	6 pt Light U/L Italics Black "(priv)"	NA	Q 70
	Radar	6 pt Medium U/L Italics Magenta	NA	S 3.6
	Seasonal	6 pt Light U/L Italics Black e.g. "(Apr-Oct)"	NA	Q 71
	Supplementary (refer CATSPM)	6 pt Light U/L Italics Black	NA	Q 50-53
	Waverider	6 pt Light U/L Italics Black	NA	

<b>C</b>				
<b>Text</b>		<b>Type</b>	<b>S-57 ENC Object Class</b>	<b>INT Ref</b>
Cable Area			<b>CBLARE</b>	
	Description	6 pt Medium U/L Italics Magenta	NA	L 30, 31
	Named	7 pt Medium U/L Italics Magenta. 8 pt, 9 pt and/or spacing may be used for large areas.	<b>CBLARE</b>	
Cables			<b>CBLSUB, CBLOHD</b>	D 26,27 L 30-32
	Legend, land	6 pt Light U/L Black	NA	
	Legend, submarine	6 pt Medium U/L Italics Magenta. 8 pt, 9 pt and/or spacing may be used for cables of greater length.	NA	
	Named (submerged)	6 pt Medium U/L Italics Magenta. 8 pt, 9 pt and/or spacing may be used for cables of greater length.	<b>CBLSUB</b>	
	Overhead	6 pt Medium Black	<b>CBLOHD</b>	
	Transporter etc.	NA	NA	
Canal			<b>CANALS</b>	F 40
	Description	7 pt Light U/L Italics Black	NA	
	Named	7 pt Light U/L Italics Black	<b>CANALS</b>	
Canyon		See <a href="#">Oceanographic Features</a>	<b>SEAARE</b>	
Cape		See <a href="#">Point</a>	<b>LNDRGN</b>	
Cargo Transhipment Area			<b>CTSARE</b>	
	Description	6 pt Medium U/L Italics Magenta	NA	N 64
	Named	6 pt Medium U/L Italics Magenta	<b>CTSARE</b>	
Causeway			<b>CAUSWY</b>	F 3
	Description	6 pt Light U/L Black	NA	F 3
	Named	6 pt Light U/L Black	<b>CAUSWY</b>	
Cautionary Notes (in title)		Refer <a href="#">Annex D</a> . These Notes must be block justified to 50mm.	NA	A 16
Cay (above HWL)			<b>LNDARE</b>	
	Description	7 pt Light U/L Black	NA	
	Named	7 pt Light U/L Black	<b>LNDARE</b>	G 3
Cay (intertidal)			<b>SEAARE</b>	
	Description	7 pt Light U/L Italics Black	NA	G 3
	Named	7 pt Light U/L Italics Black	<b>SEAARE</b>	
Channel, Important (Major section or bold text in Sailing Directions). Refer Para 6(g)		7 pt Medium Capitals Italics Black. A larger point size and/or spacing may be used for features covering large areas.	<b>SEAARE</b>	
Channel, Less Important (Listed in Sailing Directions). Refer Para 6(g)		7 pt Medium U/L Italics Black. A larger point size and/or spacing may be used for features covering large areas.	<b>SEAARE</b>	
Channel, Unimportant (All other cases). Refer Para 6(g)		7 pt Light U/L Italics Black. A larger point size and/or spacing may be used depending on the size of the feature.	<b>SEAARE</b>	
Chart Crest		NA	NA	A 12
Chart Dimensions		Refer <a href="#">Annex B</a>	NA	A 8
Chart, Marginal		Refer <a href="#">Annex B</a>	NA	A

Information				
Chart Number			NA	
	Aus Charts	Refer <a href="#">Annex B</a>	NA	A 1
	INT Charts	24 pt Medium Capitals Magenta	NA	A 3
Chart Reference			NA	
	Adjoining chart	9 pt Medium U/L Magenta	NA	A 19
	Larger scale chart (with limits)	9 pt Medium U/L Magenta	NA	A 18
	Larger scale chart (no limits)	9 pt Medium U/L Magenta	NA	
	Plan on another sheet	9 pt Medium U/L Magenta	NA	
	Plan on same sheet	9 pt Medium U/L Magenta	NA	A 18
Chart Scale		Refer <a href="#">Annex D</a>	NA	A 13
Chart - Title		Refer <a href="#">Annex D</a>	NA	A 10
Checkpoint		See <a href="#">Custom Office</a>	<b>CHKPNT</b>	
Chimney			<b>LNDMRK</b>	
	Description	6 pt Light U/L Black. Used for annotation of position circle or indication of multiple objects only.	NA	E 22
	Named	6 pt Light U/L Black	<b>LNDMRK</b>	
Church			<b>BUISGL, LNDMRK</b>	E 10-18
	Description	6 pt Light U/L Black.	NA	E 10,18
	Named	6 pt Light U/L Black.	<b>BUISGL, LNDMRK</b>	
City			<b>BUAARE, ADMARE</b>	D 1-4
	On Large/Medium scale charts	See <a href="#">Town, Important</a>	<b>BUAARE, ADMARE</b>	D 1-3
	On Small scale charts	7 pt Medium Capitals Black	<b>BUAARE</b>	D 3,4
	On INT Charts	7 pt Medium U/L Black	<b>BUAARE</b>	D 3,4
Clearance			NA	
	Vertical	See <a href="#">Height above High Water - Vertical Clearance</a>	NA	D 20
	Horizontal	6 pt Medium Black	NA	D 21
Clearing Bearing		See <a href="#">Transit Bearing</a>	NA	M 2
Cliff			<b>COALNE, SLOTOP</b>	C 3
	Description	6 pt Light U/L Black. The use of 7 or 8 pt and/or spacing will depend on length of feature.	NA	
	Named	6 pt Light U/L Black. The use of 7 or 8 pt and/or spacing will depend on length of feature.	<b>COALNE, SLOTOP</b>	
Coastal Relief Feature		See <a href="#">Beach (Named)</a> , <a href="#">Cliff</a> , <a href="#">Marsh</a> , <a href="#">Shingly Shore</a> , <a href="#">Stony Shore</a>	<b>COALNE, LNDRGN, SLOTOP, SLOGRD</b>	
Coastguard Station			<b>CGUSTA</b>	
	Description (CG)	6 pt Light Capitals Black	NA	T 10,11
	Named	6 pt Light U/L Black	<b>CGUSTA</b>	
Company (Named)		6 pt Light U/L Black	<b>BUISGL, PRDARE, C_AGGR</b>	
Compass Rose Degrees		7 pt Light Magenta	NA	B 70
Contiguous Zone - Seaward Limit		NA	NA	N 44
Consol Beacon		See <a href="#">Beacons</a> - Consol	NA	S 13

Conspicuous Features			Relevant S-57 Object Class	E 2
	Description	6 pt Medium Capitals Black. If the text size for the feature is defined in this document as larger than 6 pt, the capitals text must be shown in that point size. This applies to all features including buildings, mountains etc.	NA	E 2
	Named	6 pt Medium Capitals Black. If the text size for the feature is defined in this document as larger than 6 pt, the capitals text must be shown in that point size. This applies to all features including buildings, mountains etc.	Relevant S-57 Object Class	
Continental Shelf		6 pt Medium U/L Italics Magenta	NA	N 46
Contour Value			NA	C 10,12 I 30,31
	Depth	5 pt Light Black	NA	I 30,31
	Land	4 pt Light Black	NA	C 10,12
Control Point			<b>CTRPNT, LNDELV</b>	B 20-24
	Description	6 pt Medium Black	NA	
	Named	6 pt Medium Black	<b>CTRPNT, LNDELV</b>	
Conveyor			<b>CONVYR</b>	D 25
	Description	6 pt Light U/L Black	NA	
	Named	NA	<b>CONVYR</b>	
Copyright Note		Refer <a href="#">Annex C</a>	NA	A 5
Coral Reef (Named)		See <a href="#">Reef - Named</a>	<b>SBDARE, SEAARE, C_AGGR</b>	
Corner Co-ordinates		Refer <a href="#">Annex B</a>		A 9
Cove		See <a href="#">Bay</a>	<b>SEAARE</b>	
Crane			<b>CRANES</b>	F 53
	Description	6 pt Light U/L Black	NA	F 53
	Named	NA	<b>CRANES</b>	
Creek		See <a href="#">River</a>	<b>RIVERS, SEAARE</b>	C 20,21
Crown Copyright		Refer <a href="#">Annex C</a>	NA	A 5
Current			<b>CURENT</b>	H 42,43
	Meter	6 pt Light U/L Italics Black	NA	Q 59
	Named	7 pt medium Capitals Italics Black. The use of 8 pt and/or spacing is dependant on the area of the current.	<b>CURENT</b>	
	Rates and/or seasons	6 pt Light U/L Italics Black. For rates of named current use Medium text	NA	H 43
	Reference to Note	7 pt Light U/L Italics Black. For reference to named current use Medium text. For "Tidal Streams and Currents" see <a href="#">Tidal Streams and Currents – Reference to Note</a> .	NA	
Customs Limit		NA	<b>CUSZNE</b>	N 48
Custom Office (Named only)		6 pt Light U/L Black. 7 pt may be used on large scale charts.	<b>BUISGL</b>	F 61
Cutting		NA	NA	D 14

<b>D</b>				
Text		Type	S-57 ENC Object Class	INT Ref
Dam			<b>DAMCON, LAKARE</b>	F 43,44
	Description	6 pt Light U/L Black.	NA	F 44
	Named	NA	<b>DAMCON, LAKARE</b>	
Dangers, Intertidal Comment		6 pt Light U/L Italics Black	NA	
Danger Zone (Buoy)		6 pt Light Capitals Italics Black	NA	Q 50
Daymark		NA	<b>DAYMAR</b>	Q 101,102
Deep Water Route			<b>DWRCTL, DWRTPT, C_AGGR</b>	M 27
	Description	8 pt Medium Capitals Italics Magenta	NA	M 27
	Named	8 pt Medium U/L Italics Magenta	<b>DWRCTL, DWRTPT, C_AGGR</b>	
Degaussing Range		6 pt Medium U/L Italics Magenta	NA	N 25
Depth Contour		See <a href="#">Contour Value</a> - Depth	NA	I 30,31
Depth, Maintained		See <a href="#">Dredged Area</a> - Maintained	NA	I 23
Depths in Metres		Refer <a href="#">Annex B</a>	NA	
Descriptive Text (On land)		6 pt Light U/L Black. 7 pt and/or spacing may be used for large areas	NA	
Designated Shipping Area (DSA)	Reference to Note	7 pt Medium Italics Magenta - "DSA (see Note)"	<b>ADMARE</b>	
Diffuser		See Obstruction	NA	L 43
Dimension, Chart		Refer <a href="#">Annex B</a>	NA	A 8
Direction Light		See <a href="#">Light</a> - Direction	Master Object*, <b>LIGHTS</b>	P 30
Directional Radiobeacon		No longer depicted on Australian nautical charts	NA	S 11
Dish Aerial		NA	<b>LNDMRK</b>	E 31
Distance Mark		6 pt Light L Black. 6 pt Light L Italics Magenta is to be used if the mark is in the water.	NA	F 40
District Name		7 pt Medium Capitals Black. The use of a larger point size and/or spacing will depend on area of feature.	<b>LNDRGN, ADMARE</b>	
Disused (Jetty, Wharf, Platform)	Description	See <a href="#">Ruins</a>	NA	F 33
Dock				F 25-28
	Floating	7 pt Light U/L Italics Black	<b>FLODOC</b>	F 26
	Graving (dry dock)	6 pt Light U/L Black. 7 pt may be used on large scale charts.	<b>DRYDOC</b>	F 25
	Wet (tidal basin)	6 pt Light U/L Italics Black. 7 pt may be used on large scale charts.	<b>DOCARE</b>	F 28
	Wet (non-tidal basin)	6 pt Light U/L Italics Black. 7 pt may be used on large scale charts.	<b>DOCARE</b>	F 27
Dolphin			<b>MORFAC</b>	F 20
	Description	6 pt Medium U/L Black	NA	F 20
	Named	NA	<b>MORFAC</b>	
Drainage Feature		6 pt Light U/L Black	NA	
Dredged Area			<b>DRGARE</b>	I 21-23

Dredged Area	Maintained	7 pt Medium U/L Italics Black. The use of Capitals and/or spacing will depend on area of feature.	NA	I 23
	Not Maintained	7 pt Medium U/L Italics Black. The use of Capitals and/or spacing will depend on area of feature.	NA	I 21-22
Dredging Area		7 pt Medium U/L Italics Magenta	NA	N 63
"Dries"	Description	6 pt Light U/L Italics Black. 7 or 8 pt and/or spacing may be used for large drying areas	NA	
Drying Heights		See <a href="#">Sounding</a>	<b>SOUNDG</b>	I 15
Dumping Ground (Explosives, Chemical Waste)		6 pt Medium U/L Black. The use of a larger point size and/or spacing will depend on area of feature.	NA	N 23-24
Dunes, Sand			<b>LNDRGN, SLOGRD</b>	C 8
	Description	6 pt Light U/L Black. 7 pt and/or spacing may be used for large areas	NA	C 8
	Named	6 pt Light U/L Black. 7 pt and/or spacing may be used for large areas	<b>LNDRGN, SLOGRD</b>	
Dyke/Levee		NA	NA	F 1



<b>E</b>				
Text		Type	S-57 Object Class	INT Ref
Ebb Tide Stream - Rates		See <a href="#">Tidal Stream</a> - Rates	NA	H 40,41
Edition number – text and number		Refer <a href="#">Annex B</a>	NA	
Elevations		6 pt Medium Black	<b>LNDELV</b>	C 11
Embankment		NA	NA	D 15
Entry Prohibited		See <a href="#">Prohibited Area</a>	NA	N 31
Environmentally Sensitive Sea Area (ESSA)	Reference to Note	7 pt Medium Italics Green - "ESSA (see <i>GBRMP Note</i> )"	<b>RESARE</b>	N 22
Existence Doubtful (ED)		6 pt Light Capitals Italics Black	NA	I 1
Exclusive Economic Zone		8 pt Medium Capitals Italics Magenta	NA	N 47
Explanatory Notes (Title - Legend Information)		Refer <a href="#">Annex D</a>	NA	A 11

<b>F</b>				
<b>Text</b>		<b>Type</b>	<b>S-57 ENC Object Class</b>	<b>INT Ref</b>
Factory		See <a href="#">Company (Named)</a>	<b>BUISGL, PRDARE, C_AGGR</b>	
Fairway		NA. See also <a href="#">Shipping Fairway</a>	<b>FAIRWY, SEAARE</b>	
Fence		NA	NA	
Ferry				M 50,51
	Cable	6 pt Light U/L Black	NA	M 51
	Free Moving	NA	NA	M 50
	Terminal	6 pt Light U/L Black	<b>HRBFAC</b>	
Firing Danger area		See <a href="#">Military Exercise Area</a>	NA	N 30
Fishery Zone		NA	NA	N 45
Fishing Ground		NA	NA	
Fish Haven		6 pt Light U/L Italics Black	NA	K 46
Fish Traps		6 pt Light U/L Italics Black	NA	K 45
Fishing Harbour		NA	<b>HRBFAC</b>	F 10
Fishing Prohibited		NA	NA	N 21
Fishing Stake		NA	NA	K 44.1
Flagstaff		NA	<b>LNDMRK</b>	E 27
Flare Stack		NA		E 23, L 11
	At sea	6 pt Light U/L Black	NA	L 11
	On land	NA	<b>LNDMRK</b>	E 23
Floating Barrier		See <a href="#">Oil Barrier</a>	NA	F 29
Flood Tide Stream - Rates		See <a href="#">Tidal Stream</a> - Rates	NA	H 40
Floodlight/Floodlit		6 pt Light U/L Black	NA	P 63
Fog Signal				R
	At buoy	6 pt Medium U/L Italics Black	Master Object*	R
	At buoy (automatic)	6 pt Medium U/L Italics Black	Master Object*	R
	At light	6 pt Medium U/L Black	Master Object*	R
	At light vessel	6 pt Medium U/L Black	Master Object*	R
	At separate installation	6 pt Light U/L Black	Master Object*	R
	Independent	6 pt Light U/L Black	<b>FOGSIG</b>	R
Footbridge		See <a href="#">Bridge</a>	<b>BRIDGE</b>	D a
<a href="#">Former Mined Area</a>	<a href="#">Reference to Note</a>	See <a href="#">Note</a> – Heading and reference on paper chart	NA	
Fortified Structure		NA	<b>FORSTC</b>	E 34
Foul		6 pt Light U/L Italics Black. 7 or 8 pt and/or spacing may be used for large scale charts.	NA	K 31
Fracture Zone		See <a href="#">Oceanographic Features</a>	<b>SEAARE</b>	
Free Port Area		NA	NA	

<b>G</b>				
<b>Text</b>		<b>Type</b>	<b>S-57 ENC Object Class</b>	<b>INT Ref</b>
Gate		NA	NA	F 25,27, 41-44
Gas Field		See <a href="#">Oil Field</a>	<b>OSPARE</b>	L 1
Gas Pipeline		See <a href="#">Pipeline</a> - Gas	<b>PIPSOL</b>	L 40
Gas Works		See <a href="#">Refinery</a>	<b>PRDARE</b>	
Glacier		See <a href="#">Ice Area</a>	<b>ICEARE</b>	C 25
Graticule Latitudes, Longitudes		Refer <a href="#">Annex B</a> and INT 2	NA	INT 2
Graving Dock (Dry)		See <a href="#">Dock</a> - Graving (dry dock)	<b>DRYDOC</b>	F 25
Gridiron				F 24
	Description	6 pt Light U/L Italics Black	NA	F 24
	Named	NA	NA	
Groynes				F 6
	Description	6 pt Light U/L Black. 7 pt may be used for large scale charts	NA	
	Named	6 pt Light U/L Black. 7 pt may be used for large scale charts	<b>SLCONS</b>	
Gulf		See <a href="#">Bay</a>	<b>SEAARE</b>	

<b>H</b>				
<b>Text</b>		<b>Type</b>	<b>S-57 ENC Object Class</b>	<b>INT Ref</b>
Harbour, Important (Major section or bold text in Sailing Directions). Refer Para 6(g)		7 pt Medium Capitals Italics Black. A larger point size and/or spacing may be used for large areas or on large scale charts.	<b>HRBARE, ADMARE</b>	
Harbour, Less Important (Listed in Sailing Directions). Refer Para 6(g)		7 pt Medium U/L Italics Black. A larger point size and/or spacing may be used for large areas or on large scale charts.	<b>HRBARE, ADMARE</b>	
Harbour, Unimportant (All other cases). Refer Para 6(g)		7 pt Light U/L Italics Black. A larger point size and/or spacing may be used depending on the area of the feature.	<b>HRBARE, ADMARE</b>	
Harbour Limit		7 pt Medium U/L Italics Magenta. 8 pt and/or spacing may be used for long limits	NA	N 49
Harbour Masters Office				F 60
	Description	NA	NA	
	Named	6 pt Light U/L Black	<b>BUISGL</b>	
Harbour Police		6 pt Light U/L Black	NA	U 31
Headland		See <a href="#">Point</a>	<b>LNDRGN</b>	
Health Office			<b>BUISGL</b>	F 62.1
	Description	NA	NA	F 62.1
	Named	6 pt Light U/L Black	<b>BUISGL</b>	
Height above Chart Datum		See <a href="#">Intertidal Features</a>	NA	
Height above High Water				
	Land, Islands	6 pt Medium Black	NA	K 10
	Land, known	See <a href="#">Elevations</a>	NA	C 11
	Top of Structure	6 pt Medium Black	NA	E 4
	Tree top	6 pt Medium Black	NA	C 14
	Vertical Clearance	6 pt Medium Black.	NA	D 20,22-25,27,28
	Safe Vertical Clearance	6 pt Medium Magenta	NA	D 26
Height of Structure above Ground Level		6 pt Medium Black	NA	E 5
Helipad				
	Description	6 pt Light U/L Black	NA	
	Named	6 pt Light U/L Black	<b>AIRARE</b>	
Highway		See <a href="#">Road - Named</a>	<b>ROADWY</b>	D 10
Hills		7 pt Medium U/L Black. The use of a larger point size, Capitals and/or spacing will depend on the area and importance of the feature. 6 pt may be used in congested areas.	<b>LNDELV, LNDRGN</b>	
Historic Wreck			<b>WRECKS</b>	N 26
	Description	7 pt Medium U/L Italics Magenta. 6 pt may be used in congested areas.	NA	N 26
	Named	NA	<b>WRECKS</b>	
Horizontal Clearance		See <a href="#">Clearance</a> - Horizontal	NA	D 21

Hospital			<b>BUISGL, C_AGGR</b>	
	Description	6 pt Light U/L Black	NA	F 62.2
	Named	6 pt Light U/L Black	<b>BUISGL, C_AGGR</b>	
Hotel			<b>BUISGL</b>	
	Description	6 pt Light U/L Black	NA	E 1
	Named	6 pt Light U/L Black	<b>BUISGL</b>	
Hulk			<b>HULKES</b>	F 34
	Description	6 pt Light U/L Italics Black	NA	F 34
	Named	6 pt Light U/L Italics Black	<b>HULKES</b>	
Hut		See <a href="#">Building</a>	<b>BUISGL</b>	
Hydrographic terms		See <a href="#">Oceanographic Features</a>	<b>SEAARE</b>	O

I				
Text		Type	S-57 ENC Object Class	INT Ref
Ice Area			<b>ICEARE</b>	N 60
	Glacier (named)	7 pt Medium U/L Black	<b>ICEARE</b>	C 25
	Ice Shelf (named)	8 pt Medium Capitals Black. Spacing may be used in large areas.	<b>ICEARE</b>	N 60
Illuminated		See <a href="#">Floodlight/Floodlit</a>	NA	P 63
Incineration Area		7 pt Medium U/L Italics Magenta	NA	N 65
Incompletely/ Inadequately Surveyed		9 pt Medium U/L Italics Magenta. The use of spacing will depend on area to be covered.	NA	I 25
Inlet		See <a href="#">Bay</a>	<b>SEAARE</b>	
Inset - Title		See <a href="#">Title</a> - Inset	NA	A
Inshore Traffic Zone		See <a href="#">Traffic Zone, Inshore</a>	NA	M 25.1
International Boundary				N 40,41
	On land	7 pt Medium Capitals Black	<b>LNDARE, ADMARE</b>	N 40
	In the sea	7 pt Medium Capitals Italics Magenta	<b>ADMARE</b>	N 41
Intertidal Danger Comments		6 pt Light U/L Black	NA	
Intertidal Features				
	Abbreviated	See <a href="#">Bottom Quality</a>	NA	J
	Description	6 pt Light U/L Italics Black. 7 or 8 pt and/or spacing may be used in large areas.	NA	
Island Group (Name)		8 pt Medium U/L Black. The use of a larger point size, capitals and/or spacing will depend on size and coverage of Island group	<b>LNDRGN, C_AGGR</b>	
Island/Islet Height		See <a href="#">Height above High Water</a> - Land, Islands	NA	K 10
Island/Islet, Important (Major section in Sailing Directions or covering large portion of chart). Refer Para 6(g)		7 pt Medium Capitals Black. The use of a larger point size and/or spacing will depend on the size of the Island.	<b>LNDARE</b>	
Island/Islet, Less Important (Bold text in Sailing Directions). Refer Para 6(g)		7 pt Medium U/L Black. The use of a larger point size and/or spacing will depend on the size of the Island.	<b>LNDARE</b>	
Island/Islet, Unimportant (All other cases). Refer Para 6(g)		7 pt light U/L Black. The use of a larger point size and/or spacing will depend on the size of the feature.	<b>LNDARE</b>	

<b>J</b>				
<b>Text</b>		<b>Type</b>	<b>S-57 ENC Object Class</b>	<b>INT Ref</b>
Jetty			<b>SLCONS</b>	F 14,15
	Description	6 pt Light U/L Black	NA	F 14,15
	Named	6 pt Light U/L Black	<b>SLCONS</b>	
	Ruined	6 pt Light U/L Black	NA	F 33

<b>L</b>				
<b>Text</b>		<b>Type</b>	<b>S-57 ENC Object Class</b>	<b>INT Ref</b>
Lagoon		7 pt Light U/L Italics Black. A larger point size and/or spacing may be used on large scale charts. Medium text may be used for large lagoons.	<b>SEAARE, LAKARE</b>	
Lake, Important (Listed in Sailing Directions). Refer Para 6(g)		7 pt Medium U/L Italics Black. The use of a larger point size, Capitals and/or spacing will depend on the size of the Lake.	<b>LAKARE, SEAARE</b>	
Lake, Unimportant (All other cases). Refer Para 6(g)		7 pt Light U/L Italics Black	<b>LAKARE</b>	C 23
Landing for Boats			<b>SMCFAC</b>	F 17
	Description	6 pt Light U/L Italics Black	NA	F 17
	Named	6 pt Light U/L Italics Black	<b>SMCFAC</b>	
Landing Ground			<b>AIRARE</b>	D 17
	Description	6 pt Light U/L Black	NA	D 17
	Named	6 pt Light U/L Black	<b>AIRARE</b>	
Landing Stairs		6 pt Light U/L Black	<b>NA</b>	U 7
Landmark (Conspicuous)		See <a href="#">Conspicuous Features</a>	<b>LNDMRK</b>	E 2
Landmark (Not conspicuous)			<b>LNDMRK</b>	E
	Description	6 pt Light U/L Black	<b>NA</b>	E 1,10,18, 20,24,30, 32,33
	Named	6 pt Light U/L Black	<b>LNDMRK</b>	
Lash		See <a href="#">Dolphin</a>	NA	
Launching Facilities		See <a href="#">Ramp</a>	NA	
Lava Flow		NA	NA	C 26
Leading Line			NA	M 1 P 20,21
	Marked by Beacons	6 pt Medium U/L Black	NA	M 1
	Marked by Lights	6 pt Medium U/L Black	NA	P 20-21
	Marked by Landmarks	6 pt Medium U/L Black	NA	
Ledge		See <a href="#">Reef - Named</a>	<b>SBDARE, SEAARE</b>	
Lifeboat			NA	T 12,13
	Lying at mooring	NA	NA	T 13
	Station	NA	NA	T 12
Light Beacons		See <a href="#">Beacons</a> - Light Description	Master Object*	P 4, Q 7
Light Buoy		See <a href="#">Buoys</a> - Light Description	Master Object*	Q 7
Light Float			<b>LITFLT</b>	Q 30,31
	Light Description	6 pt Medium U/L Italics Black	NA	Q 30,31
	Named	6 pt Medium U/L Italics Black	<b>LITFLT</b>	
Light House			<b>LNDMRK, BUISGL</b>	P 1
	Description	6 pt Medium U/L Black	NA	P 1
	Named	6 pt Medium U/L Black	<b>LNDMRK, BUISGL</b>	
Light Sector Colours		6 pt Medium U/L Black	NA	P 11
Light Vessel			<b>LITVES</b>	P 6
	Description	6 pt Medium U/L Italics Black	NA	P 6
	Named	6 pt Medium U/L Italics Black	<b>LITVES</b>	



Light			LIGHTS	P
	Aero	6 pt Medium U/L Black	NA	P 60
	Air Obstruction (high intensity)	6 pt Medium U/L Black	NA	P 61.1
	Air Obstruction (low intensity)	6 pt Light U/L Black	NA	P 61.2
	Daytime	6 pt Light U/L Black (for "Day")	NA	P 51
	Description	6 pt Medium U/L Black	NA	P 10-14, 16,20.3, 22-23
	Direction	6 pt Medium U/L Black	NA	P 30
	Extinguished	6 pt Light U/L Black	NA	P 55
	Faint Sector	6 pt Medium U/L Black	NA	P 45
	Fog	6 pt Light U/L Black (for "Fog")	NA	P 52
	Fog Detector	6 pt Medium U/L Black	NA	P 62
	Horizontally Disposed	6 pt Light U/L Black (for "(hor)")	NA	P 15
	In Line (not leading)	See <a href="#">Leading Line</a>	NA	M 1 P 20,21
	Intensified	6 pt Medium U/L Black	NA	P 46
	Landing	NA	NA	
	Leading	See <a href="#">Leading Line</a>	NA	M 1 P 20,21
	Moire Effect	6 pt Medium U/L Black	NA	P 31
	Morse Code	6 pt Medium U/L Black	NA	P 10.9
	Named	6 pt Medium U/L Black	Master Object*	P 16,20.1
	Obscured	6 pt Medium U/L Black	NA	P 43
	Occasional	6 pt Light U/L Black (for "(occas)")	NA	P 50
	Private	6 pt Light U/L Black (for "(priv)")	NA	P 65
	Strip	NA	NA	P 64
	Subsidiary	6 pt Medium U/L Black	NA	P 42
	Supplementary (description)	6 pt Light U/L Black	NA	
	Temporary	6 pt Light U/L Black (for "(temp)")	NA	P 54
	Unwatched	6 pt Light U/L Black (for "(U)")	NA	P 53
	Vertically Disposed	6 pt Light U/L Black (for "(vert)")	NA	P 15
Local Magnetic Anomaly				B 82
	Reference to Note	7 pt Medium U/L Magenta	NA	B 82.2
	Deviation	12 pt Medium Numeral Magenta. Used only where magnitude and extent are known.	NA	B 82.1
Locality Names		See <a href="#">Town</a>	<b>BUAARE, LNDRGN</b>	
Lock Basin			<b>LOCBSN</b>	
	Description	6 pt Light U/L Italics Black	NA	F 41.1
	Named	NA	<b>LOCBSN</b>	
Log Pond			<b>LOGPON</b>	N 61
	Description	6 pt Light U/L Italics Black	NA	N 61
	Named	NA	<b>LOGPON</b>	
Lookout			<b>LNDRGN, LNDMRK</b>	
	Description	6 pt Light U/L Black	NA	
	Named	NA	<b>LNDRGN, LNDMRK</b>	

<b>M</b>				
<b>Text</b>		<b>Type</b>	<b>S-57 ENC Object Class</b>	<b>INT Ref</b>
Magnetic Anomaly		See <a href="#">Local Magnetic Anomaly</a> - Deviation	NA	B 82
Magnetic Variation			NA	
	In Title (plans)	8 pt Medium U/L Black. Heading "Mag Var" to be 8 pt Bold U/L Black.	NA	A
	Within Rose	7 pt Medium U/L Magenta	NA	B 70
	On Isogonals	8 pt Medium Capitals Magenta	NA	B 71
Maintained Depth		See <a href="#">Dredged Area</a> - Maintained	<b>DRGARE</b>	I 23
Mangroves, Legend		See <a href="#">Trees, Legend</a>	NA	C 30
Marina (Named)		7 pt Light U/L Black	<b>HRBFAC</b>	U 1.1
Marine Farms			<b>MARCUL</b>	K 47,48
	Description	6 pt Light U/L Italics. Colour will depend on colour of boundary. 7 pt and/or spacing may be used in large areas.	NA	K 47,48
	Named	NA	<b>MARCUL</b>	
	Reference to Note	8 pt Medium U/L Italics. Smaller point sizes may be used for small areas.	NA	
Marine Park		See <a href="#">ESSA</a> , <a href="#">MR</a> and <a href="#">PSSA</a>	<b>RESARE</b>	N 22
Marine Reserve (MR)	Reference to Note	7 pt Medium Italics Green - "MR (see GBRMP Note)"	<b>RESARE</b>	N 22
Maritime Area			Various	N
	General (implying no physical obstructions)	7 pt Medium U/L Italics Magenta. The use of a larger point size and/or spacing will depend on size of area.	Various	N 1.2
	General (implying physical obstructions)	7 pt Medium U/L Italics Black. The use of a larger point size and/or spacing will depend on size of area.	Various	N 1.1
	Minor	6 pt Light U/L Italics (colour will depend on the colour of the boundary)	Various	
Mark Coloured or White			<b>DAYMAR, BCNSPP</b>	Q 101
	Description	6 pt Medium U/L Black	NA	Q 101
	Named	NA	<b>DAYMAR, BCNSPP</b>	
Marker Ship			<b>BOYSPP</b>	Q 52
	Description	6 pt Light U/L Italics Black	NA	Q 52
	Named	6 pt Light U/L Italics Black	<b>BOYSPP</b>	
Marsh			<b>COALNE, LNDGRN</b>	C 33
	Description	6 pt Light U/L Black. 7 pt and/or spacing may be used for large areas or on large scale charts.	NA	C 33
	Named	6 pt Light U/L Black. 7 pt and/or spacing may be used for large areas or on large scale charts.	<b>COALNE, LNDGRN</b>	
Mast, Wreck		See <a href="#">Wreck</a> - Mast	NA	K 25
Mast, Radio/Radar/TV			<b>LNDMRK</b>	E 28,30.1
	Description	6 pt Light U/L Black. Used for annotation of position circle or indication of multiple objects only.	NA	E 30.1

	Named	6 pt Light U/L Black	<b>LNDMRK</b>	
Measured Distance		6 pt Light U/L Black	NA	Q 122
Middle Ground		7 pt Medium U/L Italics	NA	
Military Base/Area (on land)		7 pt Light U/L Black. 8 pt may be used on large scale charts. 6 pt may be used in congested areas.	<b>RESARE</b>	
Military Exercise Area (In water)			<b>MIPARE</b>	N 30,32,33
	Description	8 pt Medium U/L Italics Magenta. 7 pt may be used on small scale charts and congested areas.	NA	N 30,32,33
	Named	NA	<b>MIPARE</b>	
Military Waters		8 pt Medium U/L Italics Magenta	<b>RESARE</b>	N 31
Mine (Named)		NA	<b>PRDARE</b>	E 36
Minefield			<b>RESARE</b>	N 34
	Description	7 pt Medium U/L Italics Magenta	NA	N 34
	Named	NA	<b>RESARE</b>	
Mole (Named)		6 pt Light U/L Black. 7 pt may be used for large scale charts.	<b>SLCONS</b>	F 12
Monument		NA	<b>LNDMRK</b>	E 24
Mooring Berths		6 pt Medium Magenta	<b>BERTHS</b>	Q 42
Mooring Buoy, Light		See <a href="#">Buoys</a> - Mooring - light	<b>MORFAC</b>	Q 41
Moorings, Small Craft		6 pt Medium U/L Italics Black	<b>ACHARE</b>	Q 44
Mooring, Trot Number		See <a href="#">Trot Mooring Number</a>	<b>BERTHS</b>	Q 42
Mountains		See <a href="#">Hills</a>	<b>LNDELV, LNDRGN</b>	
Mountain Ranges		6 pt Medium Capitals Black. A larger point size and/or spacing may be used depending on extent of range.	<b>LNDRGN</b>	

<b>N</b>				
<b>Text</b>		<b>Type</b>	<b>S-57 ENC Object Class</b>	<b>INT Ref</b>
	Narrows	See <a href="#">Channel</a>	<b>SEARE</b>	
	National Territory	NA	<b>ADMARE</b>	
	National Park, Nature Reserve (Bird, Game, Seal, Fish, Ecological), on Land	7 pt Medium U/L Black. A larger point size and/or spacing may be used in large areas. For water areas see Marine Park.	<b>LNDRGN, RESARE</b>	
	Nature of Seabed	See <a href="#">Bottom Quality</a>	NA	J
	Naval Base	7 pt Light U/L Black. 8 pt may be used on large scale charts. 6 pt may be used in congested areas.	<b>HRBFAC</b>	
	Naval Exercise Area			
	No boundaries	8 pt Medium U/L Italics Black	<b>MIPARE</b>	
	Within boundaries	7 pt Medium U/L Italics Magenta. A larger point size, Capitals and/or spacing may be used in large areas.	<b>MIPARE</b>	N 30-34
	Naval Waters	See <a href="#">Military Waters</a>	<b>RESARE</b>	N 31
	New Edition Text and Date	Refer <a href="#">Annex B</a>	NA	A 6
	Notes, Cautionary	Refer <a href="#">Annex D</a> . These Notes must be block justified to 50mm.	NA	A 16
	Note		NA	
	Heading and reference on face of chart	8 pt Medium U/L. Capitals and/or spacing may be used depending on importance of area of interest. For water features use Italics; shown in Black if subject matter is of a permanent physical nature and an obstruction to surface navigation, or shown in Magenta if subject matter is of non-permanent or intangible nature. For (see Note) regarding Leading Lines, use 6 pt Light U/L Black. For (see Note) regarding Recommended Tracks and Preferred Routes, see <a href="#">Recommended Track</a> – Reference to Note. For reference in relation to currents, see <a href="#">Current</a> - Reference to Note. For reference in relation to tidal heights, streams and currents, see <a href="#">Tidal Heights</a> – Reference to Note; and <a href="#">Tidal Streams and Currents</a> – Reference to Note. For references relating to Marine Protected Areas and Designated Shipping Areas, see <a href="#">ESSA</a> , <a href="#">PSSA</a> , <a href="#">MR</a> and <a href="#">DSA</a> . For (see Note) relating to marine farms, see <a href="#">Marine Farms</a> – Reference to Note.	NA	
	Related Publications	Refer <a href="#">Annex C</a>	NA	A 20
	Notices to Mariners		NA	
	Block, Border text	Refer <a href="#">Annex G</a>	NA	
	Legend and Numbers	Refer <a href="#">Annex B</a>	NA	A 7
	Number, Chart	Refer <a href="#">Annex B</a>	NA	A 1

<b>O</b>				
Text		Type	S-57 ENC Object Class	INT Ref
Observation Spot		6 pt Light U/L Black	NA	B 21
Observatory		See <a href="#">Building</a>	<b>BUISGL</b>	
Obstruction			<b>OBSTRN</b>	K 40-43 L 20-23,43
	Description	6 pt Medium U/L Italics Black. Obstructions that are always dry (wells) are to be in upright text.	NA	K 40-43 L 20-23,43
	Named	6 pt Medium U/L Italics Black. Obstructions that are always dry (wells) are to be in upright text.	<b>OBSTRN</b>	
Occasional Light		See <a href="#">Light</a> - Occasional	Master Object *	P 50
Ocean			<b>SEAARE</b>	
	Names	24 pt Medium Capitals Italics Black. The use of various point sizes and/or spacing will depend on size of area.	<b>SEAARE</b>	
	Current Rates	See <a href="#">Current</a> - Rates	NA	H 43
Oceanographic Features		Medium Italics Black. The use of Capitals, spacing and point size (minimum 7 pt) will depend on size of feature and its importance.	<b>SEAARE</b>	
ODAS Buoys		See <a href="#">Buoys</a> , ODAS	Master Object *	Q 58
Offshore Production Area		NA	<b>OSPARE</b>	
Offshore Rig, Production Platform (Named)		6 pt Medium U/L Black	<b>OFSPLF</b>	L 2,10-17
Offshore Safety Zone		NA	NA	L 3
Oil Barrier			NA	F 29
	Description	6 pt Medium U/L Italics. Black for floating oil barrier and Magenta for oil retention barrier (high pressure pipe).	NA	F 29
	Named	NA	NA	
Oil Field		7 pt Light U/L Italics Black. The use of spacing will depend on size of area.	<b>OSPARE</b>	L 1
Oil Pipeline		See <a href="#">Pipeline</a> - Oil	NA	L 40
Outfall		6 pt Light U/L Italics Black	NA	L 41
Overhead Pipe			NA	D 28
	Description	6 pt Light U/L Black	NA	D 28
	Named	NA	NA	
Oyster Beds			<b>MARCUL</b>	
	Description	6 pt Light U/L Italics Black	NA	K 48
	Named	NA	<b>MARCUL</b>	

<b>P</b>				
<b>Text</b>		<b>Type</b>	<b>S-57 ENC Object Class</b>	<b>INT Ref</b>
Particularly Sensitive Sea Area (PSSA)	Reference to Note (along boundary)	7 pt Medium Italics Green – e.g. "PSSA (see GBRMP Note)"	RESARE	N 22
Passage		See <a href="#">Channel</a>	SEAARE	
Patches		See <a href="#">Reef - Named</a>	SEAARE	
Peak		See <a href="#">Hills</a>	LNDELV, LNRGN	
Pearl Culture		See <a href="#">Shellfish Beds</a>	MARCUL	K 47
Peninsula		See <a href="#">Point</a>	LNRGN	
Pier		See <a href="#">Jetty</a>	SLCONS	F 14
Piles/Piling			PILPNT, (MORFAC)	F 22
	Description	6 pt Light U/L Black	NA	F 22
	Named	NA	PILPNT, (MORFAC)	
Pilot				
	Boarding Place name or Note	6 pt Medium U/L Italics Magenta	PILBOP	T 1
	Office Lookout	6 pt Light U/L Black	NA	T 2
	Office (pilots)	6 pt Light U/L Black	NA	T 3
	Station	6 pt Medium U/L Black	NA	
Pilotage Area		7 pt Medium U/L Italics Magenta	ADMARE	N 49
Pilotage service at Port (pilots)		6 pt Medium U/L Magenta	NA	T 4
Pipeline (On land)		NA	NA	D 29
Pipeline (In water)				L 40-44
	Areas	6 pt Light U/L Italics. The use of 7 or 8 pt and/or spacing will depend on size of area. Magenta is to be used for supply pipelines.	NA	L 40.2,41.2
	Area, named	NA	PIPARE	
	Buried	6 pt Medium U/L Italics. Magenta is to be used for supply pipelines.	NA	L 42
	Disused	NA	NA	L 44
	Gas	6 pt Medium U/L Italics Magenta. The use of 7 or 8 pt and/or spacing will depend on length of pipeline.	NA	L 40.1
	Intake, Outfall, Sewer, Water	6 pt Light U/L Italics	NA	L 40.1,41.1
	Named	NA	PIPSOL	
	Oil	6 pt Medium U/L Italics Magenta. The use of 7 or 8 pt and/or spacing will depend on length of pipeline.	NA	L 40.1
Pipeline (Overhead)		See <a href="#">Overhead Pipe</a>	NA	D 28
Plan				
	Reference to	9 pt Medium U/L Magenta. Capitals may be used for large plan limits or if space permits.	NA	A 18
	Title	See <a href="#">Title</a> - Plan	NA	
Plateau				
	On Land	See <a href="#">Mountain Ranges</a>	LNRGN	
	Oceanographic	See <a href="#">Oceanographic Features</a>	SEAARE	

Point, Important (Major section of Sailing Directions). Refer Para 6(g)		9 pt Medium U/L Black. Capitals should only be used in exceptional circumstances. Larger point sizes and/or spacing may be used for large areas.	<b>LNDRGN</b>	
Point, Less Important (Bold text in Sailing Directions). Refer Para 6(g)		8 pt Medium U/L Black	<b>LNDRGN</b>	
Point, Unimportant (All other cases). Refer Para 6(g)		7 pt Light U/L Black	<b>LNDRGN</b>	
Pontoon			<b>PONTON</b>	F 16
	Description	6 pt Light U/L Italics Black	NA	F 16
	Named	NA	<b>PONTON</b>	
Port Authority/Control				
	Description	6 pt Light U/L Black	NA	
	Named	6 pt Light U/L Black	<b>BUISGL</b>	
Port Limit		7 pt Medium U/L Italics Magenta. The use of 8 pt, Capitals and/or spacing will depend on area covered.	<b>HRBARE</b>	N 49
Position				
	Approximate	6 pt Light Italics Black	NA	B 7
	Doubtful	6 pt Light Italics Black	NA	B 8
Post		See <a href="#">Piles/Piling</a> . For submerged posts see <a href="#">Obstruction</a> .	NA	F 22 K 43
Post Office		NA	NA	F 63
Power Cable				
	Overhead	See <a href="#">Cables</a> - Overhead	NA	D 26,27
	Submarine	See <a href="#">Cables</a> - Legend, submarine	<b>CBLSUB</b>	L 30-32
Power Station				
	Description	6 pt Light U/L Black	NA	
	Named	6 pt Light U/L Black	<b>BUISGL, PRDARE</b>	
Power, Transmission line		See <a href="#">Cables</a> - Overhead	NA	D 26
Precautionary Area		6 pt Medium U/L Italics Magenta	NA	M 16,24
Preferred Route				
	Description	7 pt Medium U/L Italics Black	NA	
	Bearings	6 pt Medium Black	NA	M 4
Print Text and Date		Refer <a href="#">Annex B</a>	NA	
Production Platform		See <a href="#">Offshore Rig, Production Platform</a>	<b>OFSPLF</b>	L 2
Prohibited Anchorage		NA	<b>RESARE</b>	N 20
Prohibited Area		7 pt Medium U/L Italics Magenta. A larger point size, Capitals and/or spacing may be used in large areas.	NA	N 2.2,31
Promontory		See <a href="#">Point</a>	<b>LNDRGN</b>	
Publication Details		Refer <a href="#">Annex B</a>	NA	A 4
Pylons				
	Description	6 pt Light U/L Black. 7 pt may be used on large scale charts.	NA	D 26
	Named	NA	<b>PYLONS</b>	

<b>Q</b>				
<b>Text</b>		<b>Type</b>	<b>S-57 ENC Object Class</b>	<b>INT Ref</b>
Quarry				E 35
	Description	6 pt Light U/L Black. Only to be used where no symbol is shown.	NA	
	Named	NA	<b>PRDARE</b>	
Quarantine				
	Anchorage	NA	NA	N 12.8
	Zone (named)	7 pt Medium Capitals Italics Magenta	NA	
Quay			<b>SLCONS</b>	F 13
	Description	7 pt Light U/L Black	NA	
	Named	7 pt Light U/L Black	<b>SLCONS</b>	



<b>R</b>				
Text		Type	S-57 ENC Object Class	INT Ref
Radar Beacon				S 2,3
	Continuous (Ramark)	6 pt Medium U/L Magenta	NA	S 2
	Transponder (Racon)	6 pt Medium U/L Magenta. Italics must be used when associated with a floating master object.	NA	S 3
	Named	NA	Master Object*	
Radar				
	Dome	6 pt Light U/L Black	<b>LNDMRK</b>	E 30.4
	Range	6 pt Medium U/L Magenta	NA	M 31
	Reference Line	"Ra" - 6 pt Medium U/L Magenta	NA	M 32
	Scanner	6 pt Light U/L Black	NA	E 30.3
Radar Station, Coast		6 pt Medium U/L Magenta	<b>RADSTA</b>	S 1
Radar Station, Surveillance		6 pt Medium U/L Black	NA	M 30
Radar Transponder, Beacon Bearing		6 pt Medium U/L Magenta	NA	S 3.5
Radiobeacon				S 10-16
	Aeronautical (Aero RC)	"Aero RC" - No longer depicted on Australian nautical charts	NA	S 16
	Directional (RD)	No longer depicted on Australian nautical charts	NA	S 11
	Direction bearing	No longer depicted on Australian nautical charts	NA	S 11
	Circular (non-directional marine or aeromarine)	No longer depicted on Australian nautical charts	NA	S 10
	Rotating Pattern	No longer depicted on Australian nautical charts	NA	S 12
	Named	No longer depicted on Australian nautical charts	NA	S 10
Radio Calling-in Point, Designation		7 pt Medium Capitals Magenta	<b>RDOCAL</b>	M 40
Radio Mast		6 pt Light U/L Black. Used for annotation of position circle or indication of multiple objects only.	<b>LNDMRK</b>	E 1
Radio/Radar Buoy		See <a href="#">Buoys</a> - Radar	Master Object*	S 3.6
Radio Station				S 14,15
	Coast providing QTG service (R)	No longer depicted on Australian nautical charts	NA	S 15
	Direction finding (RG) (emergency stations only)	6 pt Medium Capitals Magenta	<b>RDOSTA</b>	S 14
Radio Tower		6 pt Light U/L Black. Used for annotation of position circle or indication of multiple Objects only.	<b>LNDMRK</b>	E 1
Railway			<b>RAILWY</b>	D 13
	Station (name)	6 pt Light U/L Black	<b>BUISGL</b>	
	Named	6 pt Light Capitals Black. The use of spacing will depend on the length of the railway.	<b>RAILWY</b>	
Ramp			<b>SLCONS</b>	F 23
	Description	6 pt Light U/L Black	NA	F 23

Ramp	Named	6 pt Light U/L Black	<b>SLCONS</b>	
Rapids		NA	NA	C 22
“Real” AIS Aid to Navigation		See <a href="#">AIS Aids to Navigation</a>		
Reclamation, Under		See <a href="#">Under</a> - Reclamation	NA	F 31
Recommended Route - Named		NA	<b>RCRTCL, C_AGGR</b>	M 28.1
Recommended Track			<b>RECTRC</b>	
	Bearings	See <a href="#">Bearings on Recommended Track</a>	NA	M 1,3,4
	Draught	6 pt Medium U/L Italics Black	NA	M 6
	Reference to Note	7 pt Medium U/L Italics Black	NA	
Reef - Named		7 pt Medium U/L Italics Black. The use of a larger point size, Capitals and/or spacing will depend on area of feature.	<b>SBDARE, SEAARE, OBSTRN, SOUNDG, C_AGGR</b>	
Reference				
	Adjoining Chart	See <a href="#">Chart Reference</a>	NA	A 19
	Cautionary Notes	See <a href="#">Chart Reference</a>	NA	A 16
	Larger Scale Charts (with limits)	See <a href="#">Chart Reference</a>	NA	A 18
	Larger Scale Charts (without limits)	See <a href="#">Chart Reference</a>	NA	A 19
	Plan on another chart	See <a href="#">Chart Reference</a>	NA	A 18
	Plan on the same chart	See <a href="#">Chart Reference</a>	NA	A 18
Refinery			<b>PRDARE, C_AGGR</b>	
	Description	6 pt Light U/L Black. 7 pt may be used on large scale charts.	NA	
	Named	6 pt Light U/L Black. 7 pt may be used on large scale charts.	<b>PRDARE, C_AGGR</b>	
Refuge for Shipwrecked Sailors			<b>RSCSTA</b>	T 14
	Description	6 pt Light U/L Black	NA	T 14
	Named	NA	<b>RSCSTA</b>	
Related Publications Boxed Note		Refer <a href="#">Annex C</a>	NA	A 20
Reported Object		6 pt Light U/L Italics Black. Reported features which are always dry must be in upright text.	NA	I 3-4
Rescue Station		NA	<b>RSCSTA</b>	T 12
Reservoir		See <a href="#">Dam</a>	<b>LAKARE</b>	
Restricted Area		See relevant nature of restriction	<b>RESARE</b>	N 2,20-34,63
Ridge		See <a href="#">Mountain Ranges</a>	<b>LNDRGN</b>	
River, Important (Navigable at chart scale and listed in Sailing Directions). Refer Para 6(g)		7 pt Medium U/L Italics Black. The use of a larger point size, Capitals and/or spacing will depend on length and breadth of river.	<b>SEAARE</b>	C 20
River, Less Important (Non-navigable at chart scale and listed in Sailing Directions). Refer Para 6(g)		7 pt Medium U/L Italics Black. The use of 8-10 point, Capitals and/or spacing will depend on length and breadth of river.	<b>RIVERS</b>	C 20

River, Unimportant (Non-navigable at chart scale and not listed in Sailing Directions). Refer Para 6(g)		7 pt Light U/L Italics Black. The use of spacing will depend on length of river.	<b>RIVERS</b>	C 20
Road - Named		6 pt Light Capitals Black. The use of spacing will depend on the length of the road.	<b>ROADWY</b>	D 10-12
Rock - Named (always dry)		See <a href="#">Island/Islet</a> , less important and Island/Islet, unimportant	<b>LNDARE</b>	K 10
Rock - Named (intertidal or submerged)		7 pt Medium U/L Italics Black	<b>UWTROC</b>	K 11-15
Ro Ro (Roll on Roll off Ferry Terminal)			<b>HRBFAC</b>	F 50
	Description	6 pt Light U/L Black	NA	F 50
	Named	NA	<b>HRBFAC</b>	
Ruins		6 pt Light U/L Black. 7 pt and/or spacing may be used for large scale charts (areas only).	NA	D 8
Runway		NA	<b>RUNWAY</b>	

<b>S</b>				
<b>Text</b>		<b>Type</b>	<b>S-57 ENC Object Class</b>	<b>INT Ref</b>
"Salt pans"		6 pt Light U/L Black. 7 pt and or spacing may be used for large areas or large scale charts.	NA	C 24
"Sand and Mud"		6 pt Light U/L Italics Black	NA	
Sand Dunes		See <a href="#">Dunes, Sand</a>	<b>LNDRGN, SLOGRD</b>	C 8
Sand Patch (Not conspicuous)				
	Description	6 pt Light U/L Black	NA	
	Named	6 pt Light U/L Black	<b>LNDRGN, SLOGRD</b>	
Sand Waves		7 pt Medium U/L Italics Black	NA	J 14
Sandy Shore				C 6
	Description	6 pt Light U/L Black. 7 pt and/or spacing may be used for large areas or large scale charts.	NA	
	Named	6 pt Light U/L Black. 7 pt and/or spacing may be used for large areas or large scale charts.	<b>COALNE, DEPARE</b>	
Scale, Chart		Refer <a href="#">Annex D</a>	NA	A 13
Scale Bar		6 pt Light Capitals Black	NA	A 14-15
Seas		See <a href="#">Ocean</a>	<b>SEAARE</b>	
Seabed Quality		See <a href="#">Bottom Quality</a>	NA	J
Seamount		See <a href="#">Oceanographic Features</a>	<b>SEAARE</b>	
Seaplane Landing Area				N 13
	Anchorage	NA	NA	N 14
	Description	8 pt Medium U/L Italics Magenta. 7 pt may be used in congested areas.	NA	
	Named	NA	<b>SPLARE</b>	
Seawall		NA	NA	F 2
Sectors (Light)				
	Faint	See <a href="#">Light</a> - Faint	NA	P 45
	Intensified	See <a href="#">Light</a> - Intensified	NA	P 46
	Light	See <a href="#">Light Sector Colours</a>	NA	P 40
	Obscured	See <a href="#">Light</a> - Obscured	NA	P 43
"see Note"		See <a href="#">Note</a> - Heading and reference on face of chart	NA	
Sewer		See <a href="#">Pipeline</a>	NA	L 41
Shellfish Beds			<b>MARCUL</b>	K 47
	Description	6 pt Light U/L Italics Black. 7 pt Medium Italics Magenta is to be used for Pearl Cultures.	NA	K 47
	Named	NA	<b>MARCUL</b>	
Shingly Shore			<b>COALNE</b>	C 7
	Description	6 pt Light U/L Black. 7 pt and/or spacing may be used for large areas or large scale charts.	NA	C 7
	Named	6 pt Light U/L Black. 7 pt and/or spacing may be used for large areas or large scale charts.	<b>COALNE</b>	

Shipping Fairway		12 pt Medium Capitals Italics Magenta. Smaller point sizes may be used in small areas or on smaller scale charts and Plans. For (see Note) refer to <a href="#">Note</a> above.	<b>FAIRWY</b>	M 18
Shipyard			<b>HRBFAC</b>	
	Description	6 pt Light U/L Black. 7 pt and/or spacing may be used for large areas or large scale charts.	NA	
Shipyard	Named	6 pt Light U/L Black. 7 pt and/or spacing may be used for large areas or large scale charts.	<b>HRBFAC</b>	
Shoals		See <a href="#">Reef - Named</a>	<b>SEAARE, SOUNDG</b>	
Signal Station, Various			<b>SISTAT, SISTAW</b>	T 20-36
	Description	6 pt Medium Black	NA	T 20-36
	Named	NA	<b>SISTAT, SISTAW</b>	
Silo (Not conspicuous)			<b>SILTNK</b>	E 33
	Description	6 pt Light U/L Black. Used for annotation of position circle or indication of multiple objects only.	NA	E 33
	Named	NA	<b>SILTNK</b>	
Slipway			<b>SLCONS</b>	F 23
	Description	6 pt Light U/L Black. 7 pt may be used for large scale charts. Use Italics for intertidal or submerged slipways.	NA	F 23
	Named	6 pt Light U/L Black. 7 pt may be used for large scale charts. Use Italics for intertidal or submerged slipways.	<b>SLCONS</b>	
Small Craft			<b>SMCFAC</b> or related Object (where possible)	
	Anchorage	7 pt Medium U/L Italics Magenta. Spacing may be used for large areas.	NA	N 12.1
	Facility	6 pt Light U/L Black	<b>SMCFAC</b> or related Object (where possible)	U
	Moorings	See <a href="#">Moorings, Small Craft</a>	NA	Q 44
Sounding	<i>See Australian Paper Chart Specifications clause B-412.1.</i>		NA	I 10-15
	Named	7 pt Medium U/L Italics Black	<b>SOUNDG</b>	
Sounding Doubtful (SD)		6 pt Light Capitals Italics Black	NA	I 2
Spit				
	On Land	See <a href="#">Point</a>	<b>LNDRGN</b>	
	Intertidal	See <a href="#">Oceanographic Features</a>	<b>SEAARE</b>	
Spoil Ground		6 pt Light U/L Italics Black. The use of a larger point size and/or spacing will depend on size of area.	NA	N 62
Spot Height		See <a href="#">Height above High Water</a>	<b>LNDELV</b>	C 11
Spring		NA	NA	J 15
Steep Coast		See <a href="#">Cliff</a>	<b>COALNE, SLOTOP</b>	C 3
Steps		See <a href="#">Landing Stairs</a>	NA	U 7
Stockpile (not conspicuous)			<b>PRDARE</b>	
	Description	6 pt Light U/L Black	NA	
	Named	NA	<b>PRDARE</b>	
Stony Shore			<b>COALNE</b>	C 7

	Description	6 pt Light U/L Black. 7 pt and/or spacing may be used for large areas or large scale charts.	NA	C 7
	Named	6 pt Light U/L Black. 7 pt and/or spacing may be used for large areas or large scale charts.	<b>COALNE</b>	
Strait		See <a href="#">Channel</a>	<b>SEAARE</b>	
Stream		See <a href="#">River</a>	<b>RIVERS, SEAARE</b>	
Street - Named		See <a href="#">Road - Named</a>	<b>ROADWY</b>	D 10-12
Submarine Exercise Area		7 pt Light Capitals Italics Magenta. The use of a larger point size and/or spacing will depend on size of area.	<b>MIPARE</b>	N 33
Submarine Transit Lane		NA	NA	N 33
Swept Area Date		8 pt Medium Italics Magenta	NA	I 24
Swept Depth		8 pt medium Magenta	NA	I 24
"Synthetic" AIS Aid to Navigation		See <a href="#">AIS Aids to Navigation</a>		

<b>T</b>				
Text		Type	S-57 ENC Object Class	INT Ref
Tank (Not conspicuous)			<b>SILTNK</b>	E 32
	Description	6 pt Light U/L Black. Used for annotation of position circle or indication of multiple objects only.	NA	E 1,32
	Named	NA	<b>SILTNK</b>	
Tank Farm		NA	<b>PRDARE</b>	E 32
Telegraph, Telephone		See <a href="#">Cables</a> - Overhead	NA	D 27
Terminal - Bulk, Container, Passenger, Tanker			<b>HRBFAC</b>	
	Description	6 pt Light U/L Black. 7 pt may be used for large areas or on large scale charts.	NA	
	Named	6 pt Light U/L Black. 7 pt may be used for large areas or on large scale charts.	<b>HRBFAC</b>	
Territorial Sea				
	Baselines	7 pt Medium U/L Italics Magenta	NA	N 42
	Seaward Limit	NA	NA	N 43
Tidal Flats		6 pt Light U/L Black. 7 pt and or spacing may be used for large areas or large scale charts.	<b>SEAAARE</b>	
<a href="#">Tidal Heights</a>	<a href="#">Reference to Note</a>	<a href="#">8 pt Medium U/L Black</a>	<a href="#">NA</a>	
Tidal Panel		Refer <a href="#">Annex E</a>	NA	H 30
Tidal Stream			NA	
	Panel	Refer <a href="#">Annex E</a>	NA	H 31
	Rates (ebb and flood)	6 pt Light U/L Italics Black. No space between rate and "kn".	NA	H 40,41
	Reference (in diamond)	6 pt Medium Capitals Magenta	<b>TS_PAD</b>	H 46
<a href="#">Tidal Streams and Currents</a>	<a href="#">Reference to Note</a>	<a href="#">8 pt Medium U/L Italics Black</a>	<a href="#">NA</a>	
Tide Gauge			<b>SISTAW</b>	T 32
	Description	6 pt Light U/L Black	NA	T 32
	Named	NA	<b>SISTAW</b>	
Tideway		NA	<b>TIDEWY</b>	C j
Timber Yard		NA	NA	F 52
Title				
	Chart	Refer <a href="#">Annex D</a>	NA	A 10
	Inset	Medium Black. Point size dependant on size of inset and space available (minimum 10 pt). Note that elements of the Title must be consistent, as indicated in <a href="#">Annex D</a> .	NA	
	Notes on chart construction	Refer <a href="#">Annex D</a>	NA	A 11

	Plan	Medium Black. Point size dependant on size of inset and space available (minimum 10 pt). Note that elements of the Title must be consistent, as indicated in <a href="#">Annex D</a> .	NA	A
Tower (Not conspicuous)			<b>LNDMRK, SILTNK</b>	E 1,20,21, 30.2
	Description	6 pt Light U/L Black. Used for annotation of position circle or indication of multiple objects only.	NA	E 20,21, 30.2
	Named	6 pt Light U/L Black	<b>LNDMRK, SILTNK</b>	
	Water	NA	NA	E 21
Town, Important (Containing port/harbour facilities at chart scale). Refer Para 6(g)		7 pt Medium Capitals Black. The use of a larger point size and/or spacing will depend on the size of the town.	<b>BUAARE, ADMARE</b>	D 1,2
Town, Less Important (containing port/harbour facilities not shown at chart scale). Refer Para 6(g)		7 pt Medium U/L Black. The use of a larger point size and/or spacing will depend on the size of the town.	<b>BUAARE, ADMARE</b>	D 2,3
Town, Unimportant (All other cases). Refer Para 6(g)		7 pt Light U/L Black	<b>BUAARE</b>	D 3-4
Track, Recommended		See <a href="#">Recommended Track</a>	NA	M 3,4
Traffic Zone, Inshore		8 pt Medium U/L Italics Magenta	NA	M 25.1-25.2
Training Wall			<b>SLCONS</b>	F 5
	Description	6 pt Light U/L Black. 7pt and/or spacing may be used for long walls or large scale charts. Italics must be used for intertidal/submerged training walls.	NA	F 5
	Named	NA	<b>SLCONS</b>	
Transit Bearing		6 pt Medium Black (whole degrees)	NA	M 2
Transmission Line		NA	NA	D 26
Transporter, Overhead		See <a href="#">Conveyor</a>	<b>CONVYR</b>	D 25
Trees, Legend		6 pt Light U/L Black. 7 pt and/or spacing may be used for large areas or on large scale charts.	NA	C 30
Triangulation Point		NA	<b>CTRPNT</b>	B 20
Trot Mooring Number		6 pt Medium Magenta	<b>BERTHS</b>	Q 42
Tug Harbour		See <a href="#">Channel</a>	NA	
Tunnel (Under water)		6 pt Medium U/L Black. The use of 7 pt and/or Capitals will depend on extent of tunnel.	<b>TUNNEL</b>	D 16
Tunny Nets		6 pt Light U/L Italics Black	NA	K 45
TV Mast or Tower (Not conspicuous)			<b>LNDMRK</b>	E 1,28,29
	Description	6 pt Light U/L Black. Used for annotation of position circle or indication of multiple objects only.	NA	E 1
	Named	NA	<b>LNDMRK</b>	
Two-Way Route		12 pt Medium Capitals Italics Magenta. Smaller point sizes may be used in small areas or on smaller scale charts and Plans. For (see Note) refer to <a href="#">Note</a> above.	<b>C_AGGR</b>	M 27,28



<b>U</b>				
<b>Text</b>		<b>Type</b>	<b>S-57 ENC Object Class</b>	<b>INT Ref</b>
Under				
	Construction	6 pt Light U/L Black	NA	F 30,32
	Reclamation	6 pt Light U/L Black	NA	F 31
Unexamined		6 pt Light U/L Italics Black	NA	
<a href="#">Unexploded Ordnance</a>	<a href="#">Reference to Note</a>	<a href="#">See Note – Heading and reference on paper chart</a>	NA	
UNSURVEYED		9 pt Medium Capitals Italics Magenta. The use of spacing will depend on area to be covered. Smaller point sizes may be used in congested areas.	NA	I 25

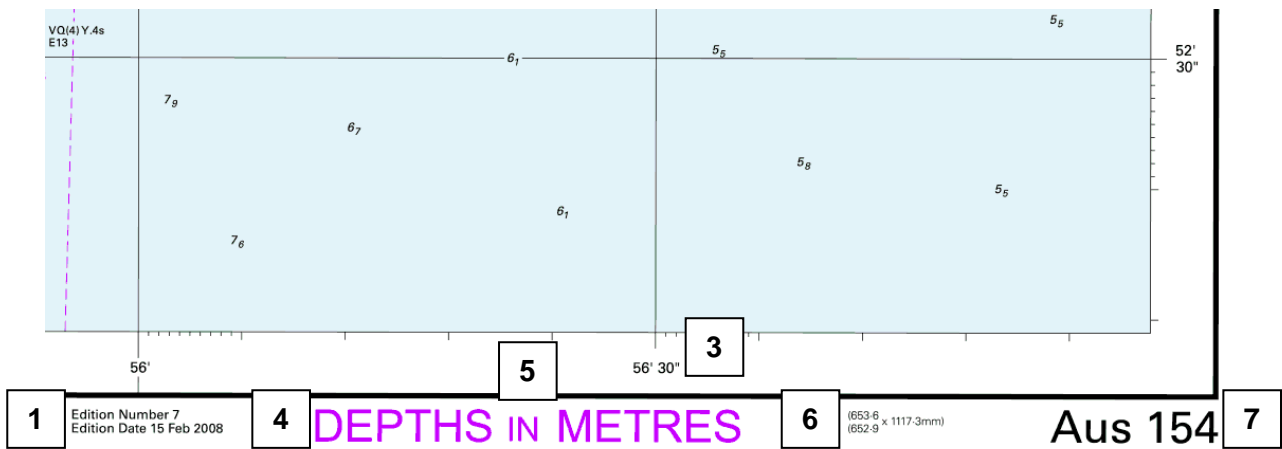
<b>V</b>			
<b>Text</b>	<b>Type</b>	<b>S-57 ENC Object Class</b>	<b>INT Ref</b>
Variation, Magnetic	See <a href="#">Magnetic Variation</a>	NA	B 82
Vertical Clearance	See <a href="#">Height above High Water</a>	NA	D 20
Vegetation, Description	6 pt Light U/L Black. 7 pt and/or spacing may be used for large areas.	NA	C 30
Viewpoint Reference	6 pt Light U/L Black	NA	
Village, Important	See <a href="#">Town, Less Important</a>	<b>BUAARE</b>	D 3,4
Village, Less Important	See <a href="#">Town, Unimportant</a>	<b>BUAARE</b>	D 4
"Virtual" AIS Aid to Navigation	See <a href="#">AIS Aids to Navigation</a>		

<b>W</b>				
<b>Text</b>		<b>Type</b>	<b>S-57 ENC Object Class</b>	<b>INT Ref</b>
Wall		NA	NA	
Warehouse (designation)		See <a href="#">Building</a>	<b>BUISGL, PRDARE</b>	F 51
Watch Tower		See <a href="#">Lookout</a>	<b>LNDMRK</b>	
Waterfall		NA	NA	C 22
Water Tower		See <a href="#">Tower</a> - Water	<b>SILTNK</b>	E 21
Water Turbulence (Breakers, Eddies, Overfalls, Tide Rips, Bombora)		6 pt Light U/L Italics Black. To be used only for additional description (e.g. Strong Tide Rips)	OBJNAM to be populated for the related object (e.g. <b>UWTROC</b> )	H 44,45 K 17
Wave Recorder		6 pt Light U/L Italics Black	NA	Q 59
Waverider (buoy)		See <a href="#">Buoys</a> - Waverider	NA	
Weed/Kelp		6 pt Light U/L Italics Black	NA	J 13
Well			NA	L 20-23
	Submerged / suspended	6 pt Medium U/L Italics Black	NA	L 20,21
	Always dry	6 pt Medium U/L Black	NA	L 23
Wharf			<b>SLCONS</b>	F 13
	Description	NA	NA	F 13
	Named	7 pt Light U/L Black. Spacing may be used for large wharves.	<b>SLCONS</b>	
Wind Farm (On land)			<b>PRDARE</b>	
	Description	6 pt Light U/L Black	NA	E 26.2
	Named	NA	<b>PRDARE</b>	
Wind Farm (In Water)			<b>PRDARE</b>	
	Description	6 pt Medium Italics Black. 7 pt and/or spacing may be used for large areas.	NA	
	Named	NA	<b>PRDARE</b>	
Windmill				
	Named	NA	<b>LNDMRK</b>	
	Wingless	6 pt Light U/L Black	NA	E 25.2
Windmotor		NA	<b>LNDMRK</b>	
Wooded		6 pt Light U/L Black. 7 pt and/or spacing may be used for large areas.	NA	C 30
Works In Progress		See <a href="#">Under</a> - Construction	NA	F 30,31
Wreck			<b>WRECKS</b>	
	Description	7 pt Medium U/L Italics Black	NA	K 20-30
	Historic	7 pt Medium U/L Italics Magenta. 6 pt may be used in area symbols.	NA	N 26
	Mast	6 pt Light U/L Italics Black	NA	K 25
	Named	NA	<b>WRECKS</b>	

<b>Y</b>				
<b>Text</b>		<b>Type</b>	<b>S-57 ENC Object Class</b>	<b>INT Ref</b>
Yacht/Sailing Club - Named		6 pt Light U/L Black	<b>BUISGL</b>	
Yacht Harbour		See <a href="#">Marina (Named)</a>	<b>HRBFAC</b>	U 1.1

<b>Z</b>				
<b>Text</b>		<b>Type</b>	<b>S-57 ENC Object Class</b>	<b>INT Ref</b>
Zone of Confidence (ZOC) Diagram		Refer <a href="#">Annex E</a>	NA	A 17

ANNEX B – BORDER AND MARGINAL DETAILS



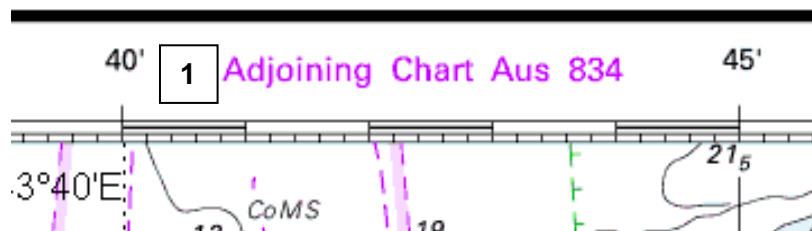
- 1 = 7 pt Medium U/L Black
- 2 = 10 pt Medium Black
- 3 = 8 pt Medium Black
- 4 = 24 pt Medium Capitals Magenta } Also for DEPTHS IN FATHOMS
- 5 = 18 pt Medium Capitals Magenta }
- 6 = 6 pt Light U/L Black
- 7 = 24 pt Medium U/L Black



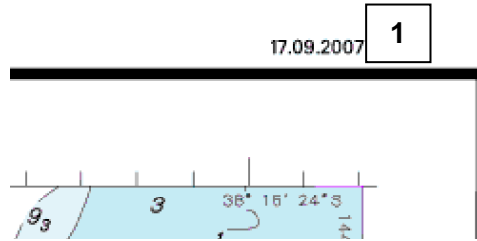
Published by the Australian Hydrographic Service, 3 August 2007, under the direction of Captain R. Nairn, R.A.N, Hydrographer of Australia.  
 8 Station Street, Wollongong, N.S.W. 2500, Telephone (02) 4221 8500, Fax (02) 4221 8599.  
[www.hydro.gov.au](http://www.hydro.gov.au)

- 1
- 2
- 3

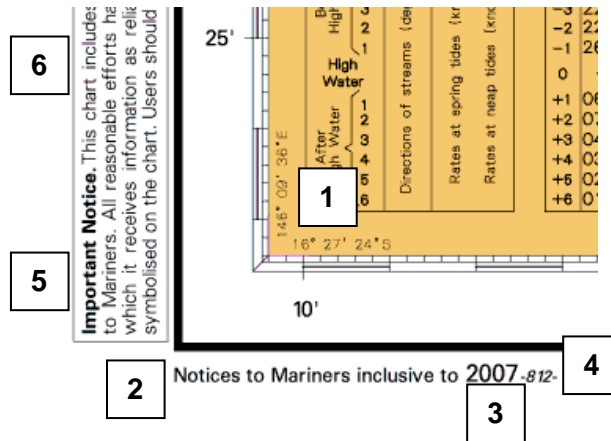
- 1 = 8 pt medium U/L Black
- 2 = 8 pt Light U/L Black
- 3 = 8 pt Light L Black



- 1 = 9 pt Medium U/L Magenta

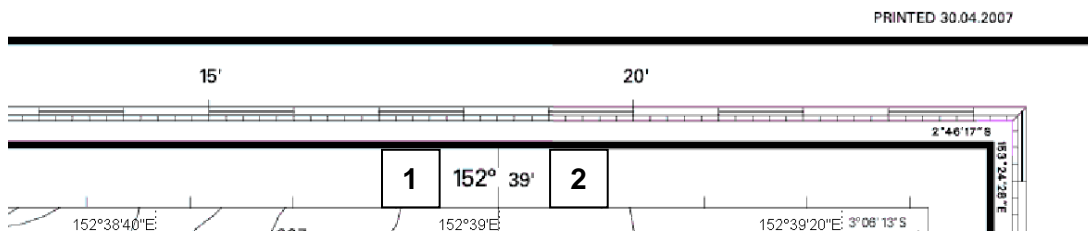


1 = 6 pt Medium Black



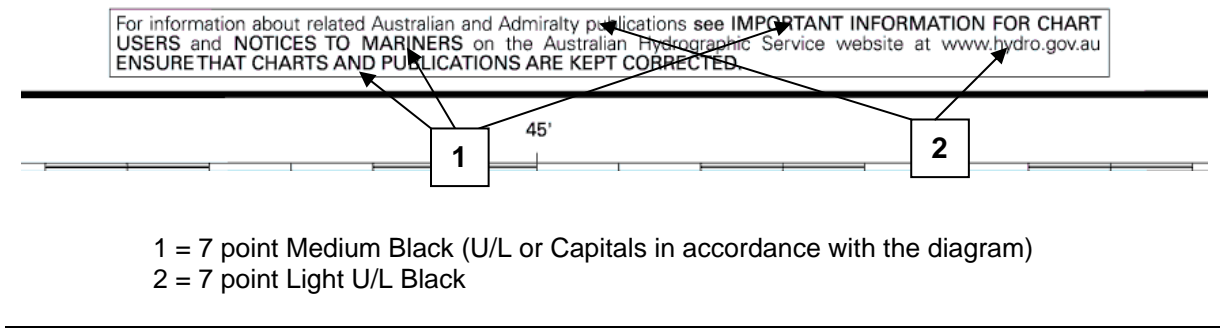
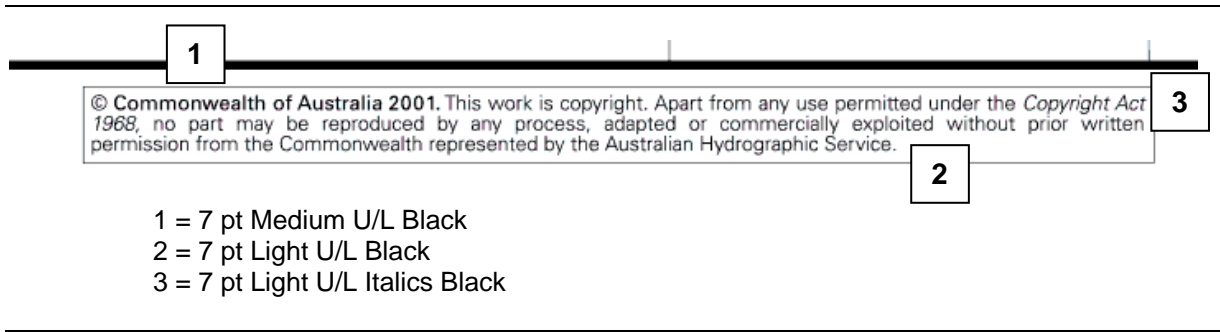
- 1 = 5 pt Light Capitals Black
- 2 = 7 pt Medium U/L Black
- 3 = 9 pt Medium Black
- 4 = 6 pt Medium Italics Black
- 5 = 7 pt Bold U/L Black
- 6 = 7 pt Light U/L Black

**For Plans and Insets:**



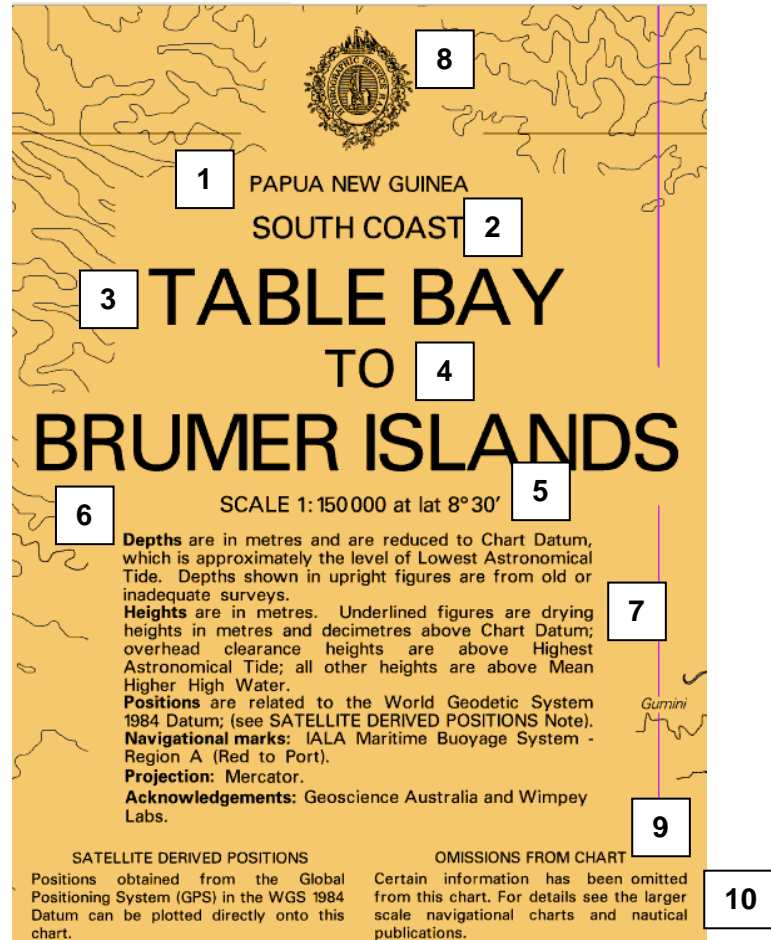
- 1 = 9 pt Medium Black
- 2 = 7 pt Medium Black

**ANNEX C - COPYRIGHT / RELATED PUBLICATION DETAILS**





ANNEX D - TITLE, CONSTRUCTION AND CHART NOTES



- 1 = 10 pt Medium Capitals Black
- 2 = 14 pt Medium Capitals Black
- 3 = 36 pt Medium Capitals Black
- 4 = 24 pt Medium Capitals Black; qualifying text, i.e. APPROACHES TO; TO; AND; INCLUDING; (SHEET 2); PORT OF (only if "Port of" is not part of the geographic name of the area)
- 5 = 10 pt Medium Capitals Black
- 6 = 8 pt Bold U/L Black
- 7 = 8 pt Medium U/L Black (Blocked 75mm)
- 8 = To be included in proposed Corporate Style Guide or within symbology appendix.
- 9 = 7 pt Medium Capitals
- 10 = 7 pt Medium U/L (Blocked 50mm)

Refer to SPEC\_05\_55\_AA223480 AHS Charting Specifications, clauses B-241 and B-242 for additional formatting specifications for title block, construction note and cautionary/explanatory note elements.

ANNEX E - TIDAL STREAM AND TIDAL LEVEL PANELS

**Tidal Streams referred to HW at DEVONPORT**

Hours	Geographical Position	A		B		C		D	
		40°23'·7 S 147 49·2 E	40°38'·9 S 148 32·3 E	40°27'·7 S 148 24·1 E	40°59'·9 S 148 24·1 E				
-6		304	0·6 0·5	259	0·6 0·5	286	0·9 0·7	024	0·2 0·2
-5		286	0·8 0·6	297	2·6 2·1	234	1·6 1·3	024	0·3 0·3
-4		268	0·8 0·6	297	3·1 2·5	232	1·8 1·4	021	0·3 0·3
-3		231	0·5 0·4	293	2·7 2·2	214	1·8 1·4	340	0·2 0·2
-2		178	0·4 0·3	283	1·8 1·4	213	1·7 1·3	309	0·1 0·1
-1		159	0·4 0·3	233	0·8 0·6	208	1·2 1·0	249	0·1 0·1
0		131	0·6 0·5	098	1·1 0·8	186	0·3 0·2	208	0·2 0·1
+1		123	0·8 0·6	107	2·2 1·7	036	0·8 0·7	168	0·3 0·3
+2		113	0·8 0·6	113	3·0 2·4	057	1·9 1·5	166	0·3 0·3
+3		111	0·6 0·5	106	2·5 2·0	055	2·3 1·8	190	0·2 0·2
+4		110	0·4 0·3	085	1·5 1·2	049	2·1 1·7	228	0·1 0·1
+5		104	0·2 0·2	152	0·8 0·6	004	1·0 0·8	355	0·1 0·1
+6		357	0·2 0·1	176	0·7 0·6	328	0·8 0·7	019	0·1 0·1

**Tidal Levels referred to Datum of Soundings**

Place	Lat S	Long E	Heights in metres above datum					
			HAT	MHHW	MLHW	MSL	MHLW	MLLW
Samarai Island	10° 37'	150° 40'	1·6	1·4	0·9	0·8	0·6	0·1
Doini Island	10 42	150 42	2·0	1·7	1·1	1·0	0·9	0·3

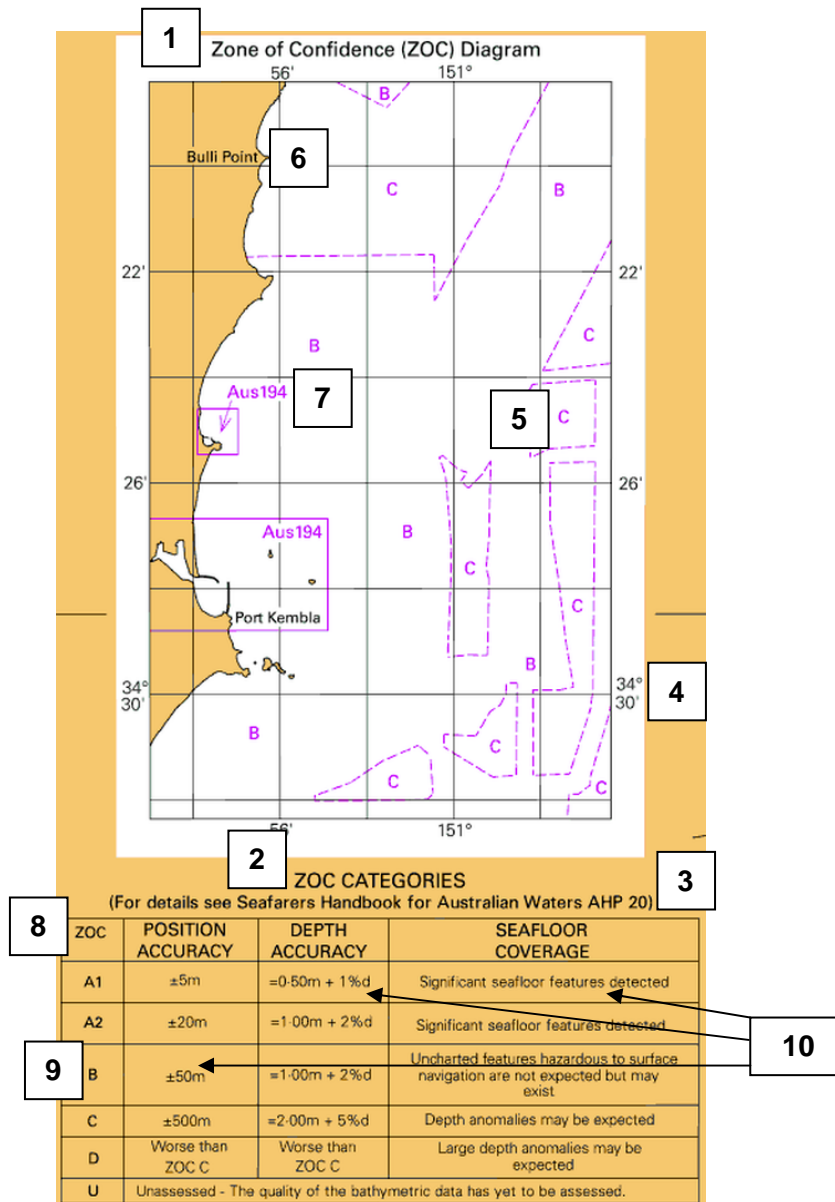
- 1 = 8 pt Medium U/L Black (NOTE: Name of place of reference is to be in CAPITALS).
- 2 = 6 pt Light Black
- 3 = 6 pt Medium U/L Black
- 4 = 6 pt Light U/L Black
- 5 = 6 pt Medium Capitals Magenta
- 6 = 8 pt Medium U/L Black
- 7 = 7 pt Medium U/L Black
- 8 = 7 pt Light U/L Black
- 9 = 7 pt Light Black
- 10 = 7 pt Light U/L Black
- 11 = 7 pt Light Capitals Black
- 12 = 7 pt Medium Black

NOTE: Where a selected tidal station falls outside the limit of the Chart, the Tides and Geodetic Officer may be of the opinion that the tidal levels for the station are not indicative of the tidal levels for the Chart, e.g. a Chart that is entirely within enclosed waters but the only tide station observations are in open water. Where this occurs, a note may be placed under the Tidal Levels table as follows:

Tidal level values shown are approximate and may differ for the area of this chart.

Where required, this note must be shown in 7 pt Medium Black text, with the left edge of the text aligned with the left edge of the panel.

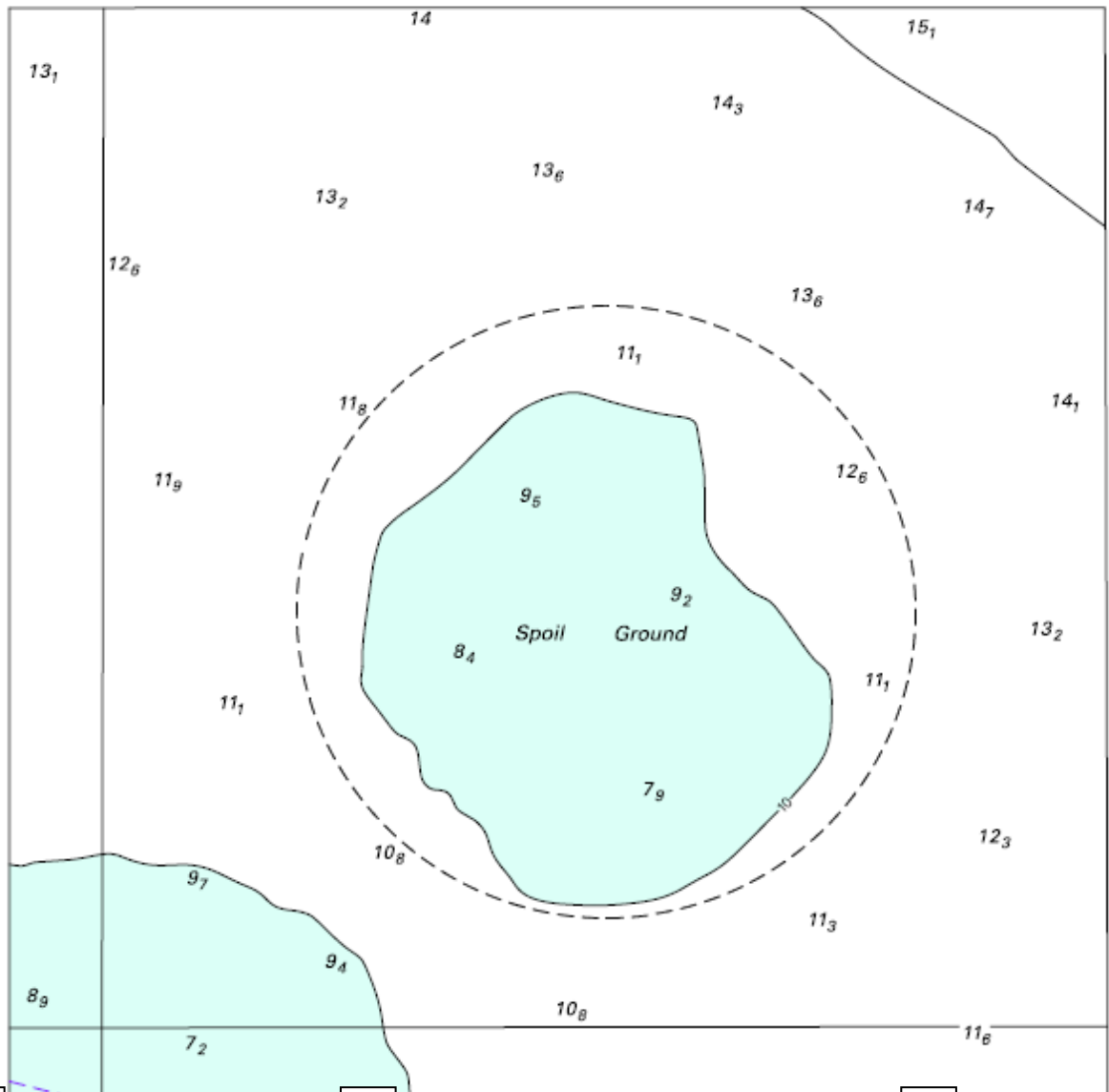
ANNEX F - ZOC DIAGRAMS



- 1 = 8 pt Medium U/L Black
- 2 = 8 pt Medium Capitals Black
- 3 = 7 pt Medium U/L Black
- 4 = 7 pt Light Black
- 5 = 7 pt Medium Capitals Magenta. 6 pt may be used in congested areas.
- 6 = 6 pt Medium U/L Black (for identifying land features for location purposes). Italics must be used for Hydrographic features.
- 7 = 7 pt Medium U/L Magenta. 6 pt may be used in congested areas.
- 8 = 7 pt Medium Capitals Black
- 9 = 6 pt Medium Capitals Black
- 10 = 6 pt Light U/L Black

ANNEX G – NOTICES TO MARINERS BLOCK MARGINALIA

**1** *To accompany Australian Notice to Mariners 614/2014*



**1** Block for chart Aus 262

**2** © Commonwealth of Australia 2014

**3** (133.7 x 133.6mm)

**1** *To accompany Australian Notice to Mariners 729/2014*

**MARINE FARMS**

Marine farms, which may be floating or fixed structures and their associated moorings should be avoided. The farms are generally marked by buoys or beacons, which may be lit. Their charted positions are approximate.

**1** *Note for chart Aus 748*

- 1 = 8 pt Medium U/L Italics Black
- 2 = 8 pt Light U/L Black
- 3 = 6 pt Light U/L Black