



22 March 2019

Edition 6

# AUSTRALIAN NOTICES TO MARINERS

## Notices 254 - 308

Published fortnightly by the Australian Hydrographic Office



Australian Notices to Mariners are the authority for correcting charts and publications published by the Australian Hydrographic Office covering Australia, Papua New Guinea, Solomon Islands, Australian Antarctic Territory and Timor-Leste.

Commodore F.T. FREEMAN RAN  
*Hydrographer of Australia*

---

### SECTIONS.

- I. **Australian Notices to Mariners, including blocks and notes.**
- II. **Hydrographic Reports.**
- III. **Navigational Warnings.**

### SUPPLEMENTS.

- I. **Tracings**
- II. **Cumulative List of Australian Notices to Mariners.**
- III. **Cumulative List of Temporary and Preliminary Australian Notices to Mariners.**
- IV. **Temporary and Preliminary Notices in force.**
- V. **Amendments to Admiralty List of Lights and Fog Signals (Vol K), Radio Signals (NP 281(2), 282, 283(2), 285, 286(4)) and Sailing Directions (NP 9, 13, 14, 15, 33, 34, 35, 36, 39, 44, 51, 60, 61, 62, 100, 136).**

---

© Commonwealth of Australia 2019

This work is copyright. Apart from any use permitted under the Copyright Act 1968, no part may be reproduced by any process, adapted, communicated or commercially exploited without prior written permission from The Commonwealth represented by the Australian Hydrographic Office.

## IMPORTANT NOTICE

This edition of Notices to Mariners includes all significant information affecting AHO products which the AHO has become aware of since the last edition. All reasonable efforts have been made to ensure the accuracy and completeness of the information, including third party information, on which these updates are based. The AHO regards third parties from which it receives information as reliable, however the AHO cannot verify all such information and errors may therefore exist. The AHO does not accept liability for errors in third party information.

---

## GENERAL INSTRUCTIONS

The substance of these notices should be inserted on the charts affected.

Bearings are referred to the true compass and are reckoned clockwise from North; those relating to lights are given as seen by an observer from seaward.

Positions quoted in notices relate to WGS84 which is the horizontal datum for all charts produced by the Australian Hydrographic Office.

The range quoted for a light is its nominal range.

Depths are with reference to the chart datum of each chart. Heights are above mean high water springs or mean higher high water, as appropriate.

The capital letter (P) or (T) after the number of any notice denotes a preliminary or temporary notice respectively, which are contained separately at the end of the permanent notices.

---

## REPORTING OF DANGERS

Mariners are particularly requested to notify the AUSTRALIAN HYDROGRAPHIC OFFICE, Locked Bag 8801 Wollongong, NSW 2500 (Fax 02-4223 6599, e-mail [datacentre@hydro.gov.au](mailto:datacentre@hydro.gov.au) or, alternatively by filling in and submitting the [Hydrographic Notes](#) forms located on the web site – [www.hydro.gov.au](http://www.hydro.gov.au)), immediately on the discovery of new dangers or suspected dangers to navigation. For changes or defects in aids to navigation notify AusSAR (Fax 02-6230 6868 or email [rccaus@amsa.gov.au](mailto:rccaus@amsa.gov.au)).

---

## AUTHORISED USE

Copies of Australian notices are available free of charge from the Australian Hydrographic Office (AHO) website ([www.hydro.gov.au](http://www.hydro.gov.au)) and through the eNotices (email) service ([www.hydro.gov.au/enotices/enotices.htm](http://www.hydro.gov.au/enotices/enotices.htm)).

Individual Notices may be copied for the purpose of inserting Notice substance on official charts and publications. Paper copies may be printed by chart agents and distributed to customers on a cost recovery basis. Participating chart agents are listed on the AHO website as providing a 'Paper Notices to Mariners' service ([www.hydro.gov.au/webapps/jsp/agents/agents-list.jsp](http://www.hydro.gov.au/webapps/jsp/agents/agents-list.jsp)). Copies of the notices may not be sold for profit without prior written agreement.

## NUMERICAL INDEX OF NOTICES TO MARINERS

### Edition No 6

Notices	Aus Chart, INT Chart, ENC Cell, AHP, BA Pubs
254	Aus 32, 182, 643
255	Aus 59, 60, 642, 646, PNG 642, 646
256	Amendment to Australian National Tide Tables 2019
257	Aus 220
258	Aus 237
259	Aus 270, 832, 833
260	Aus 259, 267, 828
261	Aus 701
262	Aus 643
263	Aus 387
264	Aus 388, 389, 651
265	Aus 311, 4721, INT 721
266	Aus 751
267	Aus 109, 110
268	Aus 112, 197, 335, 349, 357, 400, 487, 489, 754, 787, 789, 802, 808, 4601, 4602, 4643, 4644, 4708, 4709, 4710, 4723, 4725, 4726, 4727, 4728, INT 601, 602, 643, 644, 708, 709, 710, 723, 725, 726, 727, 728
269	SLB 302
270(T)	Aus 268
271(T)	Aus 236, 237
272(T)	Aus 249, 250
273(T)	Aus 6
274(T)	Aus 250
275(T)	Aus 252, 253
276(T)	Aus 236
277(T)	Aus 256
278(T)	Aus 815
279(T)	Aus 256, 827
280(T)	Aus 247
281(T)	Aus 4
282(T)	Aus 4
283(T)	Aus 521, 522, 4603, 4604, 4620, 4621, 4622, INT 603, 604, 620, 621, 622
284(T)	Aus 642, 643
285(T)	Aus 662
286(P)	PNG 646
287(T)	Aus 391
288(T)	Aus 622
289(T)	Aus 519, 520
290(T)	Aus 754
291(T)	Aus 328
292(T)	Aus 50, 51
293(T)	Aus 48, 319, 320, 322, 323, 325, 326, 327, 741, 4721, 4722, 4723, INT 721, 722, 723
294(T)	Aus 57, 327, 741, 742
295(T)	Aus 112, 117, 335, 753, 754, 755, 756, 4725, 4726, INT 725, 726
296(T)	Aus 81, 751
297(T)	Aus 327, 328, 743, 744
298(T)	Aus 328, 329, 4723, 4725, INT 723, 725
299(T)	Aus 325, 326
300(T)	Aus 32
301(T)	Aus 357
302(T)	Aus 357, 487
303(T)	Aus 143
304(T)	Aus 143, 155
305(T)	Aus 140, 143, 152
306(T)	Aus 178, 487, 790, 799, 801, 802, 4644, INT 644
307(T)	Aus 148, 167, 357, 487, 799, 802, 4644, INT 644
308(T)	Aus 164

## NUMERICAL INDEX OF CHARTS AFFECTED

### Edition No 6

Aus Chart	Notices	Aus Chart	Notices
Aus 4	281(T), 282(T)	Aus 400	268
Aus 6	273(T)	Aus 487	268, 302(T), 306(T), 307(T)
Aus 32	254, 300(T)	Aus 489	268
Aus 48	293(T)	Aus 519	289(T)
Aus 50	292(T)	Aus 520	289(T)
Aus 51	292(T)	Aus 521	283(T)
Aus 57	294(T)	Aus 522	283(T)
Aus 59	255	Aus 622	288(T)
Aus 60	255	Aus 642	255, 284(T)
Aus 81	296(T)	Aus 643	254, 262, 284(T)
Aus 109	267	Aus 646	255
Aus 110	267	Aus 651	264
Aus 112	268, 295(T)	Aus 662	285(T)
Aus 117	295(T)	Aus 701	261
Aus 140	305(T)	Aus 741	293(T), 294(T)
Aus 143	303(T), 304(T), 305(T)	Aus 742	294(T)
Aus 148	307(T)	Aus 743	297(T)
Aus 152	305(T)	Aus 744	297(T)
Aus 155	304(T)	Aus 751	266, 296(T)
Aus 164	308(T)	Aus 753	295(T)
Aus 167	307(T)	Aus 754	268, 290(T), 295(T)
Aus 178	306(T)	Aus 755	295(T)
Aus 182	254	Aus 756	295(T)
Aus 197	268	Aus 787	268
Aus 220	257	Aus 789	268
Aus 236	271(T), 276(T)	Aus 790	306(T)
Aus 237	258, 271(T)	Aus 799	306(T), 307(T)
Aus 247	280(T)	Aus 801	306(T)
Aus 249	272(T)	Aus 802	268, 306(T), 307(T)
Aus 250	272(T), 274(T)	Aus 808	268
Aus 252	275(T)	Aus 815	278(T)
Aus 253	275(T)	Aus 827	279(T)
Aus 256	277(T), 279(T)	Aus 828	260
Aus 259	260	Aus 832	259
Aus 267	260	Aus 833	259
Aus 268	270(T)	Aus 4601	268
Aus 270	259	Aus 4602	268
Aus 311	265	Aus 4603	283(T)
Aus 319	293(T)	Aus 4604	283(T)
Aus 320	293(T)	Aus 4620	283(T)
Aus 322	293(T)	Aus 4621	283(T)
Aus 323	293(T)	Aus 4622	283(T)
Aus 325	293(T), 299(T)	Aus 4643	268
Aus 326	293(T), 299(T)	Aus 4644	268, 306(T), 307(T)
Aus 327	293(T), 294(T), 297(T)	Aus 4708	268
Aus 328	291(T), 297(T), 298(T)	Aus 4709	268
Aus 329	298(T)	Aus 4710	268
Aus 335	268, 295(T)	Aus 4721	265, 293(T)
Aus 349	268	Aus 4722	293(T)
Aus 357	268, 301(T), 302(T), 307(T)	Aus 4723	268, 293(T), 298(T)
Aus 387	263	Aus 4725	268, 295(T), 298(T)
Aus 388	264	Aus 4726	268, 295(T)
Aus 389	264	Aus 4727	268
Aus 391	287(T)	Aus 4728	268

Aus Chart	Notices
PNG 642	255
PNG 646	255, 286(P)
SLB 302	269

INT Chart	Notices
INT 601	268
INT 602	268
INT 603	283(T)
INT 604	283(T)
INT 620	283(T)
INT 621	283(T)
INT 622	283(T)
INT 643	268
INT 644	268, 306(T), 307(T)
INT 708	268
INT 709	268
INT 710	268
INT 721	265, 293(T)
INT 722	293(T)
INT 723	268, 293(T), 298(T)
INT 725	268, 295(T), 298(T)
INT 726	268, 295(T)
INT 727	268
INT 728	268

**254 AUSTRALIA - Products - New Charts and New Editions to be published shortly**

Australian Hydrographic Office

**New Charts to be published shortly**

<i>Chart</i>	<i>Title</i>	<i>Scale</i>	<i>Expected Publication Date</i>	<i>Remarks</i>
PNG 643	Papua New Guinea - North East Coast - Approaches to Lae	1:50 000	5 April 2019	Adoption of Papua New Guinea chart numbering. Replaces Aus 643. General updating throughout including latest bathymetric surveys.

**New Editions to be published shortly**

<i>Chart</i>	<i>Title</i>	<i>Scale</i>	<i>Expected Publication Date</i>	<i>Remarks</i>
AUS 32	Australia - North Coast - Western Australia - Cambridge Gulf Plans: Approaches to Wyndham Wharf Wyndham Wharf	1:75 000  1:37 500 1:7 500	5 April 2019	General updating throughout including latest bathymetric surveys
AUS 182	Australia - South Coast - Plans in Victoria - South East Coast Plans: Barry Beach Marine Terminal Lakes Entrance Lewis Channel Port Welshpool Port Albert Approaches to Port Albert	  1:12 500 1:10 000 1:25 000 1:7 500 1:7 500 1:15 000	5 April 2019	General updating throughout including latest bathymetric surveys

**Charts to be withdrawn**

<i>Chart</i>	<i>Remarks</i>
Aus 643	On publication of new chart PNG 643

**255 AUSTRALIA - Products - New Charts, New Editions, Withdrawn Charts**

Australian Hydrographic Office

**New Charts**

<i>Chart</i>	<i>Title and Geographical limits</i>	<i>Scale</i>	<i>Publication Date</i>	<i>Remarks</i>
PNG 642	Papua New Guinea - North East Coast - Port of Lae <b>Edition 1</b>	1:7 500	22 Mar 2019	Adoption of Papua New Guinea chart numbering. General updating throughout including latest bathymetric surveys.
PNG 646	Papua New Guinea - North Coast - Approaches to Madang Plan: Madang Harbour <b>Edition 1</b>	1:37 500  1:7 500	22 Mar 2019	Adoption of Papua New Guinea chart numbering. General updating throughout including latest bathymetric surveys.

**New Electronic Navigation Chart (Aus ENC)**

<i>Cell Name</i>	<i>Title</i>	<i>Publication Date</i>	<i>Remarks</i>
NIL			

**New Editions and Withdrawn Charts**

<i>Chart</i>	<i>Title</i>	<i>Scale</i>	<i>Publication Date</i>	<i>Remarks</i>
Aus 59	Australia - North West Coast - Western Australia - Port of Dampier (Northern Sheet) <b>Edition 4</b>	1:10 000	22 Mar 2019	General updating throughout including latest bathymetric surveys. <b>Chart Aus 59 Edition 3 dated 9 September 2011 is now superseded and must be withdrawn from use.</b>
Aus 60	Australia - North West Coast - Western Australia - Port of Dampier (Southern Sheet) Plan: Kaiser Marina <b>Edition 4</b>	1:10 000  1:10 000	22 Mar 2019	General updating throughout including latest bathymetric surveys. <b>Chart Aus 60 Edition 3 dated 9 September 2011 is now superseded and must be withdrawn from use.</b>
Aus 642	Papua New Guinea - North East Coast - Port of Lae <b>Edition 1</b>	1:7 500	25 March 2016	<b>Aus 642 is withdrawn and replaced by PNG 642</b>
Aus 646	Papua New Guinea - North Coast - Approaches to Madang Plan: Madang Harbour <b>Edition 2</b>	1:37 500  1:7 500	16 November 2012	<b>Aus 646 is withdrawn and replaced by PNG 646</b>

**Admiralty publication**

<i>NP No</i>	<i>Title</i>	<i>Date</i>	<i>Remarks</i>
NP282(2)	Admiralty List of Radio Signals. Radio Aids to Navigation, Differential GPS (DGPS), Legal Time, Radio Time Signals and Electronic Position Fixing System. The Americas, Far East and Oceania.	28/3/2019	The 2018/2019 Edition of NP282 is cancelled.

**Chart permanently withdrawn**

Charts listed above as withdrawn no longer meet chart carriage requirements and should be marked as "superseded" and replaced with the new chart/ new edition listed prior to passage through the area covered by the new chart.

When placing orders with a chart agent between notice of forthcoming edition and its publication, mariners should advise whether their order pertains to the current edition or the new edition.

For further details refer to the AHO website at [www.hydro.gov.au](http://www.hydro.gov.au) for new edition and new chart stock arrival information.

**256 AUSTRALIA - Product - Amendment to Australian National Tide Tables 2019**  
Australian Hydrographic Office

**ANTT 2019**

Page 361

*Amend* Geraldton To Chart Datum AUS 81 NE 14 DEC 2018 0.0

Page 362

*Amend* Leggatt Island To Chart Datum AUS 270 NE 22 Feb 2019 0.0

Page 364

*Amend* Port Douglas To Chart Datum AUS 270 NE 22 Feb 2019 0.0

Page 365

*Amend* Port Moresby To Chart Datum AUS 622 NE 30 NOV 2018 SUBTRACT 0.1

Page 366

*Amend* Sydney To Chart Datum AUS 202 NE 14 DEC 2018 0.0

*Amend* Sydney To Chart Datum AUS 203 NE 05 OCT 2018 0.0

**257 AUSTRALIA - NEW SOUTH WALES - Trial Bay - Nav aids**  
NSW Roads and Maritime Services

**Aus 220 (Trial Bay) [211/2019]**

Insert	starboard lateral light beacon, <i>Fl.G.3s</i> , with topmark	30° 52'.632 S	153° 01'.006 E
	light, <i>F.WRG</i>	30° 52'.687 S	153° 00'.956 E
	dashed line in a direction 060.5° for a distance of 250m, thence a continuous line for 3490m, with legend 240.5°, emanating from light	30° 52'.687 S	153° 00'.956 E

**258 AUSTRALIA - QUEENSLAND - Brisbane River - Outer Bar Reach - Maintained depth limit; nav aids**  
Maritime Safety Queensland

**Aus 237 [1005/2018]**

Insert	accompanying block	27° 21'.40 S	153° 10'.33 E
--------	--------------------	--------------	---------------

**259 AUSTRALIA - QUEENSLAND - Howick Group - Coquet Island - Navline**  
Australian Maritime Safety Authority

**Aus 270 (Howick Group) [208/2019]**

Delete	dashed and continuous line with legend Coquet I Lt 138°, between	14° 27'.0 S	144° 54'.2 E
		14° 32'.5 S	144° 59'.2 E

**Aus 832 [951/2018]**

Delete	dashed and continuous line with legend 138°, between	14° 27'.0 S	144° 54'.2 E
		14° 32'.5 S	144° 59'.2 E

**Aus 833 [210/2019]**

Delete	dashed and continuous line with legend 138°, between	14° 27'.0 S	144° 54'.2 E
		14° 32'.5 S	144° 59'.2 E



**260 AUSTRALIA - QUEENSLAND - Lucinda - Light buoy moved**

Former Notice - 72(T)/2019 is cancelled  
Maritime Safety Queensland Notice 98/2019

**Aus 259 [55/2019]**

Move	light buoy	18° 30'.62 S	146° 23'.22 E
	to	18° 30'.45 S	146° 23'.20 E

**Aus 267 [103/2019]**

Move	light buoy	18° 30'.62 S	146° 23'.22 E
	to	18° 30'.447 S	146° 23'.201 E

**Aus 828 [1068/2018]**

Move	light buoy	18° 30'.62 S	146° 23'.22 E
	to	18° 30'.45 S	146° 23'.20 E

**261 AUSTRALIA - QUEENSLAND - Skardon River - Light buoy**

Maritime Safety Queensland Notice 125/2019

**Aus 701 [105/2019]**

Insert	special spherical light buoy, <i>Fl(5)</i> Y.20s, without topmark	11° 44'.83 S	141° 55'.10 E
--------	---	--------------	---------------

**262 PAPUA NEW GUINEA - Lae - Chart name**

Australian Hydrographic Office

**Aus 643 [714/2018]**

Amend	magenta legend to <i>PNG 642</i>	6° 45'.6 S	147° 00'.6 E
	magenta legend to <i>PNG 642</i>	7° 05'.7 S	147° 01'.2 E

**263 PAPUA NEW GUINEA - Madang Harbour - Chart Name**

Australian Hydrographic Office

**Aus 387 [9/2019]**

Amend	magenta legend to <i>PNG 646</i>	05° 03'.2 S	145° 52'.9 E
	magenta legend to <i>PNG 646</i>	05° 58'.6 S	145° 57'.0 E

**264 PAPUA NEW GUINEA - Wewak - Depths**

LADS Flight

**Aus 388 [443/2016]**

Insert	depth, <i>4m</i> , enclosed by contour	3° 30'.31 S	143° 34'.72 E
	depth, <i>8<sub>1</sub>m</i> , enclosed by contour	3° 34'.64 S	143° 42'.81 E

Delete	depth, <i>23<sub>5</sub>m</i>	3° 34'.7 S	143° 42'.6 E
--------	-------------------------------	------------	--------------

**Aus 389 [956/2018]**

Insert	depth, <i>4m</i> , enclosed by contour	3° 30'.31 S	143° 34'.72 E
	depth, <i>8<sub>1</sub>m</i> , enclosed by contour	3° 34'.64 S	143° 42'.81 E

Delete	depth, <i>23<sub>5</sub>m</i>	3° 34'.7 S	143° 42'.6 E
--------	-------------------------------	------------	--------------

**Aus 651 [106/2019]**

Insert	depth, <i>4m</i> , enclosed by contour	3° 30'.31 S	143° 34'.72 E
	depth, <i>9<sub>9</sub>m</i> , enclosed by contour	3° 31'.00 S	143° 36'.31 E
	depth, <i>8<sub>1</sub>m</i> , enclosed by contour	3° 34'.64 S	143° 42'.81 E
	depth, <i>8<sub>1</sub>m</i> , enclosed by contour	3° 32'.52 S	143° 36'.62 E

Replace	depth <i>15<sub>9</sub>m</i> , with depth, <i>9<sub>9</sub>m</i>	3° 26'.5 S	143° 33'.0 E
	depth <i>3<sub>4</sub>m</i> , with drying height, <i>5<sub>2</sub>m</i> enclosed by contour	3° 36'.8 S	143° 45'.6 E

Delete	depth, <i>21<sub>2</sub>m</i>	3° 30'.9 S	143° 36'.4 E
	depth, <i>17<sub>1</sub>m</i>	3° 32'.5 S	143° 36'.6 E

**265 AUSTRALIA - TIMOR SEA - Margaret Harries Banks - Depths**

CSIRO

**Aus 311 [563/2018]**

Insert	depth, 24 <sub>g</sub> m, enclosed by contour	10° 37'.65 S	128° 29'.47 E
--------	---	--------------	---------------

Delete	depth, 86m	10° 37'.3 S	128° 29'.7 E
--------	------------	-------------	--------------

**Aus 4721 (INT 721) [13/2019]**

Insert	depth, 24 <sub>g</sub> m, and extend contour N to enclose	10° 37'.7 S	128° 29'.5 E
--------	---	-------------	--------------

Delete	depth, 28m	10° 39'.9 S	128° 30'.1 E
--------	------------	-------------	--------------

**266 AUSTRALIA - WESTERN AUSTRALIA - Geelvink Channel - Depth**

CSIRO

**Aus 751 [1129/2018]**

Insert	depth, 26m, enclosed by contour	28° 25'.56 S	114° 05'.19 E
--------	---------------------------------	--------------	---------------

**267 AUSTRALIA - WESTERN AUSTRALIA - King George Sound - Anchor berths**

Department of Transport WA Notice 18/2019

**Aus 109 [215/2019]**

Insert	anchor berth, desig W, with 560m radius swinging circle	35° 04'.710 S	117° 59'.383 E
	anchor berth, desig Z, with 560m radius swinging circle	35° 04'.410 S	117° 57'.389 E
	anchor berth, desig X, with 560m radius swinging circle	35° 02'.010 S	117° 59'.988 E

**Aus 110 [1022/2018]**

Insert	anchor berth, desig W, with 560m radius swinging circle	35° 04'.710 S	117° 59'.383 E
	anchor berth, desig X, with 560m radius swinging circle	35° 02'.010 S	117° 59'.988 E
	anchor berth, desig Y, with 560m radius swinging circle	35° 03'.610 S	118° 00'.988 E
	anchor berth, desig Z, with 560m radius swinging circle	35° 04'.410 S	117° 57'.389 E

Delete	depth, 12 <sub>4</sub> m	35° 02'.0 S	118° 00'.0 E
--------	--------------------------	-------------	--------------

**268 AUSTRALIA - WESTERN AUSTRALIA - SOUTH AUSTRALIA - VICTORIA - NEW SOUTH WALES -  
Sumatera, Perth, Sydney - Submarine cable**

Alcatel Submarine Networks

**Aus 112 [NE 13/7/2018]**

Insert submarine cable, between

31° 51'.432 S	115° 40'.782 E
31° 52'.359 S	115° 40'.890 E
31° 52'.860 S	115° 41'.089 E
31° 53'.036 S	115° 41'.217 E
31° 53'.312 S	115° 41'.692 E
31° 53'.599 S	115° 42'.373 E
31° 54'.102 S	115° 43'.103 E
31° 54'.735 S	115° 43'.814 E
31° 55'.275 S	115° 44'.598 E
31° 55'.473 S	115° 45'.260 E
31° 51'.432 S	115° 40'.421 E
31° 52'.479 S	115° 40'.581 E
31° 53'.162 S	115° 40'.895 E
31° 53'.353 S	115° 41'.093 E
31° 53'.630 S	115° 41'.507 E
31° 53'.860 S	115° 42'.364 E
31° 53'.962 S	115° 42'.612 E
31° 54'.412 S	115° 43'.187 E
31° 55'.152 S	115° 44'.067 E
31° 55'.401 S	115° 44'.538 E
31° 55'.457 S	115° 44'.763 E
31° 55'.495 S	115° 45'.189 E

submarine cable, between

**Aus 197 [51/2019]**

Insert submarine cable, between

33° 55'.20 S	151° 15'.57 E
33° 55'.41 S	151° 15'.67 E
33° 55'.53 S	151° 15'.80 E
33° 55'.82 S	151° 16'.42 E
33° 56'.04 S	151° 17'.17 E
33° 56'.69 S	151° 18'.85 E
33° 57'.68 S	151° 21'.57 E
33° 57'.99 S	151° 21'.98 E
33° 58'.35 S	151° 22'.17 E
33° 59'.12 S	151° 22'.27 E
33° 59'.61 S	151° 22'.25 E
33° 59'.92 S	151° 22'.32 E
34° 00'.11 S	151° 22'.47 E
34° 00'.29 S	151° 22'.76 E
34° 00'.43 S	151° 23'.11 E
34° 00'.57 S	151° 23'.75 E
34° 00'.86 S	151° 24'.14 E
34° 01'.69 S	151° 24'.64 E
34° 05'.91 S	151° 28'.50 E

**Aus 335 [59/2019]**

Insert submarine cable, between

35° 35'.96 S	114° 07'.32 E
35° 40'.43 S	114° 16'.68 E

**Aus 349 [206/2018]**

Insert submarine cable, between

39° 44'.41 S	141° 21'.50 E
39° 37'.69 S	142° 09'.91 E
39° 36'.59 S	142° 23'.49 E
39° 34'.01 S	142° 32'.56 E
39° 32'.10 S	142° 47'.86 E
39° 31'.31 S	142° 51'.41 E
39° 29'.14 S	142° 55'.87 E
39° 23'.67 S	143° 20'.26 E
39° 21'.85 S	143° 29'.68 E
39° 21'.47 S	143° 47'.59 E
39° 21'.27 S	144° 03'.75 E
39° 21'.67 S	144° 44'.50 E

**Aus 357 [1026/2018]**

Insert submarine cable, between

39° 18'.50 S	146° 28'.25 E
39° 18'.18 S	146° 30'.16 E

268

**AUSTRALIA - WESTERN AUSTRALIA - SOUTH AUSTRALIA - VICTORIA - NEW SOUTH WALES -  
Sumatera, Perth, Sydney - Submarine cable**

submarine cable, between

39° 18'.32 S	146° 31'.66 E
39° 18'.50 S	146° 32'.16 E
39° 18'.50 S	146° 47'.18 E
39° 16'.08 S	147° 34'.32 E
39° 11'.84 S	148° 31'.13 E
39° 11'.07 S	148° 39'.14 E
39° 10'.73 S	148° 40'.06 E
39° 08'.72 S	148° 49'.33 E
39° 06'.77 S	148° 55'.63 E
39° 05'.58 S	149° 02'.10 E
39° 00'.43 S	149° 19'.52 E
38° 58'.73 S	149° 28'.00 E

**Aus 400 [NE 13/7/2018]**

Insert submarine cable, between

9° 30'.00 S	104° 12'.65 E
9° 32'.43 S	104° 12'.55 E
9° 46'.14 S	104° 14'.60 E
10° 06'.86 S	104° 16'.16 E
10° 12'.55 S	104° 16'.91 E
10° 24'.89 S	104° 15'.99 E
10° 41'.72 S	104° 17'.43 E
11° 01'.03 S	104° 24'.28 E
11° 04'.01 S	104° 26'.87 E
11° 12'.13 S	104° 37'.17 E
11° 19'.97 S	104° 41'.49 E
11° 26'.42 S	104° 42'.46 E
11° 30'.00 S	104° 41'.91 E

**Aus 487 [66/2019]**

Insert submarine cable, between

39° 26'.48 S	143° 08'.00 E
39° 21'.97 S	143° 28'.50 E
39° 21'.27 S	144° 03'.75 E
39° 22'.07 S	145° 25'.87 E
39° 19'.43 S	146° 26'.27 E
39° 18'.18 S	146° 30'.16 E
39° 19'.07 S	146° 33'.74 E
39° 16'.08 S	147° 34'.32 E
39° 11'.07 S	148° 39'.14 E
39° 02'.95 S	149° 11'.00 E

**Aus 489 [898/2018]**

Insert submarine cable, between

34° 19'.53 S	151° 36'.81 E
34° 23'.59 S	151° 35'.70 E
34° 27'.02 S	151° 36'.12 E
34° 30'.42 S	151° 37'.75 E
34° 41'.44 S	151° 46'.78 E
34° 48'.78 S	151° 50'.06 E
34° 59'.55 S	151° 50'.85 E
35° 12'.00 S	151° 47'.84 E

**Aus 754 [162/2019]**

Insert submarine cable, between

31° 41'.75 S	114° 51'.71 E
31° 42'.98 S	114° 54'.55 E
31° 43'.94 S	114° 59'.46 E
31° 48'.65 S	115° 12'.14 E
31° 49'.01 S	115° 22'.05 E
31° 48'.94 S	115° 24'.92 E
31° 47'.76 S	115° 29'.19 E
31° 47'.65 S	115° 29'.97 E
31° 47'.62 S	115° 38'.74 E
31° 47'.77 S	115° 39'.44 E
31° 48'.15 S	115° 40'.17 E
31° 48'.53 S	115° 40'.47 E
31° 52'.36 S	115° 40'.89 E
31° 53'.04 S	115° 41'.22 E
31° 53'.60 S	115° 42'.37 E
31° 55'.22 S	115° 44'.53 E
31° 43'.33 S	114° 51'.71 E
31° 43'.33 S	114° 51'.73 E

submarine cable, between

**AUSTRALIA - WESTERN AUSTRALIA - SOUTH AUSTRALIA - VICTORIA - NEW SOUTH WALES -  
Sumatera, Perth, Sydney - Submarine cable**

31° 44'.49 S	114° 57'.64 E
31° 49'.29 S	115° 12'.16 E
31° 49'.20 S	115° 14'.54 E
31° 49'.39 S	115° 15'.90 E
31° 49'.65 S	115° 23'.35 E
31° 49'.47 S	115° 25'.56 E
31° 48'.30 S	115° 30'.07 E
31° 48'.12 S	115° 38'.78 E
31° 48'.45 S	115° 39'.53 E
31° 48'.93 S	115° 39'.87 E
31° 49'.89 S	115° 40'.19 E
31° 52'.48 S	115° 40'.58 E
31° 53'.16 S	115° 40'.90 E
31° 53'.63 S	115° 41'.51 E
31° 53'.96 S	115° 42'.61 E
31° 55'.15 S	115° 44'.07 E
31° 55'.43 S	115° 44'.59 E
31° 55'.48 S	115° 44'.97 E

**Aus 787 [826/2017]**

Insert submarine cable, between

39° 34'.00 S	142° 32'.60 E
39° 32'.10 S	142° 47'.86 E
39° 31'.31 S	142° 51'.41 E
39° 29'.14 S	142° 55'.87 E
39° 23'.67 S	143° 20'.26 E
39° 21'.85 S	143° 29'.68 E
39° 21'.80 S	143° 32'.00 E

**Aus 789 [1059/2015]**

Insert submarine cable, between

39° 22'.18 S	143° 28'.00 E
39° 21'.85 S	143° 29'.68 E
39° 21'.47 S	143° 47'.59 E
39° 21'.27 S	144° 03'.75 E
39° 21'.50 S	144° 27'.50 E

**Aus 802 [864/2018]**

Insert submarine cable, between

39° 20'.93 S	145° 52'.00 E
39° 19'.43 S	146° 26'.27 E
39° 18'.50 S	146° 28'.24 E
39° 18'.18 S	146° 30'.16 E
39° 18'.32 S	146° 31'.66 E
39° 19'.07 S	146° 33'.74 E
39° 16'.49 S	147° 26'.00 E

**Aus 808 [51/2019]**

Insert submarine cable, between

33° 55'.20 S	151° 15'.57 E
33° 55'.53 S	151° 15'.80 E
33° 55'.82 S	151° 16'.42 E
33° 57'.68 S	151° 21'.57 E
33° 57'.99 S	151° 21'.98 E
33° 58'.35 S	151° 22'.17 E
33° 59'.92 S	151° 22'.32 E
34° 00'.29 S	151° 22'.76 E
34° 00'.57 S	151° 23'.75 E
34° 00'.86 S	151° 24'.14 E
34° 01'.69 S	151° 24'.64 E
34° 09'.52 S	151° 31'.88 E
34° 13'.06 S	151° 36'.64 E
34° 14'.27 S	151° 37'.59 E
34° 15'.68 S	151° 37'.82 E
34° 23'.59 S	151° 35'.70 E
34° 27'.02 S	151° 36'.12 E
34° 30'.42 S	151° 37'.75 E
34° 32'.39 S	151° 39'.37 E

**Aus 4601 (INT 601) [867/2017]**

Insert submarine cable, between

34° 19'.6 S	151° 36'.9 E
34° 29'.6 S	151° 36'.9 E
34° 41'.4 S	151° 46'.8 E

268

**AUSTRALIA - WESTERN AUSTRALIA - SOUTH AUSTRALIA - VICTORIA - NEW SOUTH WALES -  
Sumatera, Perth, Sydney - Submarine cable**

35° 00'.4 S 151° 51'.3 E  
 38° 15'.9 S 150° 50'.1 E  
 38° 32'.5 S 150° 36'.0 E  
 38° 43'.3 S 150° 14'.9 E  
 39° 11'.1 S 148° 39'.1 E  
 39° 22'.1 S 145° 25'.9 E  
 39° 21'.9 S 143° 29'.7 E  
 39° 32'.7 S 142° 43'.2 E  
 39° 34'.6 S 142° 30'.0 E

**Aus 4602 (INT 602) [50/2018]**

Insert submarine cable, between

34° 19'.6 S 151° 36'.9 E  
 34° 29'.6 S 151° 36'.9 E  
 34° 41'.4 S 151° 46'.8 E  
 35° 00'.4 S 151° 51'.3 E  
 35° 17'.4 S 151° 46'.0 E

**Aus 4643 (INT 643) [475/2018]**

Insert submarine cable, between

34° 19'.6 S 151° 36'.9 E  
 34° 24'.3 S 151° 35'.4 E  
 34° 29'.6 S 151° 36'.9 E  
 34° 41'.4 S 151° 46'.8 E  
 34° 48'.8 S 151° 50'.1 E  
 35° 00'.4 S 151° 51'.3 E  
 38° 15'.9 S 150° 50'.1 E  
 38° 32'.5 S 150° 36'.0 E  
 38° 43'.3 S 150° 14'.9 E  
 38° 52'.2 S 149° 50'.0 E

**Aus 4644 (INT 644) [1025/2017]**

Insert submarine cable, between

39° 21'.8 S 143° 30'.0 E  
 39° 21'.2 S 144° 01'.7 E  
 39° 22'.1 S 145° 25'.9 E  
 39° 19'.5 S 146° 25'.9 E  
 39° 18'.2 S 146° 30'.2 E  
 39° 19'.1 S 146° 33'.9 E  
 39° 16'.1 S 147° 34'.3 E  
 39° 11'.1 S 148° 39'.1 E  
 38° 55'.1 S 149° 41'.9 E  
 38° 43'.3 S 150° 14'.9 E  
 38° 32'.5 S 150° 36'.0 E  
 38° 15'.9 S 150° 50'.1 E  
 37° 00'.0 S 151° 13'.9 E

**Aus 4708 (INT 708) [1129/2018]**

Insert submarine cable, between

31° 43'.2 S 114° 56'.0 E  
 31° 16'.1 S 114° 11'.2 E  
 31° 12'.1 S 113° 47'.4 E  
 29° 43'.9 S 112° 30'.8 E  
 28° 21'.5 S 111° 12'.2 E  
 27° 31'.5 S 110° 41'.1 E  
 26° 43'.6 S 110° 24'.2 E  
 24° 49'.5 S 108° 52'.9 E  
 21° 35'.0 S 107° 35'.2 E  
 12° 53'.6 S 104° 35'.7 E  
 12° 01'.1 S 104° 32'.8 E  
 11° 26'.4 S 104° 42'.5 E  
 10° 41'.7 S 104° 17'.4 E  
 07° 57'.6 S 104° 11'.0 E  
 07° 12'.4 S 104° 21'.8 E  
 submarine cable, between  
 31° 43'.2 S 114° 45'.3 E  
 31° 50'.2 S 113° 57'.0 E  
 32° 04'.9 S 113° 41'.5 E  
 33° 32'.8 S 113° 21'.5 E  
 34° 27'.9 S 113° 30'.4 E  
 34° 46'.9 S 113° 53'.4 E  
 35° 30'.3 S 113° 59'.5 E  
 35° 44'.1 S 114° 26'.3 E  
 36° 20'.0 S 116° 56'.6 E

268

**AUSTRALIA - WESTERN AUSTRALIA - SOUTH AUSTRALIA - VICTORIA - NEW SOUTH WALES -  
Sumatera, Perth, Sydney - Submarine cable**

**Aus 4709 (INT 709) [159/2019]**

Insert submarine cable, between

31° 00'.0 S	113° 36'.8 E
31° 12'.1 S	113° 47'.4 E
31° 16'.1 S	114° 11'.2 E
31° 43'.2 S	114° 56'.0 E
31° 43'.2 S	114° 45'.3 E
31° 50'.2 S	113° 57'.0 E
32° 04'.9 S	113° 41'.5 E
33° 32'.8 S	113° 21'.5 E
34° 27'.9 S	113° 30'.4 E
34° 46'.9 S	113° 53'.4 E
35° 30'.3 S	113° 59'.5 E
35° 44'.1 S	114° 26'.3 E
38° 02'.0 S	124° 04'.2 E
40° 11'.4 S	136° 54'.9 E
40° 04'.6 S	139° 06'.5 E
39° 32'.7 S	142° 43'.2 E
39° 21'.9 S	143° 29'.7 E
39° 22'.1 S	145° 14'.1 E

submarine cable, between

**Aus 4710 (INT 710) [220/2019]**

Insert submarine cable, between

34° 15'.0 S	113° 28'.3 E
34° 27'.9 S	113° 30'.4 E
34° 46'.9 S	113° 53'.4 E
35° 30'.3 S	113° 59'.5 E
35° 44'.1 S	114° 26'.3 E
36° 28'.0 S	117° 30'.0 E

**Aus 4723 (INT 723) [NE 13/7/2018]**

Insert submarine cable, between

22° 25'.8 S	107° 58'.0 E
22° 40'.0 S	108° 03'.1 E

**Aus 4725 (INT 725) [1129/2018]**

Insert submarine cable, between

20° 30'.0 S	107° 13'.6 E
22° 01'.6 S	107° 44'.4 E
22° 22'.4 S	107° 56'.7 E
24° 28'.6 S	108° 42'.2 E
25° 01'.4 S	109° 01'.4 E
25° 46'.9 S	109° 36'.1 E
26° 43'.6 S	110° 24'.2 E
27° 01'.0 S	110° 27'.7 E
27° 31'.5 S	110° 41'.1 E
28° 21'.5 S	111° 12'.2 E
29° 43'.9 S	112° 30'.8 E
31° 01'.4 S	113° 37'.5 E
31° 13'.4 S	113° 49'.4 E
31° 16'.5 S	113° 58'.0 E
31° 15'.9 S	114° 09'.7 E
31° 19'.6 S	114° 18'.3 E
31° 26'.9 S	114° 26'.7 E
31° 31'.0 S	114° 38'.5 E
31° 41'.2 S	114° 50'.5 E
31° 46'.3 S	115° 05'.6 E
35° 00'.0 S	113° 56'.4 E
34° 46'.9 S	113° 53'.4 E
34° 31'.6 S	113° 33'.0 E
34° 21'.6 S	113° 27'.2 E
33° 58'.3 S	113° 26'.8 E
33° 32'.8 S	113° 21'.5 E
33° 10'.2 S	113° 28'.0 E
32° 50'.8 S	113° 29'.4 E
32° 04'.9 S	113° 41'.5 E
31° 56'.4 S	113° 48'.2 E
31° 50'.2 S	113° 57'.0 E
31° 47'.7 S	114° 05'.3 E
31° 48'.5 S	114° 14'.4 E
31° 47'.0 S	114° 25'.4 E
31° 43'.4 S	114° 41'.4 E

submarine cable, between

268

**AUSTRALIA - WESTERN AUSTRALIA - SOUTH AUSTRALIA - VICTORIA - NEW SOUTH WALES -  
Sumatera, Perth, Sydney - Submarine cable**

31° 43'.1 S 114° 50'.5 E

**Aus 4726 (INT 726) [159/2019]**

Insert submarine cable, between

32° 00'.0 S 113° 45'.3 E  
 32° 04'.9 S 113° 41'.5 E  
 32° 50'.8 S 113° 29'.4 E  
 33° 10'.2 S 113° 28'.0 E  
 33° 32'.8 S 113° 21'.5 E  
 33° 58'.3 S 113° 26'.8 E  
 34° 21'.6 S 113° 27'.2 E  
 34° 31'.6 S 113° 33'.0 E  
 34° 46'.9 S 113° 53'.4 E  
 35° 01'.6 S 113° 56'.7 E  
 35° 22'.2 S 113° 56'.0 E  
 35° 30'.3 S 113° 59'.5 E  
 35° 35'.9 S 114° 07'.2 E  
 35° 44'.1 S 114° 26'.3 E  
 36° 06'.0 S 115° 47'.0 E  
 36° 59'.0 S 119° 41'.2 E  
 37° 10'.3 S 120° 12'.9 E  
 37° 25'.1 S 121° 16'.7 E  
 37° 35'.8 S 122° 25'.5 E  
 37° 44'.1 S 123° 00'.0 E

**Aus 4727 (INT 727) [1128/2018]**

Insert submarine cable, between

37° 18'.9 S 120° 50'.0 E  
 37° 25'.1 S 121° 16'.7 E  
 37° 35'.8 S 122° 25'.5 E  
 37° 45'.8 S 123° 07'.0 E  
 37° 57'.2 S 123° 36'.2 E  
 38° 02'.0 S 124° 04'.2 E  
 38° 02'.9 S 124° 38'.8 E  
 38° 19'.2 S 125° 44'.7 E  
 38° 28'.5 S 126° 59'.5 E  
 38° 37'.2 S 127° 26'.9 E  
 38° 42'.1 S 127° 57'.4 E  
 38° 42'.5 S 128° 22'.4 E  
 39° 07'.5 S 130° 28'.6 E

**Aus 4728 (INT 728) [1134/2018]**

Insert submarine cable, between

39° 58'.0 S 135° 28'.0 E  
 40° 11'.4 S 136° 54'.9 E  
 40° 10'.5 S 137° 47'.0 E  
 40° 04'.5 S 138° 27'.9 E  
 40° 04'.6 S 139° 06'.5 E  
 39° 49'.6 S 140° 42'.0 E  
 39° 32'.7 S 142° 43'.2 E  
 39° 21'.9 S 143° 29'.7 E  
 39° 21'.2 S 144° 01'.7 E  
 39° 21'.8 S 145° 00'.0 E

269

**SOLOMON ISLANDS - Marovo Lagoon - Reported anchorages removed**

Solomon Islands Maritime Safety Administration

**SLB 302 [168/2019]**Delete reported anchorage  
reported anchorage

08° 30'.8 S 158° 04'.1 E  
 08° 31'.0 S 158° 05'.1 E



**270(T)/2019 AUSTRALIA - QUEENSLAND - Bowen - Harbour works completed**

Former Notice - 968(T)/2016 is cancelled  
 Maritime Safety Queensland Notice 380(T)/2016

Cancel this notice on receipt.

**Chart formerly affected - Aus 268****271(T)/2019 AUSTRALIA - QUEENSLAND - Brisbane River - Inner Bar Reach - Light buoy**

Former Notice - 24(T)/2019 is cancelled  
 Maritime Safety Queensland

Cancel this notice on receipt.

**Chart formerly affected - Aus 236 - Aus 237****272(T)/2019 AUSTRALIA - QUEENSLAND - Hay Point - Dredging operations**

Maritime Safety Queensland Notices 94(T)/2019

Vessel *THSD Brisbane* and support vessels are conducting dredging operations at the tug harbour (21° 17'.40 S 149° 18'.00 E) and in an area bounded by the following positions:

21° 16'.46 S 149° 19'.07 E  
 21° 14'.78 S 149° 25'.50 E  
 21° 14'.49 S 149° 25'.40 E  
 21° 15'.85 S 149° 19'.50 E  
 21° 14'.04 S 149° 18'.21 E  
 21° 14'.23 S 149° 17'.82 E.

An exclusion exists in the spoil ground (21° 11'.60 S 149° 18'.80 E), in which spoil will be deposited.

Mariners are advised to navigate with caution in the area.

**Chart temporarily affected - Aus 249 - Aus 250****273(T)/2019 AUSTRALIA - QUEENSLAND - Karumba - Alligator Point - Wreck**

Maritime Safety Queensland Notice 129(T)/2019

A wreck marked by a special light buoy, *Fl.2-5s*, exists in position 17° 27'.43 S 140° 48'.46 E.

**Chart temporarily affected - Aus 6****274(T)/2019 AUSTRALIA - QUEENSLAND - Mackay - Harbour works completed**

Former Notice - 73(T)/2019 is cancelled  
 Maritime Safety Queensland

Cancel this notice on receipt.

**Chart formerly affected - Aus 250**

**275(T)/2019 AUSTRALIA - QUEENSLAND - Molle Channel - Subsea operations; pipeline operations**

Maritime Safety Queensland Notice 114(T)/2019

Tug *Mighty Chiefton* and barge *Triton* are conducting subsea and pipeline operations in an area bounded by the following positions:

20° 16'.52 S 148° 47'.28 E  
 20° 15'.63 S 148° 47'.50 E  
 20° 15'.44 S 148° 48'.73 E  
 20° 15'.53 S 148° 48'.76 E  
 20° 16'.03 S 148° 47'.49 E  
 20° 16'.58 S 148° 47'.36 E.

Vessels will display appropriate lights and shapes and will monitor VHF CH 10 & 16.

Mariners are advised to navigate with caution in the area.

**Chart temporarily affected - Aus 252 - Aus 253**

**276(T)/2019 AUSTRALIA - QUEENSLAND - Moreton Bay - Manly Boat Harbour - Dredging operations**

*Former Notice - 121(T)/2019 is cancelled*

Maritime Safety Queensland Notice 121(T)/2019

The barge *IBIS II* and tug *Titan* along with support vessels are conducting dredging operations in the entrance of Manly Boat Harbour (27° 27'.03 S 153° 11'.63 E).

The barges and support craft will monitor VHF Ch 13.

Mariners are advised to navigate with caution in the area.

**Chart temporarily affected - Aus 236**

**277(T)/2019 AUSTRALIA - QUEENSLAND - Nelly Bay - Light beacon restored**

*Former Notice - 122(T)/2019 is cancelled*

Maritime Safety Queensland

Cancel this notice on receipt.

**Chart formerly affected - Aus 256**

**278(T)/2019 AUSTRALIA - QUEENSLAND - Noosa Head - Scientific instrument**

Maritime Safety Queensland Notice 108(T)/2019

A subsurface scientific instrument exists in position 26° 22'.72 S 153° 05'.59 E.

**Chart temporarily affected - Aus 815**

**279(T)/2019 AUSTRALIA - QUEENSLAND - Rattlesnake Island - Live firing**

Maritime Safety Queensland Notice 126(T)/2019

Live firing activities will be conducted within a 5M radius of position 19° 02'.27 S 146° 36'.43 E on 25 March 2019.

Mariners are advised to navigate with caution in the area.

**Chart temporarily affected - Aus 256 - Aus 827**

**280(T)/2019 AUSTRALIA - QUEENSLAND - Rosslyn Bay - Shoaling**

*Former Notice* - 978(T)/2018 is cancelled  
Maritime Safety Queensland Notice 106(T)/2019

Shoaling, with least depth 1.5m, exists within the entrance channel and Rosslyn Bay boat harbour (23° 09'.52 S 150° 47'.27 E).

Mariners are advised to navigate with caution in the area.

**Chart temporarily affected - Aus 247**

**281(T)/2019 AUSTRALIA - QUEENSLAND - Weipa - Hey River - Exclusion zone**

*Former Notice* - 411(T)/2018 is cancelled  
Maritime Safety Queensland

Cancel this notice on receipt.

**Chart formerly affected - Aus 4**

**282(T)/2019 AUSTRALIA - QUEENSLAND - Weipa - Dredging operations completed**

*Former Notice* - 293(T)/2018 is cancelled  
Maritime Safety Queensland

Cancel this notice on receipt.

**Chart formerly affected - Aus 4**

**283(T)/2019 PAPUA NEW GUINEA - Cape Ward Hunt - Light unlit**

National Maritime Safety Authority PNG Coastal Navigation Warning 15/2019

The light, *Fl.4s 65m 10M* (8° 03'.69 S 148° 07'.68 E), is unlit.

**Chart temporarily affected - Aus 521 - Aus 522 - Aus 4603 (INT 603) - Aus 4604 (INT 604) - Aus 4620 (INT 620) - Aus 4621 (INT 621) - Aus 4622 (INT 622)**

**284(T)/2019 PAPUA NEW GUINEA - Lae - Infrastructure; coastline charted**

*Former Notice* - 531(P)/2017 is cancelled  
National Maritime Safety Authority PNG

Cancel this notice on receipt.

**Chart formerly affected - Aus 642 - Aus 643**

**285(T)/2019 PAPUA NEW GUINEA - Lombrum Bay - Lights relit**

*Former Notice* - 244(T)/2019 is cancelled  
National Maritime Safety Authority PNG

Cancel this notice on receipt.

**Chart formerly affected - Aus 662**

**286(P)/2019 PAPUA NEW GUINEA - Madang Harbour - Shoaling**  
LADS Flight

Latest survey shows shoaler depths than those charted may exist in an area bounded by the following positions:

05° 04'.51 S 145° 48'.06 E  
05° 11'.75 S 145° 47'.82 E  
05° 11'.91 S 145° 49'.61 E  
05° 10'.14 S 145° 50'.36 E  
05° 04'.14 S 145° 48'.99 E.

Mariners are advised to navigate with caution in the area.

Charts will be updated in due course.

**Chart which will be affected - PNG 646**

**287(T)/2019 PAPUA NEW GUINEA - Manus Island - Light relit**

*Former Notice* - 245(T)/2019 is cancelled

National Maritime Safety Authority PNG Coastal Navigation Warning 13/2019

Cancel this notice on receipt.

**Chart formerly affected - Aus 391**

**288(T)/2019 PAPUA NEW GUINEA - Port Moresby - Harbour works; horizontal datum error corrected**

*Former Notice* - 144(P)/2016 is cancelled

Australian Geospatial-Intelligence Organisation

Cancel this notice on receipt.

**Chart formerly affected - Aus 622**

**289(T)/2019 PAPUA NEW GUINEA - Veale Reef - Light unlit**

National Maritime Safety Authority PNG

The light, *Fl.2-5s 9m 10M* (9° 11'.93 S 149° 28'.71 E), is unlit.

**Chart temporarily affected - Aus 519 - Aus 520**

**290(T)/2019 AUSTRALIA - WESTERN AUSTRALIA - Alkimos Reef - Drilling operations completed**

*Former Notice* - 1038(T)/2018 is cancelled

Department of Transport WA

Cancel this notice on receipt.

**Chart formerly affected - Aus 754**

**291(T)/2019 AUSTRALIA - WESTERN AUSTRALIA - Barrow Island - Well abandonment works northwestwards**

Chevron Australia

Sixteen anchors and mooring lines have been installed around the well in position 20° 24'.49 S 114° 50'.95 E.

Mariners are advised to navigate with caution in the area.

**Chart temporarily affected - Aus 328**

**292(T)/2019 AUSTRALIA - WESTERN AUSTRALIA - Broome - Light beacon removed**  
Kimberley Ports Authority Notice 6/2019

Works associated with the removal of Channel Rock isolated danger beacon, *Fl(2)5s 7m 3M*, (18° 00'.60 S 122° 12'.93 E) are in progress. A special light buoy, *Fl(2)5s* exists in close proximity.

An exclusion zone of 150m exists. Mariners are requested to contact Broome Port on VHF Ch 14 if there is a need to enter the exclusion zone.

Mariners are advised to navigate with caution in the area.

**Chart temporarily affected - Aus 50 - Aus 51**

**293(T)/2019 AUSTRALIA - WESTERN AUSTRALIA - Browse Island to Rankin Bank - Drilling and survey operations**  
Woodside Energy Ltd

Vessel *Outer Limit* is conducting drilling operations and an AUV is conducting survey operations in an area bounded by the following positions:

13° 35'.32 S 123° 32'.76 E  
19° 32'.92 S 116° 01'.65 E  
19° 53'.21 S 116° 15'.49 E  
13° 52'.83 S 123° 58'.43 E  
13° 35'.32 S 123° 32'.76 E.

**Chart temporarily affected - Aus 48 - Aus 319 - Aus 320 - Aus 322 - Aus 323 - Aus 325 - Aus 326 - Aus 327 - Aus 741 - Aus 4721 (INT 721) - Aus 4722 (INT 722) - Aus 4723 (INT 723)**

**294(T)/2019 AUSTRALIA - WESTERN AUSTRALIA - Dampier Archipelago - Roly Rock - Drill rig moved**  
*Former Notice - 132(T)/2019* is cancelled  
MODU *ENSCO 107*

Cancel this notice on receipt.

**Chart formerly affected - Aus 57 - Aus 327 - Aus 741 - Aus 742**

**295(T)/2019 AUSTRALIA - WESTERN AUSTRALIA - Five Fathom Bank - Military exercise westwards completed**  
*Former Notice - 86(T)/2019* is cancelled  
Department of Defence

Cancel this notice on receipt.

**Chart formerly affected - Aus 112 - Aus 117 - Aus 335 - Aus 753 - Aus 754 - Aus 755 - Aus 756 - Aus 4725 (INT 725) - Aus 4726 (INT 726)**

**296(T)/2019 AUSTRALIA - WESTERN AUSTRALIA - Geraldton - Champion Bay - Light buoys restored**  
*Former Notice - 1040(T)/2018* is cancelled  
Mid West Ports Notice 7/2019

Cancel this notice on receipt.

**Chart formerly affected - Aus 81 - Aus 751**

**297(T)/2019 AUSTRALIA - WESTERN AUSTRALIA - Montebello Islands - Survey operations**

Chevron Australia Pty Ltd

A survey vessel and an AUV are conducting survey operations in an area bounded by the following positions:

19° 46'.7 S 115° 16'.0 E  
 20° 35'.8 S 114° 50'.0 E  
 21° 11'.1 S 114° 45'.6 E  
 21° 28'.6 S 114° 49'.1 E  
 21° 26'.2 S 114° 51'.9 E  
 20° 36'.9 S 114° 55'.1 E  
 19° 58'.9 S 115° 20'.4 E  
 19° 56'.1 S 115° 27'.8 E.

**Chart temporarily affected - Aus 327 - Aus 328 - Aus 743 - Aus 744**

**298(T)/2019 AUSTRALIA - WESTERN AUSTRALIA - North West Cape - Drill rig northwestwards**

Former Notice - 39(T)/2019 is cancelled

Australian Maritime Safety Authority Auscoast Warning 70/2019

Drill rig *Ensco DPS-1* is conducting drilling operations in position 21° 30'.70 S 113° 51'.00 E.

**Chart temporarily affected - Aus 328 - Aus 329 - Aus 4723 (INT 723) - Aus 4725 (INT 725)**

**299(T)/2019 AUSTRALIA - WESTERN AUSTRALIA - Rowley Shoals - Scientific instruments**

Former Notice - 196(T)/2019 is cancelled

University of Western Australia

Scientific instruments exist as follows:

<i>Position</i>	<i>Remarks</i>
17° 46'.66 S 118° 59'.23 E	19m below surface
17° 58'.17 S 119° 07'.78 E	18m below surface
18° 00'.45 S 119° 10'.37 E	18m below surface
18° 00'.45 S 119° 10'.37 E	120m below surface
18° 00'.45 S 119° 10'.37 E	special spherical light buoy, <i>Fl.4s</i>

**Chart temporarily affected - Aus 325 - Aus 326**

**300(T)/2019 AUSTRALIA - WESTERN AUSTRALIA - Wyndham - Laffan Point - Light unlit**

CGL Wyndham Port

The lead light, *Iso.4s 6m 3M* (15° 18'.78 S 128° 03'.77 E) is unlit.

A lit raft, *Iso.4s*, exists in position 15° 18'.54 S 128° 04'.04 E.

**Chart temporarily affected - Aus 32**

**301(T)/2019 AUSTRALIA - VICTORIA - Cape Conran - Subsea operations; pipeline operations completed**

Former Notice - 88(T)/2019 is cancelled

Australian Maritime Safety Authority AUSCOAST 32/2019

Cancel this notice on receipt.

**Chart formerly affected - Aus 357**

**302(T)/2019 AUSTRALIA - VICTORIA - Golden Beach - Survey operations completed**

Former Notice - 137(T)/2019 is cancelled

AGR (Australia) Pty Ltd

Cancel this notice on receipt.

**Chart formerly affected - Aus 357 - Aus 487**

**303(T)/2019 AUSTRALIA - VICTORIA - Port Phillip - Patterson River - Harbour works completed**

Former Notice - 307(T)/2018 is cancelled  
Parks Victoria Notice 56/2019

Cancel this notice on receipt.

**Chart formerly affected - Aus 143****304(T)/2019 AUSTRALIA - VICTORIA - Port Phillip - Mordialloc - Light relit**

Former Notice - 199(T)/2019 is cancelled  
Parks Victoria Notice 52/2019

Cancel this notice on receipt.

**Chart formerly affected - Aus 143 - Aus 155****305(T)/2019 AUSTRALIA - VICTORIA - Western Port - Crib Point - Scientific Instruments**

Victorian Regional Channels Authority Notice 58/2019

Special light buoys exist as follows:

<i>Position</i>	<i>Remarks</i>
38° 21'.2 S 145° 13'.6 E	<i>Fl. Y. 5s</i>
38° 20'.9 S 145° 14'.5 E	<i>Fl. Y. 5s</i>
38° 21'.5 S 145° 15'.6 E	<i>Fl. Y. 5s</i>

**Chart temporarily affected - Aus 140 - Aus 143 - Aus 152****306(T)/2019 AUSTRALIA - BASS STRAIT - Cape Liptrap to Stanley - Survey operations**

Fugro Survey Pty Ltd

Vessel *MV Silver Star*, with a 300m towed array, is conducting a geophysical survey in an area bounded by the following positions:

38° 40'.5 S 145° 39'.5 E  
38° 51'.5 S 146° 10'.0 E  
40° 56'.0 S 145° 43'.0 E  
40° 48'.0 S 145° 13'.0 E.

Vessel will display appropriate lights and shapes.

Mariners are advised to navigate with caution in the area. 500m clearance is requested.

**Chart temporarily affected - Aus 178 - Aus 487 - Aus 790 - Aus 799 - Aus 801 - Aus 802 - Aus 4644 (INT 644)****307(T)/2019 AUSTRALIA - BASS STRAIT - Ninety Mile Beach to Four Mile Bluff - Survey operations**

Fugro Survey Pty Ltd, Maritime Safety Victoria Notice 50(T)/2019

Vessel *MV Calypso Star*, with a 300m towed array, and an ROV are conducting a geophysical survey between the following positions:

38° 28'.0 S 147° 06'.0 E  
38° 31'.5 S 147° 04'.5 E  
38° 35'.0 S 147° 04'.2 E  
39° 11'.5 S 146° 54'.8 E  
40° 58'.0 S 146° 50'.5 E  
41° 01'.8 S 146° 51'.6 E.

Vessel will display appropriate lights and shapes.

Mariners are advised to navigate with caution in the area. 500m clearance is requested.

**Chart temporarily affected - Aus 148 - Aus 167 - Aus 357 - Aus 487 - Aus 799 - Aus 802 - Aus 4644 (INT 644)**

**308(T)/2019 AUSTRALIA - TASMANIA - Devonport - Bed levelling completed**

*Former Notice* - 138(T)/2019 is cancelled

Marine and Safety Tasmania Notice M54/2019

Cancel this notice on receipt.

**Chart formerly affected - Aus 164**



II

**HYDROGRAPHIC REPORTS**

NIL

### III

#### **NAVIGATION WARNINGS**

The Australian Hydrographic Office will no longer compile Section III of the Australian Notices to Mariners. For the most up to date navigation warnings please refer to:

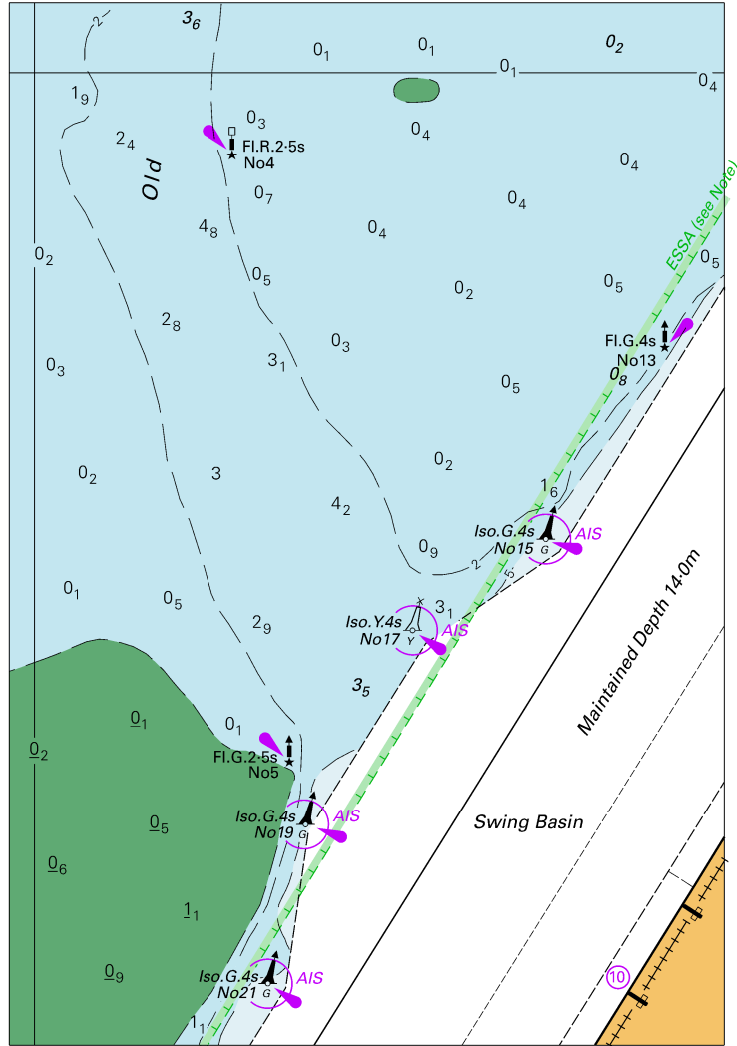
AMSA Navigation Warnings

<http://amsa.gov.au/search-and-rescue/distress-and-safety-comms/msi/msi-email/index.asp>

New Zealand Notices to Mariners (Navarea XIV warnings)

<http://www.linz.govt.nz/sea/maritime-safety/notices-mariners>

To accompany Australian Notice to Mariners 258/2019



Block for chart Aus 237

(94.6 x 137.9mm)

© Commonwealth of Australia 2019