



25 January 2019

Edition 2

AUSTRALIAN NOTICES TO MARINERS

Notices 50 - 97

Published fortnightly by the Australian Hydrographic Office



Australian Notices to Mariners are the authority for correcting charts and publications published by the Australian Hydrographic Office covering Australia, Papua New Guinea, Solomon Islands, Australian Antarctic Territory and Timor-Leste.

Commodore F.T. FREEMAN RAN
Hydrographer of Australia

SECTIONS.

- I. **Australian Notices to Mariners, including blocks and notes.**
- II. **Hydrographic Reports.**
- III. **Navigational Warnings.**

SUPPLEMENTS.

- I. **Tracings**
- II. **Cumulative List of Australian Notices to Mariners.**
- III. **Cumulative List of Temporary and Preliminary Australian Notices to Mariners.**
- IV. **Temporary and Preliminary Notices in force.**
- V. **Amendments to Admiralty List of Lights and Fog Signals (Vol K), Radio Signals (NP 281(2), 282, 283(2), 285, 286(4)) and Sailing Directions (NP 9, 13, 14, 15, 33, 34, 35, 36, 39, 44, 51, 60, 61, 62, 100, 136).**

© Commonwealth of Australia 2019

This work is copyright. Apart from any use permitted under the Copyright Act 1968, no part may be reproduced by any process, adapted, communicated or commercially exploited without prior written permission from The Commonwealth represented by the Australian Hydrographic Office.

IMPORTANT NOTICE

This edition of Notices to Mariners includes all significant information affecting AHO products which the AHO has become aware of since the last edition. All reasonable efforts have been made to ensure the accuracy and completeness of the information, including third party information, on which these updates are based. The AHO regards third parties from which it receives information as reliable, however the AHO cannot verify all such information and errors may therefore exist. The AHO does not accept liability for errors in third party information.

GENERAL INSTRUCTIONS

The substance of these notices should be inserted on the charts affected.

Bearings are referred to the true compass and are reckoned clockwise from North; those relating to lights are given as seen by an observer from seaward.

Positions quoted in notices relate to WGS84 which is the horizontal datum for all charts produced by the Australian Hydrographic Office.

The range quoted for a light is its nominal range.

Depths are with reference to the chart datum of each chart. Heights are above mean high water springs or mean higher high water, as appropriate.

The capital letter (P) or (T) after the number of any notice denotes a preliminary or temporary notice respectively, which are contained separately at the end of the permanent notices.

REPORTING OF DANGERS

Mariners are particularly requested to notify the AUSTRALIAN HYDROGRAPHIC OFFICE, Locked Bag 8801 Wollongong, NSW 2500 (Fax 02-4223 6599, e-mail datacentre@hydro.gov.au or, alternatively by filling in and submitting the [Hydrographic Notes](#) forms located on the web site – www.hydro.gov.au), immediately on the discovery of new dangers or suspected dangers to navigation. For changes or defects in aids to navigation notify AusSAR (Fax 02-6230 6868 or email rccaus@amsa.gov.au).

AUTHORISED USE

Copies of Australian notices are available free of charge from the Australian Hydrographic Office (AHO) website (www.hydro.gov.au) and through the eNotices (email) service (www.hydro.gov.au/enotices/enotices.htm).

Individual Notices may be copied for the purpose of inserting Notice substance on official charts and publications. Paper copies may be printed by chart agents and distributed to customers on a cost recovery basis. Participating chart agents are listed on the AHO website as providing a 'Paper Notices to Mariners' service (www.hydro.gov.au/webapps/jsp/agents/agents-list.jsp). Copies of the notices may not be sold for profit without prior written agreement.

NUMERICAL INDEX OF NOTICES TO MARINERS

Edition No 2

Notices	Aus Chart, INT Chart, ENC Cell, AHP, BA Pubs
50	Aus 5000, 5001
51	Aus 197, 198, 200, 808, 809
52	Aus 490, 816, 817
53	Aus 247, 265
54	Aus 816
55	Aus 259, 267
56	Aus 293, 299
57	Aus 386, 678
58	Aus 840
59	Aus 335, 336, 756, 757, 758
60	Aus 119
61	Aus 125, 781
62	Aus 122
63	Aus 154
64	Aus 150, 151
65	Aus 173
66	Aus 487, 798
67(T)	Aus 813
68(T)	Aus 269
69(T)	Aus 236, 238
70(T)	Aus 835, 839
71(T)	Aus 250
72(T)	Aus 259, 267, 828
73(T)	Aus 250
74(T)	Aus 250
75(T)	Aus 235
76(T)	Aus 257
77(T)	Aus 252, 253, 269, 824
78(P)	Aus 391, 662
79(T)	Aus 399, 683, SLB 301
80(P)	Aus 386, 678
81(T)	Aus 25, 26, 28
82(T)	Aus 314, 4721, 4722, INT 721, 722
83(T)	Aus 73
84(T)	Aus 327, 741
85(T)	Aus 327, 741
86(T)	Aus 112, 117, 335, 753, 754, 755, 756, 4725, 4726, INT 725, 726
87(T)	Aus 312, 4721, INT 721
88(T)	Aus 357
89(T)	Aus 357, 487
90(T)	Aus 154
91(T)	Aus 157
92(T)	Aus 150
93(T)	Aus 163
94(P)	Aus 179, 798, 800
95(T)	Aus 172
96(T)	Aus 171, 796
97(T)	Aus 790

NUMERICAL INDEX OF CHARTS AFFECTED

Edition No 2

Aus Chart	Notices
Aus 25	81(T)
Aus 26	81(T)
Aus 28	81(T)
Aus 73	83(T)
Aus 112	86(T)
Aus 117	86(T)
Aus 119	60
Aus 122	62
Aus 125	61
Aus 150	64, 92(T)
Aus 151	64
Aus 154	63, 90(T)
Aus 157	91(T)
Aus 163	93(T)
Aus 171	96(T)
Aus 172	95(T)
Aus 173	65
Aus 179	94(P)
Aus 197	51
Aus 198	51
Aus 200	51
Aus 235	75(T)
Aus 236	69(T)
Aus 238	69(T)
Aus 247	53
Aus 250	71(T), 73(T), 74(T)
Aus 252	77(T)
Aus 253	77(T)
Aus 257	76(T)
Aus 259	55, 72(T)
Aus 265	53
Aus 267	55, 72(T)
Aus 269	68(T), 77(T)
Aus 293	56
Aus 299	56
Aus 312	87(T)
Aus 314	82(T)
Aus 327	84(T), 85(T)
Aus 335	59, 86(T)
Aus 336	59
Aus 357	88(T), 89(T)
Aus 386	57, 80(P)
Aus 391	78(P)
Aus 399	79(T)
Aus 487	66, 89(T)
Aus 490	52
Aus 662	78(P)
Aus 678	57, 80(P)
Aus 683	79(T)
Aus 741	84(T), 85(T)
Aus 753	86(T)
Aus 754	86(T)
Aus 755	86(T)
Aus 756	59, 86(T)

Aus Chart	Notices
Aus 757	59
Aus 758	59
Aus 781	61
Aus 790	97(T)
Aus 796	96(T)
Aus 798	66, 94(P)
Aus 800	94(P)
Aus 808	51
Aus 809	51
Aus 813	67(T)
Aus 816	52, 54
Aus 817	52
Aus 824	77(T)
Aus 828	72(T)
Aus 835	70(T)
Aus 839	70(T)
Aus 840	58
Aus 4721	82(T), 87(T)
Aus 4722	82(T)
Aus 4725	86(T)
Aus 4726	86(T)
Aus 5000	50
Aus 5001	50
SLB 301	79(T)

INT Chart	Notices
INT 721	82(T), 87(T)
INT 722	82(T)
INT 725	86(T)
INT 726	86(T)

50 AUSTRALIA - Products - New Charts, New Editions, Withdrawn Charts

Australian Hydrographic Service , UKHO

New Charts

<i>Chart</i>	<i>Title and Geographical limits</i>	<i>Scale</i>	<i>Publication Date</i>	<i>Remarks</i>
NIL				

New Electronic Navigation Chart (Aus ENC)

<i>Cell Name</i>	<i>Title</i>	<i>Publication Date</i>	<i>Remarks</i>
NIL			

New Editions and Withdrawn Charts

<i>Chart</i>	<i>Title</i>	<i>Scale</i>	<i>Publication Date</i>	<i>Remarks</i>
Aus 5000	Australian Hydrographic Office Index of Nautical Charts - Northern Portion 2019		25th January 2019	Aus 5000 2018 withdrawn
Aus 5001	Australian Hydrographic Office Index of Nautical Charts - Southern Portion 2019		25th January 2019	Aus 5001 2018 withdrawn

Admiralty publication

<i>NP No</i>	<i>Title</i>	<i>Date</i>	<i>Remarks</i>
NP83	ADMIRALTY List of Lights and Fog Signals Volume K Western Pacific Ocean, South of the Equator. Including Bismarck, Solomon, Coral and Tasman Seas. 2019/20 Edition.	31/01/2019	The 2018/19 Edition is cancelled.
NP284	ADMIRALTY List of Radio Signals. Meteorological Observation Stations. 2018/19 Edition.	31/01/2019	The 2017/18 Edition is cancelled.

Chart permanently withdrawn

Charts listed above as withdrawn no longer meet chart carriage requirements and should be marked as "superseded" and replaced with the new chart/ new edition listed prior to passage through the area covered by the new chart.

When placing orders with a chart agent between notice of forthcoming edition and its publication, mariners should advise whether their order pertains to the current edition or the new edition.

For further details refer to the AHS website at www.hydro.gov.au for new edition and new chart stock arrival information.

51 AUSTRALIA - NEW SOUTH WALES - Botany Bay to Port Jackson - Chart note

Port Authority of New South Wales

Note: position of existing chart notes may vary on certain charts.

Aus 197 [1061/2018]

Replace	SVTSA note with accompanying note	33° 29'.2 S	151° 12'.4 E
---------	-----------------------------------	-------------	--------------

Aus 198 [805/2018]

Replace	SVTSA note with accompanying note	33° 58'.6 S	151° 06'.6 E
---------	-----------------------------------	-------------	--------------

Aus 200 [1110/2018]

Replace	SVTSA note with accompanying note	33° 54'.3 S	151° 08'.1 E
---------	-----------------------------------	-------------	--------------

Aus 808 [1109/2018]

Replace	SVTSA note with accompanying note	34° 02'.0 S	150° 54'.5 E
---------	-----------------------------------	-------------	--------------

Aus 809 [1060/2018]

Replace	SVTSA note with accompanying note	33° 09'.0 S	151° 26'.5 E
---------	-----------------------------------	-------------	--------------

52 AUSTRALIA - QUEENSLAND - Breaksea Spit - Wreck

Former Notice - 25(T)/2018 is cancelled
Maritime Safety Queensland

Aus 490 [1115/2018]

Insert	depth, 138m, enclosed by danger circle with legend, <i>Wk</i>	24° 25'.71 S	153° 18'.33 E
--------	---	--------------	---------------

Aus 816 [951/2018]

Insert	depth, 138m, enclosed by danger circle with legend, <i>Wk</i>	24° 25'.71 S	153° 18'.33 E
--------	---	--------------	---------------

Aus 817 [1071/2018]

Insert	depth, 138m, enclosed by danger circle with legend, <i>Wk</i>	24° 25'.71 S	153° 18'.33 E
--------	---	--------------	---------------

53 AUSTRALIA - QUEENSLAND - Curtis Island - Obstruction

Australian Maritime Safety Authority

Aus 247 [1012/2018]

Insert	danger line between	23° 27'.26 S	151° 00'.96 E
		23° 26'.79 S	151° 01'.04 E
	danger line between	23° 26'.80 S	151° 01'.09 E
		23° 26'.94 S	151° 01'.12 E

Aus 265 [5/2019]

Insert	danger line between	23° 27'.255 S	151° 00'.956 E
		23° 26'.789 S	151° 01'.040 E
	danger line between	23° 26'.800 S	151° 01'.093 E
		23° 26'.833 S	151° 01'.100 E

54 AUSTRALIA - QUEENSLAND - Gardner Bank - Wreck

Former Notice - 1182(T)/2016 is cancelled
Maritime Safety Queensland

Aus 816 [52/2019]

Insert	depth, 36m, enclosed by danger circle with legend, <i>Wk</i>	25° 07'.85 S	153° 27'.39 E
--------	--	--------------	---------------

55 AUSTRALIA - QUEENSLAND - Lucinda - Depths

Former Notice - 375(P)/2017 is cancelled
Maritime Safety Queensland

Aus 259 [4/2019]

Insert	depth, 1 ₇ m, and extend contour S to enclose contour, between	18° 31'.35 S	146° 20'.16 E
		18° 31'.21 S	146° 20'.15 E
		18° 31'.19 S	146° 20'.28 E
		18° 31'.20 S	146° 20'.30 E
		18° 31'.22 S	146° 20'.30 E
		18° 31'.24 S	146° 20'.24 E
Delete	depth, 6 ₁ m contour, between	18° 31'.3 S	146° 20'.2 E
		18° 31'.21 S	146° 20'.16 E
		18° 31'.25 S	146° 20'.16 E

Aus 267 [4/2019]

Insert	drying height, 0 ₇ m, and extend contour E to enclose	18° 31'.208 S	146° 20'.294 E
	depth, 1 ₇ m, and extend contour S to enclose	18° 31'.347 S	146° 20'.159 E
Delete	depth, 0 ₂ m	18° 31'.22 S	146° 20'.21 E

56 AUSTRALIA - QUEENSLAND - Thursday Island - Port Kennedy - Mooring buoy

Former Notice - 833(T)/2016 is cancelled
Maritime Safety Queensland Notice 501/2018

Aus 293 [1063/2018]

Replace dolphin with lit red barrel mooring buoy, *Fl.Y.2.5s* 10° 35'.20 S 142° 13'.27 E

Aus 299 [1009/2018]

Replace dolphin with lit red barrel mooring buoy, *Fl.Y.2.5s* 10° 35'.20 S 142° 13'.27 E

57 PAPUA NEW GUINEA - Vitu Islands - Nomenclature

National Maritime Safety Authority PNG

Aus 386 [1240/2016]

Insert legend, *Silenge Island* 04° 38'.53 S 149° 18'.80 E

Amend legend to *Planet (Ngadola) Harbour* 04° 39'.1 S 149° 21'.2 E
 legend to *Cape Kuravu* 04° 37'.6 S 149° 24'.2 E
 legend to *Cape Kore* 04° 36'.3 S 149° 22'.2 E

Aus 678 [288/2016]

Amend legend to *Cape Kore* 04° 36'.96 S 149° 22'.92 E
 legend to *Cape Kuravu* 04° 37'.31 S 149° 22'.95 E
 legend to *Kore* 04° 37'.17 S 149° 22'.02 E

58 AUSTRALIA - TORRES STRAIT - Dalrymple Islet - Obstruction

HMAS Launceston

Aus 840 [951/2018]

Insert danger circle with legend *Obstn Rep (2019)*, centred on 9° 37'.34 S 143° 18'.58 E

59 AUSTRALIA - WESTERN AUSTRALIA - Cape Leeuwin - Traffic separation scheme note

Australian Maritime Safety Authority

Note: position of existing chart notes may vary on certain charts.

Aus 335 [1128/2018]

Replace TS note with accompanying note 34° 17'.0 S 115° 56'.0 E

Aus 336 [1128/2018]

Replace TS note with accompanying note 34° 44'.0 S 117° 20'.0 E

Aus 756 [1128/2018]

Replace TS note with accompanying note 33° 53'.0 S 115° 06'.0 E

Aus 757 [1128/2018]

Replace TS note with accompanying note 34° 30'.0 S 116° 00'.0 E

Aus 758 [1128/2018]

Replace TS note with accompanying note 34° 58'.0 S 116° 35'.5 E

60 AUSTRALIA - WESTERN AUSTRALIA - Esperance - Limpet Rock - Artificial reef

Subcon

Aus 119 [1128/2018]

Insert fish haven with minimum depth, *22_gm*, centred on 33° 52'.26 S 121° 58'.83 E

61 AUSTRALIA - SOUTH AUSTRALIA - Port Stanvac - Infrastructure, nav aids

Department of Planning, Transport and Infrastructure SA

Aus 125 (Port Stanvac) [320/2018]

Insert accompanying block 35° 06'.44 S 138° 28'.13 E

Delete chart note 35° 07'.59 S 138° 29'.00 E

Aus 781 [487/2018]

Insert accompanying block 35° 05'.5 S 138° 28'.0 E

62 AUSTRALIA - SOUTH AUSTRALIA - Thevenard - Yatala Channel - Recommended track

Department of Planning, Transport and Infrastructure SA Notice 4/2019

Aus 122 [154/2018]

Insert recommended track with legend, 053° - 233°, between 32° 12'.289 S 133° 34'.091 E

32° 11'.395 S 133° 35'.485 E

63 AUSTRALIA - VICTORIA - Port Phillip - Yarra River - Infrastructure; maintained depth

Port of Melbourne Corporation

Aus 154 [1133/2018]

Insert continuous line, between 37° 50'.071 S 144° 53'.942 E

37° 50'.068 S 144° 53'.908 E

37° 50'.071 S 144° 53'.908 E

37° 50'.074 S 144° 53'.942 E

continuous line, between 37° 50'.052 S 144° 53'.943 E

37° 50'.049 S 144° 53'.911 E

37° 50'.051 S 144° 53'.911 E

37° 50'.054 S 144° 53'.943 E

Delete maintained depth, 4,m 37° 49'.10 S 144° 54'.95 E

64 AUSTRALIA - VICTORIA - Western Port - North Arm - Light buoy*Former Notice - 585(T)/2017 is cancelled*

Parks Victoria Notice 410(T)/2018

Aus 150 [679/2018]

Replace beacon with, starboard lateral conical buoy, No 3, without topmark 38° 19'.6 S 145° 14'.8 E

Aus 151 [1135/2018]

Replace beacon with, starboard lateral conical buoy, No 3, without topmark 38° 19'.59 S 145° 14'.77 E

65 AUSTRALIA - TASMANIA - D'Entrecasteaux Channel - Three Hut Point - Light moved

Marine and Safety Tasmania

Aus 173 [23/2019]

Move light 43° 16'.14 S 147° 14'.52 E

to 43° 16'.11 S 147° 14'.57 E

66 AUSTRALIA - TASMANIA - Foster Islands - Rock

T White

Aus 487 [1026/2018]Replace depth, 3₈m, with underwater rock enclosed by danger circle, with legend 40° 42'.3 S 147° 57'.8 E*Rep (2019)***Aus 798 [777/2018]**Insert underwater rock enclosed by danger circle, with legend *Rep (2019)* 40° 42'.33 S 147° 58'.04 EDelete depth, 5₃m 40° 42'.3 S 147° 58'.2 E

67(T)/2019 AUSTRALIA - NEW SOUTH WALES - Ballina - Light buoy restored

Former Notice - 970(T)/2018 is cancelled
Manly Hydraulics Laboratory

Cancel this notice on receipt.

Chart formerly affected - Aus 813**68(T)/2019 AUSTRALIA - QUEENSLAND - Airlie Beach - Muddy Bay - Wreck salvaged**

Former Notice - 745(T)/2017 is cancelled
Maritime Safety Queensland

Cancel this notice on receipt.

Chart formerly affected - Aus 269**69(T)/2019 AUSTRALIA - QUEENSLAND - Brisbane River - Hamilton Reach - Harbour works**

Maritime Safety Queensland

The barge *ENVIRO 8* is conducting works associated with the demolition of small jetties in the vicinity of 27° 26'.55 S 153° 03'.66 E.

Mariners are advised to navigate with caution in the area.

Chart temporarily affected - Aus 236 - Aus 238**70(T)/2019 AUSTRALIA - QUEENSLAND - Cairncross Islets - Wreck; buoy**

Maritime Safety Queensland Notice 12(T)/2019

A wreck marked by an emergency wreck buoy exists in position 11° 19'.34 S 143° 01'.68 E.

Chart temporarily affected - Aus 835 - Aus 839**71(T)/2019 AUSTRALIA - QUEENSLAND - Hay Point - Obstructions removed**

Former Notice - 20(T)/2017 is cancelled
Maritime Safety Queensland

Cancel this notice on receipt.

Chart formerly affected - Aus 250**72(T)/2019 AUSTRALIA - QUEENSLAND - Lucinda - Light buoy off station**

Maritime Safety Queensland Notice 512(T)/2018

The isolated danger light buoy, *Iso.2s* (18° 30'.62 S 146° 23'.22 E), is off station.

Chart temporarily affected - Aus 259 - Aus 267 - Aus 828**73(T)/2019 AUSTRALIA - QUEENSLAND - Mackay - Harbour works**

Former Notice - 1143(T)/2018 is cancelled
Maritime Safety Queensland Notice 22(T)/2019

Vessel *Co-star* and support vessels are conducting harbour works at Berth 3 (21° 06'.37 S 149° 13'.57 E) and 5 (21° 06'.20 S 149° 13'.67 E).

Vessels will monitor VHF Ch 10, 13 and 16.

Mariners are advised to navigate with caution in the area.

Chart temporarily affected - Aus 250

74(T)/2019 AUSTRALIA - QUEENSLAND - Mackay - Survey operations completed

Former Notice - 1087(T)/2018 is cancelled
Maritime Safety Queensland

Cancel this notice on receipt.

Chart formerly affected - Aus 250**75(T)/2019 AUSTRALIA - QUEENSLAND - Mooloolaba - Shoaling**

Former Notice - 974(T)/2018 is cancelled
Maritime Safety Queensland Notice 9(T)/2019

A shoal patch exists from the end of the eastern breakwater (26° 40'.74 S 153° 07'.95 E) extending in a westerly direction past the centreline of the channel with least depths as follows:

<i>Position</i>	<i>Depth</i>
26° 40'.76 S 153° 07'.92 E	1.5m
26° 40'.76 S 153° 07'.95 E	0.1m

Mariners are advised to navigate with caution in the area.

Chart temporarily affected - Aus 235**76(T)/2019 AUSTRALIA - QUEENSLAND - Townsville - Cleveland Bay - Obstruction**

Maritime Safety Queensland Notice 24(T)/2019

An obstruction marked by a special light buoy, *Fl. Y. 2s*, exists in position 19° 14'.37 S 146° 49'.58 E.

Chart temporarily affected - Aus 257**77(T)/2019 AUSTRALIA - QUEENSLAND - Whitsunday Passage - Shute Harbour - Wreck salvaged**

Former Notice - 34(T)/2018 is cancelled
Maritime Safety Queensland

Cancel this notice on receipt.

Chart formerly affected - Aus 252 - Aus 253 - Aus 269 - Aus 824**78(P)/2019 PAPUA NEW GUINEA - Admiralty Islands - Seeadler Harbour - Shoaling**

LADS Flight

Latest survey shows charted depths exceed the expected variances in both position and depth within the following area:

1° 55'.91 S 147° 05'.90 E
1° 56'.94 S 147° 15'.52 E
1° 57'.69 S 147° 20'.96 E
2° 00'.00 S 147° 25'.79 E
2° 02'.00 S 147° 26'.63 E
2° 03'.80 S 147° 25'.66 E
2° 02'.83 S 147° 19'.35 E
1° 59'.12 S 147° 09'.12 E.

Mariners are advised to navigate with caution in the area.

Charts will be updated in due course.

Chart which will be affected - Aus 391 - Aus 662**79(T)/2019 PAPUA NEW GUINEA - Banaru Reef to Wogoromodo Reef - Light beacons relit**

Former Notice - 1148(T)/2018 is cancelled
National Maritime Safety Authority PNG

Cancel this notice on receipt.

Chart formerly affected - Aus 399 - Aus 683 - SLB 301

80(P)/2019 PAPUA NEW GUINEA - Ningau Island - Shoaling
Fugro

Latest survey shows shoaler depths than those charted may exist in an area bounded by the following positions:

04° 39'.63 S 149° 14'.71 E
04° 35'.74 S 149° 16'.10 E
04° 35'.98 S 149° 24'.52 E
04° 37'.08 S 149° 24'.56 E
04° 39'.53 S 149° 19'.65 E.

Mariners are advised to navigate with caution in the area.

Charts will be updated in due course.

Chart which will be affected - Aus 386 - Aus 678

81(T)/2019 AUSTRALIA - NORTHERN TERRITORY - Darwin - East Arm - Light beacon unlit
Department of Transport NT Notice 1(T)/2019

The starboard lateral light beacon, *Fl.G.3s* (12° 29'.16 S 130° 51'.80 E), is unlit.

Chart temporarily affected - Aus 25 - Aus 26 - Aus 28

82(T)/2019 AUSTRALIA - TIMOR SEA - Sahul Banks - Drilling operations
Former Notice - 1153(T)/2018 is cancelled
MODU Development Driller 1

Drill rig *Development Driller 1* is conducting drilling operations in position 11° 55'.70 S 124° 51'.90 E.

Chart temporarily affected - Aus 314 - Aus 4721 (INT 721) - Aus 4722 (INT 722)

83(T)/2019 AUSTRALIA - WESTERN AUSTRALIA - Carnarvon - Teggs Channel - Light buoy
Department of Transport WA Notice 16/2019

A starboard lateral light buoy, *Fl.G.3s*, exists in position 24° 54'.43 S 113° 38'.12 E.

Chart temporarily affected - Aus 73

84(T)/2019 AUSTRALIA - WESTERN AUSTRALIA - Dampier Archipelago - Seismic survey northwards
CGG , Australian Maritime Safety Authority Auscoast Warning 015/2019

MV *Geo Coral*, with a 10000m towed array, and support vessels are conducting a seismic survey in an area bounded by the following positions:

19° 46'.0 S 116° 08'.0 E
19° 46'.0 S 116° 57'.0 E
19° 19'.0 S 116° 57'.0 E
19° 19'.0 S 116° 08'.0 E.

Vessels will display appropriate lights and shapes.

Mariners are advised to navigate with caution in the area. 6M clearance requested.

Chart temporarily affected - Aus 327 - Aus 741

85(T)/2019 AUSTRALIA - WESTERN AUSTRALIA - Dampier Archipelago - Seismic survey northwards
Former Notice - 34(T)/2019 is cancelled
Australian Maritime Safety Authority Auscoast Warning 015/2019

Cancel this notice on receipt.

Chart formerly affected - Aus 327 - Aus 741

86(T)/2019 AUSTRALIA - WESTERN AUSTRALIA - Five Fathom Bank - Military exercise westwards

Department of Defence

The Western Australia Exercise Area (WAXA) will be activated from 04 February to 11 March 2019 for a series of military exercises including Exercise Ocean Explorer, Diamond Seas, and SMASHEX.

SMASHEX is a real-time search for a missing submarine, from 20 to 22 February 2019. This exercise is to practice coordinated Search and Rescue operational procedures.

Vessels are advised to avoid the following area during the exercise. A Royal Australian Navy Submarine will be positioned on the seabed from 20 to 22 February 2019. Military surface vessels will conduct the exercise February 2019 in an area bounded by:

32° 30'.0 S 115° 00'.0 E,
 32° 30'.0 S 115° 20'.0 E,
 32° 10'.0 S 115° 20'.0 E,
 32° 10'.0 S 115° 00'.0 E.

Mariners are advised to navigate with additional caution. Merchant traffic may be invited to alter course to facilitate naval training manoeuvres. Vessels transiting proximate to the area during the exercise period are advised to navigate with caution, monitor VHF Channel 16, and ensure their vessel's Automatic Identification Systems (AIS) is activated.

There will be an increase in traffic crossing the WAXA due to additional military exercises before and after Exercise SMASHEX. Maritime industry enquiries related to Exercise SMASHEX should be directed to RAN Maritime Trade Operations via phone +61 (0) 431764980 or email MTO.OPSO@defence.gov.au.

Chart temporarily affected - Aus 112 - Aus 117 - Aus 335 - Aus 753 - Aus 754 - Aus 755 - Aus 756 - Aus 4725 (INT 725) - Aus 4726 (INT 726)

87(T)/2019 AUSTRALIA - WESTERN AUSTRALIA - Sahul Banks - Subsea operations completed

Former Notice - 943(T)/2018 is cancelled

Subsea 7

Cancel this notice on receipt.

Chart formerly affected - Aus 312 - Aus 4721 (INT 721)

88(T)/2019 AUSTRALIA - VICTORIA - Cape Conran - Subsea operations; pipeline operations southwards

Cooper Energy, Subsea 7

Vessel *Skandi Acergy* and support vessels are conducting subsea and pipeline operations between positions:

37° 48'.11 S 148° 26'.15 E
 37° 50'.55 S 148° 26'.23 E
 38° 06'.62 S 149° 01'.54 E.

Mariners are advised to navigate with caution in the area.

Chart temporarily affected - Aus 357

89(T)/2019 AUSTRALIA - VICTORIA - Cape Conran - Drill rig southwestwards

Esso Australia Pty Ltd

On or about 6 February 2019, drill rig *Ocean Monarch* will be conducting drilling operations in position 38° 32'.44 S 148° 33'.26 E.

Chart temporarily affected - Aus 357 - Aus 487

90(T)/2019 AUSTRALIA - VICTORIA - Port Phillip - Station Pier - Harbour works completed

Former Notice - 656(T)/2018 is cancelled

Victorian Ports Corporation (Melbourne) Notice 1(T)/2019

Cancel this notice on receipt.

Chart formerly affected - Aus 154

91(T)/2019 AUSTRALIA - VICTORIA - Port Phillip - Indented Head - Light buoy restored

Former Notice - 1163(T)/2018 is cancelled
Parks Victoria Notice 3/2019

Cancel this notice on receipt.

Chart formerly affected - Aus 157**92(T)/2019 AUSTRALIA - VICTORIA - Western Port - San Remo - Shoaling**

Parks Victoria Notice 347(T)/2017

Shoaling exists in the vicinity of position 38° 32'.30 S 145° 20'.97 E.

Mariners are advised to navigate with caution in the area.

Chart temporarily affected - Aus 150**93(T)/2019 AUSTRALIA - TASMANIA - Burnie - Scientific instrument recovered**

Former Notice - 845(T)/2018 is cancelled
Marine and Safety Tasmania Notice M10/2019

Cancel this notice on receipt.

Chart formerly affected - Aus 163**94(P)/2019 AUSTRALIA - TASMANIA - Cape Barren Island to Preservation Island - Uncharted rocks and coastline inaccuracies**

Jack and Jude

Uncharted rocks and coastline inaccuracies may exist along the southern coastline of Cape Barren Island, between Cape Sir John (40° 25'.21 S 147° 59'.29 E) and Sloping Point (40° 27'.87 S 148° 13'.69 E), and around Preservation Island (40° 28'.50 S 148° 03'.90 E).

An uncharted Island and rocks exist in the vicinity of position 40° 28'.81 S 148° 03'.13 E.

Mariners are advised to navigate with caution in the area.

Charts will updated in due course.

Chart which will be affected - Aus 179 - Aus 798 - Aus 800**95(T)/2019 AUSTRALIA - TASMANIA - Hobart - Tasman Bridge - Harbour works**

Maritime and Safety Tasmania Notice 13/2019

Vessel *Miss Candice* and support vessels are conducting remedial works to the piles of the Tasman Bridge involving diving operations in an are bounded by the following positions:

42° 51'.95 S 147° 20'.22 E

42° 51'.91 S 147° 20'.24 E

42° 51'.85 S 147° 20'.98 E

42° 51'.88 S 147° 20'.99 E.

Mariners are advised to navigate with caution and avoid passing through spans where diving operations may be taking pace.

Chart temporarily affected - Aus 172**96(T)/2019 AUSTRALIA - TASMANIA - River Derwent - Ralphs Bay - Drill rig moved**

Former Notice - 1055(T)/2018 is cancelled
Esso Australia Pty Ltd

Cancel this notice on receipt.

Chart formerly affected - Aus 171 - Aus 796

97(T)/2019 AUSTRALIA - TASMANIA - Robbins Island - Light buoy restored

Former Notice - 266(T)/2018 is cancelled

Marine and Safety Tasmania Notice M008/2019

Cancel this notice on receipt.

Chart formerly affected - Aus 790

HYDROGRAPHIC REPORTS

<i>Locality</i>	<i>Report</i>	<i>Ship/Authority</i>	<i>Observer</i>
TORRES STRAIT- Dalrymple Islet	Obstruction	<i>HMAS</i> Launceston	
TAS- Foster Islands	Underwater Rock		T White
Cape Barren Island and Preservation Island	Coastline inaccuracies and uncharted rocks		Jack and Jude

III

NAVIGATION WARNINGS

The Australian Hydrographic Office will no longer compile Section III of the Australian Notices to Mariners. For the most up to date navigation warnings please refer to:

AMSA Navigation Warnings

<http://amsa.gov.au/search-and-rescue/distress-and-safety-comms/msi/msi-email/index.asp>

New Zealand Notices to Mariners (Navarea XIV warnings)

<http://www.linz.govt.nz/sea/maritime-safety/notices-mariners>

To accompany Australian Notice to Mariners 51/2019

SYDNEY VESSEL TRAFFIC SERVICE AREA

For entry into Sydney Harbour, vessels approaching Port Jackson are to contact Sydney Vessel Traffic Services (Call Sign Sydney VTS) on VHF channel 13, two hours prior to arrival off port limits.

For entry into Botany Bay, vessels approaching Port Botany are to contact Sydney Vessel Traffic Services (Call Sign Sydney VTS) on VHF channel 12, two hours prior to arrival off port limits.

Note for chart Aus 197

To accompany Australian Notice to Mariners 51/2019

SYDNEY VESSEL TRAFFIC SERVICE AREA

For entry into Sydney Harbour, vessels approaching Port Jackson are to contact Sydney Vessel Traffic Services (Call Sign Sydney VTS) on VHF channel 13, two hours prior to arrival off port limits.

For entry into Botany Bay, vessels approaching Port Botany are to contact Sydney Vessel Traffic Services (Call Sign Sydney VTS) on VHF channel 12, two hours prior to arrival off port limits.

Note for chart Aus 200

To accompany Australian Notice to Mariners 51/2019

SYDNEY VESSEL TRAFFIC SERVICE AREA

For entry into Sydney Harbour, vessels approaching Port Jackson are to contact Sydney Vessel Traffic Services (Call Sign Sydney VTS) on VHF channel 13, two hours prior to arrival off port limits.

For entry into Botany Bay, vessels approaching Port Botany are to contact Sydney Vessel Traffic Services (Call Sign Sydney VTS) on VHF channel 12, two hours prior to arrival off port limits.

Note for chart Aus 809

To accompany Australian Notice to Mariners 59/2019

TRAFFIC SEPARATION

The Traffic Separation Scheme (TSS) shown on this chart is an International Maritime Organization - adopted ships routing system.

The scheme has been established to enhance maritime safety and environment protection.

It is recommended that vessels use the TSS and avoid navigating inshore of the scheme.

Note for chart Aus 336

To accompany Australian Notice to Mariners 51/2019

SYDNEY VESSEL TRAFFIC SERVICE AREA

For entry into Sydney Harbour, vessels approaching Port Jackson are to contact Sydney Vessel Traffic Services (Call Sign Sydney VTS) on VHF channel 13, two hours prior to arrival off port limits.

For entry into Botany Bay, vessels approaching Port Botany are to contact Sydney Vessel Traffic Services (Call Sign Sydney VTS) on VHF channel 12, two hours prior to arrival off port limits.

Note for chart Aus 198

To accompany Australian Notice to Mariners 51/2019

SYDNEY VESSEL TRAFFIC SERVICE AREA

For entry into Sydney Harbour, vessels approaching Port Jackson are to contact Sydney Vessel Traffic Services (Call Sign Sydney VTS) on VHF channel 13, two hours prior to arrival off port limits.

For entry into Botany Bay, vessels approaching Port Botany are to contact Sydney Vessel Traffic Services (Call Sign Sydney VTS) on VHF channel 12, two hours prior to arrival off port limits.

Note for chart Aus 808

To accompany Australian Notice to Mariners 59/2019

TRAFFIC SEPARATION

The Traffic Separation Scheme (TSS) shown on this chart is an International Maritime Organization - adopted ships routing system.

The scheme has been established to enhance maritime safety and environment protection.

It is recommended that vessels use the TSS and avoid navigating inshore of the scheme.

Note for chart Aus 335

To accompany Australian Notice to Mariners 59/2019

TRAFFIC SEPARATION

The Traffic Separation Scheme (TSS) shown on this chart is an International Maritime Organization - adopted ships routing system.

The scheme has been established to enhance maritime safety and environment protection.

It is recommended that vessels use the TSS and avoid navigating inshore of the scheme.

Note for chart Aus 756

To accompany Australian Notice to Mariners 59/2019

TRAFFIC SEPARATION

The Traffic Separation Scheme (TSS) shown on this chart is an International Maritime Organization - adopted ships routing system.

The scheme has been established to enhance maritime safety and environment protection.

It is recommended that vessels use the TSS and avoid navigating inshore of the scheme.

Note for chart Aus 757

To accompany Australian Notice to Mariners 59/2019

TRAFFIC SEPARATION

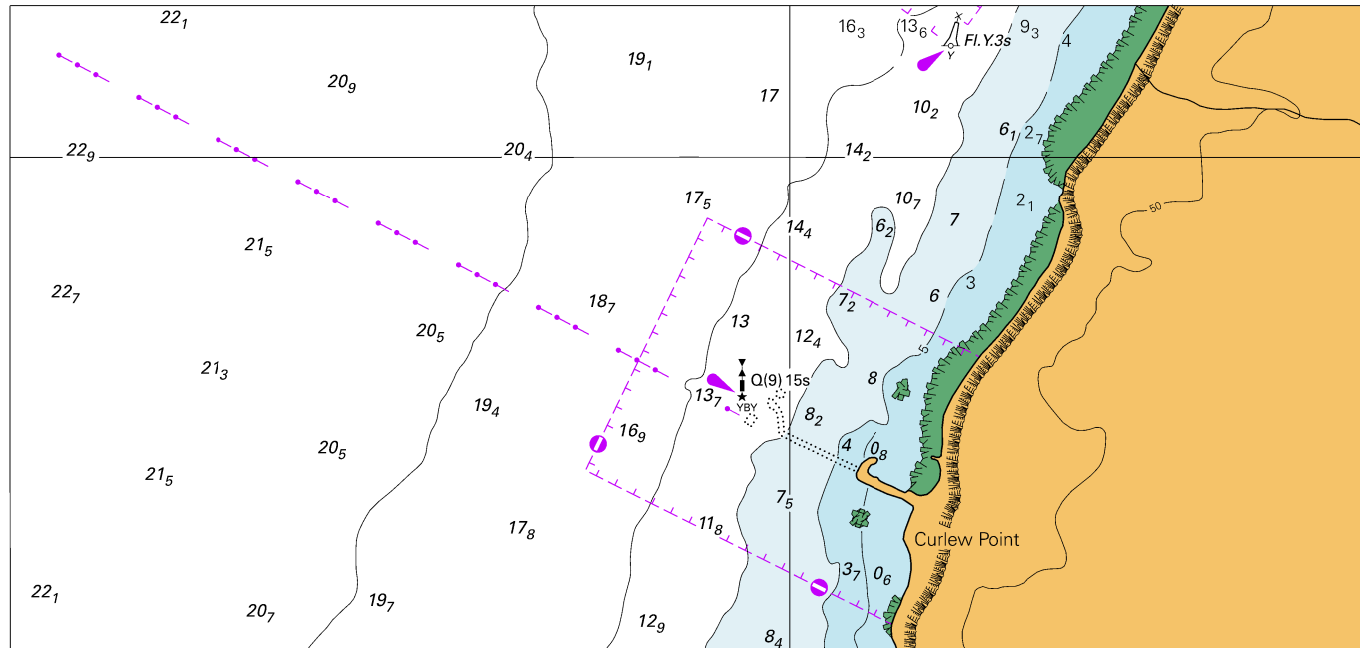
The Traffic Separation Scheme (TSS) shown on this chart is an International Maritime Organization - adopted ships routing system.

The scheme has been established to enhance maritime safety and environment protection.

It is recommended that vessels use the TSS and avoid navigating inshore of the scheme.

Note for chart Aus 758

To accompany Australian Notice to Mariners 61/2019

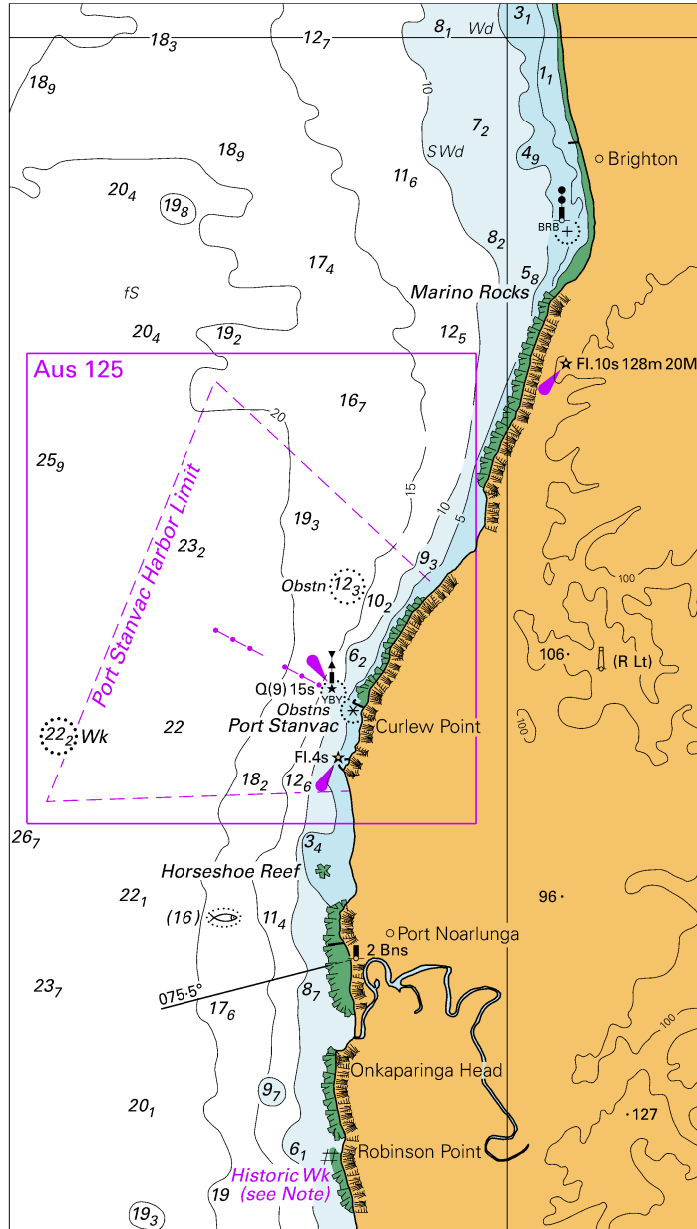


Block for chart Aus 125

© Commonwealth of Australia 2019

(179.5 x 85.0mm)

To accompany Australian Notice to Mariners 61/2019



© Commonwealth of Australia 2019

Block for chart Aus 781

(92.0 x 162.3mm)

