



28 June 2019

Edition 13

AUSTRALIAN NOTICES TO MARINERS

Notices 642 - 682

Published fortnightly by the Australian Hydrographic Office



Australian Notices to Mariners are the authority for correcting charts and publications published by the Australian Hydrographic Office covering Australia, Papua New Guinea, Solomon Islands, Australian Antarctic Territory and Timor-Leste.

Commodore F.T. FREEMAN RAN
Hydrographer of Australia

SECTIONS.

- I. **Australian Notices to Mariners, including blocks and notes.**
- II. **Hydrographic Reports.**
- III. **Navigational Warnings.**

SUPPLEMENTS.

- I. **Tracings**
- II. **Cumulative List of Australian Notices to Mariners.**
- III. **Cumulative List of Temporary and Preliminary Australian Notices to Mariners.**
- IV. **Temporary and Preliminary Notices in force.**
- V. **Amendments to Admiralty List of Lights and Fog Signals (Vol K), Radio Signals (NP 281(2), 282, 283(2), 285, 286(4)) and Sailing Directions (NP 9, 13, 14, 15, 33, 34, 35, 36, 39, 44, 51, 60, 61, 62, 100, 136).**

© Commonwealth of Australia 2019

This work is copyright. Apart from any use permitted under the Copyright Act 1968, no part may be reproduced by any process, adapted, communicated or commercially exploited without prior written permission from The Commonwealth represented by the Australian Hydrographic Office.

IMPORTANT NOTICE

This edition of Notices to Mariners includes all significant information affecting AHO products which the AHO has become aware of since the last edition. All reasonable efforts have been made to ensure the accuracy and completeness of the information, including third party information, on which these updates are based. The AHO regards third parties from which it receives information as reliable, however the AHO cannot verify all such information and errors may therefore exist. The AHO does not accept liability for errors in third party information.

GENERAL INSTRUCTIONS

The substance of these notices should be inserted on the charts affected.

Bearings are referred to the true compass and are reckoned clockwise from North; those relating to lights are given as seen by an observer from seaward.

Positions quoted in notices relate to WGS84 which is the horizontal datum for all charts produced by the Australian Hydrographic Office.

The range quoted for a light is its nominal range.

Depths are with reference to the chart datum of each chart. Heights are above mean high water springs or mean higher high water, as appropriate.

The capital letter (P) or (T) after the number of any notice denotes a preliminary or temporary notice respectively, which are contained separately at the end of the permanent notices.

REPORTING OF DANGERS

Mariners are particularly requested to notify the AUSTRALIAN HYDROGRAPHIC OFFICE, Locked Bag 8801 Wollongong, NSW 2500 (Fax 02-4223 6599, e-mail datacentre@hydro.gov.au or, alternatively by filling in and submitting the [Hydrographic Notes](#) forms located on the web site – www.hydro.gov.au), immediately on the discovery of new dangers or suspected dangers to navigation. For changes or defects in aids to navigation notify AusSAR (Fax 02-6230 6868 or email rccaus@amsa.gov.au).

AUTHORISED USE

Copies of Australian notices are available free of charge from the Australian Hydrographic Office (AHO) website (www.hydro.gov.au) and through the eNotices (email) service (www.hydro.gov.au/enotices/enotices.htm).

Individual Notices may be copied for the purpose of inserting Notice substance on official charts and publications. Paper copies may be printed by chart agents and distributed to customers on a cost recovery basis. Participating chart agents are listed on the AHO website as providing a 'Paper Notices to Mariners' service (www.hydro.gov.au/webapps/jsp/agents/agents-list.jsp). Copies of the notices may not be sold for profit without prior written agreement.

NUMERICAL INDEX OF NOTICES TO MARINERS

Edition No 13

Notices	Aus Chart, INT Chart, ENC Cell, AHP, BA Pubs
642	Aus 50, 112, 249, 267
643	Aus 68, 83, 111, 114, 116, 631, 739, 740, 741
644	Amendment to Australian National Tide Tables 2019
645	Aus 235, 236, 237, 238, 814, 815
646	Aus 262, 830
647	Aus 662
648	Aus 377
649	Aus 309, 315
650	Aus 109, 110, 118
651	Aus 40, 732, 733
652	Aus 607
653	Aus 604
654	Aus 799
655(T)	Aus 258, 829
656(T)	Aus 244, 245
657(T)	Aus 241
658(T)	Aus 249, 250
659(T)	Aus 267
660(T)	Aus 256, 827
661(T)	Aus 256, 827
662(T)	Aus 247
663(T)	Aus 262
664(T)	Aus 4
665(T)	Aus 612
666(T)	Aus 379, 505, 506, 507, 621, 622, 623, 4620, 4621, INT 620, 621
667(T)	Aus 73
668(T)	Aus 328
669(T)	Aus 328
670(T)	Aus 4725, INT 725
671(T)	Aus 116
672(T)	Aus 53
673(T)	Aus 53
674(T)	Aus 55, 56
675(T)	Aus 357, 487, 4644, INT 644
676(T)	Aus 357
677(T)	Aus 349, 787
678(T)	Aus 141, 349
679(T)	Aus 150, 151, 801
680(T)	Aus 148, 163, 181, 357, 487, 799, 801, 802, 4644, INT 644
681(T)	Aus 178, 487, 790, 799, 801, 802, 4644, INT 644
682(T)	Aus 170, 766, 797

NUMERICAL INDEX OF CHARTS AFFECTED

Edition No 13

Aus Chart	Notices
Aus 4	664(T)
Aus 40	651
Aus 50	642
Aus 53	672(T), 673(T)
Aus 55	674(T)
Aus 56	674(T)
Aus 68	643
Aus 73	667(T)
Aus 83	643
Aus 109	650
Aus 110	650
Aus 111	643
Aus 112	642
Aus 114	643
Aus 116	643, 671(T)
Aus 118	650
Aus 141	678(T)
Aus 148	680(T)
Aus 150	679(T)
Aus 151	679(T)
Aus 163	680(T)
Aus 170	682(T)
Aus 178	681(T)
Aus 181	680(T)
Aus 235	645
Aus 236	645
Aus 237	645
Aus 238	645
Aus 241	657(T)
Aus 244	656(T)
Aus 245	656(T)
Aus 247	662(T)
Aus 249	642, 658(T)
Aus 250	658(T)
Aus 256	660(T), 661(T)
Aus 258	655(T)
Aus 262	646, 663(T)
Aus 267	642, 659(T)
Aus 309	649
Aus 315	649
Aus 328	668(T), 669(T)
Aus 349	677(T), 678(T)
Aus 357	675(T), 676(T), 680(T)
Aus 377	648
Aus 379	666(T)
Aus 487	675(T), 680(T), 681(T)
Aus 505	666(T)
Aus 506	666(T)
Aus 507	666(T)
Aus 604	653
Aus 607	652
Aus 612	665(T)
Aus 621	666(T)
Aus 622	666(T)

Aus Chart	Notices
Aus 623	666(T)
Aus 631	643
Aus 662	647
Aus 732	651
Aus 733	651
Aus 739	643
Aus 740	643
Aus 741	643
Aus 766	682(T)
Aus 787	677(T)
Aus 790	681(T)
Aus 797	682(T)
Aus 799	654, 680(T), 681(T)
Aus 801	679(T), 680(T), 681(T)
Aus 802	680(T), 681(T)
Aus 814	645
Aus 815	645
Aus 827	660(T), 661(T)
Aus 829	655(T)
Aus 830	646
Aus 4620	666(T)
Aus 4621	666(T)
Aus 4644	675(T), 680(T), 681(T)
Aus 4725	670(T)

INT Chart	Notices
INT 620	666(T)
INT 621	666(T)
INT 644	675(T), 680(T), 681(T)
INT 725	670(T)

642 AUSTRALIA - Products - New Charts, New Editions, Withdrawn Charts

Australian Hydrographic Office

New Charts

<i>Chart</i>	<i>Title and Geographical limits</i>	<i>Scale</i>	<i>Publication Date</i>	<i>Remarks</i>
NIL				

New Electronic Navigation Chart (Aus ENC)

<i>Cell Name</i>	<i>Title</i>	<i>Publication Date</i>	<i>Remarks</i>
NIL			

New Editions and Withdrawn Charts

<i>Chart</i>	<i>Title</i>	<i>Scale</i>	<i>Publication Date</i>	<i>Remarks</i>
Aus 50 (Edition 2)	Australia - North West Coast - Western Australia - Approaches to Broome	1:50 000	28 June 2019	New edition with general updating throughout; including latest bathymetric data. Chart Aus 50 Edition 1 dated 15 January 2010 is now superseded and must be withdrawn from use.
Aus 112 (Edition 6)	Australia - West Coast - Western Australia - Approaches to Fremantle	1:37 500	28 June 2019	New edition with general updating throughout; including latest bathymetric data. Chart Aus 112 Edition 5 dated 13 July 2018 is now superseded and must be withdrawn from use.
Aus 249 (Edition 6)	Australia - East Coast - Queensland - Approaches to Hay Point and Mackay	1:75 000	28 June 2019	New edition with general updating throughout; including latest bathymetric data and Restricted Area limits. Chart Aus 249 Edition 5 dated 18 July 2014 is now superseded and must be withdrawn from use.
Aus 267 (Edition 4)	Australia - East Coast - Queensland - Lucinda Plan: Lucinda Offshore Wharf	1:12 500 1:5 000	28 June 2019	New edition with general updating throughout; including latest bathymetric data. Chart Aus 267 Edition 3 dated 9 March 2018 is now superseded and must be withdrawn from use.

Chart permanently withdrawn

Charts listed above as withdrawn no longer meet chart carriage requirements and should be marked as "superseded" and replaced with the new chart/ new edition listed prior to passage through the area covered by the new chart.

When placing orders with a chart agent between notice of forthcoming edition and its publication, mariners should advise whether their order pertains to the current edition or the new edition.

For further details refer to the AHO website at www.hydro.gov.au for new edition and new chart stock arrival information.

643 AUSTRALIA - Products - New Charts and New Editions to be published shortly

Australian Hydrographic Office

New Charts to be published shortly

<i>Chart</i>	<i>Title</i>	<i>Scale</i>	<i>Expected Publication Date</i>	<i>Remarks</i>
SLB 108	South Pacific Ocean - Solomon Islands - Vangunu Island - Mbili Passage to Hele Bar	1:50 000	12 July 2019	New chart with latest bathymetric survey data.
PNG 631	Papua New Guinea - North East Coast - Approaches to Sewa Bay	1:15 000	12 July 2019	Adoption of Papua New Guinea chart numbering. Replaces Aus 631. General updating throughout including latest bathymetric data and new submarine cable.

New Editions to be published shortly

<i>Chart</i>	<i>Title</i>	<i>Scale</i>	<i>Expected Publication Date</i>	<i>Remarks</i>
AUS 116	Australia - South West Coast - Plans in Western Australia - West and South Coast Plans Flinders Bay Entrance to Mandurah Estuary Hamelin Bay Mary Ann Haven Warnbro Sound Port Geographe Marina Starvation Boat Harbour	1:50 000 1:15 000 1:25 000 1:20 000 1:37 500 1:12 000 1:15 000	12 July 2019	New edition with general updating throughout; including latest bathymetric data.

Charts to be withdrawn

<i>Chart</i>	<i>Remarks</i>
Aus 631	On publication of new chart PNG 631

NOTE*Notice to Mariners 574/2019*

Plans to withdraw chart Aus 83 without replacement will no longer take place.

Charts to be withdrawn without replacement in June 2019

<i>Chart</i>	<i>Title</i>	<i>Scale</i>	<i>Publication Date</i>
Aus 111 Edition 3	Australia - West Coast - Western Australia - Careening Bay and Approaches Inset: Sulphur Bay	1:7 500 1:7 500	6 November 2015
Aus 114 Edition 4	Australia - West Coast - Western Australia - Kwinana Inset: Kwinana Grain Jetty	1:12 500 1:12 500	6 November 2015

643 AUSTRALIA - Products - New Charts and New Editions to be published shortly**Charts to be withdrawn without replacement in July 2019**

<i>Chart</i>	<i>Title</i>	<i>Scale</i>	<i>Publication Date</i>
Aus 68 Edition 1	Australia - North West Coast - Western Australia - Approaches to cape Preston Inset: Cape Preston	1:50 000 1:10 000	8 March 2013
Aus 739 Edition 3	Australia - North West Coast - Western Australia - Bedout Islet to Port Hedland	1:150 000	15 January 2010
Aus 740 Edition 3	Australia - North West Coast - Western Australia - Port Hedland to Port Walcott Inset: Depuch Island Anchorage	1:150 000 1:20 000	15 January 2010
Aus 741 Edition 3	Australia - North West Coast - Western Australia - Approaches to Dampier Archipelago	1:150 000	6 November 2015

644 AUSTRALIA - Product - Amendment to Australian National Tide Tables 2019

Australian Hydrographic Office

ANTT 2019

Page 362

Amend HAY POINT To Chart Datum AUS 250 NE 14 JUN 2019 0.0

Page 363

Amend MACKAY OUTER HARBOUR To Chart Datum AUS 250 NE 14 JUN 2019 0.0

Page 364

Amend NORFOLK ISLAND To Chart Datum AUS 609 NE 14 JUN 2019 SUBTRACT 0.1

645 AUSTRALIA - QUEENSLAND - Brisbane - VTS
Australian Hydrographic Office

Note: position of existing chart notes may vary on certain charts.

Aus 235 [528/2019]

Insert	accompanying note	27° 03'.8 S	152° 58'.3 E
Amend	magenta legend to <i>Brisbane Port/VTS Limit</i>	26° 43'.9 S	153° 15'.7 E
	magenta legend to <i>Brisbane Port/VTS Limit</i>	26° 46'.1 S	153° 10'.0 E
	magenta legend to <i>Brisbane Port/VTS Limit</i>	26° 56'.9 S	153° 15'.2 E
	magenta legend to <i>Brisbane Port/VTS Limit</i>	26° 58'.4 S	153° 12'.4 E

Aus 236 [581/2019]

Insert	accompanying note	27° 24'.0 S	153° 04'.2 E
Amend	magenta legend to <i>Brisbane Port/VTS Limit</i>	27° 02'.9 S	153° 18'.9 E
	magenta legend to <i>Brisbane Port/VTS Limit</i>	27° 03'.6 S	153° 15'.3 E
	magenta legend to <i>Brisbane Port/VTS Limit</i>	27° 15'.5 S	153° 10'.5 E
	magenta legend to <i>Brisbane Port/VTS Limit</i>	27° 21'.3 S	153° 17'.3 E

Aus 237 [579/2019]

Insert	accompanying note	27° 23'.2 S	153° 08'.1 E
Amend	magenta legend to <i>Brisbane Port/VTS Limit</i>	27° 19'.05 S	153° 10'.11 E
	magenta legend to <i>Brisbane Port/VTS Limit</i>	27° 21'.54 S	153° 09'.88 E
	magenta legend to <i>Brisbane Port/VTS Limit</i>	27° 22'.59 S	153° 11'.93 E
	magenta legend to <i>Brisbane Port/VTS Limit</i>	27° 23'.57 S	153° 08'.71 E
	magenta legend to <i>Brisbane Port/VTS Limit</i>	27° 24'.40 S	153° 10'.94 E

Aus 238 [949/2018]

Insert	accompanying note	27° 25'.60 S	153° 06'.40 E
Amend	magenta legend to <i>Brisbane Port/VTS Limit</i>	27° 26'.57 S	153° 02'.96 E

Aus 238 (Bulimba Reach) [949/2018]

Amend	magenta legend to <i>Brisbane Port/VTS Limit</i>	27° 26'.58 S	153° 02'.98 E
-------	--	--------------	---------------

Aus 814 [529/2019]

Insert	accompanying note	28° 01'.5 S	153° 16'.5 E
Amend	magenta legend to <i>Brisbane Port/VTS Limit</i>	26° 59'.2 S	153° 16'.6 E
	magenta legend to <i>Brisbane Port/VTS Limit</i>	27° 03'.8 S	153° 15'.5 E
	magenta legend to <i>Brisbane Port/VTS Limit</i>	27° 14'.8 S	153° 10'.6 E
	magenta legend to <i>Brisbane Port/VTS Limit</i>	27° 21'.2 S	153° 17'.2 E

Aus 815 [528/2019]

Insert	accompanying note	26° 02'.5 S	153° 52'.6 E
Amend	magenta legend to <i>Brisbane Port/VTS Limit</i>	26° 43'.6 S	153° 15'.7 E
	magenta legend to <i>Brisbane Port/VTS Limit</i>	26° 56'.3 S	153° 11'.3 E
	magenta legend to <i>Brisbane Port/VTS Limit</i>	26° 59'.3 S	153° 16'.7 E

646 AUSTRALIA - QUEENSLAND - Cairns - Light; tower
Australian Hydrographic Office

Aus 262 [521/2019]

Amend	light to <i>Aero Al.FI.WG.7.5s 47m (occas)</i>	16° 52'.49 S	145° 45'.32 E
	tower height to (46)	16° 52'.49 S	145° 45'.32 E

Aus 830 [521/2019]

Amend	light to <i>Aero Al.FI.WG.7.5s (occas)</i>	16° 52'.5 S	145° 45'.3 E
-------	--	-------------	--------------

647 PAPUA NEW GUINEA - Seadler Harbour - DepthsHMAS *Melville***Aus 662 [535/2019]**

Insert	depth, 18_2m , enclosed by contour	1° 59'.645 S	147° 18'.240 E
	depth, 18_9m , enclosed by contour	2° 00'.016 S	147° 18'.040 E
	depth, 11_2m , enclosed by contour	2° 00'.281 S	147° 18'.679 E
	depth, $19m$, and extend contour W to enclose	2° 00'.563 S	147° 19'.868 E
	depth, 13_9m , enclosed by contour	2° 00'.680 S	147° 21'.012 E
	depth, 11_6m , enclosed by contour	2° 00'.985 S	147° 20'.895 E
Delete	depth, 19m	2° 00'.60 S	147° 19'.94 E

648 AUSTRALIA - TORRES STRAIT - Pandora Passage - Depths

CSIRO

Aus 377 [582/2019]

Insert	depth, $74m$, enclosed by contour	9° 43'.00 S	144° 32'.98 E
	depth, $83m$, enclosed by contour	9° 45'.68 S	144° 34'.08 E

649 AUSTRALIA - TIMOR SEA - The Boxers - Depths southwestwards

Australian Hydrographic Office

Aus 309 [107/2019]

Insert	depth, $51m$, extend contour SE to enclose	11° 52'.69 S	128° 03'.58 E
Delete	depth, 72m	11° 52'.5 S	128° 03'.3 E

Aus 315 [13/2019]

Insert	depth, $51m$, extend contour SE to enclose	11° 52'.69 S	128° 03'.58 E
Delete	depth, 72m	11° 52'.5 S	128° 03'.3 E

650 AUSTRALIA - WESTERN AUSTRALIA - Oyster Harbour to Mistaken Island - Marine farms

Department of Transport WA

Aus 109 [327/2019]

Insert	dashed line, between	35° 03'.927 S	117° 56'.891 E
		35° 03'.927 S	117° 56'.391 E
Move	marine farm symbol to legend, (see Note) to	35° 03'.894 S	117° 56'.461 E
		35° 03'.950 S	117° 56'.504 E
		35° 03'.924 S	117° 56'.631 E
		35° 03'.962 S	117° 56'.666 E
Delete	dashed line, between	35° 03'.93 S	117° 56'.89 E
		35° 03'.85 S	117° 56'.89 E
		35° 03'.85 S	117° 56'.39 E
		35° 03'.93 S	117° 56'.39 E

Aus 110 [267/2019]

Insert	dashed line, between	35° 03'.927 S	117° 56'.891 E
		35° 03'.927 S	117° 56'.391 E
Move	marine farm symbol to	35° 03'.901 S	117° 56'.640 E
		35° 03'.966 S	117° 56'.453 E
Delete	dashed line, between	35° 03'.93 S	117° 56'.89 E
		35° 03'.85 S	117° 56'.89 E
		35° 03'.85 S	117° 56'.39 E
		35° 03'.93 S	117° 56'.39 E

Aus 110 (Oyster Harbour) [267/2019]

Insert	dashed line, between	34° 58'.380 S	117° 56'.993 E		
		34° 58'.417 S	117° 57'.547 E		
		34° 58'.812 S	117° 57'.386 E		
		34° 58'.528 S	117° 58'.343 E		
		34° 58'.847 S	117° 58'.555 E		
		34° 58'.833 S	117° 58'.731 E		
		34° 58'.320 S	117° 58'.517 E		
		34° 57'.992 S	117° 58'.211 E		
		34° 58'.048 S	117° 58'.034 E		
		34° 58'.278 S	117° 58'.209 E		
		Delete	dashed line, between	34° 58'.38 S	117° 56'.99 E
				34° 58'.38 S	117° 57'.39 E
				34° 58'.81 S	117° 57'.39 E
34° 58'.53 S	117° 58'.34 E				
34° 58'.86 S	117° 58'.49 E				
34° 58'.86 S	117° 58'.63 E				
34° 58'.03 S	117° 58'.19 E				
34° 58'.08 S	117° 58'.02 E				
34° 58'.28 S	117° 58'.21 E				

Aus 118 [591/2019]

Delete	dashed line, between	35° 03'.9 S	117° 56'.9 E
		35° 03'.8 S	117° 56'.9 E
		35° 03'.8 S	117° 56'.4 E
		35° 03'.9 S	117° 56'.4 E
		35° 03'.3 S	117° 56'.4 E
		35° 03'.6 S	117° 56'.4 E
		35° 03'.6 S	117° 56'.9 E
		35° 03'.3 S	117° 56'.9 E
		35° 03'.3 S	117° 56'.4 E
		35° 03'.3 S	117° 56'.4 E
		35° 03'.3 S	117° 56'.4 E

651 AUSTRALIA - WESTERN AUSTRALIA - Yampi Sound - Comber Rock - Nav aids

Former Notice - 304(T)/2018 is cancelled
Department of Transport WA Notice 65/2019

Aus 40 [14/2019]

Insert	yellow black yellow pillar light buoy, Q(3)10s, with east cardinal topmark	16° 06'.419 S	123° 39'.657 E
Delete	light beacon	16° 06'.40 S	123° 39'.60 E

Aus 732 [NE 13/7/2018]

Insert	yellow black yellow pillar light buoy, Q(3)10s, with east cardinal topmark	16° 06'.42 S	123° 39'.66 E
Delete	light beacon	16° 06'.4 S	123° 39'.6 E

Aus 733 [774/2014]

Insert	yellow black yellow pillar light buoy, Q(3)10s, with east cardinal topmark	16° 06'.42 S	123° 39'.66 E
Delete	light beacon	16° 06'.4 S	123° 39'.6 E

652 INDIAN OCEAN - Cocos Islands - West Island - Ujong Tanjong - Nav aids; anchorages

Viva Energy Australia

Aus 607 [350/2016]

Insert	accompanying block	12° 07'.877 S	096° 50'.324 E
Replace	# with depth, 4m, enclosed by danger circle with legend Wk	12° 05'.98 S	096° 51'.49 E

653 SOUTHERN OCEAN - Macquarie Island - Depths

LADS Flight

Aus 604 [NE 13/7/2018]

Insert	depth, 25 ₅ m, enclosed by contour	54° 18'.98 S	159° 00'.43 E
	depth, 9 ₅ m, enclosed by contour	54° 19'.88 S	158° 59'.85 E
	depth, 22 ₅ m, enclosed by contour	54° 20'.19 S	158° 58'.93 E
	depth, 5 ₃ m, enclosed by contour	54° 20'.82 S	159° 00'.19 E
	depth, 5 ₇ m, enclosed by contour	54° 20'.98 S	158° 59'.42 E
	depth, 23 ₄ m, enclosed by contour	54° 21'.41 S	159° 00'.34 E
	depth, 16 ₂ m, enclosed by contour	54° 27'.26 S	158° 55'.61 E
	depth, 11 ₈ m, enclosed by contour	54° 27'.67 S	158° 57'.28 E
Replace	depth, 28 ₃ m with depth, 2 ₉ m, enclosed by contour	54° 19'.4 S	159° 00'.5 E
	depth, 5 ₁ m with depth, 3 ₈ m	54° 20'.0 S	159° 00'.5 E
Delete	contour between	54° 27'.5 S	158° 55'.7 E
		54° 27'.6 S	158° 55'.9 E
	depth, 47m	54° 19'.1 S	159° 00'.6 E
	depth, 30 ₅ m	54° 27'.4 S	158° 55'.3 E
	depth, 29m	54° 27'.8 S	158° 57'.3 E

Aus 604 (Hasselborough and Buckles Bays) [NE 13/7/2018]

Insert	depth, 16m, enclosed by contour	54° 27'.543 S	158° 55'.553 E
	depth, 18 ₇ m, enclosed by contour	54° 27'.637 S	158° 55'.682 E
	depth, 11 ₈ m, enclosed by contour	54° 27'.673 S	158° 57'.278 E
Delete	depth, 26 ₅ m	54° 27'.62 S	158° 55'.68 E

654 AUSTRALIA - TASMANIA - Port Sorell - Nav aids

Australian Hydrographic Office

Aus 799 [1136/2018]

Insert	legend, Channel marked by buoys and beacons, centred on	41° 11'.10 S	146° 33'.50 E
--------	---	--------------	---------------

655(T)/2019 AUSTRALIA - QUEENSLAND - Cowley Beach to Ellison Reef - Military exercise completed

Former Notice - 546(T)/2019 is cancelled
Department of Defence

Cancel this notice on receipt.

Chart formerly affected - Aus 258 - Aus 829**656(T)/2019 AUSTRALIA - QUEENSLAND - Gladstone - Barney Point - Harbour works**

Maritime Safety Queensland Notice 278(T)/2019

Remediation works are in progress at the eastern end of Barney Point wharf (23° 50'.15 S 151° 16'.36 E) and the eastern dolphin (23° 50'.19 S 151° 16'.45 E).

Mariners are advised to navigate with caution in the area.

Chart temporarily affected - Aus 244 - Aus 245**657(T)/2019 AUSTRALIA - QUEENSLAND - Great Sandy Strait - Mary River - Scientific instruments**

Former Notice - 664(T)/2016 is cancelled
Maritime Safety Queensland Notice 273(T)/2019

Two special light buoys, *Fl. Y.3s*, exist in position 25° 27'.13 S 152° 54'.24 E and 25° 30'.23 S 152° 47'.16 E.

Chart temporarily affected - Aus 241**658(T)/2019 AUSTRALIA - QUEENSLAND - Hay Point - Exclusion zone**

Maritime Safety Queensland Notice 247(T)/2019

An exclusion zone exists in an area bounded by the following positions:

21° 16'.24 S 149° 17'.54 E
21° 15'.69 S 149° 18'.55 E
21° 15'.53 S 149° 18'.46 E
21° 15'.48 S 149° 18'.58 E
21° 15'.68 S 149° 18'.71 E
21° 15'.86 S 149° 18'.75 E
21° 15'.86 S 149° 18'.78 E
21° 15'.90 S 149° 18'.79 E
21° 15'.88 S 149° 18'.82 E
21° 15'.91 S 149° 18'.86 E
21° 16'.16 S 149° 19'.02 E
21° 16'.37 S 149° 18'.63 E
21° 16'.17 S 149° 18'.51 E
21° 16'.53 S 149° 17'.84 E.

Chart temporarily affected - Aus 249 - Aus 250**659(T)/2019 AUSTRALIA - QUEENSLAND - Hinchinbrook Channel - Light buoy restored**

Former Notice - 495(T)/2018 is cancelled
Maritime Safety Queensland

Cancel this notice on receipt.

Chart formerly affected - Aus 267**660(T)/2019 AUSTRALIA - QUEENSLAND - Rattlesnake Island - Live firing; military exercise completed**

Former Notice - 554(T)/2019 is cancelled
Maritime Safety Queensland Notice 179(T)/2019, 244(T)/2019

Cancel this notice on receipt.

Chart formerly affected - Aus 256 - Aus 827

661(T)/2019 AUSTRALIA - QUEENSLAND - Rattlesnake Island - Military exercise; live firing
 Maritime Safety Queensland Notice 290(T)/2019, 295(T)/2019, 296(T)/2019, 297(T)/2019, 298(T)/2019

Military exercises including live firing activities will be conducted within a 5M radius of position 19° 02'.27 S 146° 36'.43 E on/between 28 June 2019, 1 July and 3 July 2019, 8 July and 11 July 2019, 18 July and 19 July 2019.

Mariners are advised to navigate with caution and keep well clear of the area.

Chart temporarily affected - Aus 256 - Aus 827

662(T)/2019 AUSTRALIA - QUEENSLAND - Rosslyn Bay - Dredging operations
 Maritime Safety Queensland Notice 289(T)/2019

The dredge *Warraber* and support vessels *Darnley* and *Barralodge* are conducting dredging operations in Rosslyn Bay Harbour (23° 09'.52 S 150° 47'.26 E).

A submerged pipeline marked by special light buoys, *Fl. Y5s*, exists between the following positions:

Position	Remarks
23° 09'.54 S 150° 47'.37 E	breakwater
23° 09'.18 S 150° 47'.75 E	
23° 09'.01 S 150° 47'.80 E	lit pontoon.

A floating pipeline marked by special light buoys, *Fl. Y5s*, exists in the harbour which is connected to the dredge. Safe passage exists between a starboard lateral buoy (23° 09'.58 S 150° 47'.35 E) and a port lateral buoy (23° 09'.60 S 150° 47'.34 E).

Mariners are advised to navigate with caution in the area and to contact VHF Ch 16 if the dredge or pipeline are impeding their safe passage.

Chart temporarily affected - Aus 247

663(T)/2019 AUSTRALIA - QUEENSLAND - Thomatis Creek - Dredging operations
 Maritime Safety Queensland Notice 293(T)/2019

The dredge *RN Balder* is conducting dredging operations in the entrance to Thomatis Creek (16° 49'.47 S 145° 43'.97 E).

An exclusion zone exists in an area bounded by the following positions:

Position	Remarks
16° 47'.56 S 145° 45'.12 E	marked by a special light buoy, <i>Fl. Y</i>
16° 47'.90 S 145° 45'.46 E	marked by a special light buoy, <i>Fl. Y</i>
16° 48'.39 S 145° 45'.13 E	
16° 48'.05 S 145° 44'.70 E	

A submerged pipeline exists between the dredge and a special light buoy, *Fl. Y*, in position 16° 48'.20 S 145° 44'.93 E.

Mariners are advised to navigate with caution in the area.

Chart temporarily affected - Aus 262

664(T)/2019 AUSTRALIA - QUEENSLAND - Weipa - Humbug Point to Hey Point - Harbour works completed
 Former Notice - 1257(T)/2016 is cancelled
 Maritime Safety Queensland Notice 72(T)/2016

Cancel this notice on receipt.

Chart formerly affected - Aus 4

665(T)/2019 AUSTRALIA - CORAL SEA - Saumarez Reefs - Live firing

Maritime Safety Queensland Notice 277(T)/2019

Live firing activities will be conducted within a 5M radius of position 21° 51'.30 S 153° 38'.78 E from 1 July to 10 July 2019 and 26 July to 31 July 2019. An exclusion zone exists in the area during live firing.

Mariners are advised to navigate with caution in the area.

Chart temporarily affected - Aus 612

666(T)/2019 PAPUA NEW GUINEA - CORAL SEA - Port Moresby to Mellish Reef - Cable laying operations southeastwards

Gulf Agency Company (Australia)

Vessel *Ile De Brehat* is conducting submarine cable laying operations in a south easterly direction between Port Moresby (9° 29'.15 S 147° 08'.80 E) and position 15° 02'.89 S 153° 29'.50 E.

Mariners are advised to navigate with caution in the area.

Chart temporarily affected - Aus 379 - Aus 505 - Aus 506 - Aus 507 - Aus 621 - Aus 622 - Aus 623 - Aus 4620 (INT 620) - Aus 4621 (INT 621)

667(T)/2019 AUSTRALIA - WESTERN AUSTRALIA - Carnarvon - Dredging operations completed

Former Notice - 696(T)/2018 is cancelled

Department of Transport WA Notice 107/2018

Cancel this notice on receipt.

Chart formerly affected - Aus 73

668(T)/2019 AUSTRALIA - WESTERN AUSTRALIA - Montebello Islands - Mooring buoy northwestwards

Former Notice - 455(T)/2019 is cancelled

Australian Maritime Safety Authority Auscoast Warning 146/2019

Cancel this notice on receipt.

Chart formerly affected - Aus 328

669(T)/2019 AUSTRALIA - WESTERN AUSTRALIA - Montebello Islands - Light buoy recovered northwestwards

Former Notice - 522(T)/2016 is cancelled

Far Sirius

Cancel this notice on receipt.

Chart formerly affected - Aus 328

670(T)/2019 AUSTRALIA - WESTERN AUSTRALIA - Perth - Scientific instrument westwards

Australian Maritime Safety Authority Auscoast Warning 191/2019

A subsurface scientific instrument with a least depth of 30m exists in position 31° 39'.50 S 114° 11'.00 E.

Chart temporarily affected - Aus 4725 (INT 725)

671(T)/2019 AUSTRALIA - WESTERN AUSTRALIA - Port Geographe Marina - Dredging operations completed

Former Notice - 995(T)/2018 is cancelled

Department of Transport WA Notice 144/2018

Cancel this notice on receipt.

Chart formerly affected - Aus 116

672(T)/2019 AUSTRALIA - WESTERN AUSTRALIA - Port Hedland - Harbour works completed

Former Notice - 622(T)/2019 is cancelled
Pilbara Ports Authority

Cancel this notice on receipt.

Chart formerly affected - Aus 53

673(T)/2019 AUSTRALIA - WESTERN AUSTRALIA - Port Hedland - Coxon Shoal - Obstruction removed northwestwards

Former Notice - 504(T)/2019 is cancelled
Pilbara Ports Authority Notice PH 10(T)/2019

Cancel this notice on receipt.

Chart formerly affected - Aus 53

674(T)/2019 AUSTRALIA - WESTERN AUSTRALIA - Port Walcott - Survey operations completed

Former Notice - 338(T)/2018 is cancelled
Department of Transport WA Notice 62/2018

Cancel this notice on receipt.

Chart formerly affected - Aus 55 - Aus 56

675(T)/2019 AUSTRALIA - VICTORIA - Cape Conran - Drill rig southwestwards

Australian Maritime Safety Authority Auscoast Warning 198/2019

Drill rig *Ocean Monarch* is conducting drilling operations in position 38° 32'.41 S 148° 33'.28 E.

Chart temporarily affected - Aus 357 - Aus 487 - Aus 4644 (INT 644)

676(T)/2019 AUSTRALIA - VICTORIA - Cape Conran - Obstruction removed southwards

Former Notice - 1159(T)/2018 is cancelled
Cooper Energy

Cancel this notice on receipt.

Chart formerly affected - Aus 357

677(T)/2019 AUSTRALIA - VICTORIA - Port Campbell - Survey operations southwestwards completed

Former Notice - 361(T)/2019 is cancelled
Cooper Energy

Cancel this notice on receipt.

Chart formerly affected - Aus 349 - Aus 787

678(T)/2019 AUSTRALIA - VICTORIA - Port Fairy Bay - Scientific instrument

Former Notice - 844(T)/2018 is cancelled
Maritime Safety Victoria Notice 127(T)/2019

A special spherical light buoy, *Fl. Y. 2-5s* exists in position 38° 22'.91 S 142° 17'.23 E.

Chart temporarily affected - Aus 141 - Aus 349

679(T)/2019 AUSTRALIA - VICTORIA - Western Port - East Arm - Drill rig moved

Former Notice - 572(T)/2019 is cancelled

Australian Maritime Safety Authority

Cancel this notice on receipt.

Chart formerly affected - Aus 150 - Aus 151 - Aus 801

680(T)/2019 AUSTRALIA - BASS STRAIT - Cape Liptrap to Mersey Bluff - Survey operations

Maritime Safety Victoria Notice 144(T)/2019

Vessel *MV Silver Star*, with a towed array, is conducting a geophysical survey in an area bounded by the following positions:

38° 48'.0 S 145° 48'.0 E

38° 48'.0 S 146° 48'.0 E

41° 00'.0 S 146° 48'.0 E

41° 00'.0 S 145° 48'.0 E.

Vessel will display appropriate lights and shapes and will monitor VHF Ch 16.

Mariners are advised to navigate with caution in the area. 500m clearance is requested.

Chart temporarily affected - Aus 148 - Aus 163 - Aus 181 - Aus 357 - Aus 487 - Aus 799 - Aus 801 - Aus 802 - Aus 4644 (INT 644)

681(T)/2019 AUSTRALIA - BASS STRAIT - Cape Liptrap to Stanley - Survey operations completed

Former Notice - 306(T)/2019 is cancelled

Maritime Safety Victoria Notice 144(T)/2019

Cancel this notice on receipt.

Chart formerly affected - Aus 178 - Aus 487 - Aus 790 - Aus 799 - Aus 801 - Aus 802 - Aus 4644 (INT 644)

682(T)/2019 AUSTRALIA - TASMANIA - Mercury Passage - Obstructions removed

Former Notice - 1103(T)/2014 is cancelled

Marine and Safety Tasmania Notice M108/2014

Cancel this notice on receipt.

Chart formerly affected - Aus 170 - Aus 766 - Aus 797

II

HYDROGRAPHIC REPORTS

NIL

III

NAVIGATION WARNINGS

The Australian Hydrographic Office will no longer compile Section III of the Australian Notices to Mariners. For the most up to date navigation warnings please refer to:

AMSA Navigation Warnings

<http://amsa.gov.au/search-and-rescue/distress-and-safety-comms/msi/msi-email/index.asp>

New Zealand Notices to Mariners (Navarea XIV warnings)

<http://www.linz.govt.nz/sea/maritime-safety/notices-mariners>

To accompany Australian Notice to Mariners 645/2019

BRISBANE VESSEL TRAFFIC SERVICES
AREA

Ships are to contact Brisbane Vessel Traffic Services (call sign Brisbane VTS) on VHF channel 12 two hours prior to and when entering and departing the Brisbane Vessel Traffic Services Area.

Note for chart Aus 235

To accompany Australian Notice to Mariners 645/2019

BRISBANE VESSEL TRAFFIC SERVICES
AREA

Ships are to contact Brisbane Vessel Traffic Services (call sign Brisbane VTS) on VHF channel 12 two hours prior to and when entering and departing the Brisbane Vessel Traffic Services Area.

Note for chart Aus 237

To accompany Australian Notice to Mariners 645/2019

BRISBANE VESSEL TRAFFIC SERVICES
AREA

Ships are to contact Brisbane Vessel Traffic Services (call sign Brisbane VTS) on VHF channel 12 two hours prior to and when entering and departing the Brisbane Vessel Traffic Services Area.

Note for chart Aus 814

To accompany Australian Notice to Mariners 645/2019

BRISBANE VESSEL TRAFFIC SERVICES
AREA

Ships are to contact Brisbane Vessel Traffic Services (call sign Brisbane VTS) on VHF channel 12 two hours prior to and when entering and departing the Brisbane Vessel Traffic Services Area.

Note for chart Aus 236

To accompany Australian Notice to Mariners 645/2019

BRISBANE VESSEL TRAFFIC SERVICES
AREA

Ships are to contact Brisbane Vessel Traffic Services (call sign Brisbane VTS) on VHF channel 12 two hours prior to and when entering and departing the Brisbane Vessel Traffic Services Area.

Note for chart Aus 238

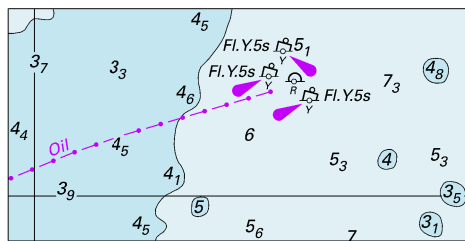
To accompany Australian Notice to Mariners 645/2019

BRISBANE VESSEL TRAFFIC SERVICES
AREA

Ships are to contact Brisbane Vessel Traffic Services (call sign Brisbane VTS) on VHF channel 12 two hours prior to and when entering and departing the Brisbane Vessel Traffic Services Area.

Note for chart Aus 815

To accompany Australian Notice to Mariners 652/2019



© Commonwealth of Australia 2019

Block for chart Aus 607

(61.4 x 30.6mm)