

To accompany Australian Notice to Mariners 51/2019

SYDNEY VESSEL TRAFFIC SERVICE AREA

For entry into Sydney Harbour, vessels approaching Port Jackson are to contact Sydney Vessel Traffic Services (Call Sign Sydney VTS) on VHF channel 13, two hours prior to arrival off port limits.

For entry into Botany Bay, vessels approaching Port Botany are to contact Sydney Vessel Traffic Services (Call Sign Sydney VTS) on VHF channel 12, two hours prior to arrival off port limits.

Note for chart Aus 197

To accompany Australian Notice to Mariners 51/2019

SYDNEY VESSEL TRAFFIC SERVICE AREA

For entry into Sydney Harbour, vessels approaching Port Jackson are to contact Sydney Vessel Traffic Services (Call Sign Sydney VTS) on VHF channel 13, two hours prior to arrival off port limits.

For entry into Botany Bay, vessels approaching Port Botany are to contact Sydney Vessel Traffic Services (Call Sign Sydney VTS) on VHF channel 12, two hours prior to arrival off port limits.

Note for chart Aus 200

To accompany Australian Notice to Mariners 51/2019

SYDNEY VESSEL TRAFFIC SERVICE AREA

For entry into Sydney Harbour, vessels approaching Port Jackson are to contact Sydney Vessel Traffic Services (Call Sign Sydney VTS) on VHF channel 13, two hours prior to arrival off port limits.

For entry into Botany Bay, vessels approaching Port Botany are to contact Sydney Vessel Traffic Services (Call Sign Sydney VTS) on VHF channel 12, two hours prior to arrival off port limits.

Note for chart Aus 809

To accompany Australian Notice to Mariners 59/2019

TRAFFIC SEPARATION

The Traffic Separation Scheme (TSS) shown on this chart is an International Maritime Organization - adopted ships routing system.

The scheme has been established to enhance maritime safety and environment protection.

It is recommended that vessels use the TSS and avoid navigating inshore of the scheme.

Note for chart Aus 336

To accompany Australian Notice to Mariners 51/2019

SYDNEY VESSEL TRAFFIC SERVICE AREA

For entry into Sydney Harbour, vessels approaching Port Jackson are to contact Sydney Vessel Traffic Services (Call Sign Sydney VTS) on VHF channel 13, two hours prior to arrival off port limits.

For entry into Botany Bay, vessels approaching Port Botany are to contact Sydney Vessel Traffic Services (Call Sign Sydney VTS) on VHF channel 12, two hours prior to arrival off port limits.

Note for chart Aus 198

To accompany Australian Notice to Mariners 51/2019

SYDNEY VESSEL TRAFFIC SERVICE AREA

For entry into Sydney Harbour, vessels approaching Port Jackson are to contact Sydney Vessel Traffic Services (Call Sign Sydney VTS) on VHF channel 13, two hours prior to arrival off port limits.

For entry into Botany Bay, vessels approaching Port Botany are to contact Sydney Vessel Traffic Services (Call Sign Sydney VTS) on VHF channel 12, two hours prior to arrival off port limits.

Note for chart Aus 808

To accompany Australian Notice to Mariners 59/2019

TRAFFIC SEPARATION

The Traffic Separation Scheme (TSS) shown on this chart is an International Maritime Organization - adopted ships routing system.

The scheme has been established to enhance maritime safety and environment protection.

It is recommended that vessels use the TSS and avoid navigating inshore of the scheme.

Note for chart Aus 335

To accompany Australian Notice to Mariners 59/2019

TRAFFIC SEPARATION

The Traffic Separation Scheme (TSS) shown on this chart is an International Maritime Organization - adopted ships routing system.

The scheme has been established to enhance maritime safety and environment protection.

It is recommended that vessels use the TSS and avoid navigating inshore of the scheme.

Note for chart Aus 756

To accompany Australian Notice to Mariners 59/2019

TRAFFIC SEPARATION

The Traffic Separation Scheme (TSS) shown on this chart is an International Maritime Organization - adopted ships routing system.

The scheme has been established to enhance maritime safety and environment protection.

It is recommended that vessels use the TSS and avoid navigating inshore of the scheme.

Note for chart Aus 757

To accompany Australian Notice to Mariners 59/2019

TRAFFIC SEPARATION

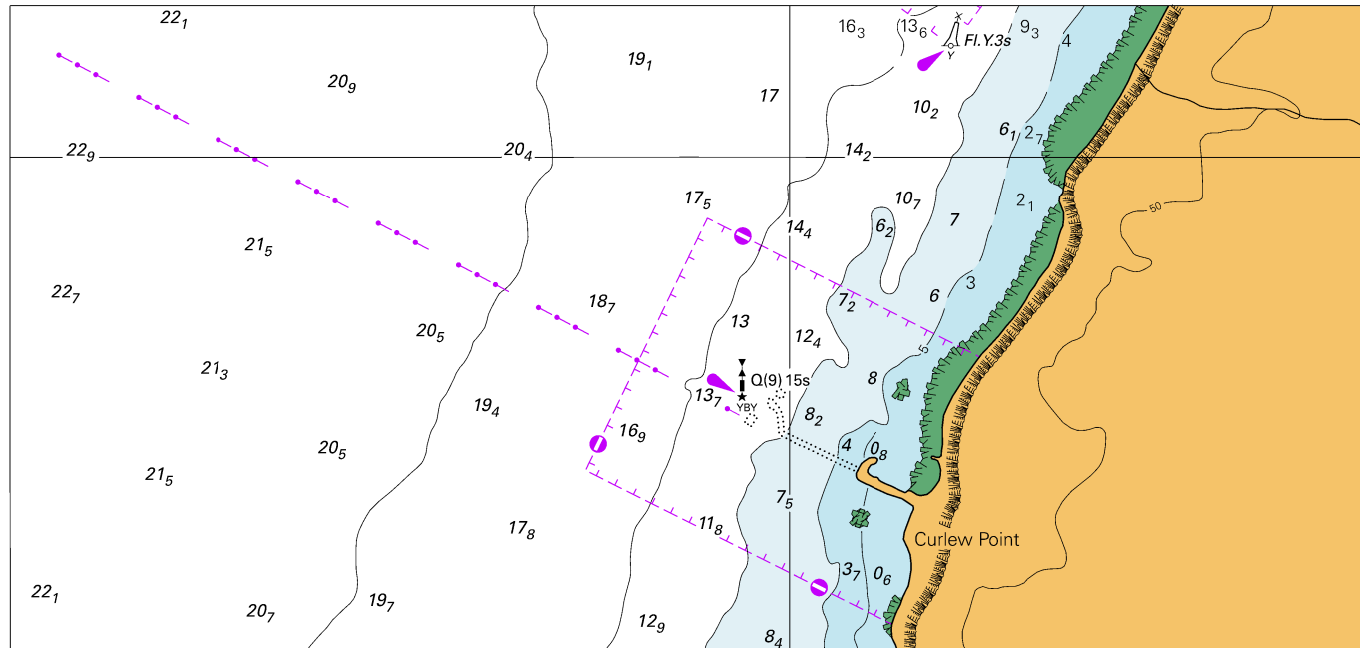
The Traffic Separation Scheme (TSS) shown on this chart is an International Maritime Organization - adopted ships routing system.

The scheme has been established to enhance maritime safety and environment protection.

It is recommended that vessels use the TSS and avoid navigating inshore of the scheme.

Note for chart Aus 758

To accompany Australian Notice to Mariners 61/2019

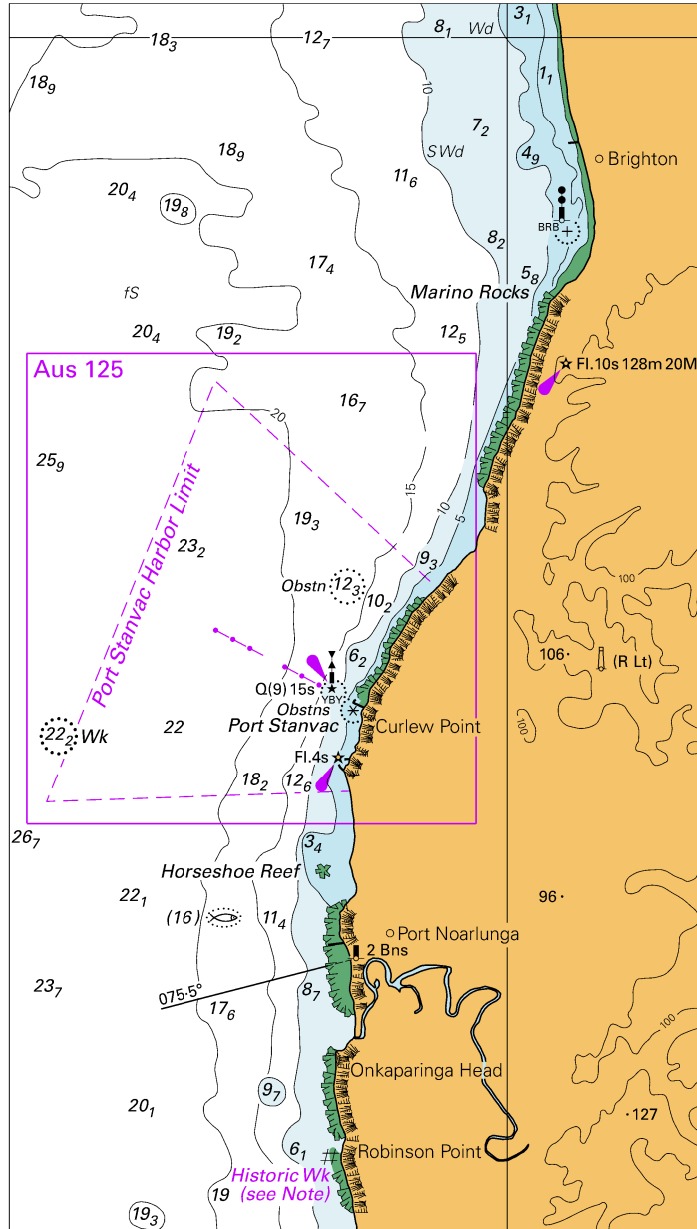


Block for chart Aus 125

© Commonwealth of Australia 2019

(179.5 x 85.0mm)

To accompany Australian Notice to Mariners 61/2019



© Commonwealth of Australia 2019

Block for chart Aus 781

(92.0 x 162.3mm)

