



20 April 2018

Edition 8

AUSTRALIAN NOTICES TO MARINERS

Notices 309 - 343

Published fortnightly by the Australian Hydrographic Office



Australian Notices to Mariners are the authority for correcting charts and publications published by the Australian Hydrographic Office covering Australia, Papua New Guinea, Solomon Islands, Australian Antarctic Territory and Timor-Leste.

Commodore F.T. FREEMAN RAN
Hydrographer of Australia

SECTIONS.

- I. **Australian Notices to Mariners, including blocks and notes.**
- II. **Hydrographic Reports.**
- III. **Navigational Warnings.**

SUPPLEMENTS.

- I. **Tracings**
- II. **Cumulative List of Australian Notices to Mariners.**
- III. **Cumulative List of Temporary and Preliminary Australian Notices to Mariners.**
- IV. **Temporary and Preliminary Notices in force.**
- V. **Amendments to Admiralty List of Lights and Fog Signals (Vol K), Radio Signals (NP 281(2), 282, 283(2), 285, 286(4)) and Sailing Directions (NP 9, 13, 14, 15, 33, 34, 35, 36, 39, 44, 51, 60, 61, 62, 100, 136).**

© Commonwealth of Australia 2018

This work is copyright. Apart from any use permitted under the Copyright Act 1968, no part may be reproduced by any process, adapted, communicated or commercially exploited without prior written permission from The Commonwealth represented by the Australian Hydrographic Office.

IMPORTANT NOTICE

This edition of Notices to Mariners includes all significant information affecting AHO products which the AHO has become aware of since the last edition. All reasonable efforts have been made to ensure the accuracy and completeness of the information, including third party information, on which these updates are based. The AHO regards third parties from which it receives information as reliable, however the AHO cannot verify all such information and errors may therefore exist. The AHO does not accept liability for errors in third party information.

GENERAL INSTRUCTIONS

The substance of these notices should be inserted on the charts affected.

Bearings are referred to the true compass and are reckoned clockwise from North; those relating to lights are given as seen by an observer from seaward.

Positions quoted in notices relate to WGS84 which is the horizontal datum for all charts produced by the Australian Hydrographic Office.

The range quoted for a light is its nominal range.

Depths are with reference to the chart datum of each chart. Heights are above mean high water springs or mean higher high water, as appropriate.

The capital letter (P) or (T) after the number of any notice denotes a preliminary or temporary notice respectively, which are contained separately at the end of the permanent notices.

REPORTING OF DANGERS

Mariners are particularly requested to notify the AUSTRALIAN HYDROGRAPHIC OFFICE, Locked Bag 8801 Wollongong, NSW 2500 (Fax 02-4223 6599, e-mail datacentre@hydro.gov.au or, alternatively by filling in and submitting the [Hydrographic Notes](#) forms located on the web site – www.hydro.gov.au), immediately on the discovery of new dangers or suspected dangers to navigation. For changes or defects in aids to navigation notify AusSAR (Fax 02-6230 6868 or email rccaus@amsa.gov.au).

AUTHORISED USE

Copies of Australian notices are available free of charge from the Australian Hydrographic Office (AHO) website (www.hydro.gov.au) and through the eNotices (email) service (www.hydro.gov.au/enotices/enotices.htm).

Individual Notices may be copied for the purpose of inserting Notice substance on official charts and publications. Paper copies may be printed by chart agents and distributed to customers on a cost recovery basis. Participating chart agents are listed on the AHO website as providing a 'Paper Notices to Mariners' service (www.hydro.gov.au/webapps/jsp/agents/agents-list.jsp). Copies of the notices may not be sold for profit without prior written agreement.

NUMERICAL INDEX OF NOTICES TO MARINERS

Edition No 8

Notices	Aus Chart, INT Chart, ENC Cell, AHP, BA Pubs
309	Inmarsat I-3 to I4 satellite migration
310	Aus 198
311	Aus 809
312	Aus 200, 202
313	Aus 250
314	Aus 301, 701
315	Aus 651
316	Aus 509
317	Aus 13, 26, 27, 28
318	Aus 65, 66, 742, 743
319	Aus 332, 751, 752
320	Aus 125
321	Aus 154
322	SLB 201, 303, 304
323(T)	Aus 200, 202
324(T)	Aus 238
325(T)	Aus 235, 236
326(T)	Aus 249, 250
327(T)	Aus 249, 250
328(T)	Aus 235
329(T)	Aus 235
330(T)	Aus 241
331(T)	Aus 314, 319, 4721, 4722, INT 721, 722
332(T)	Aus 324, 4722, INT 722
333(T)	Aus 319, 320
334(T)	Aus 319, 320, 4721, 4722, INT 721, 722
335(T)	Aus 112, 400, 608, 754, 4708, 4709, 4723, 4725, INT 708, 709, 723, 725
336(T)	Aus 58, 59
337(T)	Aus 112, 754, 4725, INT 725
338(T)	Aus 55, 56
339(T)	Aus 155
340(T)	Aus 143
341(T)	Aus 155
342(T)	Aus 143, 155
343(T)	Aus 158

NUMERICAL INDEX OF CHARTS AFFECTED

Edition No 8

Aus Chart	Notices	INT Chart	Notices
Aus 13	317	INT 708	335(T)
Aus 26	317	INT 709	335(T)
Aus 27	317	INT 721	331(T), 334(T)
Aus 28	317	INT 722	331(T), 332(T), 334(T)
Aus 55	338(T)	INT 723	335(T)
Aus 56	338(T)	INT 725	335(T), 337(T)
Aus 58	336(T)		
Aus 59	336(T)		
Aus 65	318		
Aus 66	318		
Aus 112	335(T), 337(T)		
Aus 125	320		
Aus 143	340(T), 342(T)		
Aus 154	321		
Aus 155	339(T), 341(T), 342(T)		
Aus 158	343(T)		
Aus 198	310		
Aus 200	312, 323(T)		
Aus 202	312, 323(T)		
Aus 235	325(T), 328(T), 329(T)		
Aus 236	325(T)		
Aus 238	324(T)		
Aus 241	330(T)		
Aus 249	326(T), 327(T)		
Aus 250	313, 326(T), 327(T)		
Aus 301	314		
Aus 314	331(T)		
Aus 319	331(T), 333(T), 334(T)		
Aus 320	333(T), 334(T)		
Aus 324	332(T)		
Aus 332	319		
Aus 400	335(T)		
Aus 509	316		
Aus 608	335(T)		
Aus 651	315		
Aus 701	314		
Aus 742	318		
Aus 743	318		
Aus 751	319		
Aus 752	319		
Aus 754	335(T), 337(T)		
Aus 809	311		
Aus 4708	335(T)		
Aus 4709	335(T)		
Aus 4721	331(T), 334(T)		
Aus 4722	331(T), 332(T), 334(T)		
Aus 4723	335(T)		
Aus 4725	335(T), 337(T)		
SLB 201	322		
SLB 303	322		
SLB 304	322		

309 AUSTRALIA - Inmarsat I-3 to I4 satellite migration

Australian Maritime Safety Authority NAVAREAX 13/2018

Inmarsat will be migrating services from the I-3 satellite to the I-4 satellite in 2018 as follows:

Atlantic Ocean Region West (AORW)	April 2018
Pacific Ocean Region (POR)	July 2018
Atlantic Ocean Region East (AORE)	September 2018
Indian Ocean Region (IOR)	October 2018

For further details of the satellite migration plan and new satellite footprints consult Inmarsat at <https://www.inmarsat.com/support/i-3-to-i-4-services-migration>

310 AUSTRALIA - NEW SOUTH WALES - Botany Bay - Light buoy withdrawn

Port Authority of New South Wales Notice 8/2018

Aus 198 [232/2018]

Delete	light buoy	33° 58'.89 S	151° 10'.25 E
--------	------------	--------------	---------------

311 AUSTRALIA - NEW SOUTH WALES - Lake Macquarie Entrance - Wreck

Australian Hydrographic Office

Aus 809 (plan, Lake Macquarie Entrance) [270/2018]

Replace	buoy, with dangerous wreck	33° 05'.19 S	151° 38'.72 E
---------	----------------------------	--------------	---------------

312 AUSTRALIA - NEW SOUTH WALES - Port Jackson - Sydney Harbour Bridge - Nav aids; submarine power cables

Port Authority of New South Wales

Aus 200 [272/2018]

Delete	submarine cable area limit, between	33° 50'.93 S	151° 12'.60 E
	submarine cable area limit, between	33° 50'.93 S	151° 12'.38 E
	submarine cable area limit, between	33° 51'.04 S	151° 12'.23 E
	submarine cable area limit, between	33° 51'.32 S	151° 12'.08 E
	submarine cable area limit, between	33° 50'.97 S	151° 12'.17 E
	submarine cable area limit, between	33° 51'.38 S	151° 11'.73 E
	submarine cable area limit, between	33° 50'.87 S	151° 12'.18 E
	submarine cable area limit, between	33° 51'.06 S	151° 11'.94 E
	submarine cable area limit, between	33° 51'.23 S	151° 11'.72 E
	submarine cable area limit, between	33° 51'.34 S	151° 11'.68 E
	submarine cable area limit, between	33° 51'.16 S	151° 13'.10 E
	submarine cable area limit, between	33° 51'.41 S	151° 12'.96 E

Aus 202 [140/2018]

Insert	accompanying block	33° 51'.2 S	151° 13'.0 E
--------	--------------------	-------------	--------------

Replace	note with accompanying note	33° 52'.40 S	151° 09'.90 E
---------	-----------------------------	--------------	---------------

313 AUSTRALIA - QUEENSLAND - Mackay - Infrastructure

Maritime Safety Queensland

Aus 250 (plan, Mackay Harbour) [236/2018]

Insert	accompanying block	21° 06'.8 S	149° 13'.7 E
--------	--------------------	-------------	--------------

314 AUSTRALIA - QUEENSLAND - Skardon River - Mooring buoys; anchor berths

Transshipment Services Australia

Aus 301 [723/2017]

Insert	lit yellow barrel mooring buoy, <i>Fl. Y.3s</i>	11° 45'.52 S	141° 51'.62 E
--------	-------------------------------------------------	--------------	---------------

Aus 701 [695/2017]

Insert	lit yellow barrel mooring buoy, <i>Fl. Y.3s</i>	11° 45'.33 S	141° 55'.61 E
	lit yellow barrel mooring buoy, <i>Fl. Y.3s</i>	11° 45'.78 S	141° 55'.43 E
	lit yellow barrel mooring buoy, <i>Fl. Y.3s</i>	11° 44'.99 S	141° 51'.78 E
	lit yellow barrel mooring buoy, <i>Fl. Y.3s</i>	11° 45'.52 S	141° 51'.62 E
	anchor berth, desig <i>IA</i>	11° 45'.49 S	141° 54'.86 E
	anchor berth, desig <i>OA1</i>	11° 45'.18 S	141° 51'.31 E

Delete	depth, 15 ₄ m	11° 45'.3 S	141° 51'.0 E
	depth, 10 ₆ m	11° 45'.5 S	141° 54'.7 E
	depth, 14 ₆ m	11° 45'.7 S	141° 51'.6 E

315 PAPUA NEW GUINEA - Muschu Island - Wrecks

National Maritime Safety Authority

Aus 651 [280/2018]

Insert	non dangerous wreck	3° 24'.49 S	143° 33'.84 E
	non dangerous wreck	3° 24'.78 S	143° 34'.14 E
	non dangerous wreck	3° 22'.05 S	143° 32'.69 E

316 PAPUA NEW GUINEA - Panaman Island - Depth

Royal Australian Navy

Aus 509 [1078/2017]

Replace	depth, 16 ₄ m, with depth, 7 ₆ m	11° 03'.2 S	151° 22'.8 E
---------	--------------------------------------------------------	-------------	--------------

317 AUSTRALIA - NORTHERN TERRITORY - Darwin to Bing Bong - Chart note

Australian Hydrographic Office

Aus 13 (plan, Bing Bong) [867/2016]

Insert	accompanying note	15° 37'.80 S	136° 23'.83 E
--------	-------------------	--------------	---------------

Aus 26 [197/2018]

Insert	accompanying note	12° 30'.30 S	130° 58'.03 E
--------	-------------------	--------------	---------------

Aus 27 [148/2018]

Insert	accompanying note	12° 34'.51 S	130° 49'.50 E
--------	-------------------	--------------	---------------

Aus 28 [148/2018]

Insert	accompanying note	12° 28'.51 S	130° 55'.30 E
--------	-------------------	--------------	---------------

318 AUSTRALIA - WESTERN AUSTRALIA - Barrow Island - Town Point - Light buoys withdrawn

Chevron Australia Pty Ltd Notice 1/2018

Aus 65 [647/2017]

Delete	light buoy	20° 47'.1 S	115° 30'.0 E
	light buoy	20° 47'.9 S	115° 30'.7 E
	light buoy	20° 51'.6 S	115° 32'.1 E

Aus 66 [200/2018]

Delete	light buoy	20° 47'.85 S	115° 30'.72 E
--------	------------	--------------	---------------

Aus 742 [900/2017]

Delete	light buoy	20° 51'.6 S	115° 32'.1 E
--------	------------	-------------	--------------

Aus 743 [60/2018]

Delete	light buoy	20° 51'.6 S	115° 32'.1 E
--------	------------	-------------	--------------

319 AUSTRALIA - WESTERN AUSTRALIA - Pelsaert Group - Historic wrecks

Australian Hydrographic Office

Aus 332 [151/2018]

Move	historic wreck	28° 53'.45 S	113° 49'.66 E
	to	28° 53'.03 S	113° 48'.80 E
	historic wreck	28° 59'.10 S	113° 56'.14 E
	to	28° 59'.37 S	113° 55'.83 E

Aus 751 [151/2018]

Move	historic wreck	28° 53'.45 S	113° 49'.66 E
	to	28° 53'.03 S	113° 48'.80 E
	historic wreck	28° 59'.10 S	113° 56'.14 E
	to	28° 59'.37 S	113° 55'.83 E

Aus 752 [814/2016]

Move	historic wreck	28° 59'.10 S	113° 56'.14 E
	to	28° 59'.37 S	113° 55'.83 E

320 AUSTRALIA - SOUTH AUSTRALIA - Cape Jervis - Historic wreck

Australian Hydrographic Office

Aus 125 (plan, Wirrina Cove) [103/2018]

Insert	accompanying note in N border	35° 29'.62 S	138° 13'.60 E
--------	-------------------------------	--------------	---------------

Aus 125 (plan, Cape Jervis) [103/2018]

Insert	#, with magenta legend, <i>Historic Wk (see Note)</i>	35° 36'.600 S	138° 05'.400 E
--------	-------------------------------------------------------	---------------	----------------

321 AUSTRALIA - VICTORIA - Port Phillip - Williamstown - Depths

Port of Melbourne Corporation

Aus 154 [105/2018]

Insert	accompanying block A	37° 51'.64 S	144° 54'.85 E
	accompanying block B	37° 48'.50 S	144° 53'.90 E

322 SOLOMON ISLANDS - Florida Islands - Depth disproved

Australian Hydrographic Office

SLB 201 [158/2018]

Delete	depth, 18 ₂ m, enclosed by contour	8° 59'.5 S	159° 58'.2 E
--------	-----------------------------------------------	------------	--------------

SLB 303 [158/2018]

Delete	depth, 18 ₂ m, enclosed by contour	8° 59'.5 S	159° 58'.2 E
--------	-----------------------------------------------	------------	--------------

SLB 304 [158/2018]

Delete	depth, 18 ₂ m, enclosed by contour	8° 59'.5 S	159° 58'.2 E
--------	-----------------------------------------------	------------	--------------

323(T)/2018 AUSTRALIA - NEW SOUTH WALES - Port Jackson - Dawes Point - Harbour works; exclusion zone
Port Authority of New South Wales Notice 7/2018

Harbour works are being conducted in an exclusion zone marked by buoys and lights in an area bounded by the following positions:

33° 51'.22 S 151° 12'.61
33° 51'.20 S 151° 12'.56
33° 51'.23 S 151° 12'.54
33° 51'.25 S 151° 12'.59.

Chart temporarily affected - Aus 200 - Aus 202

324(T)/2018 AUSTRALIA - QUEENSLAND - Brisbane River - Humbug Reach - Harbour works
Maritime Safety Queensland Notice 115(T)/2018

The barge *Calliope* and support vessels are conducting harbour works in the vicinity of position 27° 28'.31 S 153° 03'.15 E.

Vessels will display appropriate lights and shapes and monitor VHF Ch 13.

Mariners are advised to navigate with caution in the area.

Chart temporarily affected - Aus 238

325(T)/2018 AUSTRALIA - QUEENSLAND - Flinders Reef - Light buoy restored
Former Notice - 666(T)/2017 is cancelled
Maritime Safety Queensland Notice 106/2018

A virtual AIS north cardinal exists in position (26° 58'.22 S 153° 29'.44 E).

Chart temporarily affected - Aus 235 - Aus 236

326(T)/2018 AUSTRALIA - QUEENSLAND - Hay Point - Scientific instrument
Maritime Safety Queensland Notice 110(T)/2018

A scientific instrument marked by a special light buoy, *Fl.Y.4s* exists in position 21° 17'.46 S 149° 17'.98 E.

Chart temporarily affected - Aus 249 - Aus 250

327(T)/2018 AUSTRALIA - QUEENSLAND - Mackay - Dangerous Reef - Light buoy off station
Former Notice - 290(T)/2018 is cancelled
Maritime Safety Queensland Notice 116(T)/2018

The east cardinal light buoy, *Q(3)10s* (21° 08'.06 S 149° 14'.94 E), is off station; a special light buoy, *Fl.2.5s* exists in position 21° 07'.95 S 149° 14'.87 E .

Chart temporarily affected - Aus 249 - Aus 250

328(T)/2018 AUSTRALIA - QUEENSLAND - Mooloolaba - Dredging
Former Notice - 921(T)/2017 is cancelled
Maritime Safety Queensland Notice 111(T)/2018

The dredge *Saibai* is conducting dredging operations in the entrance channel (26° 40'.75 S 153° 07'.90 E).

The dredge will display appropriate lights and shapes and will monitor VHF Ch 12,16 and Ch 73. A floating pipeline exists from the dredge.

Mariners are advised to navigate with caution in the area.

Chart temporarily affected - Aus 235

329(T)/2018 AUSTRALIA - QUEENSLAND - Mooloolaba - Shoaling

Former Notice - 216(T)/2018 is cancelled
Maritime Safety Queensland Notice 111(T)/2018

Shoaling exists from the end of the eastern breakwater (26° 40'.74 S 153° 07'.95 E) extending in a westerly direction towards the centreline of the channel.

Mariners are advised to navigate with caution in the area.

Chart temporarily affected - Aus 235**330(T)/2018 AUSTRALIA - QUEENSLAND - Urangan Harbour - Dredging operations; harbour works**

Maritime Safety Queensland Notice 190(T)/2018

Dredging operations and harbour works associated with the construction of a new pontoon are in progress at Urangan Harbour (25° 17'.70 S 152° 54'.60 E).

Vessels will display appropriate lights and shapes and will monitor VHF Ch 16.

Mariners are advised to navigate with caution in the area.

Chart temporarily affected - Aus 241**331(T)/2018 AUSTRALIA - TIMOR SEA - Osborn Passage - Seismic survey**

MV Polarcus Naila

MV Polarcus Naila, with a 9260m towed array, and support vessels *Mermaid Vantage* and *Empress* are conducting a seismic survey in an area bounded by the following positions:

11° 49'.93 S 124° 31'.72 E
12° 13'.14 S 125° 03'.34 E
12° 33'.00 S 125° 03'.38 E
13° 23'.90 S 124° 25'.05 E
12° 55'.87 S 123° 46'.76 E
12° 42'.61 S 123° 46'.78 E
12° 25'.04 S 123° 57'.84 E.

Vessels will display appropriate lights and shapes.

Mariners are advised to navigate with caution in the area. 6M clearance requested.

Chart temporarily affected - Aus 314 - Aus 319 - Aus 4721 (INT 721) - Aus 4722 (INT 722)**332(T)/2018 AUSTRALIA - WESTERN AUSTRALIA - Broome - Drill rig northwestwards moved**

Former Notice - 992(T)/2017 is cancelled
MODU *ENSCO 5006*

Cancel this notice on receipt.

Chart formerly affected - Aus 324 - Aus 4722 (INT 722)**333(T)/2018 AUSTRALIA - WESTERN AUSTRALIA - Browse Island - Subsea operations complete**

Former Notice - 624(T)/2017 is cancelled
Technip FMC Oceania

Cancel this notice on receipt.

Chart formerly affected - Aus 319 - Aus 320**334(T)/2018 AUSTRALIA - WESTERN AUSTRALIA - Browse Island - Drill rig northwestwards**

MODU *ENSCO 5006*

Drill rig *ENSCO 5006* is conducting drilling operations in position 13° 49'.48 S 123° 12'.81 E.

Chart temporarily affected - Aus 319 - Aus 320 - Aus 4721 (INT 721) - Aus 4722 (INT 722)

335(T)/2018 AUSTRALIA - WESTERN AUSTRALIA - Christmas Island to Perth - Cable operations complete

Former Notice - 258(T)/2018 is cancelled
 Australian Maritime Safety Authority

Cancel this notice on receipt.

Chart formerly affected - Aus 112 - Aus 400 - Aus 608 - Aus 754 - Aus 4708 (INT 708) - Aus 4709 (INT 709) - Aus 4723 (INT 723) - Aus 4725 (INT 725)

336(T)/2018 AUSTRALIA - WESTERN AUSTRALIA - Dampier - Facilities Channel - Light unlit

Pilbara Ports Authority Notice 5(T)/2018

The front lead light, *F & Al.WRG.48m 3M* (20° 37'.06 S 116° 45'.11 E) is unlit.

Chart temporarily affected - Aus 58 - Aus 59

337(T)/2018 AUSTRALIA - WESTERN AUSTRALIA - Fremantle - Cable operations

Australian Maritime Safety Authority Auscoast Warning 77/2018

Vessel *Ile De Batz* is conducting submarine cable laying operations between the following positions:

31° 40'.8 S 114° 43'.2 E

31° 52'.7 S 115° 40'.6 E.

Mariners are advised to navigate with caution in the area. 1M clearance requested.

Chart temporarily affected - Aus 112 - Aus 754 - Aus 4725 (INT 725)

338(T)/2018 AUSTRALIA - WESTERN AUSTRALIA - Port Walcott - Survey operations

Department of Transport WA Notice 62/2018

The vessel *Pure Adrenalin* is conducting survey operations at Cape Lambert (20° 34'.10 S 117° 12'.50 E) channel, swing basin and berths.

The vessel will display appropriate lights and shapes and will monitor VHF Ch 16.

Mariners are advised to navigate with caution in the area.

Chart temporarily affected - Aus 55 - Aus 56

339(T)/2018 AUSTRALIA - VICTORIA - Port Phillip - Beaumaris Bay - Light beacon relit

Former Notice - 262(T)/2018 is cancelled

Parks Victoria Notice 133/2018

Cancel this notice on receipt.

Chart formerly affected - Aus 155

340(T)/2018 AUSTRALIA - VICTORIA - Port Phillip - Frankston - Light beacon unlit

Parks Victoria Notice 136(T)/2018

The special light beacon, *Fl.Y.6s* (38° 09'.11 S 145° 06'.48 E) is unlit.

Chart temporarily affected - Aus 143

341(T)/2018 AUSTRALIA - VICTORIA - Port Phillip - Wyndham Marina - Light unlit

Parks Victoria Notice 143(T)/2018

The light, *WRG 3M* (37° 58'.15 S 144° 42'.52 E) is unlit.

Chart temporarily affected - Aus 155

342(T)/2018 AUSTRALIA - VICTORIA - Port Phillip - Sandringham - Dredging operations completed

Former Notice - 176(T)/2018 is cancelled

Parks Victoria Notice 144/2018

Cancel this notice on receipt.

Chart formerly affected - Aus 143 - Aus 155

343(T)/2018 AUSTRALIA - VICTORIA - Port Phillip - Martha Point - Light buoy off station

Parks Victoria Notice 145(T)/2018

The special light buoy, *F(4)Y.12s* (38° 18'.19 S 144° 58'.64 E), is off station.

Chart temporarily affected - Aus 158

II

HYDROGRAPHIC REPORTS

NIL

III

NAVIGATION WARNINGS

The Australian Hydrographic Office will no longer compile Section III of the Australian Notices to Mariners. For the most up to date navigation warnings please refer to:

AMSA Navigation Warnings

<http://amsa.gov.au/search-and-rescue/distress-and-safety-comms/msi/msi-email/index.asp>

New Zealand Notices to Mariners (Navarea XIV warnings)

<http://www.linz.govt.nz/sea/maritime-safety/notices-mariners>

To accompany Australian Notice to Mariners 312/2018

CABLE AREA

Vessels are warned not to anchor, trawl or sweep within the area on account of the existence of submarine cables.

Note for chart Aus 202

To accompany Australian Notice to Mariners 317/2018

DREDGED AREAS

Depths in dredged areas, although generally maintained, may be less than charted. For the latest information, consult the Harbour Master.

Note for chart Aus 26

To accompany Australian Notice to Mariners 317/2018

DREDGED AREAS

Depths in dredged areas, although generally maintained, may be less than charted. For the latest information, consult the Harbour Master.

Note for chart Aus 28

To accompany Australian Notice to Mariners 317/2018

DREDGED AREAS

Depths in dredged areas, although generally maintained, may be less than charted. For the latest information, consult the Harbour Master.

Note for chart Aus 13

To accompany Australian Notice to Mariners 317/2018

DREDGED AREAS

Depths in dredged areas, although generally maintained, may be less than charted. For the latest information, consult the Harbour Master.

Note for chart Aus 27

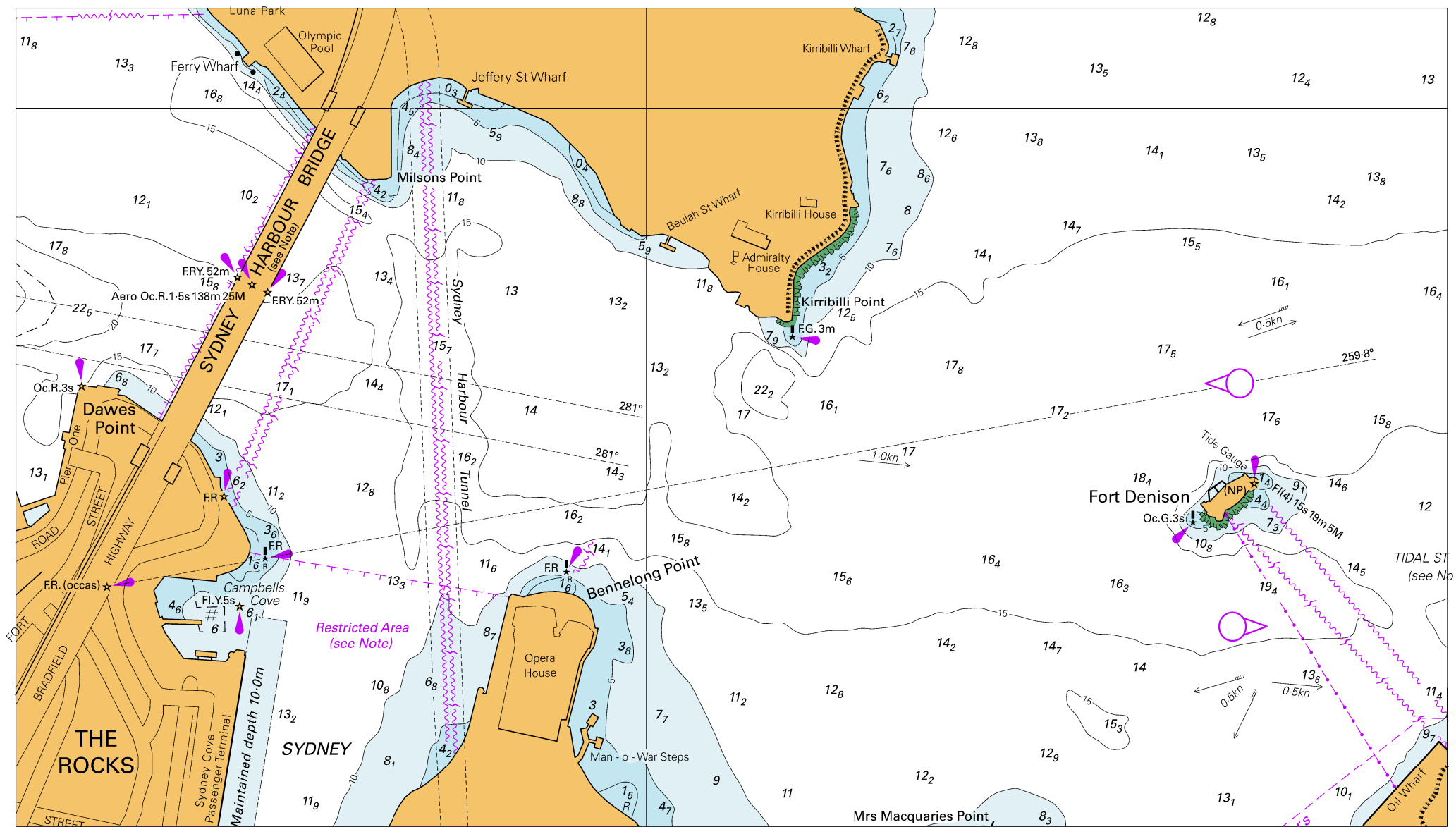
To accompany Australian Notice to Mariners 320/2018

HISTORIC WRECK

The site of an historic wreck is protected from unauthorised interference. For details see Seafarers Handbook for Australian Waters AHP 20.

Note for chart Aus 125

To accompany Australian Notice to Mariners 312/2018



Block for Chart Aus 202

© Commonwealth of Australia 2018

(268.5 x 153.5mm)

To accompany Australian Notice to Mariners 313/2018

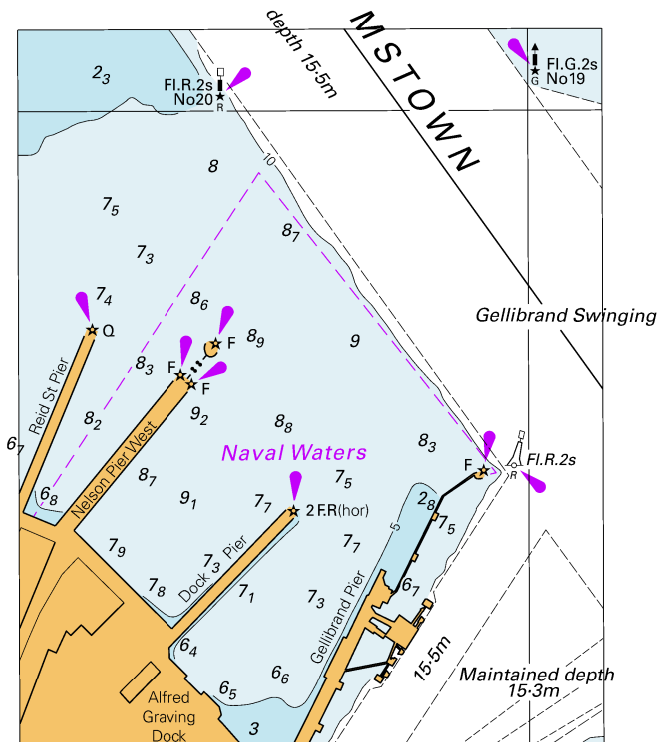


Block for Chart Aus 250

© Commonwealth of Australia 2018

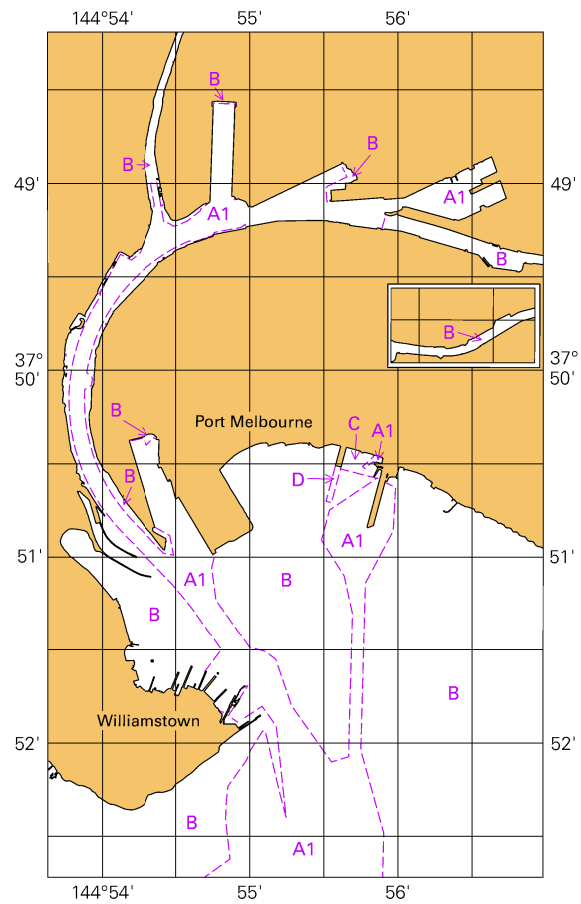
(114.1 x 101.1mm)

To accompany Australian Notice to Mariners 321/2018



© Commonwealth of Australia 2018
Block A for Chart Aus 154 (77.2 x 94.5mm)

To accompany Australian Notice to Mariners 321/2018
Zone of Confidence (ZOC) Diagram



© Commonwealth of Australia 2018
Block B for Chart Aus 154 (65-8 x 110-4mm)