




AUSTRALIAN NOTICES TO MARINERS

Notices 267 - 308

**Including
Cumulative List – April 2018
List of Temporary and Preliminary Notices in force** 

Published fortnightly by the Australian Hydrographic Office

Australian Notices to Mariners are the authority for correcting charts and publications published by the Australian Hydrographic Office covering Australia, Papua New Guinea, Solomon Islands, Australian Antarctic Territory and Timor-Leste.

Commodore F.T. FREEMAN RAN
Hydrographer of Australia

SECTIONS.

- I. **Australian Notices to Mariners, including blocks and notes.**
- II. **Hydrographic Reports.**
- III. **Navigational Warnings.**

SUPPLEMENTS.

- I. **Tracings**
- II. **Cumulative List of Australian Notices to Mariners.**
- III. **Cumulative List of Temporary and Preliminary Australian Notices to Mariners.**
- IV. **Temporary and Preliminary Notices in force.**
- V. **Amendments to Admiralty List of Lights and Fog Signals (Vol K), Radio Signals (NP 281(2), 282, 283(2), 285, 286(4)) and Sailing Directions (NP 9, 13, 14, 15, 33, 34, 35, 36, 39, 44, 51, 60, 61, 62, 100, 136).**

© Commonwealth of Australia 2018

This work is copyright. Apart from any use permitted under the Copyright Act 1968, no part may be reproduced by any process, adapted, communicated or commercially exploited without prior written permission from The Commonwealth represented by the Australian Hydrographic Office.

IMPORTANT NOTICE

This edition of Notices to Mariners includes all significant information affecting AHO products which the AHO has become aware of since the last edition. All reasonable efforts have been made to ensure the accuracy and completeness of the information, including third party information, on which these updates are based. The AHO regards third parties from which it receives information as reliable, however the AHO cannot verify all such information and errors may therefore exist. The AHO does not accept liability for errors in third party information.

GENERAL INSTRUCTIONS

The substance of these notices should be inserted on the charts affected.

Bearings are referred to the true compass and are reckoned clockwise from North; those relating to lights are given as seen by an observer from seaward.

Positions quoted in notices relate to WGS84 which is the horizontal datum for all charts produced by the Australian Hydrographic Office.

The range quoted for a light is its nominal range.

Depths are with reference to the chart datum of each chart. Heights are above mean high water springs or mean higher high water, as appropriate.

The capital letter (P) or (T) after the number of any notice denotes a preliminary or temporary notice respectively, which are contained separately at the end of the permanent notices.

REPORTING OF DANGERS

Mariners are particularly requested to notify the AUSTRALIAN HYDROGRAPHIC OFFICE, Locked Bag 8801 Wollongong, NSW 2500 (Fax 02-4223 6599, e-mail datacentre@hydro.gov.au or, alternatively by filling in and submitting the [Hydrographic Notes](#) forms located on the web site – www.hydro.gov.au), immediately on the discovery of new dangers or suspected dangers to navigation. For changes or defects in aids to navigation notify AusSAR (Fax 02-6230 6868 or email rccaus@amsa.gov.au).

AUTHORISED USE

Copies of Australian notices are available free of charge from the Australian Hydrographic Office (AHO) website (www.hydro.gov.au) and through the eNotices (email) service (www.hydro.gov.au/enotices/enotices.htm).

Individual Notices may be copied for the purpose of inserting Notice substance on official charts and publications. Paper copies may be printed by chart agents and distributed to customers on a cost recovery basis. Participating chart agents are listed on the AHO website as providing a 'Paper Notices to Mariners' service (www.hydro.gov.au/webapps/jsp/agents/agents-list.jsp). Copies of the notices may not be sold for profit without prior written agreement.

NUMERICAL INDEX OF NOTICES TO MARINERS

Edition No 7

Notices	Aus Chart, INT Chart, ENC Cell, AHP, BA Pubs
267	SLB 101
268	Aus 270
269	Amendment to Seafarers Handbook for Australian Waters - 4th Edition - Erratum
270	Aus 809
271	Aus 208
272	Aus 197, 200
273	Aus 4, 6, 255, 257, 258, 262, 263, 264
274	Aus 615
275	Aus 244, 271
276	Aus 241
277	Aus 259, 267, 828
278	Aus 247
279	Aus 683
280	Aus 651
281	Aus 293, 299
282	Aus 293, 299
283	Aus 83
284	Aus 348, 4728, INT 728
285	Cumulative List of Australian Notices to Mariners - April 2018
286(T)	Aus 193
287(T)	Aus 489, 809
288(T)	Aus 250
289(T)	Aus 249, 250
290(T)	Aus 249, 250
291(T)	Aus 236
292(T)	Aus 252, 253, 824
293(T)	Aus 4
294(T)	Aus 674, 677
295(T)	Aus 309, 722, 4721, INT 721
296(T)	Aus 312
297(T)	Aus 326, 4722, INT 722
298(T)	Aus 326
299(T)	Aus 328, 4723, INT 723
300(T)	Aus 328
301(T)	Aus 328, 329, 4723, 4725, INT 723, 725
302(T)	Aus 328, 329, 744, 745
303(T)	Aus 327
304(T)	Aus 40, 732, 733
305(T)	Aus 348, 4709, 4728, INT 709, 728
306(T)	Aus 158
307(T)	Aus 143
308(T)	TEMPORARY AND PRELIMINARY NOTICES

NUMERICAL INDEX OF CHARTS AFFECTED

Edition No 7

Aus Chart	Notices
Aus 4	273, 293(T)
Aus 6	273
Aus 40	304(T)
Aus 83	283
Aus 143	307(T)
Aus 158	306(T)
Aus 193	286(T)
Aus 197	272
Aus 200	272
Aus 208	271
Aus 236	291(T)
Aus 241	276
Aus 244	275
Aus 247	278
Aus 249	289(T), 290(T)
Aus 250	288(T), 289(T), 290(T)
Aus 252	292(T)
Aus 253	292(T)
Aus 255	273
Aus 257	273
Aus 258	273
Aus 259	277
Aus 262	273
Aus 263	273
Aus 264	273
Aus 267	277
Aus 270	268
Aus 271	275
Aus 293	281, 282
Aus 299	281, 282
Aus 309	295(T)
Aus 312	296(T)
Aus 326	297(T), 298(T)
Aus 327	303(T)
Aus 328	299(T), 300(T), 301(T), 302(T)
Aus 329	301(T), 302(T)
Aus 348	284, 305(T)
Aus 489	287(T)
Aus 615	274
Aus 651	280
Aus 674	294(T)
Aus 677	294(T)
Aus 683	279
Aus 722	295(T)
Aus 732	304(T)
Aus 733	304(T)
Aus 744	302(T)
Aus 745	302(T)
Aus 809	270, 287(T)
Aus 824	292(T)
Aus 828	277
Aus 4709	305(T)
Aus 4721	295(T)
Aus 4722	297(T)

Aus Chart	Notices
Aus 4723	299(T), 301(T)
Aus 4725	301(T)
Aus 4728	284, 305(T)
SLB 101	267

INT Chart	Notices
INT 709	305(T)
INT 721	295(T)
INT 722	297(T)
INT 723	299(T), 301(T)
INT 725	301(T)
INT 728	284, 305(T)

267 AUSTRALIA - Products - New Charts, New Editions, Withdrawn Charts
UKHO , Australian Hydrographic Office

New Charts

Chart	Title and Geographical limits	Scale	Publication Date	Remarks
NIL				

New Electronic Navigation Chart (Aus ENC)

Cell Name	Title	Publication Date	Remarks
NIL			

New Editions and Withdrawn Charts

Chart	Title	Scale	Publication Date	Remarks
SLB 101 Edition 2	South Pacific Ocean - Solomon Islands - Anchorage in Guadalcanal Island Plans: Honiara Lungga Roads Marau Sound	1:5 000 1:20 000 1:50 000	6th April 2018	New Edition to incorporate latest bathymetric data Chart SLB 101 Edition 1 dated 11 August 2017 is now superseded and must be withdrawn from use.

Admiralty publication

NP No	Title	Date	Remarks
NP283(2)	Admiralty List of Radio Signals. Maritime Safety Information Services. The Americas, Far East and Oceania 2018/19.	5/4/2018	The 2017/2018 Edition of NP283(2) is cancelled.

Chart permanently withdrawn

Charts listed above as withdrawn no longer meet chart carriage requirements and should be marked as "superseded" and replaced with the new chart/ new edition listed prior to passage through the area covered by the new chart.

When placing orders with a chart agent between notice of forthcoming edition and its publication, mariners should advise whether their order pertains to the current edition or the new edition.

For further details refer to the AHS website at www.hydro.gov.au for new edition and new chart stock arrival information.

268 AUSTRALIA - Product - Erratum

Australian Hydrographic Office

NTM 237/2018 in edition 6 did not include accompanying blocks. Accompanying blocks are attached.

269 AUSTRALIA - Product - Amendment to Seafarers Handbook for Australian Waters - 4th Edition - Erratum

Department of Transport WA

NTM 231/2018 in edition 6 did not include accompanying block for page 254. Accompanying block is attached.

270 AUSTRALIA - NEW SOUTH WALES - Lake Macquarie Entrance - Depths

Fugro LADS

Aus 809 (plan, Lake Macquarie Entrance) [1056/2017]

Insert	accompanying block	33° 05'.00 S	151° 39'.41 E
--------	--------------------	--------------	---------------

271 AUSTRALIA - NEW SOUTH WALES - Newcastle - Light withdrawn

Port Authority of New South Wales

Aus 208 [94/2018]

Delete	light	32° 55'.44 S	151° 47'.34 E
	building, with legend Pilots	32° 55'.44 S	151° 47'.34 E

272* AUSTRALIA - NEW SOUTH WALES - North Head - Historic wreck eastwards

Office of Environment and Heritage NSW , Scott Willan , Port Authority of New South Wales

Aus 197 [233/2018]

Move	historic wreck	33° 49'.67 S	151° 20'.51 E
	to	33° 49'.67 S	151° 21'.51 E

Aus 200 [233/2018]

Move	historic wreck	33° 49'.67 S	151° 20'.51 E
	to	33° 49'.668 S	151° 21'.508 E

273 AUSTRALIA - QUEENSLAND - Abbot Point to Karumba - Chart note

Australian Hydrographic Office

Aus 4 [723/2017]

Insert	accompanying note	12° 29'.69 S	141° 47'.92 E
--------	-------------------	--------------	---------------

Aus 6 [545/2017]

Insert	accompanying note	17° 23'.65 S	140° 47'.10 E
--------	-------------------	--------------	---------------

Aus 255 [2/2018]

Insert	accompanying note	19° 45'.40 S	148° 08'.50 E
--------	-------------------	--------------	---------------

Aus 257 [146/2018]

Insert	accompanying note	19° 16'.95 S	146° 50'.33 E
--------	-------------------	--------------	---------------

Aus 258 (plan, Mourilyan Harbour) [1012/2017]

Insert	accompanying note	17° 35'.60 S	146° 07'.30 E
--------	-------------------	--------------	---------------

Aus 262 [688/2017]

Insert	accompanying note	16° 55'.10 S	145° 45'.30 E
--------	-------------------	--------------	---------------

Aus 263 [851/2017]

Insert	accompanying note	16° 55'.30 S	145° 48'.10 E
--------	-------------------	--------------	---------------

Aus 264 [898/2017]

Insert	accompanying note	16° 56'.94 S	145° 45'.78 E
--------	-------------------	--------------	---------------

274 AUSTRALIA - QUEENSLAND - Coral Sea - Holmes Reefs - Wrecks

Peter Sayre

Aus 615 (plan, Flora Reef and Holmes Reefs) [1348/2015]

Delete	stranded wreck	16° 32'.5 S	147° 50'.1 E
	stranded wreck	16° 32'.7 S	147° 50'.1 E

275 AUSTRALIA - QUEENSLAND - Gladstone - Clinton Wharves - Light buoys

Maritime Safety Queensland Notice 85/2018

Aus 244 [236/2018]

Replace	virtual AIS with special spar light buoy, <i>Fl. Y. 4s</i> , with topmark	23° 49'.55 S	151° 14'.82 E
	virtual AIS with special spar light buoy, <i>Fl. Y. 4s</i> , with topmark	23° 49'.60 S	151° 14'.80 E
	virtual AIS with special spar light buoy, <i>Fl. Y. 4s</i> , with topmark	23° 49'.56 S	151° 14'.88 E

Aus 271 [236/2018]

Replace	virtual AIS with special spar light buoy, <i>Fl. Y. 4s</i> , with topmark	23° 49'.55 S	151° 14'.82 E
	virtual AIS with special spar light buoy, <i>Fl. Y. 4s</i> , with topmark	23° 49'.60 S	151° 14'.80 E
	virtual AIS with special spar light buoy, <i>Fl. Y. 4s</i> , with topmark	23° 49'.56 S	151° 14'.88 E

276 AUSTRALIA - QUEENSLAND - Great Sandy Strait - South Bank - Light buoy withdrawn

Maritime Safety Queensland

Aus 241 [53/2018]

Delete	light buoy	25° 26'.5 S	152° 54'.9 E
--------	------------	-------------	--------------

277 AUSTRALIA - QUEENSLAND - Lucinda - Depths; topmarks

Port of Townsville

Aus 259 [894/2017]

Insert	accompanying block	18° 30'.8 S	146° 21'.5 E
--------	--------------------	-------------	--------------

Aus 267 [NE 9/3/2018]

Insert	triangular topmark, apex down	18° 31'.548 S	146° 20'.134 E
	triangular topmark, apex up	18° 31'.387 S	146° 20'.543 E
	triangle topmark, apex down	18° 31'.451 S	146° 19'.717 E

Aus 828 [240/2018]

Insert	accompanying block	18° 30'.8 S	146° 25'.2 E
--------	--------------------	-------------	--------------

278 AUSTRALIA - QUEENSLAND - Rosslyn Bay - Depths

Maritime Safety Queensland

Aus 247 (plan, Rosslyn Bay) [239/2018]

Insert	accompanying block	23° 09'.50 S	150° 47'.50 E
--------	--------------------	--------------	---------------

279 PAPUA NEW GUINEA - Kieta Harbour to Gero Reef - Wrecks

National Maritime Safety Authority PNG

Aus 683 (plan, Approaches to Kieta Harbour and Anewa Bay) [899/2017]

Insert	safe clearance depth, 42m, enclosed by danger circle with legend, <i>Wk</i>	6° 12'.03 S	155° 38'.33 E
	safe clearance depth, 50m, enclosed by danger circle with legend, <i>Wk</i>	6° 10'.66 S	155° 42'.07 E

Aus 683 (plan, Kieta Harbour) [899/2017]

Insert	safe clearance depth, 42m, enclosed by danger circle with legend, <i>Wk</i>	6° 12'.034 S	155° 38'.331 E
--------	---	--------------	----------------

280 PAPUA NEW GUINEA - Wewak - Light range amended

Australian Maritime Safety Authority

Aus 651 (plan, Wewak Harbour) [288/2016]

Amend	light range to 3M	3° 33'.72 S	143° 38'.88 E
	light range to 3M	3° 33'.23 S	143° 37'.99 E

Aus 651 (plan, Wewak Wharves) [288/2016]

Amend	light range to 3M	3° 33'.72 S	143° 38'.88 E
-------	-------------------	-------------	---------------

281 AUSTRALIA - TORRES STRAIT - Hammond Island - Bruce Point - Depth

Maritime Safety Queensland

Aus 293 [1014/2017]

Insert	depth, 3 ₂ m, and extend contour E to enclose	10° 33'.684 S	142° 13'.297 E
--------	--	---------------	----------------

Delete	depth, 4m	10° 33'.67 S	142° 13'.28 E
--------	-----------	--------------	---------------

Aus 299 [1014/2017]

Insert	depth, 3 ₂ m, and extend contour E to enclose	10° 33'.684 S	142° 13'.297 E
--------	--	---------------	----------------

Delete	depth, 4m	10° 33'.67 S	142° 13'.28 E
--------	-----------	--------------	---------------

282 AUSTRALIA - TORRES STRAIT - Horn Island - Wasaga - Foul ground

Australian Hydrographic Office

Aus 293 [281/2018]

Delete	#	10° 35'.49 S	142° 14'.76 E
--------	---	--------------	---------------

Aus 299 [281/2018]

Delete	#	10° 35'.49 S	142° 14'.76 E
--------	---	--------------	---------------

283 AUSTRALIA - WESTERN AUSTRALIA - Recruit Bay - Rock

Eco Abrolhos

Aus 83 (plan, Recruit Bay) [727/2014]

Replace	depth, 6m, with rock awash enclosed by danger circle	28° 29'.18 S	113° 44'.90 E
---------	--	--------------	---------------

284 AUSTRALIA - SOUTH AUSTRALIA - Cape Banks - Light range reduced

Australian Maritime Safety Authority

Aus 348 [706/2016]

Amend	light range to 15M	37° 53'.9 S	140° 22'.6 E
-------	--------------------	-------------	--------------

Aus 4728 (INT 728) [904/2017]

Amend	light range to 15M	37° 53'.9 S	140° 22'.6 E
-------	--------------------	-------------	--------------

285 AUSTRALIA - Cumulative List of Australian Notices to Mariners - April 2018

Australian Hydrographic Office

The Cumulative List of Australian Notices to Mariners - April 2018 is issued as an [accompanying supplement](#). It lists all permanent notices affecting charts in the Area of Australian Charting Responsibility published in the preceding two years since Edition 7 of 2016 dated 8 April 2016, and includes Edition 7 of 2018 dated 6 April 2018. It will be revised in October 2018.

A supplement is available on the website which is revised fortnightly.

286(T)/2018 AUSTRALIA - NEW SOUTH WALES - Jervis Bay - Bowen Island - Light buoy
Royal Australian Navy

A special light buoy, Q.R, exists in position 35° 06'.30 S 150° 46'.80 E.

Chart temporarily affected - Aus 193

287(T)/2018 AUSTRALIA - NEW SOUTH WALES - Newcastle - Seismic survey
Advent Energy Ltd

On or about 13 April 2018, the PMG *Pride*, with a 900m towed array, will be conducting a seismic survey in an area bounded by the following positions:

33° 09'.17 S 151° 54'.84 E

33° 10'.42 S 151° 53'.14 E

33° 11'.84 S 151° 54'.62 E

33° 10'.60 S 151° 56'.32 E.

Vessels will display appropriate lights and shapes.

Mariners are advised to navigate with caution in the area. 2M clearance requested.

Chart temporarily affected - Aus 489 - Aus 809

288(T)/2018 AUSTRALIA - QUEENSLAND - Mackay - Dredging operations complete
Former Notice - 985(T)/2017 is cancelled
Maritime Safety Queensland

Cancel this notice on receipt.

Chart formerly affected - Aus 250

289(T)/2018 AUSTRALIA - QUEENSLAND - Mackay - Scientific instruments recovered
Former Notice - 69(T)/2017 is cancelled
Maritime Safety Queensland

Cancel this notice on receipt.

Chart formerly affected - Aus 249 - Aus 250

290(T)/2018 AUSTRALIA - QUEENSLAND - Mackay - Dangerous Reef - Light buoy off station
Maritime Safety Queensland Notice 94(T)/2018

The east cardinal light buoy, Q(3)10s (21° 08'.06 S 149° 14'.94 E), is off station.

Chart temporarily affected - Aus 249 - Aus 250

291(T)/2018 AUSTRALIA - QUEENSLAND - Moreton Bay - Pelican Banks - Beacon damaged
Maritime Safety Queensland

The port lateral beacon, (27° 35'.87 S 153° 24'.68 E), is damaged.

Chart temporarily affected - Aus 236

292(T)/2018 AUSTRALIA - QUEENSLAND - Surprise Rock - Light buoy off station
Maritime Safety Queensland Notice 96(T)/2018

The isolated danger light buoy, FI(2)6s (20° 21'.28 S 149° 01'.57 E), is off station.

Chart temporarily affected - Aus 252 - Aus 253 - Aus 824

293(T)/2018 AUSTRALIA - QUEENSLAND - Weipa - Dredging operations
Maritime Safety Queensland

The dredge *Brisbane* and support vessels are conducting dredging operations in the Port of Weipa.

Mariners are advised to navigate with caution in the area.

Chart temporarily affected - Aus 4

294(T)/2018 PAPUA NEW GUINEA - New Britain - Kimbe - Light beacon destroyed
Former Notice - 877(T)/2017 is cancelled
National Maritime Safety Authority PNG

The starboard lateral light beacon, *Fl(3)G.9s 6m 4M No4* (5° 32'.66 S 150° 09'.07 E), has been destroyed.

Chart temporarily affected - Aus 674 - Aus 677

295(T)/2018 AUSTRALIA - NORTHERN TERRITORY - Beagle Gulf - Drill rig moved
Former Notice - 929(T)/2017 is cancelled
MODU *Noble Tom Prosser*

Cancel this notice on receipt.

Chart formerly affected - Aus 309 - Aus 722 - Aus 4721 (INT 721)

296(T)/2018 TIMOR-LESTE - Sahul Banks - Drill rig
MODU *Noble Tom Prosser*

Drill rig *Noble Tom Prosser* is conducting drilling operations in position 11° 04'.41 S 126° 40'.90 E.

Chart temporarily affected - Aus 312

297(T)/2018 AUSTRALIA - WESTERN AUSTRALIA - Bedout Island - Drilling operations northwards
Australian Maritime Safety Authority Auscoast Warning 66/2018

Drill rig *Development Driller 1* is conducting drilling operations in position 18° 43'.00 S 118° 43'.66 E.

Chart temporarily affected - Aus 326 - Aus 4722 (INT 722)

298(T)/2018 AUSTRALIA - WESTERN AUSTRALIA - Bedout Island - Mooring buoys recovered
Former Notice - 218(T)/2018 is cancelled
Quadrant Energy

Cancel this notice on receipt.

Chart formerly affected - Aus 326

299(T)/2018 AUSTRALIA - WESTERN AUSTRALIA - Exmouth Plateau - Drill rig
Woodside Energy Ltd

Drill rig *EnSCO MS-1* is conducting drilling operations in position 19° 15'.67 S 114° 30'.00.

Chart temporarily affected - Aus 328 - Aus 4723 (INT 723)

300(T)/2018 AUSTRALIA - WESTERN AUSTRALIA - Montebello Islands - Subsea operations northwestwards completed

Former Notice - 268(T)/2017 is cancelled
Edda Accommodation

Cancel this notice on receipt.

Chart formerly affected - Aus 328

301(T)/2018 AUSTRALIA - WESTERN AUSTRALIA - Montebello Saddle - Drill rig moved

Former Notice - 934(T)/2017 is cancelled
Woodside Energy Ltd

Cancel this notice on receipt.

Chart formerly affected - Aus 328 - Aus 329 - Aus 4723 (INT 723) - Aus 4725 (INT 725)

302(T)/2018 AUSTRALIA - WESTERN AUSTRALIA - Muiron Islands - Pipeline operations; ship to ship transfer

Former Notice - 168(T)/2018 is cancelled
Department of Transport , Technip FMC Oceania , Maersk Supply Service

Vessel *Global 1201* and support vessels are conducting pipe laying operations in the vicinity of position 21° 25'.75 S 114° 05'.07 E.

Ship to ship transfer operations will be conducted in position 21° 58'.70 S 114° 13.05 E.

All vessels will display appropriate colours and shapes.

Chart temporarily affected - Aus 328 - Aus 329 - Aus 744 - Aus 745

303(T)/2018 AUSTRALIA - WESTERN AUSTRALIA - Rankin Bank - Cable operations

Australian Maritime Safety Authority Auscoast Warning 60/2018

Vessel *DLV 2000* is conducting submarine cable laying operations in an area bounded by the following:

19° 38'.00 S 115° 44'.00 E
19° 45'.00 S 115° 44'.00 E
19° 45'.00 S 115° 56'.00 E
19° 38'.00 S 115° 56'.00 E.

Mariners are advised to navigate with caution in the area. 2.5M clearance requested.

Chart temporarily affected - Aus 327

304(T)/2018 AUSTRALIA - WESTERN AUSTRALIA - Yampi Sound - Comber Rock - Light beacon destroyed

Department of Transport WA Notice 57/2018

The isolated danger light beacon, *Fl(2)5s* (16° 06'.40 S 123° 39'.60 E), has been destroyed.

Chart temporarily affected - Aus 40 - Aus 732 - Aus 733

305(T)/2018 AUSTRALIA - SOUTH AUSTRALIA - Cape Banks - Light range reduced permanently

Former Notice - 172(T)/2018 is cancelled
Australian Maritime Safety Authority

Cancel this notice on receipt.

Chart formerly affected - Aus 348 - Aus 4709 (INT 709) - Aus 4728 (INT 728)

306(T)/2018 AUSTRALIA - VICTORIA - Port Phillip - Mud Islands - Beacon restored

Former Notice - 538(T)/2017 is cancelled

Parks Victoria Notice 118/2018

Cancel this notice on receipt.

Chart formerly affected - Aus 158

307(T)/2018 AUSTRALIA - VICTORIA - Port Phillip - Patterson River - Harbour works

Former Notice - 226(T)/2018 is cancelled

Parks Victoria Notice 123(T), 127(T)/2018

Works are in progress on the Nepean Highway bridge (38° 04'.36 S 145° 07'.32 E).

Exclusion zones exist around the bridge and further upstream at the boat ramp (38° 04'.26 S 145° 07'.59 E).

Mariners are advised to navigate with caution in the area.

Chart temporarily affected - Aus 143

308(T)/2018 AUSTRALIA - TEMPORARY AND PRELIMINARY NOTICES

Former Notice - 46(T)/2018 is cancelled
 Australian Hydrographic Office

<i>Notice</i>	<i>Charts affected</i>	<i>Locality and Subject</i>
		BASS STRAIT
		<i>King Island</i>
89/2018	Aus789	Scientific instrument
434/2014	Aus357 4644	Light unlit
		CORAL SEA
		<i>Bampton Reef</i>
639/2015	Aus4604 AX04604U	Light buoy off station northwards
		<i>Diamond Islets</i>
225/2017	Aus614 4620 4621	Shoaling
		<i>Lihou Reef</i>
530/2017	Aus4604 4621	Light buoy off station northeastwards
		<i>Mellish Reef</i>
118/2018	Aus4604 4634	Light buoy off station northeastwards
		<i>Portlock Reefs</i>
989/2017	Aus377	Reefs
		NEW SOUTH WALES
		<i>Batemans Bay</i>
965/2016	Aus191	Dredging operations
		<i>Ben Buckler</i>
909/2017	Aus197 200 808	Scientific instruments southeastwards
		<i>Cape Byron</i>
709/2016	Aus813	Obstructions eastwards
		<i>Clarence River</i>
43/2015	Aus222	Obstructions
213/2017	Aus222 812 813	Harbour works
		<i>Jervis Bay</i>
515/2017	Aus193	Light unlit
71/2018	Aus193	Beacon destroyed
210/2018	Aus193	Light buoy
286/2018	Aus193	Light buoy
		<i>Kiama</i>
1029/2017	Aus191 489 808 4643	Light range reduced
		<i>NEW ZEALAND - NOUVELLE CALEDONIE - Fiji Islands</i>
831/2017	Aus197 198 489 609 808 4060 4601 4602 4604 4643	Cable operations
		<i>Newcastle</i>
211/2018	Aus207 208 489 809 4643	Light range reduced
287/2018	Aus489 809	Seismic survey
		<i>Port Jackson</i>
461/2016	Aus200 201	Light buoys withdrawn
65/2017	Aus200 202	Harbour works
706/2017	Aus200 202	Scientific instruments
		<i>Port Kembla</i>
400/2016	Aus194	Exclusion zone

308(T)/2018 AUSTRALIA - TEMPORARY AND PRELIMINARY NOTICES

<i>Notice</i>	<i>Charts affected</i>	<i>Locality and Subject</i>
742/2017	Aus191 193 194 195 196 197 198 200 201 202 203 204 207 208 209 215 216 217 219 220 221 222 489 806 807 808 809 810 811 812 813 4060 4601 4602 4643	<i>Tasman Sea</i> Scientific Survey
966/2016	Aus192	<i>Twofold Bay</i> Berth damaged
1035/2016	Aus192	Scientific instruments
559/2017	Aus192	Scientific instruments
NORTHERN TERRITORY		
<i>Darwin</i>		
893/2015	Aus26 28 AX00026T	Scientific instruments
182/2017	Aus25	Light buoy unlit
991/2017	Aus24	Dredging operations
119/2018	Aus24	Lights unlit
256/2018	Aus24 25 26 309 722	Light unlit
257/2018	Aus26 28	Light unlit
<i>East Arm</i>		
894/2015	Aus28	Lights
<i>East Vernon Island</i>		
1193/2014	Aus20	Obstruction
QUEENSLAND		
<i>Abbot Point</i>		
659/2016	Aus255 268 825 826	Scientific instruments
369/2017	Aus255 826	Light beacon destroyed
370/2017	Aus255 826	Nav aids off station; nav aids destroyed; depths unreliable; obstructions
980/2017	Aus255	Mooring buoys
<i>Airlie Beach</i>		
745/2017	Aus269	Wreck
<i>Bowen</i>		
884/2016	Aus268	Light beacon destroyed
968/2016	Aus268	Harbour works
326/2017	Aus268	Light buoy off station
461/2017	Aus268	Obstruction
<i>Boyd Point</i>		
1005/2015	Aus301	Scientific instruments
462/2017	Aus301	Exclusion zone
746/2017	Aus301	Mooring buoys
<i>Boyne River to Gladstone</i>		
159/2018	Aus244 245 246 271	Dredging operations
<i>Breaksea Spit</i>		
25/2018	Aus490 816 817	Foul ground
<i>Bribie Island</i>		
213/2018	Aus236	Shoaling
<i>Brisbane</i>		
747/2017	Aus237 238	Harbour works
26/2018	Aus237	Light beacon destroyed
27/2018	Aus236	Harbour works

308(T)/2018 AUSTRALIA - TEMPORARY AND PRELIMINARY NOTICES

<i>Notice</i>	<i>Charts affected</i>	<i>Locality and Subject</i>
		<i>Brisbane River</i>
1181/2016	Aus238	Harbour works; light beacon withdrawn
1205/2016	Aus237	Harbour works
66/2017	Aus238	Light unlit
176/2017	Aus238	Scientific instrument
519/2017	Aus237	Virtual AIS
561/2017	Aus238	Light buoys
611/2017	Aus238	Harbour works
1088/2017	Aus237	Dredging operations
160/2018	Aus236 237	Light buoy moved
		<i>Bundaberg</i>
605/2016	Aus242	Shoaling
252/2017	Aus242	Nav aids off station
520/2017	Aus242	Harbour works
707/2017	Aus242	Anchoring prohibited
792/2017	Aus242	Exclusion zone
793/2017	Aus242	Dredging operations
		<i>Bunker Group</i>
606/2016	Aus490 818 819	Foul ground westwards
		<i>Burnett River</i>
250/2018	Aus242	Wreck
		<i>Cairns</i>
253/2017	Aus262 263	Shoaling
464/2017	Aus262 263 830	Dredging operations
665/2017	Aus263 264	Dredging operations
1090/2017	Aus263 264	Wreck
251/2018	Aus264	Wreck
		<i>Cape Bowling Green</i>
1214/2013	Aus826 827	Scientific instrument
1034/2017	Aus826 827	Light buoy off station eastwards
		<i>Cape Flattery</i>
708/2017	Aus270	Shoaling
		<i>Cooktown</i>
926/2016	Aus270	Obstruction
		<i>Daydream Island</i>
418/2017	Aus252 253	Lights unlit; light buoys established
		<i>Ellis Channel</i>
834/2017	Aus293 299	Light buoy off station
		<i>First Three Mile Opening</i>
28/2018	Aus281	Light unreliable
		<i>Fitzroy Island</i>
72/2018	Aus830	Light buoys
		<i>Fitzroy River</i>
661/2016	Aus819	Scientific instrument
		<i>Flagstaff Bay</i>
750/2017	Aus826	Light unlit
		<i>Flinders Reef</i>
666/2017	Aus235 236	Light buoy off station
		<i>Gardner Bank</i>
1182/2016	Aus816	Wreck

308(T)/2018 AUSTRALIA - TEMPORARY AND PRELIMINARY NOTICES

<i>Notice</i>	<i>Charts affected</i>	<i>Locality and Subject</i>
579/2014	Aus245 246 819	<i>Gladstone</i> Scientific instruments
568/2016	Aus245 271	Harbour works
68/2017	Aus244 245 271	Harbour works
291/2017	Aus245	Shoaling
521/2017	Aus258	<i>Gladys Inlet</i> Light buoy off station
564/2017	Aus268 825	<i>Gloucester Passage</i> Light buoys off station
252/2018	Aus230	<i>Gold Coast</i> Scientific instruments
110/2018	Aus230	<i>Gold Coast Seaway</i> Shoaling
523/2017	Aus821 824 825	<i>Great Barrier Reef</i> Shoaling
664/2016	Aus241	<i>Great Sandy Strait</i> Scientific instrument
971/2016	Aus241 817	Shoaling
372/2017	Aus241 817	Light buoys
982/2017	Aus240	Light beacon destroyed
1035/2017	Aus240	Beacon destroyed
214/2018	Aus240	Light beacon destroyed
566/2017	Aus254	<i>Hamilton Island</i> Harbour works
401/2016	Aus250	<i>Hay Point</i> Scientific instrument
665/2016	Aus249 250 823	Light unlit
20/2017	Aus250	Obstructions
292/2017	Aus249 823	Obstruction
293/2017	Aus259 267	<i>Hinchinbrook Channel</i> Light buoy unlit; light beacon unlit
215/2018	Aus259	Wreck
1369/2015	Aus828	<i>Hinchinbrook Island</i> Light buoy withdrawn
419/2017	Aus252	<i>Hook Island</i> Light beacon destroyed; light buoy established
1036/2017	Aus240 815 817	<i>Inskip Point</i> Light unlit
67/2016	Aus6	<i>Karumba</i> Shoaling
872/2017	Aus270 280 281 833 834	<i>LADS Passage</i> Shoaling
917/2017	Aus252	<i>Laguna Quays</i> Shoaling; nav aids
743/2015	Aus259 267	<i>Lucinda</i> Light buoy off station; light buoy unlit
375/2017	Aus259 267	Shoaling

308(T)/2018 AUSTRALIA - TEMPORARY AND PRELIMINARY NOTICES

<i>Notice</i>	<i>Charts affected</i>	<i>Locality and Subject</i>
376/2017	Aus249 250 823 824	<i>Mackay</i> Light buoy off station
377/2017	Aus250	Traffic signal station unlit
162/2018	Aus250	Harbour works
290/2018	Aus249 250	Light buoy off station
752/2017	Aus250	<i>Mackay Harbour</i> Harbour works
379/2014	Aus256	<i>Magnetic Island</i> Scientific instrument
919/2017	Aus256	Shoaling
111/2018	Aus236	<i>Manly Boat Harbour</i> Drilling operations
921/2017	Aus235	<i>Mooloolaba</i> Dredging
216/2018	Aus235	Shoaling
740/2014	Aus236	<i>Moreton Bay</i> Wreck
1122/2016	Aus235 236	Light buoy
1207/2016	Aus236	Scientific instrument
111/2017	Aus236	Beacon destroyed
112/2017	Aus236	Wreck
328/2017	Aus236	Light beacon destroyed
421/2017	Aus236	Light beacon destroyed
422/2017	Aus236	Light unlit
423/2017	Aus236	Ship to ship transfer
468/2017	Aus236	Cable laying operations
526/2017	Aus236	Light beacon damaged
569/2017	Aus236	Dredging operations
986/2017	Aus236	Light beacon destroyed
32/2018	Aus236	Dredging operations
74/2018	Aus236	Dredging operations
253/2018	Aus236	Wreck
291/2018	Aus236	Beacon damaged
467/2016	Aus816	<i>North Gardner Bank</i> Wreck
470/2017	Aus816	Foul ground
874/2017	Aus819	<i>One Tree Island</i> Scientific instrument
471/2017	Aus230 814	<i>Palm Beach to Gold Coast</i> Dredging operations
667/2017	Aus367 490 820	<i>Peaked Island</i> Search and rescue exercise northeastwards
528/2017	Aus815	<i>Point Cartwright</i> Obstruction northeastwards
217/2018	Aus813 814	<i>Point Danger</i> Scientific instrument
987/2017	Aus270	<i>Port Douglas</i> Dredging operations
379/2017	Aus252 824	<i>Proserpine River</i> Light beacon unlit

308(T)/2018 AUSTRALIA - TEMPORARY AND PRELIMINARY NOTICES

<i>Notice</i>	<i>Charts affected</i>	<i>Locality and Subject</i>
714/2016 1095/2017	Aus235 236 Aus236	<i>Pumicestone Channel</i> Scientific instruments Marine farm; light buoy
376/2015 164/2018	Aus294 Aus294	<i>Red Island Point</i> Light buoys unlit Wreck
615/2017	Aus829 830	<i>Russell Heads</i> Light withdrawn
254/2018	Aus249 251 823 824	<i>Shoal Point</i> Light buoy off station
114/2018	Aus248 260 261 367 820 822	<i>Shoalwater Bay</i> Live firing
426/2017 570/2017 670/2017 875/2017	Aus269 Aus252 253 269 Aus269 Aus253 269	<i>Shute Harbour</i> Light beacons destroyed Lights; harbour works completed Obstructions Light buoys
75/2018	Aus249 250	<i>Slade Island</i> Light buoy off station
292/2018	Aus252 253 824	<i>Surprise Rock</i> Light buoy off station
833/2016	Aus293 299	<i>Thursday Island</i> Dolphin damaged
469/2016 513/2016 380/2017 427/2017 572/2017 756/2017 838/2017 926/2017 117/2018	Aus257 Aus257 Aus256 827 Aus256 Aus257 Aus256 Aus257 Aus256 827 Aus256	<i>Townsville</i> Harbour works Harbour works Scientific instruments Light beacon destroyed Dredging operations Diving operations Harbour works Light beacon destroyed Light beacon unlit
1274/2013	Aus831 832	<i>Two Islands</i> Wreck
1257/2016 179/2017 840/2017 33/2018 255/2018 293/2018	Aus4 Aus4 Aus4 Aus4 Aus4 301 701 Aus4	<i>Weipa</i> Harbour works Light buoy off station Exclusion zone Light beacon destroyed Scientific instruments Dredging operations
301/2016	Aus252 253 824	<i>Whitsunday Island</i> Wreck
34/2018	Aus252 253 269 824	<i>Whitsunday Passage</i> Wreck
473/2017	Aus240 815 817	<i>Wide Bay</i> Shoaling; navline

308(T)/2018 AUSTRALIA - TEMPORARY AND PRELIMINARY NOTICES

<i>Notice</i>	<i>Charts affected</i>	<i>Locality and Subject</i>
		SOUTH AUSTRALIA
173/2018	Aus127	<i>Cape Jaffa</i> Shoaling
436/2017	Aus485 780	<i>Fleurieu Peninsula</i> Hulk; prohibited area
1000/2016	Aus125	<i>Gleneig</i> Shoaling; dredging operations
123/2018	Aus139 781	<i>Gulf St Vincent</i> Artificial reef
1101/2017	Aus777	<i>Lucky Bay</i> Harbour works
720/2008 1048/2016 1221/2016	Aus137 Aus130 485 781 Aus130 138	<i>Port Adelaide</i> Shoaling Obstruction westwards Light beacon destroyed
620/2016	Aus136	<i>Port Pirie</i> Harbour works
438/2017	Aus132 778	<i>Snapper Point to Douglas Bank</i> Shoaling
585/2017	Aus150 151	<i>Western Port</i> Beacon removed; buoy established
485/2017	Aus135	<i>Whyalla</i> Light beacons destroyed
		TASMAN SEA
109/2018	Aus4601	<i>Tasman Basin</i> Light buoy off station
		TASMANIA
1009/2016	Aus173 795 796	<i>Bruny Island</i> Scientific instruments southeastwards
848/2017 888/2017	Aus173 Aus173	<i>D'Entrecasteaux Channel</i> Marine farm Marine farm works
944/2016 263/2018	Aus164 Aus164	<i>Devonport</i> Light beacon destroyed Shoaling
1010/2016	Aus767 798	<i>Eddystone Point</i> Scientific instruments southeastwards
1011/2016	Aus793	<i>Flying Cloud Point</i> Scientific instruments westwards
576/2012	Aus171 796	<i>Frederick Henry Bay</i> Scientific instruments
36/2017 227/2018	Aus174 Aus173	<i>Huon River</i> Wreck Marine farm works
1002/2017	Aus168	<i>Launceston</i> Harbour works

308(T)/2018 AUSTRALIA - TEMPORARY AND PRELIMINARY NOTICES

<i>Notice</i>	<i>Charts affected</i>	<i>Locality and Subject</i>
264/2018	Aus798 800	<i>Lookout Head</i> Scientific instrument
169/2016	Aus177	<i>Macquarie Harbour</i> Scientific instruments
1194/2016	Aus177	Harbour works
440/2017	Aus177 792	Scientific instruments
587/2017	Aus177 792	Scientific instruments
1053/2017	Aus177 792	Beacon established
228/2018	Aus177	Marine farm works
170/2016	Aus170 766 797	<i>Maria Island</i> Scientific instruments
1103/2014	Aus170 766 797	<i>Mercury Passage</i> Obstructions
372/2016	Aus171 174	<i>North West Bay</i> Mooring area
627/2016	Aus171 796	<i>Pipe Clay Head to Pitt Water</i> Scientific instruments
265/2018	Aus167	<i>Port Dalrymple</i> Light unlit
182/2018	Aus172	<i>Prince of Wales Bay</i> Harbour works
1225/2016	Aus168	<i>River Tamar</i> Scientific instruments
1104/2017	Aus790	<i>Robbins Island</i> Scientific instruments
266/2018	Aus790	Light buoy off station
134/2018	Aus175	<i>Spring Bay</i> Marine farm
183/2018	Aus175	Wreck
539/2017	Aus171 795 796	<i>Storm Bay</i> Scientific instrument
620/2017	Aus24 25 26 27 28 29 309 311 312 315 316 722 4721	TIMOR SEA <i>NORTHERN TERRITORY</i> Pipeline operations
223/2009	Aus312 4721 AX0312F 4721F	<i>Sahul Banks</i> Navaid; racon non operational
358/2016	Aus377 840	TORRES STRAIT <i>Darnley Island</i> Wreck
878/2017	Aus299	<i>Hammond Island</i> Harbour works; dredging
928/2017	Aus299	Light buoy withdrawn
84/2016	Aus839	<i>Kai-Maituine Reef</i> Wreck
410/2016	Aus841 842	<i>Talbot Islands to Deliverance Island</i> Obstructions

308(T)/2018 AUSTRALIA - TEMPORARY AND PRELIMINARY NOTICES

<i>Notice</i>	<i>Charts affected</i>	<i>Locality and Subject</i>
		VICTORIA
		<i>Barwon Heads</i>
586/2017	Aus143	Light buoy off station
		<i>Bass Strait</i>
41/2018	Aus357	Survey operations
		<i>Cape Reamur</i>
1271/2015	Aus349 AX00349S	Exclusion zone; light buoy
		<i>Lakes Entrance</i>
634/2017	Aus182	Dredging operations
261/2018	Aus182	Shoaling
		<i>Ninety Mile Beach</i>
126/2018	Aus357 487	Traffic separation scheme southwestwards
		<i>Port Albert</i>
43/2018	Aus181 182	Shoaling
		<i>Port Phillip</i>
1165/2016	Aus158	Buoy off station
120/2017	Aus154	Light beacon destroyed
130/2018	Aus154	Harbour works
176/2018	Aus143 155	Dredging operations
179/2018	Aus153 157	Light buoys; AIS
225/2018	Aus157	Light beacon destroyed
262/2018	Aus155	Light beacon unlit
307/2018	Aus143	Harbour works
		<i>Port Welshpool</i>
1001/2017	Aus182	Harbour works
		<i>Portland Harbour</i>
180/2018	Aus140	Dredging operations
		<i>Shoal Inlet Entrance</i>
45/2018	Aus181	Light destroyed
		<i>The Narrows</i>
1053/2016	Aus150	Shoaling
		<i>Torquay</i>
1052/2017	Aus143 788	Fish aggregating devices
		<i>Western Port</i>
764/2017	Aus150 151 152	Light beacons unlit
133/2018	Aus150 151	Light buoy unlit
		WESTERN AUSTRALIA
		<i>Ashburton Road</i>
88/2016	Aus64 69 743	Mooring buoys
		<i>Bedout Island</i>
881/2017	Aus325 326 739	Scientific instruments northwestwards
297/2018	Aus326 4722	Drilling operations northwards
		<i>Bluff Point</i>
214/2016	Aus332	Fish aggregating devices
		<i>Broome</i>
992/2017	Aus324 4722	Drill rig northwestwards

308(T)/2018 AUSTRALIA - TEMPORARY AND PRELIMINARY NOTICES

<i>Notice</i>	<i>Charts affected</i>	<i>Locality and Subject</i>
576/2017	Aus319 320	<i>Browse Island</i> Prelude FLNG commissioning
624/2017	Aus319 320	Subsea operations northwestwards
219/2018	Aus319 320 322 4721 4722	Subsea operations
988/2016	Aus73	<i>Carnarvon</i> Obstruction
578/2017	Aus73	Shoaling
258/2018	Aus112 400 608 754 4708 4709 4723 4725	<i>Christmas Island to Perth</i> Cable operations
271/2013	Aus57 741 742	<i>Dampier</i> Obstruction
216/2016	Aus58 59 60	Scientific instruments
777/2016	Aus57 58 60 741 742	Shoaling
305/2017	Aus59	Harbour works
851/2015	Aus57 327 741 742	<i>Dampier Archipelago</i> Obstruction eastwards
1078/2015	Aus318 319 727 728 AX00318S 00319S 00319U	<i>East Holothuria Reef</i> Shoaling
761/2017	Aus110	<i>Emu Point</i> Scientific instrument
220/2018	Aus319	<i>Eugene McDermott Shoal</i> Drilling operations
299/2018	Aus328 4723	<i>Exmouth Plateau</i> Drill rig
939/2016	Aus52 53 54 739 740	<i>Finucane Island to Weerde Island</i> Scientific instruments northwards
940/2016	Aus754 755	<i>Five Fathom Bank</i> Scientific instrument
476/2016	Aus116 335 336 756 757	<i>Flinders Bay</i> Shoaling
339/2017	Aus326 740	<i>Forestier Islands</i> Scientific instrument northwestwards
536/2017	Aus81	<i>Geraldton</i> Marine farm
1043/2016	Aus320 323 730 732	<i>Hall Point to Raft Point</i> Shoaling
221/2018	Aus315 318 728 4721	<i>Holothuria Banks</i> Seismic survey
37/2018	Aus83 332 751	<i>Houtman Abrolhos</i> Shoaling
341/2017	Aus754	<i>Ledge Point</i> Scientific instrument
843/2016	Aus116	<i>Mandurah</i> Harbour works

308(T)/2018 AUSTRALIA - TEMPORARY AND PRELIMINARY NOTICES

<i>Notice</i>	<i>Charts affected</i>	<i>Locality and Subject</i>
522/2016	Aus328	<i>Montebello Islands</i> Light buoy northwestwards
302/2018	Aus328 329 744 745	<i>Muiron Islands</i> Pipeline operations; ship to ship transfer
122/2018	Aus328 329 4723 4725	<i>North West Cape</i> Drill rig northwestwards
935/2017	Aus69	<i>Onslow</i> Scientific instrument
478/2016	Aus754	<i>Perth</i> Scientific instruments westwards
222/2018	Aus331 746 4725	<i>Point Quobba</i> Light altered
1123/2015	Aus54	<i>Port Hedland</i> Light beacons; tug mooring
1393/2015	Aus53 739 740	Scientific instrument
844/2017	Aus52 53	Scientific instruments
937/2017	Aus52 53 54 739 740	Dredging
1092/2016	Aus55 326 740	<i>Port Walcott</i> Tide gauge
480/2016	Aus327	<i>Rankin Bank</i> Scientific instrument
731/2016	Aus327 328	Scientific instruments southwestwards
77/2017	Aus327	Subsea operations northeastwards
630/2017	Aus327	Subsea operations
940/2017	Aus327	Mooring buoys
303/2018	Aus327	Cable operations
631/2017	Aus754	<i>Rottnest Island</i> Scientific instrument
763/2017	Aus324 325 4722	<i>Rowley Shoals</i> Scientific instruments
171/2018	Aus32	<i>Wyndham</i> Shoaling
304/2018	Aus40 732 733	<i>Yampi Sound</i> Light beacon destroyed
INDIAN OCEAN		
454/2015	Aus4070 4071	<i>Sumatera</i> Scientific instruments westwards
PACIFIC OCEAN		
424/2015	Aus4604 4622 AX04604U	Scientific instruments
664/2017	Aus4623	Scientific instruments
PAPUA NEW GUINEA		
35/2018	Aus507 4620 4621	<i>Batumata Point</i> Survey operations southeastwards
979/2016	Aus523 642 643	<i>Huon Gulf</i> Survey operations
298/2017	Aus643	Light buoy off station
531/2017	Aus642 643	<i>Lae</i> Infrastructure; coastline

308(T)/2018 AUSTRALIA - TEMPORARY AND PRELIMINARY NOTICES

<i>Notice</i>	<i>Charts affected</i>	<i>Locality and Subject</i>
299/2017	Aus397 399 684 4060 4604 4622	<i>Madehas Island</i> Light unlit
294/2018	Aus674 677	<i>New Britain</i> Light beacon destroyed
164/2013	Aus628	<i>Nuakata Passage</i> Light beacon destroyed
226/2017	Aus505 621	<i>Padana Nahua Passage to Bootless Inlet</i> Shoaling
144/2016	Aus622	<i>Port Moresby</i> Harbour works; horizontal datum error
264/2017	Aus379 505 621	<i>Vabukori</i> Light unlit
SOLOMON ISLANDS		
135/2018	Aus4623 4634 SLB201 304	<i>Florida Islands</i> Light unlit
91/2018	SLB102 301 302	<i>Ghizo Island</i> Shoaling
677/2017	SLB101	<i>Honiara and Lungga Roads</i> Shoaling
136/2018	SLB104 304	<i>Indispensable Strait</i> Light unlit
678/2017	SLB101 201	<i>Lungga Point</i> Light beacon unlit
679/2017	Aus4604 4623 4634 SLB304 305	<i>Maana'oba Island to Mbita'ama Harbour</i> Lights unlit
680/2017	SLB101	<i>Marau Sound</i> Light beacons unlit
681/2017	Aus4623 SLB107	<i>Ndende Island</i> Light unlit
682/2017	SLB102 301 302	<i>Nega Point</i> Light beacons unlit
184/2018	Aus4604 4623 4634 SLB302	<i>New Georgia Island</i> Lights unlit
683/2017	Aus4623 4634 SLB305	<i>San Christobal Island</i> Light unlit
684/2017	Aus4604 4621 4622 4623 4634 SLB301 302	<i>Vaghoe Point</i> Light unlit
TIMOR-LESTE		
296/2018	Aus312	<i>Sahul Banks</i> Drill rig

II

HYDROGRAPHIC REPORTS

NIL

III

NAVIGATION WARNINGS

The Australian Hydrographic Office will no longer compile Section III of the Australian Notices to Mariners. For the most up to date navigation warnings please refer to:

AMSA Navigation Warnings

<http://amsa.gov.au/search-and-rescue/distress-and-safety-comms/msi/msi-email/index.asp>

New Zealand Notices to Mariners (Navarea XIV warnings)

<http://www.linz.govt.nz/sea/maritime-safety/notices-mariners>

To accompany Australian Notice to Mariners 273/2018

DREDGED AREAS

Depths in dredged areas, although generally maintained, may be less than charted. For the latest information, consult the Harbour Master.

Note for chart Aus 4

To accompany Australian Notice to Mariners 273/2018

DREDGED AREAS

Depths in dredged areas, although generally maintained, may be less than charted. For the latest information, consult the Harbour Master.

Note for chart Aus 255

To accompany Australian Notice to Mariners 273/2018

DREDGED AREAS

Depths in dredged areas, although generally maintained, may be less than charted. For the latest information, consult the Harbour Master.

Note for chart Aus 258

To accompany Australian Notice to Mariners 273/2018

DREDGED AREAS

Depths in dredged areas, although generally maintained, may be less than charted. For the latest information, consult the Harbour Master.

Note for chart Aus 263

To accompany Australian Notice to Mariners 273/2018

DREDGED AREAS

Depths in dredged areas, although generally maintained, may be less than charted. For the latest information, consult the Harbour Master.

Note for chart Aus 6

To accompany Australian Notice to Mariners 273/2018

DREDGED AREAS

Depths in dredged areas, although generally maintained, may be less than charted. For the latest information, consult the Harbour Master.

Note for chart Aus 257

To accompany Australian Notice to Mariners 273/2018

DREDGED AREAS

Depths in dredged areas, although generally maintained, may be less than charted. For the latest information, consult the Harbour Master.

Note for chart Aus 262

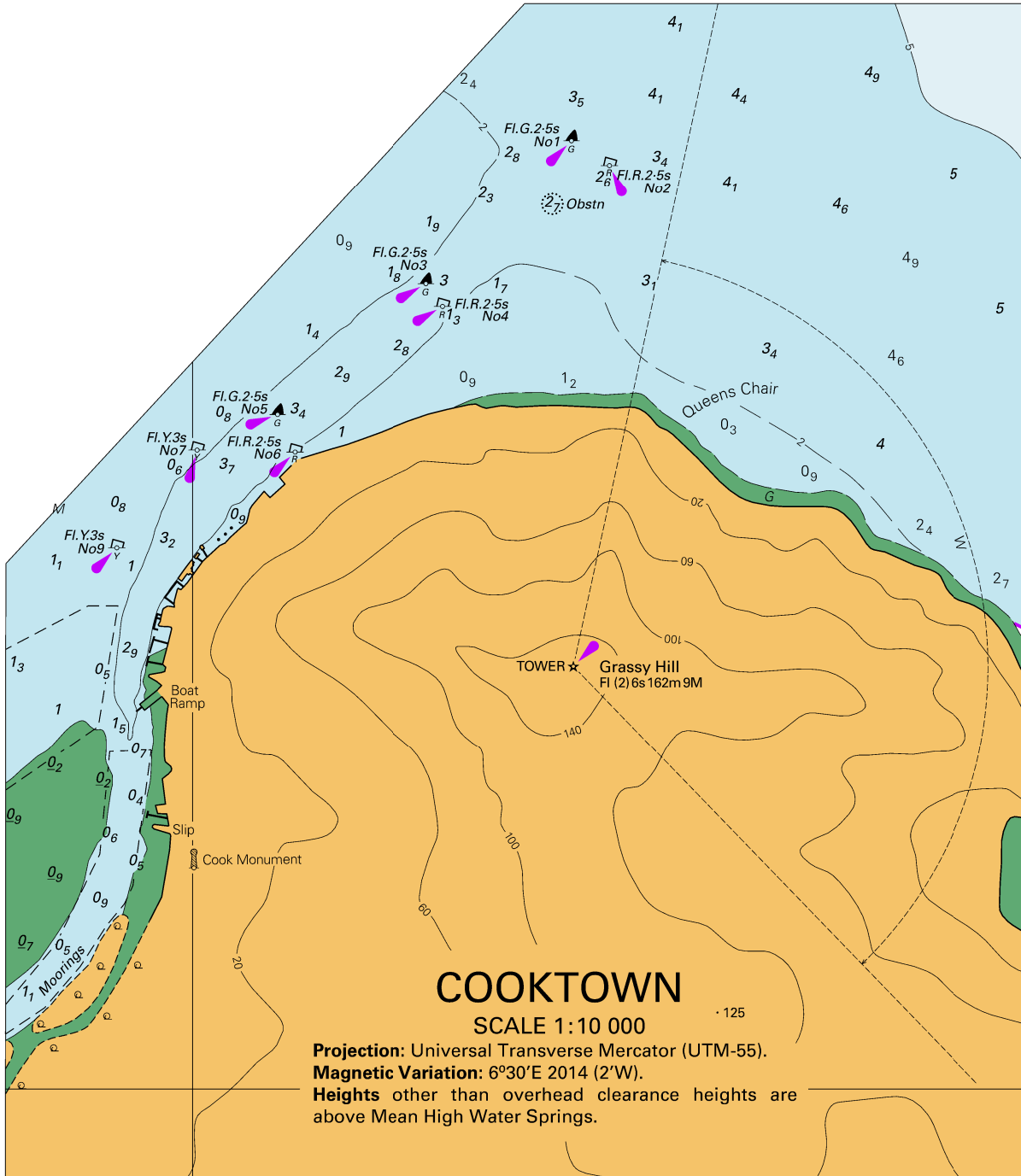
To accompany Australian Notice to Mariners 273/2018

DREDGED AREAS

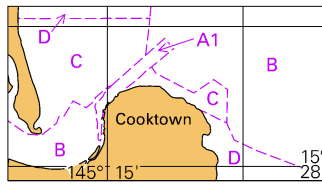
Depths in dredged areas, although generally maintained, may be less than charted. For the latest information, consult the Harbour Master.

Note for chart Aus 264

To accompany Australian Notice to Mariners 268/2018



To accompany Australian Notice to Mariners 268/2018



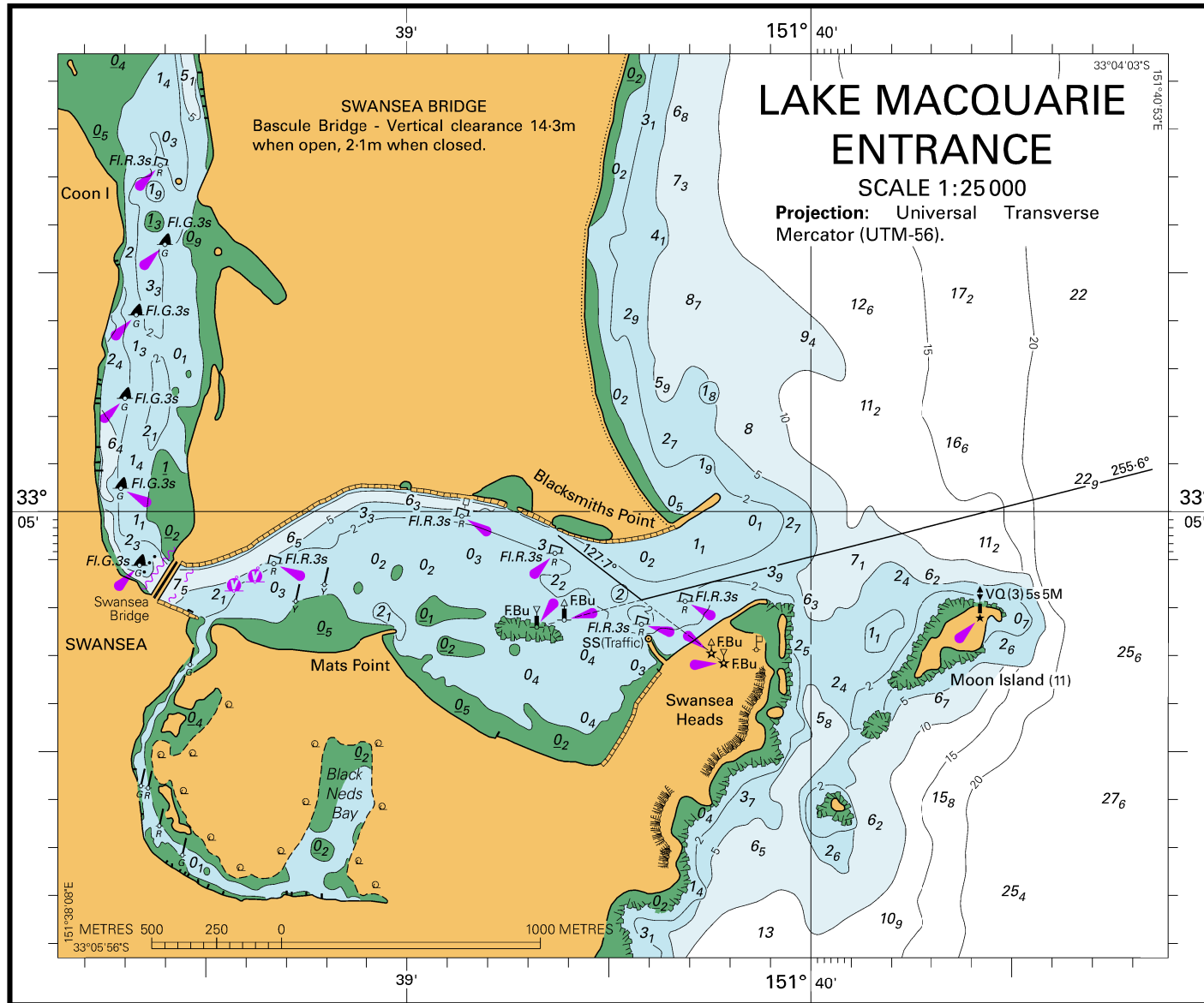
© Commonwealth of Australia 2018

Block B for Chart Aus 270 (42.2 x 23.0mm)

To accompany Australian Notice to Mariners 269/2018

Barrow Island Port, WA (20° 48'S, 115° 29'E)	
UN/LOCODE: AU BWB	
Paper charts:	Aus 62, 66, 67, 327, 742
AusENC cells:	AU5066P0, AU5067P0, AU421115
Security Regulated Port:	Yes
Port Authority:	Department of Transport WA
Website:	www.transport.wa.gov.au/marine
Email:	Port.ops@transport.wa.gov.au
Harbour Master's office:	+61 8 9435 7692
Fax:	+61 8 9435 7807
Deputy Harbour Master:	+61 8 9435 7533
Operator:	Chevron Australia Pty Ltd
Website:	www.chevronaustralia.com/our-businesses/ barrow-island
Email:	barrowislandport@chevron.com
Telephone:	+61 8 9184 3667 +61 8 9184 3666 (24 hours / emergency)
Marine Communications	
Telephone:	+61 8 9184 3666
Email:	bwimco@chevron.com
Pilotage:	Compulsory 35m LOA
Pilot Boarding Ground:	20° 48.68'S, 115° 35.93'E
Communication:	"Port of Barrow"
Call up, emergencies:	VHF Ch 10, 16
Port operations:	VHF Ch 10
Tugs:	VHF Ch 08, 09
Notice of ETA:	96 hours

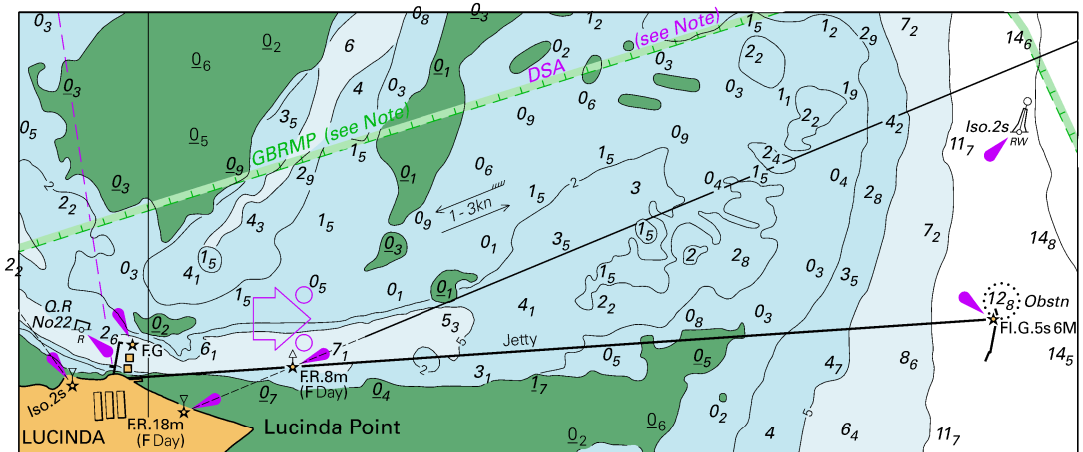
To accompany Australian Notice to Mariners 270/2018



Block for Chart Aus 809

© Commonwealth of Australia 2018

To accompany Australian Notice to Mariners 277/2018

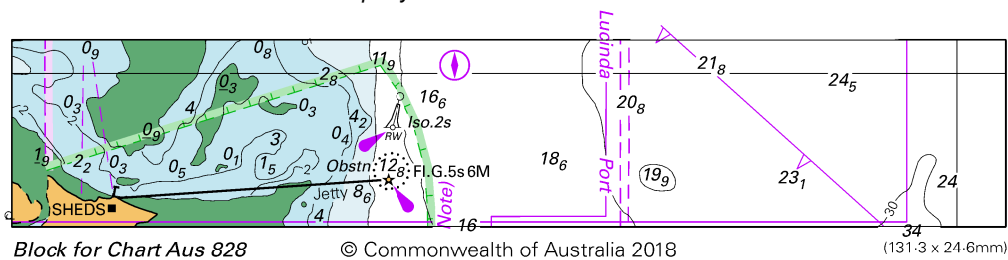


Block for Chart Aus 259

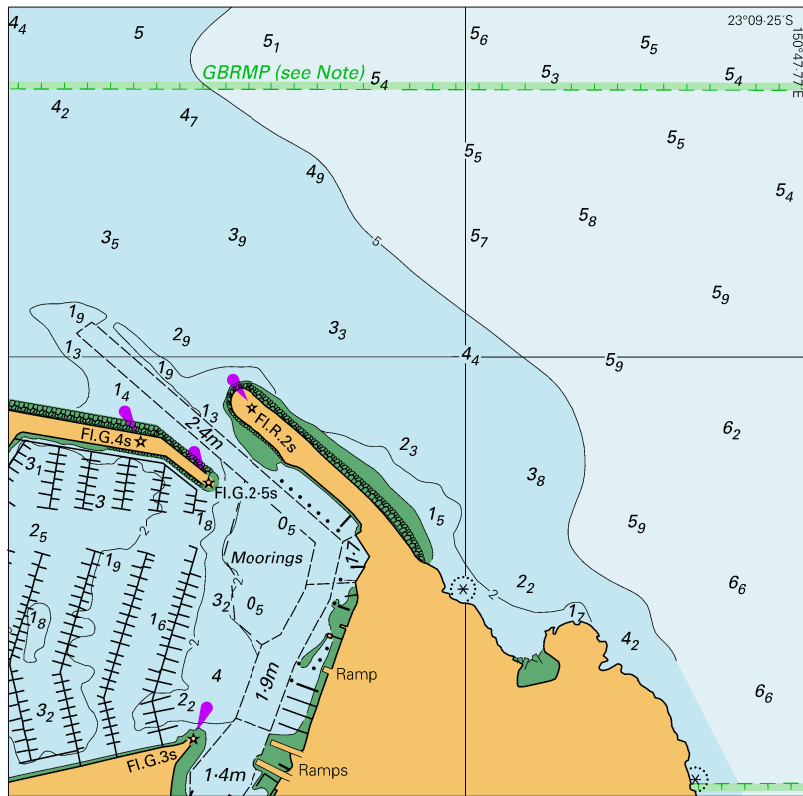
© Commonwealth of Australia 2018

(140.0 x 58.3mm)

To accompany Australian Notice to Mariners 277/2018



To accompany Australian Notice to Mariners 278/2018



© Commonwealth of Australia 2018

Block for Chart Aus 247

(106.0 x 104.3mm)