



AUSTRALIAN NOTICES TO MARINERS

Notices 1107 - 1164



*The Hydrographer and Staff of the Australian Hydrographic Office
wish all users of Australian Navigational Products a Merry Christmas,
a Happy New Year and safe, successful voyages in 2019.*



Published fortnightly by the Australian Hydrographic Office

Australian Notices to Mariners are the authority for correcting charts and publications published by the Australian Hydrographic Office covering Australia, Papua New Guinea, Solomon Islands, Australian Antarctic Territory and Timor-Leste.

Commodore F.T. FREEMAN RAN
Hydrographer of Australia

SECTIONS.

- I. **Australian Notices to Mariners, including blocks and notes.**
- II. **Hydrographic Reports.**
- III. **Navigational Warnings.**

SUPPLEMENTS.

- I. **Tracings**
- II. **Cumulative List of Australian Notices to Mariners.**
- III. **Cumulative List of Temporary and Preliminary Australian Notices to Mariners.**
- IV. **Temporary and Preliminary Notices in force.**
- V. **Amendments to Admiralty List of Lights and Fog Signals (Vol K), Radio Signals (NP 281(2), 282, 283(2), 285, 286(4)) and Sailing Directions (NP 9, 13, 14, 15, 33, 34, 35, 36, 39, 44, 51, 60, 61, 62, 100, 136).**

© Commonwealth of Australia 2018

This work is copyright. Apart from any use permitted under the Copyright Act 1968, no part may be reproduced by any process, adapted, communicated or commercially exploited without prior written permission from The Commonwealth represented by the Australian Hydrographic Office.

IMPORTANT NOTICE

This edition of Notices to Mariners includes all significant information affecting AHO products which the AHO has become aware of since the last edition. All reasonable efforts have been made to ensure the accuracy and completeness of the information, including third party information, on which these updates are based. The AHO regards third parties from which it receives information as reliable, however the AHO cannot verify all such information and errors may therefore exist. The AHO does not accept liability for errors in third party information.

GENERAL INSTRUCTIONS

The substance of these notices should be inserted on the charts affected.

Bearings are referred to the true compass and are reckoned clockwise from North; those relating to lights are given as seen by an observer from seaward.

Positions quoted in notices relate to WGS84 which is the horizontal datum for all charts produced by the Australian Hydrographic Office.

The range quoted for a light is its nominal range.

Depths are with reference to the chart datum of each chart. Heights are above mean high water springs or mean higher high water, as appropriate.

The capital letter (P) or (T) after the number of any notice denotes a preliminary or temporary notice respectively, which are contained separately at the end of the permanent notices.

REPORTING OF DANGERS

Mariners are particularly requested to notify the AUSTRALIAN HYDROGRAPHIC OFFICE, Locked Bag 8801 Wollongong, NSW 2500 (Fax 02-4223 6599, e-mail datacentre@hydro.gov.au or, alternatively by filling in and submitting the [Hydrographic Notes](#) forms located on the web site – www.hydro.gov.au), immediately on the discovery of new dangers or suspected dangers to navigation. For changes or defects in aids to navigation notify AusSAR (Fax 02-6230 6868 or email rccaus@amsa.gov.au).

AUTHORISED USE

Copies of Australian notices are available free of charge from the Australian Hydrographic Office (AHO) website (www.hydro.gov.au) and through the eNotices (email) service (www.hydro.gov.au/enotices/enotices.htm).

Individual Notices may be copied for the purpose of inserting Notice substance on official charts and publications. Paper copies may be printed by chart agents and distributed to customers on a cost recovery basis. Participating chart agents are listed on the AHO website as providing a 'Paper Notices to Mariners' service (www.hydro.gov.au/webapps/jsp/agents/agents-list.jsp). Copies of the notices may not be sold for profit without prior written agreement.

NUMERICAL INDEX OF NOTICES TO MARINERS

Edition No 25

Notices	Aus Chart, INT Chart, ENC Cell, AHP, BA Pubs
1107	Aus 81, 202
1108	Supplement to AHP 20 - Mariners Guide to Accuracy of Depth Information in ENC
1109	Aus 808
1110	Aus 200, 201
1111	Aus 220
1112	Aus 255, 268, 825, 826
1113	Aus 262, 830
1114	Aus 270
1115	Aus 490, 819
1116	Aus 246, 819
1117	Aus 235
1118	Aus 236
1119	Aus 236, 814
1120	Aus 270
1121	Aus 251
1122	Aus 256, 827
1123	Aus 16, 717
1124	Aus 24, 26, 722
1125	Aus 312, 313, 902
1126	Aus 313, 902
1127	Aus 73, 331, 746, 4708, 4725, INT 708, 725
1128	Aus 119, 335, 336, 756, 757, 758, 762, 763, 4726, 4727, INT 726, 727
1129	Aus 332, 751, 4708, 4725, INT 708, 725
1130	Aus 759
1131	Aus 69
1132	Aus 920
1133	Aus 154
1134	Aus 4728, INT 728
1135	Aus 151
1136	Aus 164, 799
1137	Aus 172
1138	SLB 101, 201
1139	SLB 301
1140(T)	Aus 237, 238
1141(T)	Aus 240
1142(T)	Aus 259, 267
1143(T)	Aus 250
1144(T)	Aus 236
1145(T)	Aus 236
1146(T)	Aus 252, 253
1147(T)	Aus 252, 253, 254
1148(T)	Aus 399, 683, SLB 301
1149(T)	Aus 391, 4603, 4604, 4622, INT 603, 604, 622
1150(T)	Aus 519, 520, 4620, 4621, INT 620, 621
1151(T)	Aus 389, 4622, INT 622
1152(T)	Aus 715
1153(T)	Aus 314, 4721, 4722, INT 721, 722
1154(T)	Aus 64, 69
1155(T)	Aus 115
1156(T)	Aus 744
1157(P)	Aus 336, 758
1158(P)	Aus 32
1159(T)	Aus 357
1160(T)	Aus 357
1161(T)	Aus 357, 487
1162(T)	Aus 158
1163(T)	Aus 157
1164(T)	Aus 150, 151

NUMERICAL INDEX OF CHARTS AFFECTED

Edition No 25

Aus Chart	Notices
Aus 16	1123
Aus 24	1124
Aus 26	1124
Aus 32	1158(P)
Aus 64	1154(T)
Aus 69	1131, 1154(T)
Aus 73	1127
Aus 81	1107
Aus 115	1155(T)
Aus 119	1128
Aus 150	1164(T)
Aus 151	1135, 1164(T)
Aus 154	1133
Aus 157	1163(T)
Aus 158	1162(T)
Aus 164	1136
Aus 172	1137
Aus 200	1110
Aus 201	1110
Aus 202	1107
Aus 220	1111
Aus 235	1117
Aus 236	1118, 1119, 1144(T), 1145(T)
Aus 237	1140(T)
Aus 238	1140(T)
Aus 240	1141(T)
Aus 246	1116
Aus 250	1143(T)
Aus 251	1121
Aus 252	1146(T), 1147(T)
Aus 253	1146(T), 1147(T)
Aus 254	1147(T)
Aus 255	1112
Aus 256	1122
Aus 259	1142(T)
Aus 262	1113
Aus 267	1142(T)
Aus 268	1112
Aus 270	1114, 1120
Aus 312	1125
Aus 313	1125, 1126
Aus 314	1153(T)
Aus 331	1127
Aus 332	1129
Aus 335	1128
Aus 336	1128, 1157(P)
Aus 357	1159(T), 1160(T), 1161(T)
Aus 389	1151(T)
Aus 391	1149(T)
Aus 399	1148(T)
Aus 487	1161(T)
Aus 490	1115
Aus 519	1150(T)
Aus 520	1150(T)

Aus Chart	Notices
Aus 683	1148(T)
Aus 715	1152(T)
Aus 717	1123
Aus 722	1124
Aus 744	1156(T)
Aus 746	1127
Aus 751	1129
Aus 756	1128
Aus 757	1128
Aus 758	1128, 1157(P)
Aus 759	1130
Aus 762	1128
Aus 763	1128
Aus 799	1136
Aus 808	1109
Aus 814	1119
Aus 819	1115, 1116
Aus 825	1112
Aus 826	1112
Aus 827	1122
Aus 830	1113
Aus 902	1125, 1126
Aus 920	1132
Aus 4603	1149(T)
Aus 4604	1149(T)
Aus 4620	1150(T)
Aus 4621	1150(T)
Aus 4622	1149(T), 1151(T)
Aus 4708	1127, 1129
Aus 4721	1153(T)
Aus 4722	1153(T)
Aus 4725	1127, 1129
Aus 4726	1128
Aus 4727	1128
Aus 4728	1134
SLB 101	1138
SLB 201	1138
SLB 301	1139, 1148(T)

INT Chart	Notices
INT 603	1149(T)
INT 604	1149(T)
INT 620	1150(T)
INT 621	1150(T)
INT 622	1149(T), 1151(T)
INT 708	1127, 1129
INT 721	1153(T)
INT 722	1153(T)
INT 725	1127, 1129
INT 726	1128

INT Chart	Notices
INT 727	1128
INT 728	1134

1107 AUSTRALIA - Products - New Charts, New Editions, Withdrawn Charts
Australian Hydrographic Service

New Charts

<i>Chart</i>	<i>Title and Geographical limits</i>	<i>Scale</i>	<i>Publication Date</i>	<i>Remarks</i>
NIL				

New Electronic Navigation Chart (Aus ENC)

<i>Cell Name</i>	<i>Title</i>	<i>Publication Date</i>	<i>Remarks</i>
NIL			

New Editions and Withdrawn Charts

<i>Chart</i>	<i>Title</i>	<i>Scale</i>	<i>Publication Date</i>	<i>Remarks</i>
AUS 81 Edition 5	Australia - West Coast - Western Australia - Approaches to Geraldton Plan: Geraldton	1:25 000 1:7 500	14 December 2018	New edition with general updating throughout; including latest bathymetric data, nav aids and infrastructure. Chart Aus 81 Edition 4 dated 4 November 2016 is now superseded and must be withdrawn from use.
AUS 202 Edition 3	Australia - East Coast - New South Wales - Port Jackson (Central Sheet) Sydney Harbour	1:7 500	14 December 2018	New edition with general updating throughout; including latest bathymetric data and infrastructure. Chart Aus 202 Edition 2 dated 6 July 2001 is now superseded and must be withdrawn from use.

Chart permanently withdrawn

Charts listed above as withdrawn no longer meet chart carriage requirements and should be marked as "superseded" and replaced with the new chart/ new edition listed prior to passage through the area covered by the new chart.

When placing orders with a chart agent between notice of forthcoming edition and its publication, mariners should advise whether their order pertains to the current edition or the new edition.

For further details refer to the AHS website at www.hydro.gov.au for new edition and new chart stock arrival information.

1108 AUSTRALIA - Product - Supplement to AHP 20 - Mariners Guide to Accuracy of Depth Information in ENC

Australian Hydrographic Office

The Australian Hydrographic Office has published a Supplement to AHP20 "Mariners Guide to Accuracy of Depth Information in ENC" in response to incidents in both Australian waters and overseas. The Supplement is intended to improve mariners' understanding of the international Zones of Confidence system used in ENC, and the impact of each different category upon the planning and conduct of a voyage. It provides additional advice on safe depths and distances to be maintained from hazardous charted features, isolated dangers, and the misleading effects of use of over-scale display settings.

The Supplement may be downloaded in PDF format from the AHS website at the following link:

http://www.hydro.gov.au/prodserv/publications/AHP20_CH13_Supplement.pdf

1109 AUSTRALIA - NEW SOUTH WALES - Bass Point - Historic wreck

Australian Hydrographic Office

Aus 808 [898/2018]Insert magenta legend, *Historic Wk (see Note)*

34° 35'.60 S

150° 54'.23 E

Aus 808 (Bass Point) [898/2018]Insert magenta legend, *Historic Wk (see Note)*

34° 35'.597 S

150° 54'.231 E

1110 AUSTRALIA - NEW SOUTH WALES - Port Jackson - Middle Harbour - Infrastructure

NSW Roads and Maritime Services , Clontarf Marina

Aus 200 [900/2018]

Insert accompanying block

33° 48'.3 S

151° 14'.5 E

Aus 201 [853/2018]

Insert accompanying block

33° 48'.3 S

151° 14'.9 E

1111 AUSTRALIA - NEW SOUTH WALES - Richmond River - Light beacon

Australian Hydrographic Office

Aus 220 (Richmond River Entrance) [1062/2018]Move light beacon
to

28° 52'.48 S

153° 34'.74 E

28° 52'.481 S

153° 34'.791 E

1112 AUSTRALIA - QUEENSLAND - Abbot Point - VTS

Australian Maritime Safety Authority

Aus 255 [1009/2018]

Delete chart note 19° 45'.93 S 148° 08'.90 E

Aus 268 [665/2018]

Insert magenta legend, *Abbot Point VTS*, centred on
magenta dashed line between 19° 55'.00 S 148° 17'.60 E
19° 52'.802 S 148° 17'.700 E
20° 02'.000 S 148° 17'.700 E
20° 02'.000 S 148° 17'.623 E
magenta dashed line between 20° 02'.000 S 148° 16'.720 E
20° 02'.000 S 148° 13'.900 E
accompanying note 20° 04'.8 S 148° 14'.2 E
magenta legend, *REEFVTS (see SRS Note)*, centred on 19° 55'.44 S 148° 17'.76 E

Aus 268 (Bowen) [665/2018]

Insert magenta dashed line between 20° 02'.000 S 148° 14'.900 E
20° 02'.000 S 148° 16'.100 E
magenta legend, *Abbot Point VTS*, centred on 20° 01'.98 S 148° 15'.67 E
magenta legend, *REEFVTS (see SRS Note)*, centred on 20° 02'.01 S 148° 15'.61 E

Aus 825 [951/2018]

Insert magenta legend, *Abbot Point VTS*, centred on
magenta dashed line between 19° 53'.50 S 148° 17'.50 E
19° 44'.26 S 148° 12'.00 E
19° 48'.00 S 148° 17'.70 E
magenta dashed line between 20° 02'.00 S 148° 17'.70 E
20° 02'.00 S 148° 16'.72 E
magenta legend, *REEFVTS (see SRS Note)*, centred on 20° 02'.00 S 148° 13'.93 E
19° 54'.65 S 148° 17'.76 E

Aus 826 [951/2018]

Insert magenta dashed line between 19° 47'.91 S 147° 59'.06 E
19° 40'.00 S 147° 59'.06 E
19° 40'.00 S 148° 05'.50 E
19° 48'.00 S 148° 17'.70 E
magenta dashed line between 20° 02'.00 S 148° 17'.70 E
20° 02'.00 S 148° 17'.63 E
20° 02'.00 S 148° 16'.72 E
magenta legend, *Abbot Point VTS*, centred on 20° 02'.00 S 148° 13'.96 E
magenta legend, *REEFVTS (see SRS Note)*, centred on 19° 44'.20 S 148° 11'.80 E
19° 43'.92 S 148° 11'.81 E

1113 AUSTRALIA - QUEENSLAND - Cairns - VTS

Australian Hydrographic Office

Aus 262 [1009/2018]

Insert magenta dashed line between 16° 46'.301 S 145° 51'.207 E
16° 47'.045 S 145° 53'.874 E
16° 48'.734 S 145° 54'.696 E
16° 49'.874 S 145° 54'.954 E
16° 49'.865 S 145° 54'.954 E
magenta legend, *REEFVTS (see SRS Note)*, centred on 16° 51'.046 S 145° 54'.992 E
magenta legend, *Cairns VTS*, centred on 16° 46'.668 S 145° 52'.428 E
magenta legend, *REEFVTS (see SRS Note)*, centred on 16° 46'.597 S 145° 52'.431 E

Amend magenta legend to *Cairns Pilotage/VTS Limit*, centred on 16° 51'.05 S 145° 54'.93 E**Aus 830 [951/2018]**

Insert magenta dashed line between 16° 46'.52 S 145° 41'.69 E
16° 45'.89 S 145° 44'.65 E
16° 46'.10 S 145° 50'.49 E
16° 47'.04 S 145° 53'.87 E
16° 48'.73 S 145° 54'.70 E
16° 49'.88 S 145° 54'.95 E
magenta legend, *REEFVTS (see SRS Note)*, centred on 16° 46'.67 S 145° 52'.83 E
magenta legend, *Cairns VTS*, centred on 16° 46'.77 S 145° 52'.55 E

1114 AUSTRALIA - QUEENSLAND - Cooktown - Depths

Australian Hydrographic Office

Aus 270 (Cooktown) [1009/2018]

Insert accompanying block 15° 27'.8 S 145° 14'.6 E

1115 AUSTRALIA - QUEENSLAND - Curtis Island - Wreck eastwardsHMAS *Melville***Aus 490 [908/2018]**Replace depth, 21₇m, with depth, 21₉m 23° 40'.9 S 151° 25'.9 E**Aus 819 [951/2018]**Replace depth, 21₇m, with depth, 21₉m 23° 40'.9 S 151° 25'.9 E**1116 AUSTRALIA - QUEENSLAND - Gladstone - VTS**

Australian Maritime Safety Authority

Aus 246 [236/2018]

Insert	magenta dashed line between	23° 47'.730 S	151° 35'.250 E
		23° 51'.305 S	151° 40'.807 E
	magenta dashed line between	23° 55'.243 S	151° 40'.806 E
		23° 59'.463 S	151° 26'.554 E
	magenta dashed line between	23° 59'.515 S	151° 26'.303 E
		23° 59'.478 S	151° 25'.750 E
	magenta legend, <i>Gladstone VTS</i> , centred on	23° 55'.824 S	151° 38'.632 E
	magenta legend, <i>Gladstone VTS</i> , centred on	23° 48'.640 S	151° 36'.494 E
	accompanying note	23° 56'.664 S	151° 18'.680 E
	magenta legend, <i>REEFVTS (see SRS Note)</i> , centred on	23° 55'.900 S	151° 38'.700 E
	magenta legend, <i>REEFVTS (see SRS Note)</i> , centred on	23° 48'.560 S	151° 36'.600 E

Aus 819 [1115/2018]

Insert	magenta dashed line between	23° 42'.91 S	151° 17'.69 E
		23° 45'.00 S	151° 31'.00 E
		23° 54'.00 S	151° 45'.00 E
		23° 59'.46 S	151° 26'.55 E
	magenta dashed line between	23° 59'.52 S	151° 26'.30 E
		23° 59'.48 S	151° 25'.75 E
	magenta legend, <i>Gladstone VTS</i> , centred on	23° 48'.51 S	151° 36'.15 E
	magenta legend, <i>REEFVTS (see SRS Note)</i> , centred on	23° 48'.28 S	151° 36'.53 E

1117 AUSTRALIA - QUEENSLAND - Moreton Bay - North Banks - Light buoy

Maritime Safety Queensland Notice 485/2018

Aus 235 [612/2018]

Move	light buoy	26° 53'.90 S	153° 16'.73 E
	to	26° 54'.03 S	153° 16'.93 E

1118 AUSTRALIA - QUEENSLAND - Moreton Bay - Main Channel - North Spit - Light beacon moved*Former Notice - 636(T)/2018 is cancelled*

Maritime Safety Queensland

Aus 236 [856/2018]

Move	light beacon	27° 05'.61 S	153° 18'.41 E
	to	27° 05'.64 S	153° 18'.60 E

1119 AUSTRALIA - QUEENSLAND - North Stradbroke Island - Rocky Point - Fish haven

Former Notice - 976(T)/2018 is cancelled
Maritime Safety Queensland Notice 477/2018

Aus 236 [1118/2018]

Insert	fish haven symbol with minimum depth, 5m	27° 24'.60 S	153° 30'.42 E
--------	--	--------------	---------------

Aus 814 [853/2018]

Insert	fish haven symbol with minimum depth, 5m	27° 24'.60 S	153° 30'.42 E
--------	--	--------------	---------------

Delete	depth, 11m	27° 24'.5 S	153° 30'.5 E
--------	------------	-------------	--------------

1120 AUSTRALIA - QUEENSLAND - Port Douglas - Light buoys

Maritime Safety Queensland

Aus 270 (Port Douglas) [1114/2018]

Move	light buoy	16° 28'.718 S	145° 27'.618 E
	to	16° 28'.692 S	145° 27'.637 E
	light buoy	16° 28'.735 S	145° 27'.657 E
	to	16° 28'.707 S	145° 27'.663 E

1121 AUSTRALIA - QUEENSLAND - St Bees Island - Historic wreck

Australian Hydrographic Office

Aus 251 [554/2018]

Insert	magenta legend, <i>Historic Wk (see Note)</i>	20° 54'.20 S	149° 26'.90 E
--------	---	--------------	---------------

1122 AUSTRALIA - QUEENSLAND - Townsville - VTS

Australian Maritime Safety Authority

Aus 256 [1064/2018]

Insert	magenta dashed line between	19° 04'.91 S	146° 45'.07 E
		19° 02'.50 S	146° 54'.00 E
		19° 02'.50 S	147° 00'.80 E
		19° 10'.91 S	147° 00'.80 E
	magenta legend, <i>Townsville VTS</i> , centred on	19° 03'.90 S	146° 49'.18 E
	magenta legend, <i>Townsville VTS</i> , centred on	19° 08'.65 S	147° 00'.74 E
	magenta legend, <i>REEFVTS (see SRS Note)</i> , centred on	19° 08'.71 S	147° 00'.86 E
	magenta legend, <i>REEFVTS (see SRS Note)</i> , centred on	19° 03'.77 S	146° 49'.13 E

Aus 827 [951/2018]

Insert	magenta dashed line between	19° 04'.91 S	146° 45'.07 E
		19° 02'.50 S	146° 54'.00 E
		19° 02'.50 S	147° 00'.80 E
		19° 10'.91 S	147° 00'.80 E
	magenta legend, <i>Townsville VTS</i> , centred on	19° 03'.90 S	146° 49'.18 E
	magenta legend, <i>Townsville VTS</i> , centred on	19° 08'.65 S	147° 00'.74 E
	magenta legend, <i>REEFVTS (see SRS Note)</i> , centred on	19° 08'.71 S	147° 00'.86 E
	magenta legend, <i>REEFVTS (see SRS Note)</i> , centred on	19° 03'.77 S	146° 49'.13 E

1123 AUSTRALIA - NORTHERN TERRITORY - Milingimbi Island - Milingimbi - Historic wreck

Australian Hydrographic Office

Aus 16 [261/2006]

Insert	magenta legend, <i>Historic Wk (see Note)</i>	12° 06'.29 S	134° 55'.53 E
	accompanying note	12° 08'.5 S	134° 46'.0 E

Aus 16 (Milingimbi Inlet) [261/2006]

Insert	magenta legend, <i>Historic Wk (see Note)</i>	12° 06'.292 S	134° 55'.533 E
--------	---	---------------	----------------

Aus 717 [1017/2018]

Delete	wreck	12° 06'.3 S	134° 55'.6 E
--------	-------	-------------	--------------

1124 AUSTRALIA - NORTHERN TERRITORY - Port Darwin - Middle Arm - Historic wrecks

Australian Hydrographic Office

Aus 24 [440/2018]

Insert	magenta legend, <i>Historic Wk (see Note)</i>	12° 29'.819 S	130° 49'.162 E
	magenta legend, <i>Historic Wk (see Note)</i>	12° 29'.274 S	130° 49'.110 E

Delete	legend, Wk	12° 29'.82 S	130° 49'.18 E
	legend, Wk	12° 29'.27 S	130° 49'.13 E

Aus 26 [440/2018]

Insert	magenta legend, <i>Historic Wk (see Note)</i>	12° 29'.819 S	130° 49'.162 E
	magenta legend, <i>Historic Wk (see Note)</i>	12° 29'.274 S	130° 49'.110 E

Delete	legend, Wk	12° 29'.26 S	130° 49'.20 E
	legend, Wk	12° 29'.82 S	130° 49'.25 E

Aus 722 [1075/2018]

Insert	magenta legend, <i>Historic Wks (see Note)</i>	12° 29'.53 S	130° 49'.63 E
--------	--	--------------	---------------

Delete	legend, Wk	12° 29'.3 S	130° 49'.6 E
	legend, Wk	12° 29'.8 S	130° 49'.6 E

1125 TIMOR-LESTE - Hera - Mooring buoys; depthHMAS *Melville***Aus 312 [NE 9/2/2018]**

Insert	depth, 7 ₇ m, and extend contour SW to enclose	8° 30'.79 S	125° 40'.89 E
--------	---	-------------	---------------

Delete	depth, 10m	8° 30'.3 S	125° 41'.2 E
--------	------------	------------	--------------

Aus 313 [NE 9/2/2018]

Insert	depth, 7 ₇ m, and extend contour SW to enclose	8° 30'.79 S	125° 40'.89 E
--------	---	-------------	---------------

Delete	depth, 10m	8° 30'.3 S	125° 41'.2 E
--------	------------	------------	--------------

Aus 902 (Approaches to Hera) [NE 30/6/2017]

Insert	yellow cylindrical mooring buoy	8° 31'.728 S	125° 41'.368 E
	yellow cylindrical mooring buoy	8° 31'.788 S	125° 41'.343 E
	yellow cylindrical mooring buoy	8° 31'.878 S	125° 41'.299 E
	yellow cylindrical mooring buoy	8° 31'.909 S	125° 41'.163 E
	yellow cylindrical mooring buoy	8° 31'.728 S	125° 41'.093 E

Delete	mooring buoy	8° 31'.76 S	125° 41'.28 E
	mooring buoy	8° 31'.78 S	125° 41'.35 E
	depth, 26 ₉ m	8° 31'.88 S	125° 41'.30 E
	mooring buoy	8° 31'.92 S	125° 41'.32 E
	mooring buoy	8° 31'.90 S	125° 41'.22 E

1126 TIMOR-LESTE - Kun - Bearing

Australian Hydrographic Office

Aus 313 [1125/2018]

Amend	legend to 218°	8° 18'.6 S	127° 06'.1 E
-------	----------------	------------	--------------

Aus 902 (Approaches to Kun) [1125/2018]

Amend	legend to 218°	8° 21'.23 S	127° 04'.30 E
-------	----------------	-------------	---------------

1127 AUSTRALIA - WESTERN AUSTRALIA - Cape Cuvier - Nav aids

Rio Tinto

Aus 73 (Cape Cuvier) [815/2018]

Insert	orange spherical mooring buoy	24° 13'.295 S	113° 23'.874 E
	yellow superbuoy, No6	24° 13'.259 S	113° 23'.964 E
	orange spherical mooring buoy	24° 13'.283 S	113° 24'.275 E
	cylindrical mooring buoy	24° 13'.193 S	113° 24'.182 E
	yellow superbuoy, No5	24° 13'.183 S	113° 24'.064 E
	yellow superbuoy, No4	24° 13'.096 S	113° 23'.966 E
	yellow superbuoy, No3	24° 13'.087 S	113° 23'.745 E
	yellow superbuoy, No2	24° 13'.180 S	113° 23'.638 E
	yellow superbuoy, No1	24° 13'.242 S	113° 23'.748 E
	orange spherical mooring buoy	24° 13'.296 S	113° 23'.633 E
	orange spherical mooring buoy	24° 13'.385 S	113° 23'.672 E
	special spherical buoy, without topmark	24° 13'.208 S	113° 23'.563 E

Amend	light to <i>Fl.R.5s</i>	24° 13'.21 S	113° 23'.85 E
-------	-------------------------	--------------	---------------

Delete	depth, 12 ₆ m	24° 13'.29 S	113° 23'.87 E
	mooring buoy	24° 13'.38 S	113° 23'.88 E
	mooring buoy	24° 13'.34 S	113° 23'.92 E
	mooring buoy	24° 13'.28 S	113° 23'.95 E
	mooring buoy	24° 13'.18 S	113° 24'.06 E
	mooring buoy	24° 13'.10 S	113° 23'.97 E
	mooring buoy	24° 13'.08 S	113° 23'.74 E
	mooring buoy	24° 13'.18 S	113° 23'.65 E
	mooring buoy	24° 13'.26 S	113° 23'.76 E

Aus 331 [617/2018]

Amend	light to <i>Fl.R.5s</i>	24° 13'.2 S	113° 23'.8 E
-------	-------------------------	-------------	--------------

Aus 746 [1070/2016]

Amend	light to <i>Fl.R.5s</i>	24° 13'.2 S	113° 23'.8 E
-------	-------------------------	-------------	--------------

Aus 4708 (INT 708) [NE 13/7/2018]

Delete	light	24° 13'.2 S	113° 23'.8 E
--------	-------	-------------	--------------

Aus 4725 (INT 725) [1021/2018]

Delete	light	24° 13'.2 S	113° 23'.8 E
--------	-------	-------------	--------------

1128 AUSTRALIA - WESTERN AUSTRALIA - Cape Leeuwin to Point Malcom - Depths

LADS Flight

Aus 119 [915/2018]

Insert	depth, 7 ₃ m, enclosed by contour	34° 02'.95 S	122° 06'.59 E
--------	--	--------------	---------------

Delete	depth, 29m	34° 02'.9 S	122° 06'.4 E
--------	------------	-------------	--------------

Aus 119 (Approaches to Goose Island Bay) [915/2018]

Insert	depth, 2 ₄ m, enclosed by contour	34° 01'.05 S	123° 10'.34 E
--------	--	--------------	---------------

	depth, 6 ₇ m, enclosed by contour	34° 00'.90 S	123° 11'.07 E
--	--	--------------	---------------

	depth, 14 ₁ m, enclosed by contour	34° 01'.18 S	123° 12'.11 E
--	---	--------------	---------------

	depth, 11 ₇ m, enclosed by contour	34° 01'.11 S	123° 12'.71 E
--	---	--------------	---------------

	depth, 2 ₄ m, enclosed by contour	33° 59'.99 S	123° 13'.32 E
--	--	--------------	---------------

Aus 335 [960/2018]

Insert	depth, 14 ₇ m, enclosed by contour	34° 20'.19 S	115° 19'.22 E
--------	---	--------------	---------------

	depth, 7 ₇ m, enclosed by contour	34° 20'.15 S	115° 21'.45 E
--	--	--------------	---------------

	depth, 19 ₉ m, enclosed by contour	34° 47'.21 S	115° 56'.65 E
--	---	--------------	---------------

Aus 336 [1022/2018]

Insert	depth, 14 ₇ m, enclosed by contour	34° 20'.19 S	115° 19'.22 E
--------	---	--------------	---------------

	depth, 7 ₇ m, enclosed by contour	34° 20'.15 S	115° 21'.45 E
--	--	--------------	---------------

	depth, 19 ₉ m, enclosed by contour	34° 47'.21 S	115° 56'.65 E
--	---	--------------	---------------

	depth, 18 ₂ m, enclosed by contour	34° 55'.80 S	116° 07'.72 E
--	---	--------------	---------------

	depth, 18 ₃ m, enclosed by contour	34° 57'.42 S	116° 07'.57 E
--	---	--------------	---------------

Aus 756 [960/2018]

Insert	depth, 14 ₇ m, enclosed by contour	34° 20'.19 S	115° 19'.22 E
--------	---	--------------	---------------

Aus 757 [506/2017]

Insert	depth, 14 ₇ m, enclosed by contour	34° 20'.19 S	115° 19'.22 E
--------	---	--------------	---------------

	depth, 7 ₇ m, enclosed by contour	34° 20'.15 S	115° 21'.45 E
--	--	--------------	---------------

	depth, 19 ₉ m, enclosed by contour	34° 47'.21 S	115° 56'.65 E
--	---	--------------	---------------

Aus 758 [1177/2016]

Insert	depth, 19 ₉ m, enclosed by contour	34° 47'.21 S	115° 56'.65 E
--------	---	--------------	---------------

	depth, 18 ₂ m, enclosed by contour	34° 55'.80 S	116° 07'.72 E
--	---	--------------	---------------

	depth, 18 ₃ m, enclosed by contour	34° 57'.42 S	116° 07'.57 E
--	---	--------------	---------------

Aus 762 [409/2017]

Insert	depth, 7 ₅ m, enclosed by contour	34° 02'.95 S	122° 06'.59 E
--------	--	--------------	---------------

	depth, 7m, enclosed by contour	34° 02'.43 S	122° 14'.49 E
--	--------------------------------	--------------	---------------

	depth, 6 ₄ m, enclosed by contour	34° 08'.54 S	122° 13'.29 E
--	--	--------------	---------------

	depth, 11 ₉ m, enclosed by contour	34° 10'.29 S	122° 14'.68 E
--	---	--------------	---------------

	depth, 6 ₁ m, enclosed by contour	34° 08'.20 S	122° 15'.90 E
--	--	--------------	---------------

Delete	depth, 29m enclosed by contour	34° 02'.9 S	122° 06'.4 E
--------	--------------------------------	-------------	--------------

	depth, 40m	34° 02'.4 S	122° 14'.4 E
--	------------	-------------	--------------

Aus 763 [915/2018]

Insert	depth, 7 ₅ m, enclosed by contour	34° 02'.95 S	122° 06'.59 E
--------	--	--------------	---------------

	depth, 7m, enclosed by contour	34° 02'.43 S	122° 14'.49 E
--	--------------------------------	--------------	---------------

	depth, 6 ₄ m, enclosed by contour	34° 08'.54 S	122° 13'.29 E
--	--	--------------	---------------

	depth, 11 ₉ m, enclosed by contour	34° 10'.29 S	122° 14'.68 E
--	---	--------------	---------------

	depth, 6 ₁ m, enclosed by contour	34° 08'.20 S	122° 15'.90 E
--	--	--------------	---------------

	depth, 8 ₈ m, enclosed by contour	34° 02'.73 S	122° 19'.16 E
--	--	--------------	---------------

	depth, 12 ₅ m, enclosed by contour	34° 06'.28 S	122° 28'.47 E
--	---	--------------	---------------

	depth, 5 ₈ m, enclosed by contour	34° 12'.19 S	122° 30'.20 E
--	--	--------------	---------------

	depth, 11 ₂ m, enclosed by contour	34° 11'.82 S	122° 49'.76 E
--	---	--------------	---------------

	depth, 14 ₂ m, enclosed by contour	34° 10'.93 S	123° 00'.58 E
--	---	--------------	---------------

1128	AUSTRALIA - WESTERN AUSTRALIA - Cape Leeuwin to Point Malcom - Depths			
	depth, 6 ₇ m, enclosed by contour		34° 00'.90 S	123° 11'.07 E
	depth, 14 ₇ m, enclosed by contour		34° 01'.18 S	123° 12'.11 E
	depth, 11 ₇ m, enclosed by contour		34° 01'.11 S	123° 12'.71 E
	depth, 2 ₄ m, enclosed by contour		33° 59'.99 S	123° 13'.32 E
	depth, 12 ₃ m, enclosed by contour		34° 02'.13 S	123° 16'.05 E
	depth, 14 ₄ m, enclosed by contour		34° 17'.35 S	123° 34'.47 E
	depth, 6 ₈ m, enclosed by contour		34° 19'.75 S	123° 33'.47 E
Replace	depth, 12 ₆ m, with depth, 8 ₄ m		34° 04'.6 S	122° 19'.3 E
	depth, 25m, with depth, 12 ₉ m		34° 05'.8 S	122° 20'.9 E
	depth, 27m, with depth, 12 ₁ m, enclosed by contour		34° 00'.9 S	122° 58'.7 E
	depth, 29m, with depth, 10 ₆ m		34° 02'.5 S	123° 04'.1 E
	depth, 18 ₁ m, with depth, 11 ₂ m		34° 02'.3 S	123° 05'.3 E
	depth, 21 ₅ m, with depth, 6 ₈ m, enclosed by contour		34° 02'.9 S	123° 14'.8 E
Delete	depth, 29m		34° 02'.9 S	122° 06'.4 E
	depth, 40m		34° 02'.4 S	122° 14'.4 E
	depth, 30 ₅ m		34° 06'.2 S	122° 28'.7 E
	depth, 19 ₉ m, and enclosing contour		34° 01'.2 S	122° 58'.6 E
	depth, 11 ₆ m		34° 19'.9 S	123° 33'.3 E
	depth, 23 ₅ m		34° 01'.2 S	123° 12'.5 E
	depth, 25m		34° 02'.2 S	123° 15'.8 E
	Aus 4726 (INT 726) [1021/2018]			
Replace	depth, 12 ₆ m, with depth, 8 ₄ m		34° 04'.6 S	122° 19'.3 E
	depth, 69m, with danger circle		34° 11'.8 S	122° 49'.8 E
	Aus 4727 (INT 727) [1024/2018]			
Insert	depth, 14 ₄ m, enclosed by contour		34° 17'.4 S	123° 34'.5 E
	depth, 11m, and extend contour SE to enclose		33° 48'.9 S	123° 51'.4 E
Replace	depth, 12 ₆ m, with depth, 8 ₄ m		34° 04'.6 S	122° 19'.3 E
1129	AUSTRALIA - WESTERN AUSTRALIA - Geraldton - Light withdrawn			
Mid West Ports				
	Aus 332 [963/2018]			
Delete	light		28° 47'.3 S	114° 41'.3 E
	Aus 751 [963/2018]			
Delete	light		28° 47'.3 S	114° 41'.3 E
	Aus 4708 (INT 708) [1127/2018]			
Delete	aeronautical radiobeacon		28° 47'.3 S	114° 41'.3 E
	Aus 4725 (INT 725) [1127/2018]			
Delete	light		28° 47'.3 S	114° 41'.3 E
1130	AUSTRALIA - WESTERN AUSTRALIA - Lookout Point - Historic wreck			
Australian Hydrographic Office				
	Aus 759 [1022/2018]			
Insert	# with magenta legend, <i>Historic Wk</i> (see Note)		34° 52'.19 S	118° 24'.22 E
Delete	historic wreck		34° 49'.9 S	118° 24'.1 E
1131	AUSTRALIA - WESTERN AUSTRALIA - Onslow - Beadon Point - Light amended			
Australian Hydrographic Office				
	Aus 69 (Onslow) [200/2018]			
Amend	light to <i>Mo(U)15s</i>		21° 37'.59 S	115° 05'.81 E

1132 INDIAN OCEAN - Christmas Island - Flying Fish Cove - Historic wrecks

Australian Hydrographic Office

Aus 920 (Flying Fish Cove) [676/2018]

Insert	magenta legend, <i>Historic Wk (see Note)</i>	10° 25'.523 S	105° 40'.233 E
	magenta legend, <i>Historic Wk (see Note)</i>	10° 26'.500 S	105° 39'.474 E

Delete	legend, Wk	10° 26'.50 S	105° 39'.47 E
--------	------------	--------------	---------------

Aus 920 (Norris Point) [676/2018]

Insert	accompanying note in N border	10° 26'.0501 S	105° 42'.7000 E
--------	-------------------------------	----------------	-----------------

1133 AUSTRALIA - VICTORIA - Port Phillip - Point Gellibrand - Light beacon

Parks Victoria Notice 335/2018

Aus 154 [1081/2018]

Insert	south cardinal light beacon, VQ(6)+LFl. 10s, with topmark	37° 52'.514 S	144° 54'.288 E
--------	---	---------------	----------------

1134 AUSTRALIA - VICTORIA - Portland - Light

Australian Hydrographic Office

Aus 4728 (INT 728) [567/2018]

Delete	light	38° 20'.2 S	141° 36'.5 E
--------	-------	-------------	--------------

1135 AUSTRALIA - VICTORIA - Western Port - Watson Inlet - Buoy*Former Notice - 595(T)/2018 is cancelled*

Parks Victoria Notice 342/2018

Aus 151 [572/2018]

Replace	beacon with starboard lateral conical buoy, No5, without topmark	38° 15'.29 S	145° 15'.79 E
---------	--	--------------	---------------

1136 AUSTRALIA - TASMANIA - Devonport - Light; aeronautical beacon

Tasmanian Ports Corporation

Aus 164 [967/2018]

Delete	light	41° 10'.33 S	146° 25'.65 E
--------	-------	--------------	---------------

Aus 799 [824/2018]

Delete	light	41° 10'.3 S	146° 25'.7 E
	aeronautical beacon	41° 10'.5 S	146° 25'.8 E

1137 AUSTRALIA - TASMANIA - Port of Hobart - River Derwent - Macquarie Wharves - Lights

Tasmanian Ports Corporation

Aus 172 [248/2018]

Amend	light to 3F.R (vert)	42° 52'.94 S	147° 20'.49 E
	light to 3F.R (vert)	42° 52'.61 S	147° 20'.47 E

Aus 172 (Sullivans Cove) [248/2018]

Amend	light to 3F.R (vert)	42° 52'.94 S	147° 20'.49 E
	light to 3F.R (vert)	42° 52'.61 S	147° 20'.47 E

1138 SOLOMON ISLANDS - Guadalcanal Island - Honiara to Mbanina Point - Wrecks

Australian Hydrographic Office

SLB 101 (Lungga Roads) [869/2018]

Move	wreck	9° 25'.32 S	159° 57'.62 E
	to	9° 25'.302 S	159° 57'.592 E

SLB 101 (Honiara) [869/2018]

Move	wreck	9° 25'.32 S	159° 57'.62 E
	to	9° 25'.302 S	159° 57'.592 E

SLB 201 [923/2018]

Insert	non dangerous wreck	9° 21'.18 S	159° 50'.91 E
	non dangerous wreck	9° 21'.85 S	159° 51'.56 E

Delete	depth, 75m	9° 21'.1 S	159° 51'.0 E
	depth, 3 ₂ m	9° 21'.9 S	159° 51'.6 E

1139 SOLOMON ISLANDS - Vella Lavella Island - Nav aids

Solomon Islands Maritime Safety Administration

SLB 301 [969/2018]

Insert	accompanying block	7° 38'.0 S	156° 37'.0 E
--------	--------------------	------------	--------------

Delete	beacon, with legend Bns	8° 15'.8 S	156° 31'.2 E
	beacon	8° 16'.0 S	156° 31'.3 E

1140(T)/2018 AUSTRALIA - QUEENSLAND - Brisbane River - Lytton and Quarantine Reach - Dredging operations
Maritime Safety Queensland Notice 497(T)/2018

A temporary dredge pump out facility for the *TSHD Brisbane* will be established in the vicinity of position 27° 24'.70 S 153° 08'.71 E.

A pipeline marked by 3 special light buoys, Q.Y, will run directly towards the northern bank.

Mariners are advised to navigate with caution in the area.

Chart temporarily affected - Aus 237 - Aus 238

1141(T)/2018 AUSTRALIA - QUEENSLAND - Great Sandy Strait - Tin Can Bay - Wreck; light buoys
Maritime Safety Queensland Notice 496(T)/2018

A wreck marked by two special light buoys, *Fl.Y.2-5s*, exists in position 25° 54'.13 S 153° 01'.60 E.

Chart temporarily affected - Aus 240

1142(T)/2018 AUSTRALIA - QUEENSLAND - Lucinda - Hinchinbrook Channel - Scientific Instruments
Maritime Safety Queensland

Subsurface scientific instruments marked by special buoys exist in positions 18° 29'.41 S 146° 15'.44 E and 18° 31'.71 S 146° 22'.60 E.

A subsurface scientific instruments exists in position 18° 31'.06 S 146° 19'.58 E.

Chart temporarily affected - Aus 259 - Aus 267

1143(T)/2018 AUSTRALIA - QUEENSLAND - Mackay - Harbour works

Former Notice - 1030(T)/2018 is cancelled

Maritime Safety Queensland Notice 464(T)/2018

Vessel *Water Beetle* and a support vessel are conducting harbour works at Berth 4 (21° 06'.33 S 149° 13'.46 E) and 5 (21° 06'.20 S 149° 13'.67 E).

Vessels will monitor VHF 10, 13 and 16.

Mariners are advised to navigate with caution in the area.

Chart temporarily affected - Aus 250

1144(T)/2018 AUSTRALIA - QUEENSLAND - Moreton Bay - Ship to ship transfer completed

Former Notice - 731(T)/2018 is cancelled

Maritime Safety Queensland Notice 308(T)/2018

Cancel this notice on receipt.

Chart formerly affected - Aus 236

1145(T)/2018 AUSTRALIA - QUEENSLAND - Moreton Bay - Raby Bay - Wreck

Maritime Safety Queensland Notice 468(T)/2018

A wreck marked by a special light buoy, *Fl.Y.2-5s*, exists in position 27° 30'.64 S 153° 16'.46 E.

Chart temporarily affected - Aus 236

1146(T)/2018 AUSTRALIA - QUEENSLAND - South Molle Island - Harbour works

Maritime Safety Queensland Notice 484(T)/2018

Works associated with the demolition of the wharf (20° 15'.64 S 148° 50'.32 E) are in progress.

Barge *Steel Ranger* and tug *Alkira* are on site and will monitor VHF Ch 16.

Mariners are advised to navigate with caution in the area.

Chart temporarily affected - Aus 252 - Aus 253

1147(T)/2018 AUSTRALIA - QUEENSLAND - Whitsunday Island - Reef Point - Light buoy off station

Maritime Safety Queensland Notice 493(T)/2018

The port lateral light buoy, *Fl.R.2.5s* (20° 17'.46 S 148° 54'.68 E), is off station.

Chart temporarily affected - Aus 252 - Aus 253 - Aus 254

1148(T)/2018 PAPUA NEW GUINEA - Banaru Reef to Wogoromodo Reef - Light beacons unlit

National Maritime Safety Authority PNG Warning 31/2018

The following light beacons are unlit:

<i>Position</i>	<i>Remarks</i>
6° 08'.30 S 155° 39'.03 E	<i>Fl(2)G.8s 8m</i>
6° 10'.12 S 155° 39'.03 E	<i>Fl(2)R.12s 8m</i>

Chart temporarily affected - Aus 399 - Aus 683 - SLB 301

1149(T)/2018 PAPUA NEW GUINEA - Bismarck Sea - Alim Island - Light unlit

National Maritime Safety Authority PNG Warning 32/2018

The light, *Fl.5s 31m 10M* (2° 53'.31 S 147° 03'.68 E), is unlit.

Chart temporarily affected - Aus 391 - Aus 4603 (INT 603) - Aus 4604 (INT 604) - Aus 4622 (INT 622)

1150(T)/2018 PAPUA NEW GUINEA - Cape Nelson - Kanawetu Point - Light unlit

National Maritime Safety Authority PNG Warning 33/2018

The light, *Fl(2)6s 9M* (9° 02'.41 S 149° 18'.89 E), is unlit.

Chart temporarily affected - Aus 519 - Aus 520 - Aus 4620 (INT 620) - Aus 4621 (INT 621)

1151(T)/2018 PAPUA NEW GUINEA - Walis Island - Light relit

Former Notice - 1034(T)/2018 is cancelled

National Maritime Safety Authority PNG Warning 30/2018

Cancel this notice on receipt.

Chart formerly affected - Aus 389 - Aus 4622 (INT 622)

1152(T)/2018 AUSTRALIA - NORTHERN TERRITORY - Gove Harbour - Scientific instruments

Rio Tinto

Subsurface scientific instruments exist in positions 12° 07'.94 S 136° 41'.51 E and 12° 18'.15 S 137° 00'.00 E.

Chart temporarily affected - Aus 715

1153(T)/2018 AUSTRALIA - TIMOR SEA - Sahul Banks - Drilling operations
 MODU Development Driller 1

Drill rig *Development Driller 1* is conducting drilling operations in position 11° 55'.70 S 124° 52'.90 E.

Chart temporarily affected - Aus 314 - Aus 4721 (INT 721) - Aus 4722 (INT 722)

1154(T)/2018 AUSTRALIA - WESTERN AUSTRALIA - Beadon Bay to Port of Ashburton - Scientific instruments
 Department of Transport WA Notice 166/2018

Special light buoys, *Fl. Y. 3s*, exists in the following positions:

21° 33'.89 S 115° 13'.66 E
 21° 37'.52 S 115° 06'.69 E
 21° 37'.60 S 115° 07'.30 E
 21° 37'.66 S 115° 08'.94 E
 21° 37'.87 S 115° 08'.63 E
 21° 40'.57 S 115° 02'.62 E.

Chart temporarily affected - Aus 64 - Aus 69

1155(T)/2018 AUSTRALIA - WESTERN AUSTRALIA - Bunbury - Dredging operations completed

Former Notice - 371(T)/2018 is cancelled
 Department of Transport WA

Cancel this notice on receipt.

Chart formerly affected - Aus 115

1156(T)/2018 AUSTRALIA - WESTERN AUSTRALIA - Muiron Islands - Drilling operations northwards moved

Former Notice - 745(T)/2018 is cancelled
 MODU Development Driller 1

Cancel this notice on receipt.

Chart formerly affected - Aus 744

1157(P)/2018 AUSTRALIA - WESTERN AUSTRALIA - Point D'Entrecasteaux to Point Nuyts - Shoaling

LADS Flight

Latest survey shows shoaler depths than those charted may exist in an area bounded by the coast and the following positions:

34° 50'.71 S 116° 08'.52 E
 35° 01'.54 S 116° 10'.54 E
 35° 03'.52 S 116° 37'.62 E.

Mariners are advised to navigate with caution in the area.

Charts will be updated in due course.

Chart which will be affected - Aus 336 - Aus 758

1158(P)/2018 AUSTRALIA - WESTERN AUSTRALIA - Wyndham - Roe Bank - Shoaling

Former Notice - 171(P)/2018 is cancelled
UKHO

Latest survey shows shoaler depths than those charted may exist between Middle Ground (15° 17'.85 S 128° 05'.70 E) and east cardinal light buoy, VQ(3)5s Mangrove (15° 21'.00 S 128° 06'.63 E), with least depths as follows:

<i>Position</i>	<i>Depth</i>
15° 17'.89 S 128° 05'.30 E	-1.5m
15° 18'.28 S 128° 05'.91 E	3.1m
15° 18'.63 S 128° 05'.35 E	1.9m
15° 18'.91 S 128° 05'.22 E	-0.8m
15° 19'.32 S 128° 06'.19 E	-1.4m
15° 20'.01 S 128° 06'.49 E	-1m
15° 20'.51 S 128° 06'.31 E	1.2m

Mariners are advised to navigate with caution in the area.

Chart which will be affected - Aus 32**1159(T)/2018 AUSTRALIA - VICTORIA - Cape Conran - Obstruction southwards**

Cooper Energy

An obstruction exists in position 38° 00'.71 S 148° 47'.09 E.

Mariners are advised to navigate with caution in the area. 500m clearance requested.

Chart temporarily affected - Aus 357**1160(T)/2018 AUSTRALIA - VICTORIA - Cape Conran - Subsea operations; pipeline operations southwards**

Former Notice - 795(T)/2018 is cancelled
Cooper Energy

Cancel this notice on receipt.

Chart formerly affected - Aus 357**1161(T)/2018 AUSTRALIA - VICTORIA - Lakes Entrance - Pipeline operations southeastwards**

Esso Australia Pty Ltd

Vessels *Seven Eagle* and *Bhagwan Dryden* are conducting pipeline works between Halibut A platform (38° 24'.24 S 148° 19'.21 E) and Cobia A platform (38° 26'.96 S 148° 18'.55 E).

Mariners are advised to navigate with caution in the area.

Chart temporarily affected - Aus 357 - Aus 487**1162(T)/2018 AUSTRALIA - VICTORIA - Port Phillip - Martha Point - Light buoy restored**

Former Notice - 343(T)/2018 is cancelled
Parks Victoria Notice 356/2018

Cancel this notice on receipt.

Chart formerly affected - Aus 158**1163(T)/2018 AUSTRALIA - VICTORIA - Port Phillip - Indented Head - Light buoy off station**

Parks Victoria Notice 372(T)/2018

The east cardinal light buoy, Q(3) 10s (38° 09'.05 S 144° 43'.39 E), is off station.

Chart temporarily affected - Aus 157

1164(T)/2018 AUSTRALIA - VICTORIA - Western Port - Gentle Annie Channel - Buoy off station
Parks Victoria Notice 371(T)/2018

The port lateral cylindrical buoy, No6 (38° 14'.22 S 145° 20'.85 E), is off station.

Chart temporarily affected - Aus 150 - Aus 151

II

HYDROGRAPHIC REPORTS

NIL

III

NAVIGATION WARNINGS

The Australian Hydrographic Office will no longer compile Section III of the Australian Notices to Mariners. For the most up to date navigation warnings please refer to:

AMSA Navigation Warnings

<http://amsa.gov.au/search-and-rescue/distress-and-safety-comms/msi/msi-email/index.asp>

New Zealand Notices to Mariners (Navarea XIV warnings)

<http://www.linz.govt.nz/sea/maritime-safety/notices-mariners>

To accompany Australian Notice to Mariners 1112/2018

REEFREP MANDATORY SHIP REPORTING
SYSTEM (SRS)

The ship reporting system area encloses Torres Strait and the Great Barrier Reef. For details and categories of ships required to participate see Australian Seafarers Handbook AHP 20, Australia Pilot Volume III, NP 15 and Admiralty List of Radio Signals Volume 6(4).

When reporting within the REEFREP area, vessels are to call 'REEFVTS' on VHF channels 11 or 14 depending on the ship's position. INMARSAT-C should be used for communicating with REEFVTS when VHF communications are limited.

Note for chart Aus 268

To accompany Australian Notice to Mariners 1123/2018

HISTORIC WRECK

The site of an historic wreck is protected from unauthorised interference. For details see Seafarers Handbook for Australian Waters AHP 20.

Note for chart Aus 16

To accompany Australian Notice to Mariners 1116/2018

REEFREP MANDATORY SHIP REPORTING
SYSTEM (SRS)

The ship reporting system area encloses Torres Strait and the Great Barrier Reef. For details and categories of ships required to participate see Australian Seafarers Handbook AHP 20, Australia Pilot Volume III, NP 15 and Admiralty List of Radio Signals Volume 6(4).

When reporting within the REEFREP area, vessels are to call 'REEFVTS' on VHF channels 11 or 14 depending on the ship's position. INMARSAT-C should be used for communicating with REEFVTS when VHF communications are limited.

Note for chart Aus 246

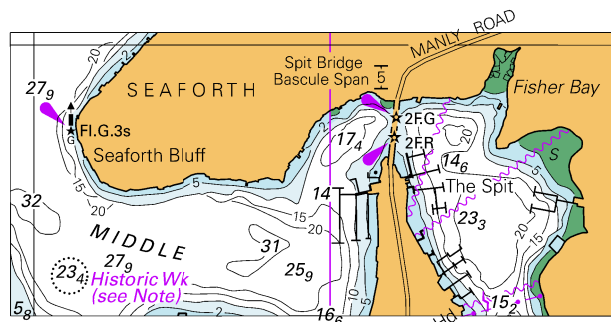
To accompany Australian Notice to Mariners 1132/2018

HISTORIC WRECK

The site of an historic wreck is protected from unauthorised interference. For details see Seafarers Handbook for Australian Waters AHP 20.

Note for chart Aus 920

To accompany Australian Notice to Mariners 1110/2018

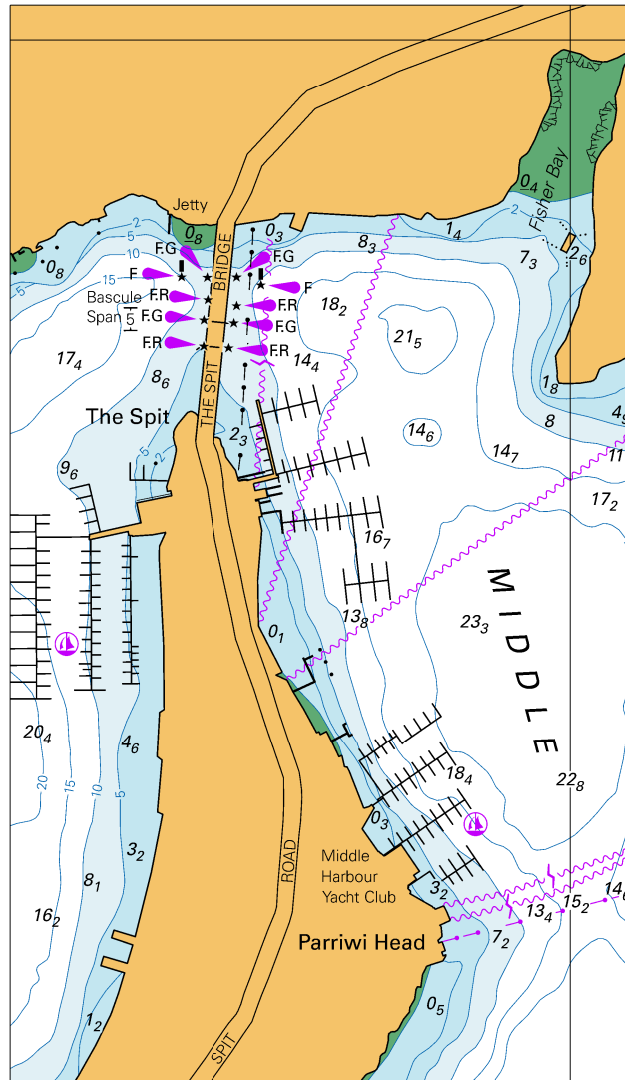


© Commonwealth of Australia 2018

Block for Chart Aus 200

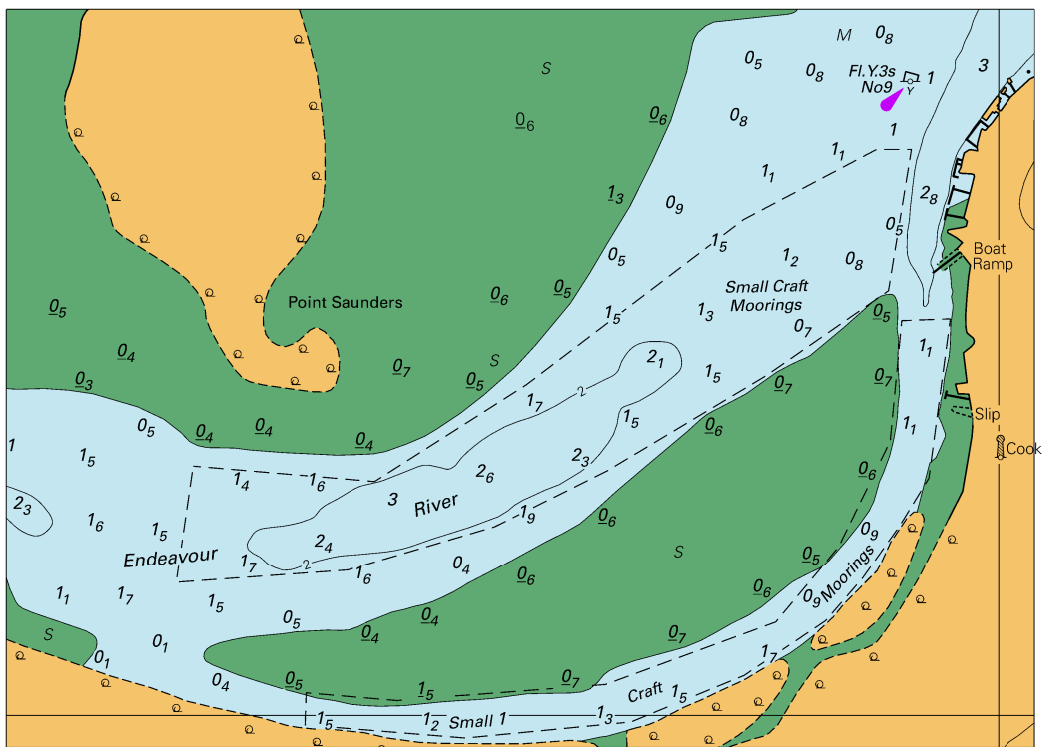
(80.6 x 37.4mm)

To accompany Australian Notice to Mariners 1110/2018



© Commonwealth of Australia 2018
Block for Chart Aus 201 (82.3 x 142.3mm)

To accompany Australian Notice to Mariners 1114/2018

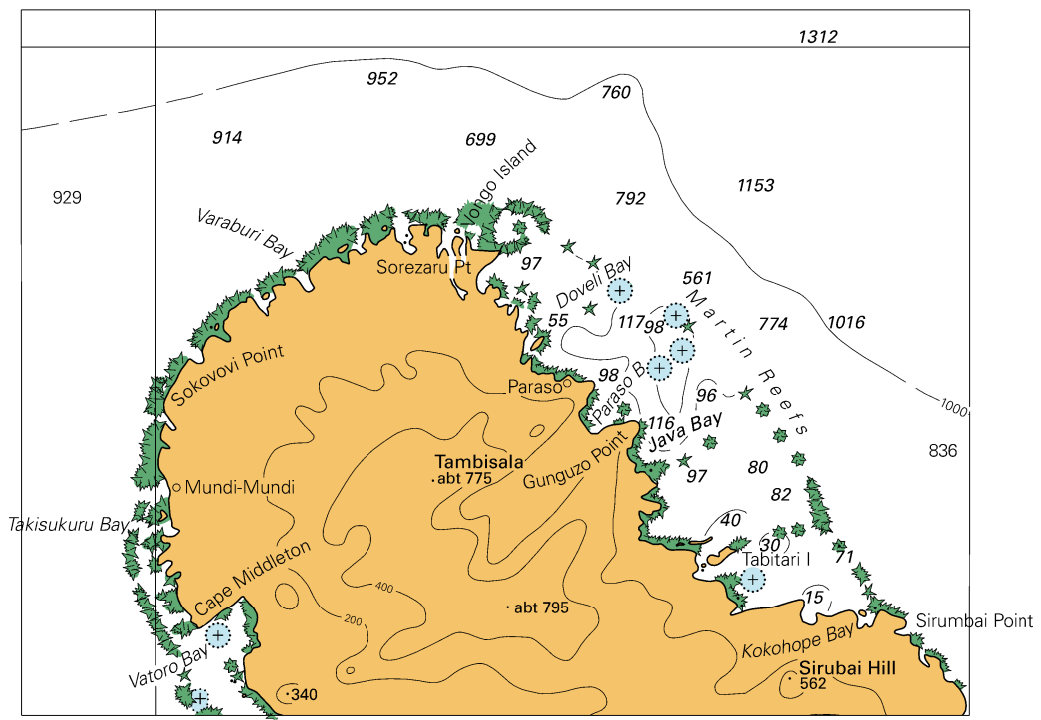


Block for Chart Aus 270

© Commonwealth of Australia 2018

(136.0 x 97.6mm)

To accompany Australian Notice to Mariners 1139/2018



Block for Chart SLB 301

© Commonwealth of Australia 2018

(125.2 x 93.3mm)