



19 October 2018

Edition 21

# AUSTRALIAN NOTICES TO MARINERS

**Notices 896 - 944**

Published fortnightly by the Australian Hydrographic Office



Australian Notices to Mariners are the authority for correcting charts and publications published by the Australian Hydrographic Office covering Australia, Papua New Guinea, Solomon Islands, Australian Antarctic Territory and Timor-Leste.

Commodore F.T. FREEMAN RAN  
*Hydrographer of Australia*

---

## SECTIONS.

- I. **Australian Notices to Mariners, including blocks and notes.**
- II. **Hydrographic Reports.**
- III. **Navigational Warnings.**

## SUPPLEMENTS.

- I. **Tracings**
- II. **Cumulative List of Australian Notices to Mariners.**
- III. **Cumulative List of Temporary and Preliminary Australian Notices to Mariners.**
- IV. **Temporary and Preliminary Notices in force.**
- V. **Amendments to Admiralty List of Lights and Fog Signals (Vol K), Radio Signals (NP 281(2), 282, 283(2), 285, 286(4)) and Sailing Directions (NP 9, 13, 14, 15, 33, 34, 35, 36, 39, 44, 51, 60, 61, 62, 100, 136).**

---

© Commonwealth of Australia 2018

This work is copyright. Apart from any use permitted under the Copyright Act 1968, no part may be reproduced by any process, adapted, communicated or commercially exploited without prior written permission from The Commonwealth represented by the Australian Hydrographic Office.

## IMPORTANT NOTICE

This edition of Notices to Mariners includes all significant information affecting AHO products which the AHO has become aware of since the last edition. All reasonable efforts have been made to ensure the accuracy and completeness of the information, including third party information, on which these updates are based. The AHO regards third parties from which it receives information as reliable, however the AHO cannot verify all such information and errors may therefore exist. The AHO does not accept liability for errors in third party information.

---

## GENERAL INSTRUCTIONS

The substance of these notices should be inserted on the charts affected.

Bearings are referred to the true compass and are reckoned clockwise from North; those relating to lights are given as seen by an observer from seaward.

Positions quoted in notices relate to WGS84 which is the horizontal datum for all charts produced by the Australian Hydrographic Office.

The range quoted for a light is its nominal range.

Depths are with reference to the chart datum of each chart. Heights are above mean high water springs or mean higher high water, as appropriate.

The capital letter (P) or (T) after the number of any notice denotes a preliminary or temporary notice respectively, which are contained separately at the end of the permanent notices.

---

## REPORTING OF DANGERS

Mariners are particularly requested to notify the AUSTRALIAN HYDROGRAPHIC OFFICE, Locked Bag 8801 Wollongong, NSW 2500 (Fax 02-4223 6599, e-mail [datacentre@hydro.gov.au](mailto:datacentre@hydro.gov.au) or, alternatively by filling in and submitting the [Hydrographic Notes](#) forms located on the web site – [www.hydro.gov.au](http://www.hydro.gov.au)), immediately on the discovery of new dangers or suspected dangers to navigation. For changes or defects in aids to navigation notify AusSAR (Fax 02-6230 6868 or email [rccaus@amsa.gov.au](mailto:rccaus@amsa.gov.au)).

---

## AUTHORISED USE

Copies of Australian notices are available free of charge from the Australian Hydrographic Office (AHO) website ([www.hydro.gov.au](http://www.hydro.gov.au)) and through the eNotices (email) service ([www.hydro.gov.au/enotices/enotices.htm](http://www.hydro.gov.au/enotices/enotices.htm)).

Individual Notices may be copied for the purpose of inserting Notice substance on official charts and publications. Paper copies may be printed by chart agents and distributed to customers on a cost recovery basis. Participating chart agents are listed on the AHO website as providing a 'Paper Notices to Mariners' service ([www.hydro.gov.au/webapps/jsp/agents/agents-list.jsp](http://www.hydro.gov.au/webapps/jsp/agents/agents-list.jsp)). Copies of the notices may not be sold for profit without prior written agreement.

## NUMERICAL INDEX OF NOTICES TO MARINERS

### Edition No 21

| Notices | Aus Chart, INT Chart, ENC Cell, AHP, BA Pubs                           |
|---------|--|
| 896     | Products - New Charts, New Editions, Withdrawn Charts                  |
| 897     | Aus 191  |
| 898     | Aus 489, 807, 808  |
| 899     | Aus 193  |
| 900     | Aus 200, 202   |
| 901     | Aus 4060, 4604, INT 60, 604  |
| 902     | Aus 4060, INT 60   |
| 903     | Aus 242, 243, 818  |
| 904     | Aus 256  |
| 905     | Aus 230  |
| 906     | Aus 301, 367, 377, 490, 4620, 4621, 4635, 4720, INT 620, 621, 635, 720 |
| 907     | Aus 256, 827   |
| 908     | Aus 243, 367, 490, 817, 818, 820                                       |
| 909     | Aus 252  |
| 910     | Aus 4  |
| 911     | Aus 618  |
| 912     | Aus 389, 4622, INT 622   |
| 913     | Aus 17   |
| 914     | Aus 716  |
| 915     | Aus 119, 763, 4727, INT 727  |
| 916     | Aus 50, 51   |
| 917     | Aus 114, 117   |
| 918     | Aus 778  |
| 919     | Aus 178  |
| 920     | SLB 102, 302   |
| 921     | SLB 104  |
| 922     | SLB 103  |
| 923     | SLB 201, 303, 304, 305   |
| 924(T)  | Aus 244, 245, 246, 271   |
| 925(T)  | Aus 249, 823   |
| 926(T)  | Aus 252, 254   |
| 927(T)  | Aus 256  |
| 928(T)  | Aus 236  |
| 929(T)  | Aus 256, 827   |
| 930(T)  | Aus 248, 260, 367, 490, 820, 822                                       |
| 931(T)  | Aus 260, 261, 822  |
| 932(T)  | Aus 260, 822   |
| 933(T)  | Aus 256, 827   |
| 934(P)  | Aus 616  |
| 935(T)  | Aus 386, 520, 521, 522, 523, 4620, 4621, 4622, INT 620, 621, 622       |
| 936(T)  | Aus 519, 520, 4604, 4620, 4621, INT 604, 620, 621                      |
| 937(T)  | Aus 754  |
| 938(T)  | Aus 328, 329, 744  |
| 939(T)  | Aus 328, 329, 744  |
| 940(T)  | Aus 328, 329, 4723, 4725, INT 723, 725                                 |
| 941(T)  | Aus 328, 4723, 4725, INT 723, 725                                      |
| 942(T)  | Aus 327, 4723, INT 723   |
| 943(T)  | Aus 312, 4721, INT 721   |
| 944(T)  | Aus 112, 754   |

# NUMERICAL INDEX OF CHARTS AFFECTED

## Edition No 21

| Aus Chart | Notices                          |
|-----------|----------------------------------|
| Aus 4     | 910                              |
| Aus 17    | 913                              |
| Aus 50    | 916                              |
| Aus 51    | 916                              |
| Aus 112   | 944(T)                           |
| Aus 114   | 917                              |
| Aus 117   | 917                              |
| Aus 119   | 915                              |
| Aus 178   | 919                              |
| Aus 191   | 897                              |
| Aus 193   | 899                              |
| Aus 200   | 900                              |
| Aus 202   | 900                              |
| Aus 230   | 905                              |
| Aus 236   | 928(T)                           |
| Aus 242   | 903                              |
| Aus 243   | 903, 908                         |
| Aus 244   | 924(T)                           |
| Aus 245   | 924(T)                           |
| Aus 246   | 924(T)                           |
| Aus 248   | 930(T)                           |
| Aus 249   | 925(T)                           |
| Aus 252   | 909, 926(T)                      |
| Aus 254   | 926(T)                           |
| Aus 256   | 904, 907, 927(T), 929(T), 933(T) |
| Aus 260   | 930(T), 931(T), 932(T)           |
| Aus 261   | 931(T)                           |
| Aus 271   | 924(T)                           |
| Aus 301   | 906                              |
| Aus 312   | 943(T)                           |
| Aus 327   | 942(T)                           |
| Aus 328   | 938(T), 939(T), 940(T), 941(T)   |
| Aus 329   | 938(T), 939(T), 940(T)           |
| Aus 367   | 906, 908, 930(T)                 |
| Aus 377   | 906                              |
| Aus 386   | 935(T)                           |
| Aus 389   | 912                              |
| Aus 489   | 898                              |
| Aus 490   | 906, 908, 930(T)                 |
| Aus 519   | 936(T)                           |
| Aus 520   | 935(T), 936(T)                   |
| Aus 521   | 935(T)                           |
| Aus 522   | 935(T)                           |
| Aus 523   | 935(T)                           |
| Aus 616   | 934(P)                           |
| Aus 618   | 911                              |
| Aus 716   | 914                              |
| Aus 744   | 938(T), 939(T)                   |
| Aus 754   | 937(T), 944(T)                   |
| Aus 763   | 915                              |
| Aus 778   | 918                              |
| Aus 807   | 898                              |
| Aus 808   | 898                              |
| Aus 817   | 908                              |

| Aus Chart | Notices                |
|-----------|------------------------|
| Aus 818   | 903, 908               |
| Aus 820   | 908, 930(T)            |
| Aus 822   | 930(T), 931(T), 932(T) |
| Aus 823   | 925(T)                 |
| Aus 827   | 907, 929(T), 933(T)    |
| Aus 4060  | 901, 902               |
| Aus 4604  | 901, 936(T)            |
| Aus 4620  | 906, 935(T), 936(T)    |
| Aus 4621  | 906, 935(T), 936(T)    |
| Aus 4622  | 912, 935(T)            |
| Aus 4635  | 906                    |
| Aus 4720  | 906                    |
| Aus 4721  | 943(T)                 |
| Aus 4723  | 940(T), 941(T), 942(T) |
| Aus 4725  | 940(T), 941(T)         |
| Aus 4727  | 915                    |
| SLB 102   | 920                    |
| SLB 103   | 922                    |
| SLB 104   | 921                    |
| SLB 201   | 923                    |
| SLB 302   | 920                    |
| SLB 303   | 923                    |
| SLB 304   | 923                    |
| SLB 305   | 923                    |

| INT Chart | Notices                |
|-----------|------------------------|
| INT 60    | 901, 902               |
| INT 604   | 901, 936(T)            |
| INT 620   | 906, 935(T), 936(T)    |
| INT 621   | 906, 935(T), 936(T)    |
| INT 622   | 912, 935(T)            |
| INT 635   | 906                    |
| INT 720   | 906                    |
| INT 721   | 943(T)                 |
| INT 723   | 940(T), 941(T), 942(T) |
| INT 725   | 940(T), 941(T)         |
| INT 727   | 915                    |

**896 AUSTRALIA - Products - New Charts, New Editions, Withdrawn Charts**

Australian Hydrographic Office

**New Charts**

| Chart | Title and Geographical limits | Scale | Publication Date | Remarks |
|-------|-------------------------------|-------|------------------|---------|
| NIL   |                               |       |                  |         |

**New Electronic Navigation Chart (Aus ENC)**

| Cell Name | Title | Publication Date | Remarks |
|-----------|-------|------------------|---------|
| NIL       |       |                  |         |

**New Editions and Withdrawn Charts**

| Chart | Title | Scale | Publication Date | Remarks |
|-------|-------|-------|------------------|---------|
| NIL   |       |       |                  |         |

**Chart permanently withdrawn**

Charts listed above as withdrawn no longer meet chart carriage requirements and should be marked as "superseded" and replaced with the new chart/ new edition listed prior to passage through the area covered by the new chart.

When placing orders with a chart agent between notice of forthcoming edition and its publication, mariners should advise whether their order pertains to the current edition or the new edition.

For further details refer to the AHO website at [www.hydro.gov.au](http://www.hydro.gov.au) for new edition and new chart stock arrival information.

**897 AUSTRALIA - NEW SOUTH WALES - Batemans Bay - North Head - Historic wreck**

Australian Hydrographic Office

**Aus 191 (Batemans Bay) [508/2018]**

|        |  |               |                |
|--------|--|---------------|----------------|
| Insert | # with magenta legend, <i>Historic Wk</i> (see Note) | 35° 43'.187 S | 150° 16'.775 E |
| Delete | dangerous wreck with legend, PA                      | 35° 43'.19 S  | 150° 16'.78 E  |

**Aus 191 (Bermagui) [508/2018]**

|        |                               |              |               |
|--------|-------------------------------|--------------|---------------|
| Insert | accompanying note in N border | 36° 24'.46 S | 150° 04'.20 E |
|--------|-------------------------------|--------------|---------------|

**898 AUSTRALIA - NEW SOUTH WALES - Beecroft Head - Firing practice area**  
Commonwealth of Australia

On certain copies of Aus489 only.

**Aus 489 [475/2018]**

|        |                                     |              |               |
|--------|-------------------------------------|--------------|---------------|
| Insert | firing practice area limit, between | 34° 59'.00 S | 151° 07'.00 E |
|        |                                     | 35° 08'.90 S | 151° 07'.00 E |
|        |                                     | 35° 05'.45 S | 150° 48'.93 E |
|        |                                     | 35° 05'.45 S | 150° 47'.20 E |
|        |                                     | 35° 06'.10 S | 150° 42'.80 E |
|        |                                     | 35° 04'.33 S | 150° 42'.25 E |
|        |                                     | 35° 02'.30 S | 150° 42'.15 E |
|        |                                     | 35° 00'.00 S | 150° 44'.00 E |
|        |                                     | 35° 01'.40 S | 150° 47'.25 E |
|        |                                     | 35° 01'.40 S | 150° 50'.40 E |
|        |                                     | 34° 59'.00 S | 151° 07'.00 E |

**Aus 807 [186/2018]**

|        |                                     |              |               |
|--------|-------------------------------------|--------------|---------------|
| Insert | firing practice area limit, between | 35° 08'.77 S | 151° 06'.30 E |
|        |                                     | 35° 05'.45 S | 150° 48'.93 E |
|        |                                     | 35° 05'.45 S | 150° 47'.20 E |
|        |                                     | 35° 06'.10 S | 150° 42'.80 E |
|        |                                     | 35° 04'.33 S | 150° 42'.25 E |
|        |                                     | 35° 02'.30 S | 150° 42'.15 E |
|        |                                     | 35° 00'.00 S | 150° 44'.00 E |
|        |                                     | 35° 01'.40 S | 150° 47'.25 E |
|        |                                     | 35° 01'.40 S | 150° 50'.40 E |
|        |                                     | 34° 59'.10 S | 151° 06'.30 E |

**Aus 808 [805/2018]**

|        |                                     |              |               |
|--------|-------------------------------------|--------------|---------------|
| Insert | firing practice area limit, between | 34° 59'.00 S | 151° 07'.00 E |
|        |                                     | 35° 08'.90 S | 151° 07'.00 E |
|        |                                     | 35° 05'.45 S | 150° 48'.93 E |
|        |                                     | 35° 05'.45 S | 150° 47'.20 E |
|        |                                     | 35° 06'.10 S | 150° 42'.80 E |
|        |                                     | 35° 04'.33 S | 150° 42'.25 E |
|        |                                     | 35° 02'.30 S | 150° 42'.15 E |
|        |                                     | 35° 00'.00 S | 150° 44'.00 E |
|        |                                     | 35° 01'.40 S | 150° 47'.25 E |
|        |                                     | 35° 01'.40 S | 150° 50'.40 E |
|        |                                     | 34° 59'.00 S | 151° 07'.00 E |

**899 AUSTRALIA - NEW SOUTH WALES - Jervis Bay - HMAS Creswell - Depths**  
Royal Australian Navy

**Aus 193 [NE 13/7/2018]**

|        |            |               |                |
|--------|------------|---------------|----------------|
| Insert | depth, 5,m | 35° 06'.604 S | 150° 41'.874 E |
| Delete | depth, 9m  | 35° 06'.56 S  | 150° 41'.83 E  |

**900 AUSTRALIA - NEW SOUTH WALES - Port Jackson - Jones Bay - Lights**  
Port Authority of New South Wales Notice 11/2018

**Aus 200 [853/2018]**

|       |                   |              |               |
|-------|-------------------|--------------|---------------|
| Amend | light to 2Fl.R.3s | 33° 51'.74 S | 151° 11'.65 E |
|-------|-------------------|--------------|---------------|

**Aus 202 [709/2018]**

|        |                  |              |               |
|--------|------------------|--------------|---------------|
| Amend  | light to Fl.R.3s | 33° 51'.74 S | 151° 11'.64 E |
|        | light to Fl.R.3s | 33° 51'.74 S | 151° 11'.65 E |
| Delete | light            | 33° 51'.75 S | 151° 11'.65 E |

**901 PACIFIC OCEAN - Balmoral Reef - Shoal northwestwards**

Land Information New Zealand Notice 133/2018

**Aus 4060 (INT 60) [595/2017]**

|        |   |             |              |
|--------|---|-------------|--------------|
| Insert | out of position depth, 13 <sub>6</sub> m, enclosed by danger circle with legend, (2018) | 14° 56'.5 S | 174° 50'.8 E |
|--------|---|-------------|--------------|

**Aus 4604 (INT 604) [854/2018]**

|        |   |             |              |
|--------|---|-------------|--------------|
| Insert | depth, 13 <sub>6</sub> m, enclosed by danger circle with legend, (2018) | 14° 56'.5 S | 174° 50'.8 E |
|--------|---|-------------|--------------|

**902 PACIFIC OCEAN - Foss Bank - Depth**RSV *Southern Surveyor**On certain copies only***Aus 4060 (INT 60) [901/2018]**

|        |   |             |              |
|--------|---|-------------|--------------|
| Insert | depth, 25 <sub>9</sub> m, enclosed by contour | 14° 30'.0 S | 175° 36'.0 E |
|--------|---|-------------|--------------|

|        |   |             |              |
|--------|---|-------------|--------------|
| Delete | out of position depth, 25 <sub>9</sub> m, and enclosing contour | 14° 30'.0 S | 175° 36'.0 E |
|--------|---|-------------|--------------|

**903 AUSTRALIA - QUEENSLAND - Bundaberg - Nav aids; depths**

Maritime Safety Queensland

**Aus 242 (Port Bundaberg) [236/2018]**

|        |                      |             |              |
|--------|----------------------|-------------|--------------|
| Insert | accompanying block A | 24° 45'.3 S | 152° 24'.0 E |
|        | accompanying block B | 24° 45'.3 S | 152° 25'.0 E |

**Aus 243 [236/2018]**

|       |                                   |             |              |
|-------|-----------------------------------|-------------|--------------|
| Amend | light to <i>Iso.Bu.2s (F Day)</i> | 24° 45'.3 S | 152° 23'.5 E |
|       | legend to 270°                    | 24° 45'.2 S | 152° 29'.8 E |

**Aus 818 [495/2017]**

|       |                           |             |              |
|-------|---------------------------|-------------|--------------|
| Amend | light to <i>Iso.Bu.2s</i> | 24° 45'.3 S | 152° 23'.5 E |
|       | legend to 270°            | 24° 45'.2 S | 152° 29'.8 E |

**904 AUSTRALIA - QUEENSLAND - Cleveland Bay - West Channel - Light beacons**

Maritime Safety Queensland

**Aus 256 [769/2018]**

|       |                             |             |              |
|-------|-----------------------------|-------------|--------------|
| Amend | light beacon to Q(9)15s MRW | 19° 11'.6 S | 146° 48'.3 E |
|       | light beacon to Q(3)10s MRE | 19° 12'.1 S | 146° 49'.3 E |

**905 AUSTRALIA - QUEENSLAND - Gold Coast Seaway - Nav aids**

Gold Coast Waterways Authority

**Aus 230 [857/2018]**

|         |   |              |               |
|---------|---|--------------|---------------|
| Replace | beacon, with, port lateral spar buoy, without topmark | 27° 57'.52 S | 153° 24'.84 E |
|---------|---|--------------|---------------|

|        |         |              |               |
|--------|---------|--------------|---------------|
| Delete | topmark | 27° 58'.21 S | 153° 25'.30 E |
|--------|---------|--------------|---------------|

**906 AUSTRALIA - QUEENSLAND - Great Barrier Reef - Ship reporting system**

Maritime Safety Queensland

Note: Larger scale charts will be updated in due course

**Aus 301 [770/2018]**

|        |   |              |               |
|--------|---|--------------|---------------|
| Insert | two-way radio reporting point, orient 045°-225°, with magenta legend, <i>Booby VHF 14</i> | 10° 37'.20 S | 141° 48'.86 E |
|        | magenta legend, <i>Endeavour VHF 14</i>   | 10° 49'.00 S | 142° 15'.00 E |
| Delete | desig, E  | 10° 49'.0 S  | 142° 15'.0 E  |
|        | radio reporting point   | 10° 37'.0 S  | 141° 48'.5 E  |

**Aus 367 [1013/2017]**

|        |   |             |              |
|--------|---|-------------|--------------|
| Delete | radio reporting point and legend SRS (see Note) | 21° 52'.5 S | 150° 45'.0 E |
|--------|---|-------------|--------------|

**Aus 377 [716/2018]**

|        |   |             |               |
|--------|---|-------------|---------------|
| Insert | magenta legend, <i>Bramble VHF 14</i>           | 9° 15'.00 S | 143° 50'.00 E |
| Delete | radio reporting point and legend SRS (see Note) | 09° 23'.9 S | 143° 27'.0 E  |
|        | desig, A  | 9° 15'.0 S  | 143° 50'.0 E  |

**Aus 490 [1064/2017]**

|        |   |              |               |
|--------|---|--------------|---------------|
| Insert | magenta legend, <i>Swain VHF 11 (see SRS Note)</i>      | 21° 50'.00 S | 153° 10'.00 E |
|        | magenta legend, <i>Sandy Cape VHF 14 (see SRS Note)</i> | 24° 30'.00 S | 153° 35'.00 E |
| Delete | radio reporting point and legend SRS (see Note)         | 21° 52'.5 S  | 150° 45'.0 E  |
|        | radio reporting point and legend SRS (see Note)         | 23° 54'.0 S  | 151° 45'.0 E  |
|        | radio reporting point and legend SRS (see Note)         | 23° 44'.5 S  | 151° 32'.0 E  |
|        | radio reporting point and legend SRS (see Note)         | 23° 23'.0 S  | 151° 03'.0 E  |
|        | desig, Z1   | 21° 50'.0 S  | 153° 10'.0 E  |
|        | desig, Z3   | 24° 30'.0 S  | 153° 35'.0 E  |
|        | radio reporting point                                   | 22° 45'.0 S  | 153° 25'.0 E  |
|        | radio reporting point                                   | 24° 30'.0 S  | 152° 48'.0 E  |
|        | radio reporting point                                   | 24° 30'.2 S  | 152° 25'.0 E  |

**Aus 4620 (INT 620) [714/2018]**

|        |  |             |              |
|--------|--|-------------|--------------|
| Insert | magenta legend, <i>Booby</i>                               | 10° 37'.2 S | 141° 48'.9 E |
|        | magenta legend, <i>Blossom</i>                             | 19° 44'.0 S | 150° 25'.5 E |
|        | magenta legend, <i>Palm Passage</i>                        | 18° 15'.0 S | 147° 05'.0 E |
|        | magenta legend, <i>Bramble</i>                             | 9° 15'.0 S  | 143° 50'.0 E |
|        | magenta legend, <i>Endeavour</i>                           | 10° 49'.0 S | 142° 15'.0 E |
| Delete | table, En Route Mandatory Reporting Points                 | 21° 50'.0 S | 142° 15'.0 E |
|        | table, Port Arrival - Departure Mandatory Reporting Points | 21° 32'.0 S | 143° 20'.0 E |
|        | desig, E   | 10° 49'.0 S | 142° 15'.0 E |
|        | desig, U   | 19° 44'.0 S | 150° 25'.5 E |
|        | desig, P   | 16° 40'.0 S | 146° 12'.8 E |
|        | desig, R   | 18° 15'.0 S | 147° 05'.0 E |
|        | desig, A   | 9° 15'.0 S  | 143° 50'.0 E |
|        | desig, D   | 10° 37'.0 S | 141° 48'.5 E |
|        | radio reporting point                                      | 9° 23'.9 S  | 143° 27'.0 E |
|        | radio reporting point                                      | 10° 25'.0 S | 142° 33'.0 E |
|        | radio reporting point                                      | 10° 35'.5 S | 142° 13'.5 E |
|        | radio reporting point                                      | 10° 36'.0 S | 142° 32'.0 E |
|        | radio reporting point                                      | 10° 38'.0 S | 142° 31'.0 E |
|        | radio reporting point                                      | 10° 55'.0 S | 142° 45'.0 E |
|        | radio reporting point                                      | 11° 35'.2 S | 142° 57'.7 E |
|        | radio reporting point                                      | 12° 16'.0 S | 143° 16'.0 E |
|        | radio reporting point                                      | 14° 08'.2 S | 144° 30'.0 E |
|        | radio reporting point                                      | 14° 54'.0 S | 145° 18'.0 E |
|        | radio reporting point                                      | 15° 01'.0 S | 145° 24'.0 E |
|        | radio reporting point                                      | 15° 42'.0 S | 145° 27'.7 E |
|        | radio reporting point                                      | 15° 43'.0 S | 145° 23'.0 E |
|        | radio reporting point                                      | 16° 48'.0 S | 145° 51'.0 E |
|        | radio reporting point                                      | 17° 35'.0 S | 146° 10'.0 E |
|        | radio reporting point                                      | 17° 40'.0 S | 146° 16'.0 E |
|        | radio reporting point                                      | 18° 29'.0 S | 146° 26'.0 E |
|        | radio reporting point                                      | 19° 08'.0 S | 146° 57'.0 E |
|        | radio reporting point                                      | 19° 09'.0 S | 147° 30'.0 E |



|  |  |             |              |
|--|--|-------------|--------------|
| <b>906 AUSTRALIA - QUEENSLAND - Great Barrier Reef - Ship reporting system</b> |  |             |              |
|  | radio reporting point                                      | 19° 16'.0 S | 147° 30'.0 E |
|  | radio reporting point                                      | 19° 48'.0 S | 148° 03'.9 E |
|  | radio reporting point                                      | 20° 10'.0 S | 148° 50'.0 E |
|  | radio reporting point                                      | 20° 12'.0 S | 149° 15'.0 E |
|  | radio reporting point                                      | 20° 15'.0 S | 148° 55'.7 E |
|  | radio reporting point                                      | 20° 33'.0 S | 149° 00'.5 E |
|  | radio reporting point                                      | 20° 36'.0 S | 150° 15'.0 E |
|  | radio reporting point                                      | 21° 08'.0 S | 149° 22'.0 E |
|  | radio reporting point                                      | 21° 12'.5 S | 149° 30'.0 E |
|  | radio reporting point                                      | 21° 52'.5 S | 150° 45'.0 E |
| <b>Aus 4621 (INT 621) [558/2018]</b>   |  |             |              |
| Insert   | magenta legend, <i>Swain</i>                               | 21° 50'.0 S | 153° 10'.0 E |
|  | magenta legend, <i>Blossom</i>                             | 19° 44'.0 S | 150° 25'.5 E |
| Delete   | table, En Route Mandatory Reporting Points                 | 15° 40'.0 S | 157° 00'.0 E |
|  | table, Post Arrival - Departure Mandatory Reporting Points | 16° 15'.0 S | 157° 00'.0 E |
|  | desig, Z1  | 21° 50'.0 S | 153° 10'.0 E |
|  | desig, U   | 19° 44'.0 S | 150° 25'.5 E |
|  | radio reporting point                                      | 19° 48'.0 S | 148° 03'.9 E |
|  | radio reporting point                                      | 20° 10'.0 S | 148° 50'.0 E |
|  | radio reporting point                                      | 20° 12'.0 S | 149° 15'.0 E |
|  | radio reporting point                                      | 20° 15'.0 S | 148° 55'.7 E |
|  | radio reporting point                                      | 20° 33'.0 S | 149° 00'.5 E |
|  | radio reporting point                                      | 20° 36'.0 S | 150° 15'.0 E |
|  | radio reporting point                                      | 21° 08'.0 S | 149° 22'.0 E |
|  | radio reporting point                                      | 21° 12'.5 S | 149° 30'.0 E |
|  | radio reporting point                                      | 21° 52'.5 S | 150° 45'.0 E |
| <b>Aus 4635 (INT 635) [NE 22/9/2017]</b>                                       |  |             |              |
| Insert   | magenta legend, <i>Swain</i>                               | 21° 50'.0 S | 153° 10'.0 E |
|  | magenta legend, <i>Sandy Cape</i>                          | 24° 30'.0 S | 153° 35'.0 E |
| Delete   | table, En Route Mandatory Reporting Points                 | 28° 23'.0 S | 148° 50'.0 E |
|  | table, Post Arrival - Departure Mandatory Reporting Points | 28° 23'.0 S | 149° 50'.0 E |
|  | desig, Z1  | 21° 50'.0 S | 153° 10'.0 E |
|  | desig, Z3  | 24° 30'.0 S | 153° 35'.0 E |
|  | radio reporting point                                      | 20° 10'.0 S | 148° 50'.0 E |
|  | radio reporting point                                      | 20° 12'.0 S | 149° 15'.0 E |
|  | radio reporting point                                      | 20° 15'.0 S | 148° 55'.7 E |
|  | radio reporting point                                      | 20° 33'.0 S | 149° 00'.5 E |
|  | radio reporting point                                      | 20° 36'.0 S | 150° 15'.0 E |
|  | radio reporting point                                      | 21° 08'.0 S | 149° 22'.0 E |
|  | radio reporting point                                      | 21° 12'.5 S | 149° 30'.0 E |
|  | radio reporting point                                      | 21° 52'.5 S | 150° 45'.0 E |
|  | radio reporting point                                      | 22° 45'.0 S | 153° 25'.0 E |
|  | radio reporting point                                      | 23° 23'.0 S | 151° 03'.0 E |
|  | radio reporting point                                      | 23° 44'.5 S | 151° 32'.0 E |
|  | radio reporting point                                      | 23° 54'.0 S | 151° 45'.0 E |
|  | radio reporting point                                      | 24° 30'.0 S | 152° 48'.0 E |
|  | radio reporting point                                      | 24° 30'.2 S | 152° 25'.0 E |
| <b>Aus 4720 (INT 720) [56/2018]</b>  |  |             |              |
| Insert   | magenta legend, <i>Booby</i>                               | 10° 37'.2 S | 141° 48'.9 E |
|  | magenta legend, <i>Endeavour</i>                           | 10° 49'.0 S | 142° 15'.0 E |
| Delete   | desig, E   | 10° 49'.0 S | 142° 15'.0 E |
|  | desig, D   | 10° 37'.0 S | 141° 48'.5 E |
|  | radio reporting point                                      | 9° 23'.9 S  | 143° 27'.0 E |
|  | radio reporting point                                      | 10° 25'.0 S | 142° 33'.0 E |
|  | radio reporting point                                      | 10° 35'.5 S | 142° 13'.5 E |
|  | radio reporting point                                      | 10° 36'.0 S | 142° 32'.0 E |
|  | radio reporting point                                      | 10° 38'.0 S | 142° 31'.0 E |
|  | radio reporting point                                      | 10° 55'.0 S | 142° 45'.0 E |
|  | radio reporting point                                      | 11° 35'.2 S | 142° 57'.7 E |
|  | radio reporting point                                      | 12° 16'.0 S | 143° 16'.0 E |

**907 AUSTRALIA - QUEENSLAND - Halifax Bay - Firing practice area amended**

Commonwealth of Australia

*On certain copies only***Aus 256 [904/2018]**

|        |                                     |              |               |
|--------|-------------------------------------|--------------|---------------|
| Insert | firing practice area limit, between | 19° 05'.30 S | 146° 33'.35 E |
|        |                                     | 19° 08'.96 S | 146° 38'.59 E |
|        |                                     | 19° 05'.45 S | 146° 45'.45 E |
|        |                                     | 19° 00'.80 S | 146° 44'.92 E |

|        |                                     |             |              |
|--------|-------------------------------------|-------------|--------------|
| Delete | firing practice area limit, centred | 19° 03'.5 S | 146° 39'.0 E |
|--------|-------------------------------------|-------------|--------------|

**Aus 827 [667/2018]**

|        |                                     |              |               |
|--------|-------------------------------------|--------------|---------------|
| Insert | firing practice area limit, between | 18° 53'.75 S | 146° 40'.18 E |
|        |                                     | 18° 54'.02 S | 146° 25'.27 E |
|        |                                     | 18° 55'.72 S | 146° 23'.82 E |
|        |                                     | 19° 01'.47 S | 146° 27'.87 E |
|        |                                     | 19° 08'.96 S | 146° 38'.59 E |
|        |                                     | 19° 05'.45 S | 146° 45'.45 E |
|        |                                     | 18° 57'.08 S | 146° 44'.50 E |
|        |                                     | 18° 53'.75 S | 146° 40'.18 E |

|        |  |             |              |
|--------|--|-------------|--------------|
| Delete | firing practice area limit, centred on | 18° 56'.0 S | 146° 38'.0 E |
|--------|--|-------------|--------------|

**908 AUSTRALIA - QUEENSLAND - Hervey Bay to Shoalwater Bay - Firing practice area**  
Commonwealth of Australia

*On certain copies only*

**Aus 243 [903/2018]**

|        |                                     |              |               |
|--------|-------------------------------------|--------------|---------------|
| Insert | firing practice area limit, between | 24° 31'.71 S | 152° 20'.00 E |
|        |                                     | 24° 40'.91 S | 152° 34'.06 E |
|        |                                     | 24° 38'.10 S | 152° 39'.25 E |

**Aus 367 [906/2018]**

|        |   |             |              |
|--------|---|-------------|--------------|
| Insert | accompanying note   | 21° 40'.0 S | 152° 45'.0 E |
|        | magenta legend, <i>Shoalwater Bay Military Exercise Area (see Note)</i> | 22° 24'.4 S | 150° 22'.5 E |

**Aus 490 [906/2018]**

|        |   |              |               |
|--------|---|--------------|---------------|
| Insert | firing practice area limit, between                                     | 22° 12'.63 S | 150° 34'.00 E |
|        |   | 22° 20'.00 S | 150° 45'.03 E |
|        |   | 22° 40'.47 S | 150° 55'.02 E |
|        |   | 22° 47'.04 S | 150° 53'.21 E |
|        |   | 22° 46'.47 S | 150° 48'.47 E |
|        | magenta legend, <i>Shoalwater Bay Military Exercise Area (see Note)</i> | 22° 39'.5 S  | 150° 51'.5 E  |

|         |   |              |               |
|---------|---|--------------|---------------|
| Replace | Military Exercise Area note, with accompanying note | 23° 57'.07 S | 151° 13'.25 E |
|---------|---|--------------|---------------|

**Aus 817 [337/2016]**

|        |                                     |              |               |
|--------|-------------------------------------|--------------|---------------|
| Insert | firing practice area limit, between | 24° 34'.20 S | 152° 23'.80 E |
|        |                                     | 24° 40'.91 S | 152° 34'.06 E |
|        |                                     | 24° 27'.91 S | 152° 58'.06 E |
|        |                                     | 24° 25'.00 S | 152° 53'.45 E |

|        |  |             |              |
|--------|--|-------------|--------------|
| Delete | firing practice area limit, centred on | 24° 30'.0 S | 152° 38'.0 E |
|--------|--|-------------|--------------|

**Aus 818 [903/2018]**

|        |                                     |              |               |
|--------|-------------------------------------|--------------|---------------|
| Insert | firing practice area limit, between | 24° 23'.91 S | 152° 08'.06 E |
|        |                                     | 24° 10'.91 S | 152° 31'.06 E |
|        |                                     | 24° 27'.91 S | 152° 58'.06 E |
|        |                                     | 24° 40'.91 S | 152° 34'.06 E |
|        |                                     | 24° 23'.91 S | 152° 08'.06 E |

|        |  |             |              |
|--------|--|-------------|--------------|
| Delete | firing practice area limit, centred on | 24° 26'.0 S | 152° 30'.0 E |
|--------|--|-------------|--------------|

**Aus 820 [239/2018]**

|        |                                     |              |               |
|--------|-------------------------------------|--------------|---------------|
| Insert | firing practice area limit, between | 22° 40'.47 S | 150° 55'.02 E |
|        |                                     | 22° 23'.50 S | 150° 46'.73 E |

|        |                                     |             |              |
|--------|-------------------------------------|-------------|--------------|
| Delete | firing practice area limit, between | 22° 40'.5 S | 150° 55'.0 E |
|        |                                     | 22° 23'.5 S | 150° 46'.9 E |

**909 AUSTRALIA - QUEENSLAND - Laguna Quays - Corner co-ordinates**  
Australian Hydrographic Office

**Aus 252 (Laguna Quays) [436/2018]**

|       |                            |              |               |
|-------|----------------------------|--------------|---------------|
| Amend | latitude to 20° 36' 40"S   | 20° 36'.39 S | 148° 40'.75 E |
|       | longitude to 148° 40' 70"E | 20° 36'.36 S | 148° 40'.71 E |
|       | latitude to 20° 35' 80"S   | 20° 35'.81 S | 148° 41'.59 E |

**910 AUSTRALIA - QUEENSLAND - Weipa - Wreck salvaged**  
Maritime Safety Queensland

**Aus 4 (Port of Weipa) [858/2018]**

|        |   |              |               |
|--------|---|--------------|---------------|
| Delete | depth, 20 <sub>1</sub> m, and enclosing danger circle with legend, Wk | 12° 40'.04 S | 141° 50'.70 E |
|--------|---|--------------|---------------|

**911 AUSTRALIA - CORAL SEA - Elizabeth Reef to Middleton Reef - Historic wrecks**

Australian Hydrographic Office

**Aus 618 (Middleton Reef) [238/2018]**

|        |   |               |                |
|--------|---|---------------|----------------|
| Insert | magenta legend, <i>Historic Wk (see Note)</i> | 29° 26'.720 S | 159° 05'.902 E |
|        | insert accompanying note in N border          | 29° 22'.433 S | 159° 11'.000 E |

|         |  |              |               |
|---------|--|--------------|---------------|
| Replace | stranded wreck with #, with magenta legend <i>Historic Wk (see Note)</i> | 29° 28'.91 S | 159° 04'.23 E |
|---------|--|--------------|---------------|

**Aus 618 (Elizabeth Reef) [238/2018]**

|        |                |               |                |
|--------|----------------|---------------|----------------|
| Insert | stranded wreck | 29° 55'.438 S | 159° 05'.448 E |
|--------|----------------|---------------|----------------|

|         |   |              |               |
|---------|---|--------------|---------------|
| Replace | dangerous wreck with #, with magenta legend <i>Historic Wk (see Note)</i> | 29° 58'.85 S | 159° 07'.02 E |
|---------|---|--------------|---------------|

**912 PAPUA NEW GUINEA - Walis Island - Light amended**

National Maritime Safety Authority PNG

**Aus 389 [443/2016]**

|       |                                |            |              |
|-------|--------------------------------|------------|--------------|
| Amend | light to <i>Fl(2)6s 8m 10M</i> | 3° 14'.6 S | 143° 18'.2 E |
|-------|--------------------------------|------------|--------------|

**Aus 4622 (INT 622) [854/2018]**

|       |                          |            |              |
|-------|--------------------------|------------|--------------|
| Amend | light to <i>Fl(2)10M</i> | 3° 14'.6 S | 143° 18'.2 E |
|-------|--------------------------|------------|--------------|

**913 AUSTRALIA - NORTHERN TERRITORY - Haul Round Island - Light amended**

Australian Maritime Safety Authority

**Aus 17 [NE 27/7/2018]**

|       |                               |             |              |
|-------|-------------------------------|-------------|--------------|
| Amend | light elevation to <i>11m</i> | 11° 53'.4 S | 134° 12'.7 E |
|-------|-------------------------------|-------------|--------------|

**914 AUSTRALIA - NORTHERN TERRITORY - Wessel Islands - Stevens Island - Light**

Australian Maritime Safety Authority Final ATH 4/2018

**Aus 716 [994/2010]**

|       |                               |             |              |
|-------|-------------------------------|-------------|--------------|
| Amend | light elevation to <i>17m</i> | 11° 32'.7 S | 136° 07'.3 E |
|-------|-------------------------------|-------------|--------------|

**915 AUSTRALIA - WESTERN AUSTRALIA - Beaumont Island to Round Island - Depths**

LADS Flight

**Aus 119 (Approaches to Goose Island Bay) [522/2018]**

|        |   |              |               |
|--------|---|--------------|---------------|
| Insert | depth, <i>10<sub>9</sub>m</i> , enclosed by contour | 34° 02'.34 S | 123° 11'.15 E |
|--------|---|--------------|---------------|

**Aus 763 [1247/2016]**

|        |   |              |               |
|--------|---|--------------|---------------|
| Insert | depth, <i>11<sub>6</sub>m</i> , enclosed by contour | 34° 04'.14 S | 122° 31'.16 E |
|--------|---|--------------|---------------|

|  |   |              |               |
|--|---|--------------|---------------|
|  | depth, <i>10<sub>9</sub>m</i> , enclosed by contour | 34° 02'.34 S | 123° 11'.15 E |
|--|---|--------------|---------------|

**Aus 4727 (INT 727) [624/2018]**

|        |   |             |              |
|--------|---|-------------|--------------|
| Insert | depth, <i>24<sub>2</sub>m</i> , enclosed by contour | 33° 57'.4 S | 123° 53'.6 E |
|--------|---|-------------|--------------|

**916 AUSTRALIA - WESTERN AUSTRALIA - Broome - Entrance Point - Depth**

Kimberley Ports Authority

**Aus 50 [675/2018]**

|         |  |             |              |
|---------|--|-------------|--------------|
| Replace | depth, <i>8<sub>8</sub>m</i> , with depth, <i>8<sub>4</sub>m</i> | 18° 00'.8 S | 122° 12'.7 E |
|---------|--|-------------|--------------|

**Aus 51 [NE 28/7/2017]**

|         |  |              |               |
|---------|--|--------------|---------------|
| Replace | depth, <i>8<sub>8</sub>m</i> , with depth, <i>8<sub>4</sub>m</i> | 18° 00'.76 S | 122° 12'.69 E |
|---------|--|--------------|---------------|

**917 AUSTRALIA - WESTERN AUSTRALIA - Cockburn Sound - Nav aids**

Fremantle Ports

**Aus 114 [1016/2017]**

|         |  |              |               |
|---------|--|--------------|---------------|
| Replace | light beacon with, west cardinal pillar light buoy, Q(9) 15s, with topmark | 32° 13'.27 S | 115° 44'.95 E |
|---------|--|--------------|---------------|

**Aus 117 [59/2018]**

|         |  |              |               |
|---------|--|--------------|---------------|
| Replace | light beacon with, west cardinal pillar light buoy, Q(9) 15s, with topmark | 32° 13'.27 S | 115° 44'.95 E |
|---------|--|--------------|---------------|

|      |      |               |                |
|------|------|---------------|----------------|
| Move | buoy | 32° 16'.40 S  | 115° 43'.22 E  |
|      | to   | 32° 16'.414 S | 115° 43'.260 E |

|        |                     |              |               |
|--------|---------------------|--------------|---------------|
| Delete | structure colour, G | 32° 16'.18 S | 115° 41'.91 E |
|--------|---------------------|--------------|---------------|

**918 AUSTRALIA - SOUTH AUSTRALIA - Whyalla - Pilot boarding place; port limits**

Flinders Ports

**Aus 778 [862/2018]**

|        |                    |             |              |
|--------|--------------------|-------------|--------------|
| Insert | accompanying block | 33° 04'.0 S | 137° 45'.0 E |
|--------|--------------------|-------------|--------------|

**919 AUSTRALIA - TASMANIA - Port Latta - ZOC diagram; depths**

HydroSurvey Australia

**Aus 178 (Wynyard) [627/2018]**

|        |                                      |             |              |
|--------|--------------------------------------|-------------|--------------|
| Insert | accompanying ZOC diagram in S border | 40° 59'.4 S | 145° 45'.2 E |
|--------|--------------------------------------|-------------|--------------|

**Aus 178 (Port Latta) [627/2018]**

|        |                          |               |                |
|--------|--------------------------|---------------|----------------|
| Insert | depth, 15 <sub>7</sub> m | 40° 50'.091 S | 145° 23'.844 E |
|--------|--------------------------|---------------|----------------|

|        |                          |              |               |
|--------|--------------------------|--------------|---------------|
| Delete | depth, 17m               | 40° 50'.06 S | 145° 23'.87 E |
|        | depth, 15 <sub>8</sub> m | 40° 50'.17 S | 145° 23'.86 E |

**920 SOLOMON ISLANDS - Hathorn Sound to Ghizo Island - Nav aids**  
Solomon Islands Maritime Safety Administration

**SLB 102 (Gizo Harbour and Approaches) [NE 1/6/2018]**

|        |                                       |              |                |
|--------|---------------------------------------|--------------|----------------|
| Insert | beacon with port lateral topmark      | 8° 06'.499 S | 156° 51'.027 E |
|        | beacon with port lateral topmark      | 8° 06'.313 S | 156° 50'.933 E |
|        | beacon without topmark                | 8° 03'.744 S | 156° 50'.262 E |
|        | beacon with port lateral topmark      | 8° 05'.560 S | 156° 51'.539 E |
|        | beacon with starboard lateral topmark | 8° 07'.259 S | 156° 53'.760 E |
|        | beacon with starboard lateral topmark | 8° 07'.202 S | 156° 53'.705 E |
|        | beacon with port lateral topmark      | 8° 07'.002 S | 156° 53'.733 E |
|        | beacon with port lateral topmark      | 8° 06'.778 S | 156° 53'.373 E |
|        | beacon with starboard lateral topmark | 8° 06'.261 S | 156° 53'.310 E |
|        | beacon with port lateral topmark      | 8° 06'.122 S | 156° 51'.292 E |
|        | beacon with starboard lateral topmark | 8° 06'.049 S | 156° 51'.230 E |
| Move   | beacon                                | 8° 04'.17 S  | 156° 50'.35 E  |
|        | to                                    | 8° 04'.153 S | 156° 50'.382 E |
|        | beacon                                | 8° 04'.71 S  | 156° 50'.51 E  |
|        | to                                    | 8° 04'.738 S | 156° 50'.519 E |
|        | beacon                                | 8° 05'.54 S  | 156° 52'.18 E  |
|        | to                                    | 8° 05'.535 S | 156° 52'.206 E |
|        | beacon                                | 8° 06'.39 S  | 156° 51'.89 E  |
| Delete | to                                    | 8° 06'.382 S | 156° 51'.865 E |
|        | beacon                                | 8° 06'.45 S  | 156° 51'.00 E  |
|        | beacon                                | 8° 06'.38 S  | 156° 50'.98 E  |
|        | depth, 3 <sub>4</sub> m               | 8° 06'.29 S  | 156° 50'.92 E  |
|        | beacon                                | 8° 04'.03 S  | 156° 50'.24 E  |
|        | structure colour, RW                  | 8° 05'.57 S  | 156° 52'.69 E  |
|        | beacon                                | 8° 05'.55 S  | 156° 51'.84 E  |
|        | beacon                                | 8° 05'.59 S  | 156° 51'.54 E  |
|        | structure colour, BRB                 | 8° 06'.22 S  | 156° 51'.48 E  |
|        | beacon                                | 8° 06'.16 S  | 156° 51'.28 E  |
|        | beacon                                | 8° 06'.03 S  | 156° 51'.24 E  |
|        | rock                                  | 8° 06'.76 S  | 156° 53'.38 E  |

**SLB 102 (Ringgi Cove) [NE 1/6/2018]**

|        |                                       |              |                |
|--------|---------------------------------------|--------------|----------------|
| Insert | beacon with port lateral topmark      | 8° 07'.638 S | 157° 06'.328 E |
|        | beacon with starboard lateral topmark | 8° 07'.466 S | 157° 06'.517 E |
|        | beacon with port lateral topmark      | 8° 07'.318 S | 157° 06'.390 E |
|        | beacon with port lateral topmark      | 8° 07'.179 S | 157° 06'.679 E |
| Delete | depth, 25m                            | 8° 07'.18 S  | 157° 06'.67 E  |
|        | depth, 5 <sub>7</sub> m               | 8° 07'.18 S  | 157° 06'.69 E  |

**SLB 102 (Port Noro) [NE 1/6/2018]**

|         |  |             |               |
|---------|--|-------------|---------------|
| Replace | beacon with beacon, with starboard lateral topmark | 8° 15'.58 S | 157° 11'.64 E |
|---------|--|-------------|---------------|

**SLB 102 (Blackett Strait) [NE 1/6/2018]**

|        |                           |             |               |
|--------|---------------------------|-------------|---------------|
| Insert | starboard lateral topmark | 8° 15'.58 S | 157° 11'.64 E |
|--------|---------------------------|-------------|---------------|

**SLB 302 [249/2018]**

|        |        |            |              |
|--------|--------|------------|--------------|
| Delete | beacon | 8° 20'.6 S | 157° 14'.1 E |
|--------|--------|------------|--------------|

**921 SOLOMON ISLANDS - Malaita Island - Uru Harbour to Bina Harbour - Nav aids**

Solomon Islands Maritime Safety Administration

**SLB 104 (Auki Harbour) [20/2018]**

|         |  |              |                |
|---------|--|--------------|----------------|
| Insert  | beacon, with port lateral topmark                  | 8° 46'.695 S | 160° 41'.560 E |
|         | beacon, with starboard lateral topmark             | 8° 47'.025 S | 160° 41'.894 E |
|         | beacon, with port lateral topmark                  | 8° 47'.177 S | 160° 41'.914 E |
| Replace | beacon with beacon, with starboard lateral topmark | 8° 46'.85 S  | 160° 41'.88 E  |
|         | beacon with beacon, with starboard lateral topmark | 8° 47'.24 S  | 160° 42'.00 E  |
| Delete  | beacon   | 8° 46'.99 S  | 160° 41'.88 E  |
|         | depth, 1 <sub>8</sub> m                            | 8° 47'.03 S  | 160° 41'.89 E  |
|         | beacon   | 8° 47'.17 S  | 160° 41'.89 E  |
|         | depth, 3 <sub>4</sub> m                            | 8° 47'.18 S  | 160° 41'.92 E  |
|         |  |              |                |

**SLB 104 (Kwakwaru Harbour) [20/2018]**

|        |                                       |              |                |
|--------|---------------------------------------|--------------|----------------|
| Insert | beacon with starboard lateral topmark | 8° 45'.786 S | 160° 56'.821 E |
|        | beacon with starboard lateral topmark | 8° 45'.750 S | 160° 56'.698 E |
|        | beacon                                | 8° 45'.670 S | 160° 56'.618 E |
|        | beacon                                | 8° 45'.451 S | 160° 56'.669 E |
|        | beacon with port lateral topmark      | 8° 45'.402 S | 160° 56'.582 E |
| Delete | beacon                                | 8° 45'.78 S  | 160° 56'.85 E  |
|        | beacon                                | 8° 45'.75 S  | 160° 56'.69 E  |
|        | depth, 3 <sub>4</sub> m               | 8° 45'.75 S  | 160° 56'.69 E  |
|        | beacon                                | 8° 45'.68 S  | 160° 56'.61 E  |
|        | beacon                                | 8° 45'.47 S  | 160° 56'.59 E  |
|        | beacon                                | 8° 45'.44 S  | 160° 56'.66 E  |
|        | depth, 0 <sub>3</sub> m               | 8° 45'.40 S  | 160° 56'.58 E  |

**SLB 104 (Bina Harbour) [20/2018]**

|        |  |              |                |
|--------|--|--------------|----------------|
| Insert | beacon, with starboard lateral topmark | 8° 53'.879 S | 160° 44'.514 E |
|        | beacon, with port lateral topmark      | 8° 53'.676 S | 160° 44'.485 E |
|        | beacon, with starboard lateral topmark | 8° 53'.182 S | 160° 44'.580 E |
|        | beacon, with port lateral topmark      | 8° 52'.871 S | 160° 44'.629 E |
|        | beacon, with starboard lateral topmark | 8° 52'.816 S | 160° 44'.504 E |
|        | beacon, with starboard lateral topmark | 8° 55'.985 S | 160° 44'.833 E |
|        | beacon, with port lateral topmark      | 8° 56'.070 S | 160° 44'.798 E |
| Delete | structure colour and name No34         | 8° 54'.95 S  | 160° 44'.67 E  |
|        | beacon                                 | 8° 53'.86 S  | 160° 44'.50 E  |
|        | beacon                                 | 8° 53'.64 S  | 160° 44'.48 E  |
|        | depth, 0 <sub>9</sub> m                | 8° 53'.66 S  | 160° 44'.48 E  |
|        | beacon                                 | 8° 52'.85 S  | 160° 44'.63 E  |
|        | beacon                                 | 8° 52'.76 S  | 160° 44'.50 E  |
|        | beacon                                 | 8° 55'.96 S  | 160° 44'.84 E  |
|        | structure colour and name No37         | 8° 56'.06 S  | 160° 44'.86 E  |
|        | beacon                                 | 8° 56'.04 S  | 160° 44'.79 E  |
|        | depth, 2 <sub>1</sub> m                | 8° 56'.08 S  | 160° 44'.80 E  |
|        | structure colour and name No38         | 8° 56'.69 S  | 160° 45'.03 E  |

**SLB 104 (Kwai Harbour to Uru Island Anchorage) [20/2018]**

|         |                                       |             |               |
|---------|---------------------------------------|-------------|---------------|
| Insert  | beacon with port lateral topmark      | 8° 46'.10 S | 160° 56'.07 E |
|         | beacon with port lateral topmark      | 8° 47'.34 S | 160° 56'.66 E |
|         | beacon with port lateral topmark      | 8° 47'.58 S | 160° 56'.40 E |
|         | beacon with starboard lateral topmark | 8° 46'.33 S | 160° 56'.16 E |
|         | beacon with port lateral topmark      | 8° 48'.44 S | 160° 57'.02 E |
|         | beacon with starboard lateral topmark | 8° 47'.60 S | 160° 56'.55 E |
|         | beacon with port lateral topmark      | 8° 50'.72 S | 160° 59'.45 E |
|         | beacon with starboard lateral topmark | 8° 51'.10 S | 160° 59'.37 E |
|         | beacon with spherical topmark         | 8° 51'.54 S | 160° 59'.65 E |
|         | beacon with starboard lateral topmark | 8° 51'.80 S | 161° 00'.08 E |
| Replace | beacon with beacon without topmark    | 8° 46'.2 S  | 160° 56'.2 E  |
| Delete  | depth, 9 <sub>5</sub> m               | 8° 46'.1 S  | 160° 56'.1 E  |
|         | beacon                                | 8° 47'.6 S  | 160° 56'.4 E  |

|            |  |            |              |
|------------|--|------------|--------------|
| <b>921</b> | <b>SOLOMON ISLANDS - Malaita Island - Uru Harbour to Bina Harbour - Nav aids</b> |            |              |
|            | rock   | 8° 46'.4 S | 160° 56'.2 E |
|            | depth, 3 <sub>6</sub> m  | 8° 51'.1 S | 160° 59'.3 E |
|            | beacon   | 8° 51'.1 S | 160° 59'.2 E |
|            | depth, 1 <sub>2</sub> m  | 8° 51'.5 S | 160° 59'.7 E |
|            | structure colour, BW   | 8° 51'.6 S | 160° 59'.7 E |
|            | structure colour and name No11   | 8° 46'.3 S | 160° 56'.5 E |
|            | structure colour and name No16   | 8° 50'.6 S | 160° 59'.8 E |
|            | structure colour and name No17   | 8° 50'.6 S | 160° 59'.4 E |
|            | structure colour and name No20   | 8° 51'.3 S | 160° 59'.3 E |
|            | structure colour and name No21   | 8° 51'.5 S | 160° 59'.2 E |

**922 SOLOMON ISLANDS - New Georgia Island - Viru Harbour - Beacon**

Solomon Islands Maritime Safety Administration

**SLB 103 (Viru Harbour) [825/2018]**

|        |                                   |              |                |
|--------|-----------------------------------|--------------|----------------|
| Insert | beacon, with port lateral topmark | 8° 30'.062 S | 157° 43'.823 E |
|--------|-----------------------------------|--------------|----------------|

**923 SOLOMON ISLANDS - San Christobal Island to Santa Isabel Island - Chart notes**

Australian Hydrographic Office

**SLB 201 [825/2018]**

|        |                   |            |              |
|--------|-------------------|------------|--------------|
| Insert | accompanying note | 9° 30'.0 S | 159° 59'.0 E |
|--------|-------------------|------------|--------------|

**SLB 303 [322/2018]**

|        |                   |            |              |
|--------|-------------------|------------|--------------|
| Insert | accompanying note | 7° 42'.5 S | 159° 49'.0 E |
|--------|-------------------|------------|--------------|

**SLB 304 [322/2018]**

|        |                   |             |              |
|--------|-------------------|-------------|--------------|
| Insert | accompanying note | 10° 12'.0 S | 160° 07'.0 E |
|--------|-------------------|-------------|--------------|

**SLB 305 [23/2018]**

|        |                   |            |              |
|--------|-------------------|------------|--------------|
| Insert | accompanying note | 9° 01'.0 S | 162° 15'.0 E |
|--------|-------------------|------------|--------------|



**924(T)/2018 AUSTRALIA - QUEENSLAND - Boyne River to Gladstone - Dredging operations completed**

*Former Notice* - 159(T)/2018 is cancelled  
Maritime Safety Queensland Notice 413/2018

Cancel this notice on receipt.

**Chart formerly affected - Aus 244 - Aus 245 - Aus 246 - Aus 271**

**925(T)/2018 AUSTRALIA - QUEENSLAND - Hay Point - Obstruction removed**

*Former Notice* - 292(T)/2017 is cancelled  
Maritime Safety Queensland

Cancel this notice on receipt.

**Chart formerly affected - Aus 249 - Aus 823**

**926(T)/2018 AUSTRALIA - QUEENSLAND - Hayman Island - The Narrows - Light beacon unlit**

Maritime Safety Queensland Notice 396(T)/2018, HMAS *Newcastle*

The light beacon, *Fl.G.2-5s* (20° 04'.32 S 148° 53'.81 E), is unlit.

**Chart temporarily affected - Aus 252 - Aus 254**

**927(T)/2018 AUSTRALIA - QUEENSLAND - Magnetic Island - Nelly Bay - Shoaling charted**

*Former Notice* - 919(P)/2017 is cancelled  
Maritime Safety Queensland

Cancel this notice on receipt.

**Chart formerly affected - Aus 256**

**928(T)/2018 AUSTRALIA - QUEENSLAND - Moreton Bay - Manly Boat Harbour - Dredging operations**

Maritime Safety Queensland Notice 409(T)/2018

The barges *IBIS II* and *DB1* and support vessels are conducting dredging operations in Manly Boat Harbour (27° 27'.56 S 153° 11'.38 E).

The barges will monitor VHF Ch 12,13 and 16.

Mariners are advised to navigate with caution in the area.

**Chart temporarily affected - Aus 236**

**929(T)/2018 AUSTRALIA - QUEENSLAND - Rattlesnake Island - Live firing**

Maritime Safety Queensland Notice 412(T)/2018

Live firing activities will be conducted within a 5M radius of position 19° 02'.45 S 146° 36'.72 E from 29 October to 30 October 2018.

Mariners are advised to navigate with caution in the area.

**Chart temporarily affected - Aus 256 - Aus 827**

**930(T)/2018 AUSTRALIA - QUEENSLAND - Shoalwater Bay - Live firing**

Maritime Safety Queensland Notice 366(T)/2018

Live firing will be conducted in the Shoalwater Bay training area during the period 26 October 2018 to 10 November 2018.

A marine danger area extends to all internal waters bounded by the following positions:

22° 32'.22 S 150° 47'.36 E  
 22° 29'.13 S 150° 49'.71 E  
 22° 39'.85 S 150° 54'.71 E  
 22° 41'.14 S 150° 50'.17 E  
 22° 37'.35 S 150° 44'.31 E.

All waters, creeks, beaches and other areas within the declared marine danger area are not available for access.

There will be a safe anchorage available at Freshwater, Port Clinton, West Water Port Clinton, South Arm Port Clinton, Pearl Bay, Island Head Creek and Supply Bay Townshend Island.

Mariners are advised to keep clear of this area throughout the above times.

**Chart temporarily affected - Aus 248 - Aus 260 - Aus 367 - Aus 490 - Aus 820 - Aus 822**

**931(T)/2018 AUSTRALIA - QUEENSLAND - Shoalwater Bay - Live firing**

Maritime Safety Queensland Notice 367(T)/2018

Live firing will be conducted in the Shoalwater Bay training area during the period 4 to 8 November 2018.

A marine danger area extends to all internal waters bounded by the following positions:

22° 24'.33 S 150° 26'.87 E  
 22° 18'.98 S 150° 33'.98 E  
 22° 16'.19 S 150° 39'.47 E  
 22° 10'.02 S 150° 20'.06 E  
 22° 14'.92 S 150° 26'.87 E.

All waters, creeks, beaches and other areas within the declared marine danger area are not available for access.

There will be a safe anchorage available at Freshwater, Port Clinton, West Water Port Clinton, South Arm Port Clinton, Pearl Bay and Island Head Creek.

Mariners are advised to keep clear of this area throughout the above times.

**Chart temporarily affected - Aus 260 - Aus 261 - Aus 822**

**932(T)/2018 AUSTRALIA - QUEENSLAND - Shoalwater Bay - Live firing**

Maritime Safety Queensland Notice 368(T)/2018

Live firing will be conducted in the Shoalwater Bay training area during the period 4 to 8 November 2018.

A marine danger area extends to all internal waters bounded by the following positions:

22° 13'.55 S 150° 35'.53 E  
 22° 06'.10 S 150° 41'.18 E  
 22° 06'.05 S 150° 45'.07 E  
 22° 19'.38 S 150° 49'.46 E  
 22° 16'.35 S 150° 38'.10 E.

All waters, creeks, beaches and other areas within the declared marine danger area are not available for access.

There will be a safe anchorage available at Freshwater, Port Clinton, West Water Port Clinton, South Arm Port Clinton, Pearl Bay and Island Head Creek.

Mariners are advised to keep clear of this area throughout the above times.

**Chart temporarily affected - Aus 260 - Aus 822**

**933(T)/2018 AUSTRALIA - QUEENSLAND - Townsville - West Channel - Light beacon restored**

Former Notice - 926(T)/2017 is cancelled  
Maritime Safety Queensland

Cancel this notice on receipt.

**Chart formerly affected - Aus 256 - Aus 827**

**934(P)/2018 AUSTRALIA - CORAL SEA - Herald Cays - Shoaling**

LADS Flight

Latest survey shows shoaler depths than those charted may exist in an area bounded by the following positions:

16° 56'.81 S 149° 11'.03 E  
16° 56'.18 S 149° 12'.15 E  
16° 55'.38 S 149° 12'.19 E  
16° 55'.13 S 149° 11'.82 E  
16° 56'.39 S 149° 10'.44 E  
19° 56'.81 S 149° 11'.03 E.

Mariners are advised to navigate with caution in the area.

Charts will be updated in due course.

**Chart which will be affected - Aus 616**

**935(T)/2018 PAPUA NEW GUINEA - Cap Ward Hunt to Cape Cretin - Seismic survey**

Australian Maritime Safety Authority NAVX 69/2018

MV *BGP Explorer* is conducting seismic survey operations in an area bounded by the following positions:

8° 04'.0 S 149° 00'.0 E  
8° 04'.0 S 147° 50'.0 E  
6° 40'.0 S 147° 50'.0 E  
6° 40'.0 S 149° 00'.0 E.

Mariners are advised to navigate with caution in the area. 5M clearance requested.

**Chart temporarily affected - Aus 386 - Aus 520 - Aus 521 - Aus 522 - Aus 523 - Aus 4620 (INT 620) - Aus 4621 (INT 621) - Aus 4622 (INT 622)**

**936(T)/2018 PAPUA NEW GUINEA - Cape Nelson - Lights unlit**

National Maritime Safety Authority PNG Warning 16/2018

The following lights are unlit;

| Position                  | Remarks           |
|---------------------------|-------------------|
| 8° 59'.50 S 149° 08'.28 E | Fl.6s 19m 10M     |
| 9° 02'.41 S 149° 18'.89 E | Fl(2) 6s 20m 9M   |
| 9° 12'.00 S 149° 26'.75 E | Fl.10s 9m 10M     |
| 9° 10'.84 S 149° 27'.08 E | Fl(3) 12s 11m 10M |

**Chart temporarily affected - Aus 519 - Aus 520 - Aus 4604 (INT 604) - Aus 4620 (INT 620) - Aus 4621 (INT 621)**

**937(T)/2018 AUSTRALIA - WESTERN AUSTRALIA - Direction Bank - Wave glider recovered**

Former Notice - 791(T)/2018 is cancelled  
Australian Maritime Safety Authority

Cancel this notice on receipt.

**Chart formerly affected - Aus 754**

**938(T)/2018 AUSTRALIA - WESTERN AUSTRALIA - Muiron Islands - Subsea operations; pipeline operations**  
*Former Notice - 746(T)/2018 is cancelled*  
 Technip FMC

Vessel *Deep North Sea Atlantic* is conducting subsea and pipeline operations in the vicinity of position 21° 25'.75 S 114° 05'.07 E.

**Chart temporarily affected - Aus 328 - Aus 329 - Aus 744**

**939(T)/2018 AUSTRALIA - WESTERN AUSTRALIA - Muiron Islands - Mooring buoy northwestwards**  
 Deep Sea Mooring , Australian Maritime Safety Authority Auscoast Warning 240/2018

A yellow mooring buoy, *Fl.3s*, exists in position 21° 22'.01 S 114° 03'.76 E.

**Chart temporarily affected - Aus 328 - Aus 329 - Aus 744**

**940(T)/2018 AUSTRALIA - WESTERN AUSTRALIA - North West Cape - Drill rig northwestwards**  
*Former Notice - 793(T)/2018 is cancelled*  
 Australian Maritime Safety Authority Auscoast Warning 232/2018

Drill rig *Ensco DPS-1* is conducting drilling operations in position 21° 26'.45 S 113° 58'.00 E.

**Chart temporarily affected - Aus 328 - Aus 329 - Aus 4723 (INT 723) - Aus 4725 (INT 725)**

**941(T)/2018 AUSTRALIA - WESTERN AUSTRALIA - North West Cape - Drill rig northwestwards**  
*Former Notice - 886(T)/2018 is cancelled*  
 MODU *ENSCO 107*

Drill rig *Ensco 107* is conducting drilling operations in position 20° 43'.82 S 114° 59'.40 E.

**Chart temporarily affected - Aus 328 - Aus 4723 (INT 723) - Aus 4725 (INT 725)**

**942(T)/2018 AUSTRALIA - WESTERN AUSTRALIA - Rankin Bank - Subsea operations completed**  
*Former Notice - 588(T)/2018 is cancelled*  
 Subsea 7

Cancel this notice on receipt.

**Chart formerly affected - Aus 327 - Aus 4723 (INT 723)**

**943(T)/2018 AUSTRALIA - WESTERN AUSTRALIA - Sahul Banks - Subsea operations southwards**  
 Subsea 7

MSV *Skandi Acergy* is conducting subsea and pipeline operations in the vicinity of position 11° 04'.19 S 126° 36'.76 E.

Mariners are advised to navigate with caution in the area.

**Chart temporarily affected - Aus 312 - Aus 4721 (INT 721)**

**944(T)/2018 AUSTRALIA - WESTERN AUSTRALIA - Scarborough - Subsea operations westwards completed**  
*Former Notice - 888(T)/2018 is cancelled*  
 Australian Maritime Safety Authority

Cancel this notice on receipt.

**Chart formerly affected - Aus 112 - Aus 754**

II

**HYDROGRAPHIC REPORTS**

NIL

### III

#### **NAVIGATION WARNINGS**

The Australian Hydrographic Office will no longer compile Section III of the Australian Notices to Mariners. For the most up to date navigation warnings please refer to:

AMSA Navigation Warnings

<http://amsa.gov.au/search-and-rescue/distress-and-safety-comms/msi/msi-email/index.asp>

New Zealand Notices to Mariners (Navarea XIV warnings)

<http://www.linz.govt.nz/sea/maritime-safety/notices-mariners>

*To accompany Australian Notice to Mariners 897/2018*

**HISTORIC WRECK**

The site of an historic wreck is protected from unauthorised interference. For details see Seafarers Handbook for Australian Waters AHP 20.

*Note for chart Aus 191*

*To accompany Australian Notice to Mariners 908/2018*

**SHOALWATER BAY MILITARY EXERCISE AREA**

The waters within the area are closed to public access during the conduct of Defence exercises, closure will be advised by Notice to Mariners. However, all creeks within the area are permanently closed to public access. Shelter from storm or tempest may still be sought at Freshwater Bay, Port Clinton and Pearl Bay.

*Note for chart Aus 490*

*To accompany Australian Notice to Mariners 923/2018*

**AIDS TO NAVIGATION**

Many beacons situated within lagoons and inner channels have been omitted from this chart by reason of scale. Channels are marked by beacons in accordance with the Solomon Islands system. See also Pacific Islands Pilot Vol I NP 60.

*Note for chart SLB 201*

*To accompany Australian Notice to Mariners 923/2018*

**AIDS TO NAVIGATION**

Many beacons situated within lagoons and inner channels have been omitted from this chart by reason of scale. Channels are marked by beacons in accordance with the Solomon Islands system. See also Pacific Islands Pilot Vol I NP 60.

*Note for chart SLB 304*

*To accompany Australian Notice to Mariners 908/2018*

**SHOALWATER BAY MILITARY EXERCISE AREA**

The waters within the area are closed to public access during the conduct of Defence exercises, closure will be advised by Notice to Mariners. However, all creeks within the area are permanently closed to public access. Shelter from storm or tempest may still be sought at Freshwater Bay, Port Clinton and Pearl Bay.

*Note for chart Aus 367*

*To accompany Australian Notice to Mariners 911/2018*

**HISTORIC WRECK**

The site of an historic wreck is protected from unauthorised interference. For details see Seafarers Handbook for Australian Waters AHP 20.

*Note for chart Aus 618*

*To accompany Australian Notice to Mariners 923/2018*

**AIDS TO NAVIGATION**

Many beacons situated within lagoons and inner channels have been omitted from this chart by reason of scale. Channels are marked by beacons in accordance with the Solomon Islands system. See also Pacific Islands Pilot Vol I NP 60.

*Note for chart SLB 303*

*To accompany Australian Notice to Mariners 923/2018*

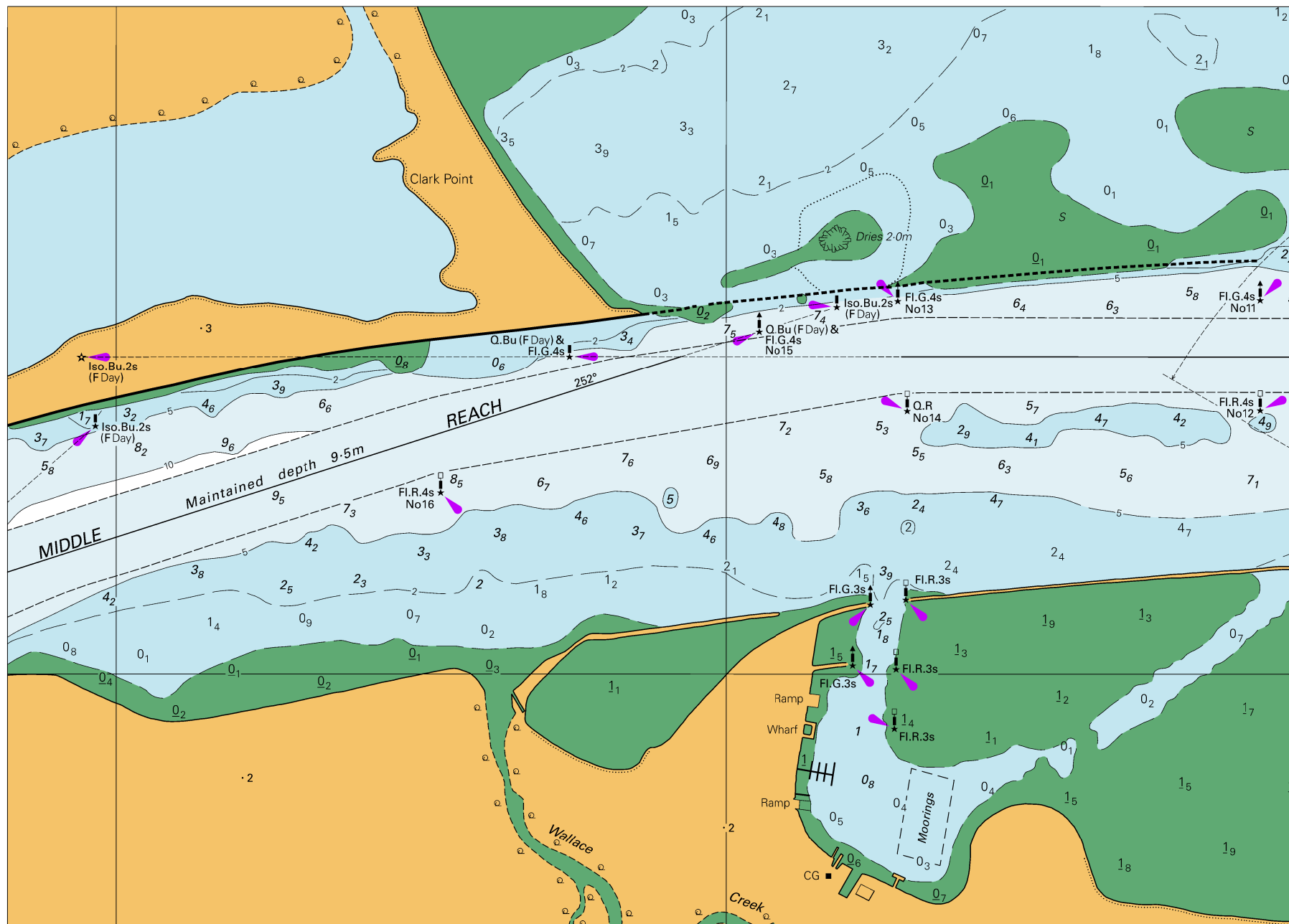
**AIDS TO NAVIGATION**

Many beacons situated within lagoons and inner channels have been omitted from this chart by reason of scale. Channels are marked by beacons in accordance with the Solomon Islands system. See also Pacific Islands Pilot Vol I NP 60.

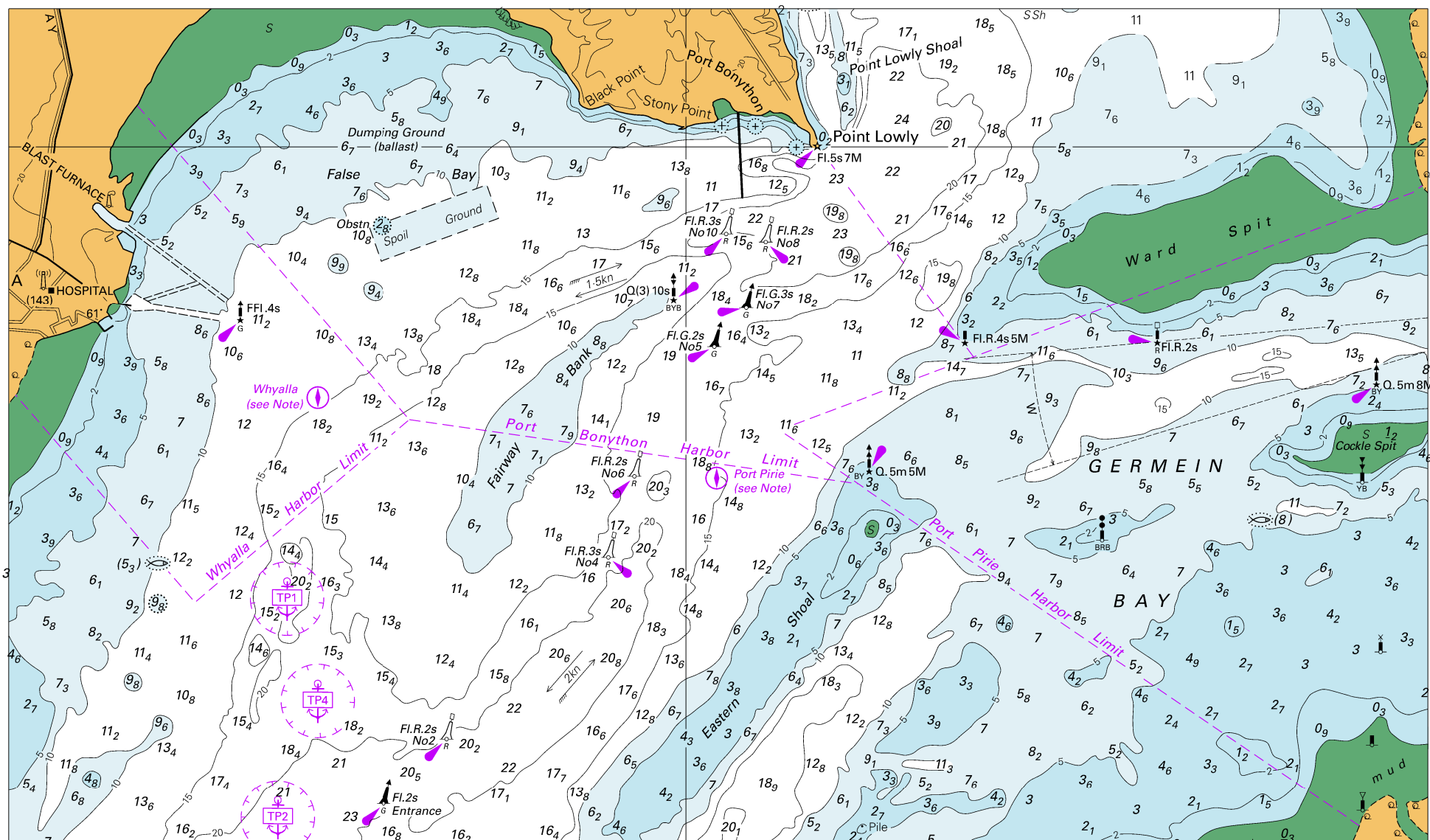
*Note for chart SLB 305*







*To accompany Australian Notice to Mariners 918/2018*

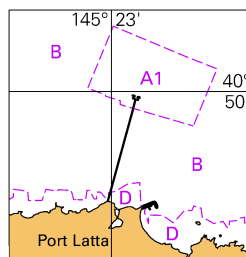


<sup>14</sup>  
*Block for Chart Aus 778*

© Commonwealth of Australia 2018

(254.5 x 149.5mm)

*To accompany Australian Notice to Mariners 919/2018*



© Commonwealth of Australia 2018  
*Block for Chart Aus 178* (32.0 x 33.0mm)