

To accompany Australian Notice to Mariners 312/2018

CABLE AREA

Vessels are warned not to anchor, trawl or sweep within the area on account of the existence of submarine cables.

Note for chart Aus 202

To accompany Australian Notice to Mariners 317/2018

DREDGED AREAS

Depths in dredged areas, although generally maintained, may be less than charted. For the latest information, consult the Harbour Master.

Note for chart Aus 26

To accompany Australian Notice to Mariners 317/2018

DREDGED AREAS

Depths in dredged areas, although generally maintained, may be less than charted. For the latest information, consult the Harbour Master.

Note for chart Aus 28

To accompany Australian Notice to Mariners 317/2018

DREDGED AREAS

Depths in dredged areas, although generally maintained, may be less than charted. For the latest information, consult the Harbour Master.

Note for chart Aus 13

To accompany Australian Notice to Mariners 317/2018

DREDGED AREAS

Depths in dredged areas, although generally maintained, may be less than charted. For the latest information, consult the Harbour Master.

Note for chart Aus 27

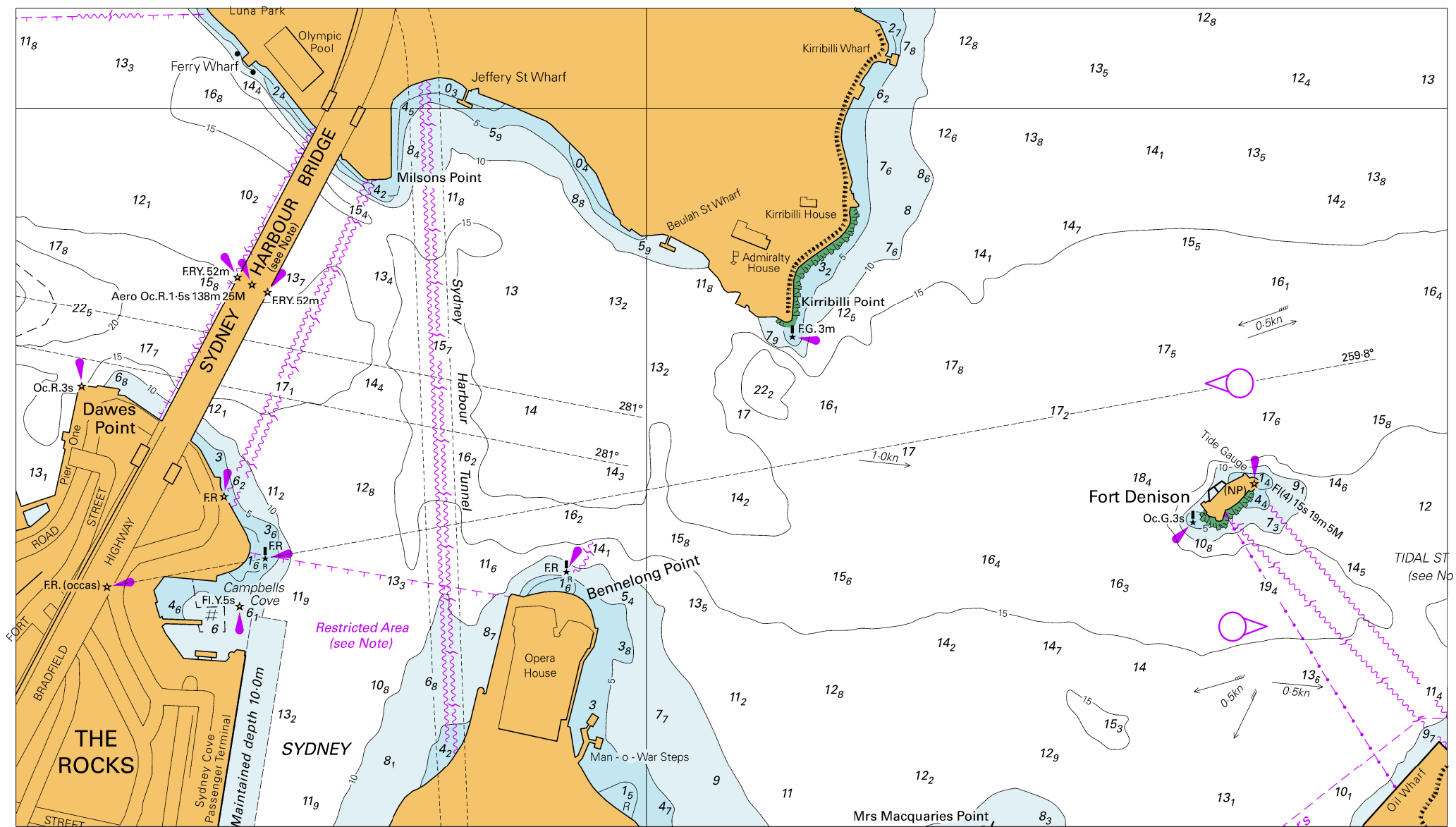
To accompany Australian Notice to Mariners 320/2018

HISTORIC WRECK

The site of an historic wreck is protected from unauthorised interference. For details see Seafarers Handbook for Australian Waters AHP 20.

Note for chart Aus 125

To accompany Australian Notice to Mariners 312/2018



Block for Chart Aus 202

© Commonwealth of Australia 2018

(268.5 x 153.5mm)

To accompany Australian Notice to Mariners 313/2018

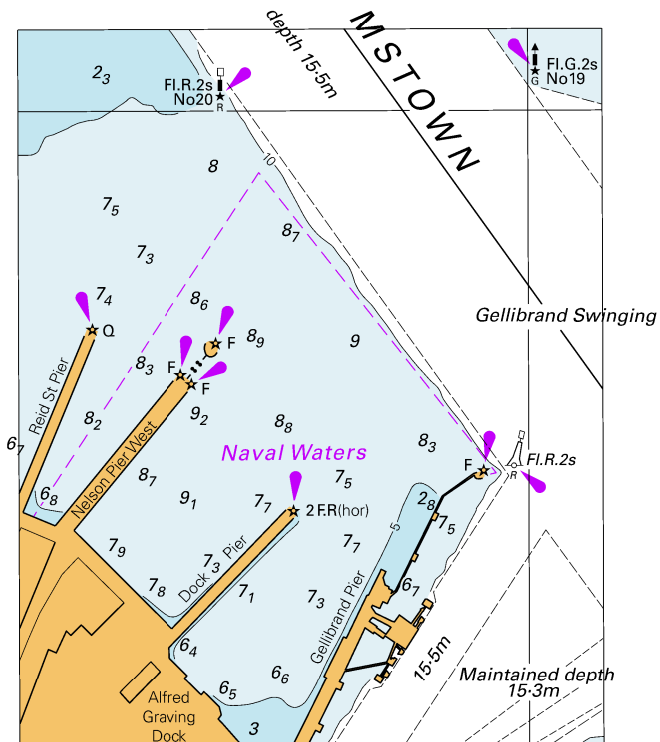


Block for Chart Aus 250

© Commonwealth of Australia 2018

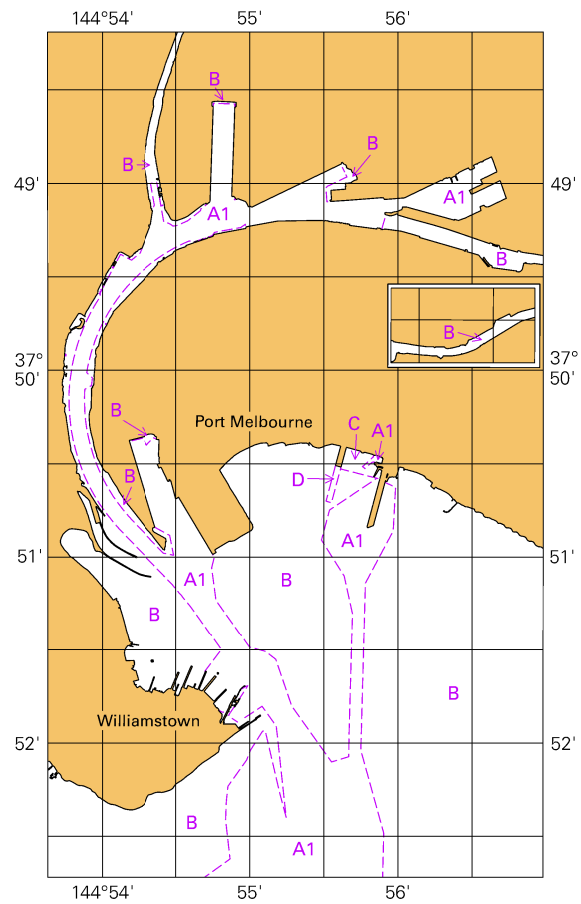
(114.1 x 101.1mm)

To accompany Australian Notice to Mariners 321/2018



© Commonwealth of Australia 2018
Block A for Chart Aus 154 (77.2 x 94.5mm)

To accompany Australian Notice to Mariners 321/2018
Zone of Confidence (ZOC) Diagram



© Commonwealth of Australia 2018
Block B for Chart Aus 154 (65-8 x 110-4mm)