

To accompany Australian Notice to Mariners 1112/2018

REEFREP MANDATORY SHIP REPORTING
SYSTEM (SRS)

The ship reporting system area encloses Torres Strait and the Great Barrier Reef. For details and categories of ships required to participate see Australian Seafarers Handbook AHP 20, Australia Pilot Volume III, NP 15 and Admiralty List of Radio Signals Volume 6(4).

When reporting within the REEFREP area, vessels are to call 'REEFVTS' on VHF channels 11 or 14 depending on the ship's position. INMARSAT-C should be used for communicating with REEFVTS when VHF communications are limited.

Note for chart Aus 268

To accompany Australian Notice to Mariners 1123/2018

HISTORIC WRECK

The site of an historic wreck is protected from unauthorised interference. For details see Seafarers Handbook for Australian Waters AHP 20.

Note for chart Aus 16

To accompany Australian Notice to Mariners 1116/2018

REEFREP MANDATORY SHIP REPORTING
SYSTEM (SRS)

The ship reporting system area encloses Torres Strait and the Great Barrier Reef. For details and categories of ships required to participate see Australian Seafarers Handbook AHP 20, Australia Pilot Volume III, NP 15 and Admiralty List of Radio Signals Volume 6(4).

When reporting within the REEFREP area, vessels are to call 'REEFVTS' on VHF channels 11 or 14 depending on the ship's position. INMARSAT-C should be used for communicating with REEFVTS when VHF communications are limited.

Note for chart Aus 246

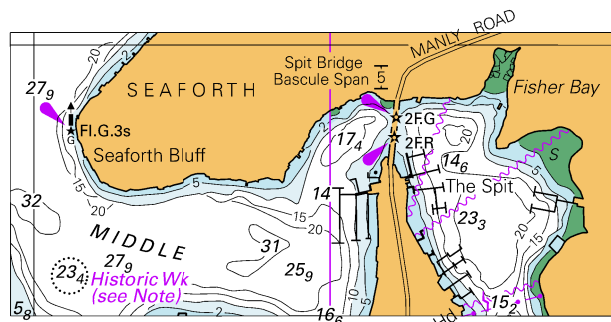
To accompany Australian Notice to Mariners 1132/2018

HISTORIC WRECK

The site of an historic wreck is protected from unauthorised interference. For details see Seafarers Handbook for Australian Waters AHP 20.

Note for chart Aus 920

To accompany Australian Notice to Mariners 1110/2018

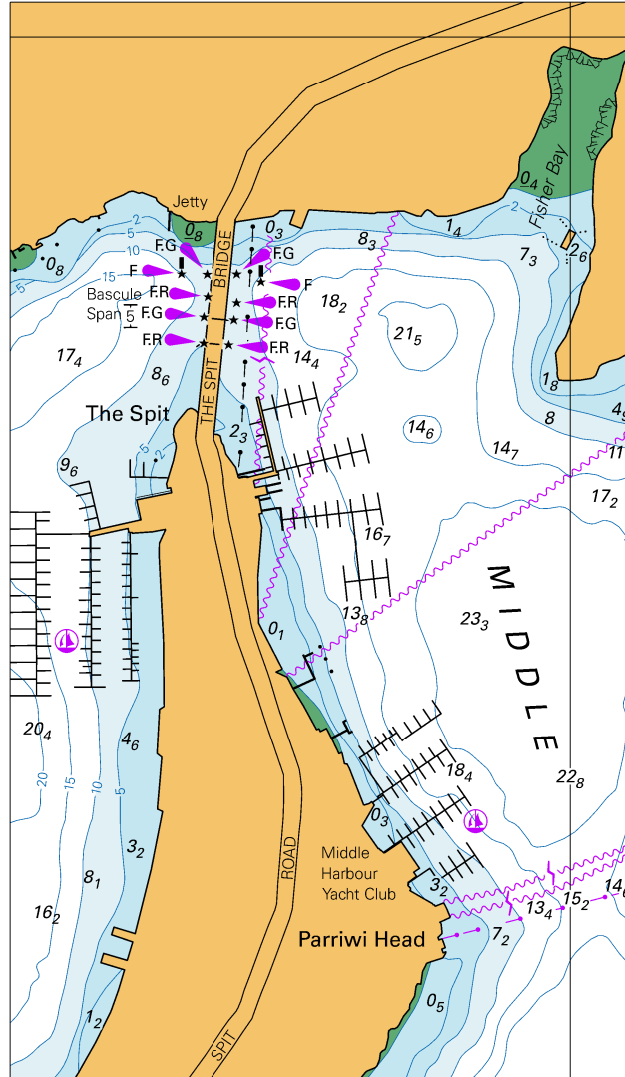


© Commonwealth of Australia 2018

Block for Chart Aus 200

(80.6 x 37.4mm)

To accompany Australian Notice to Mariners 1110/2018

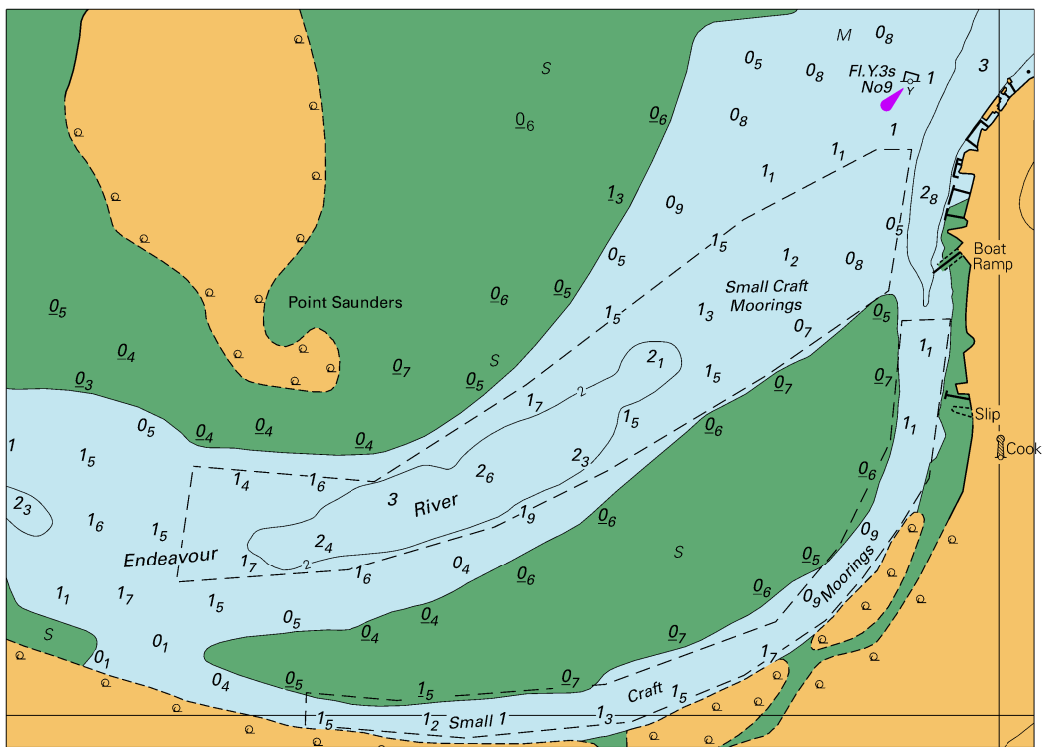


© Commonwealth of Australia 2018

Block for Chart Aus 201

(82.3 x 142.3mm)

To accompany Australian Notice to Mariners 1114/2018

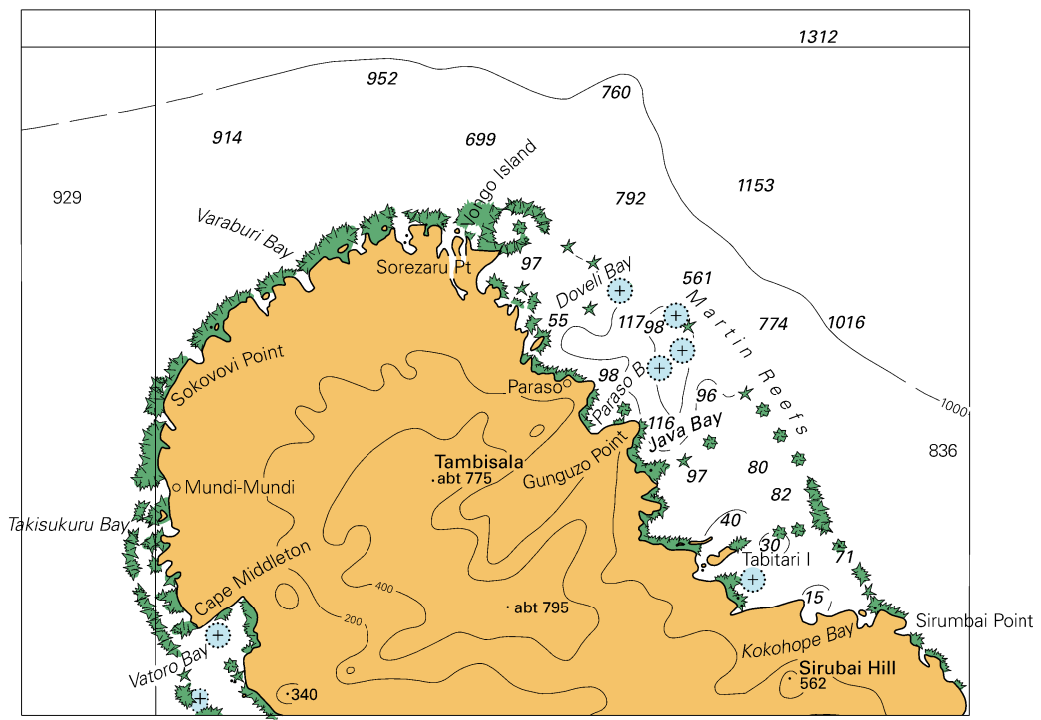


Block for Chart Aus 270

© Commonwealth of Australia 2018

(136.0 x 97.6mm)

To accompany Australian Notice to Mariners 1139/2018



Block for Chart SLB 301

© Commonwealth of Australia 2018

(125.2 x 93.3mm)